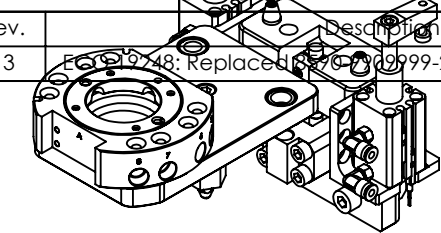
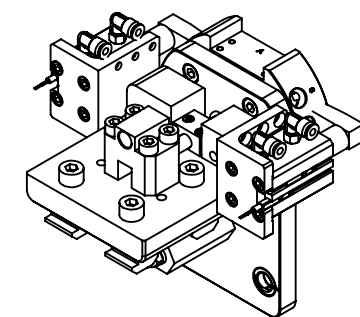


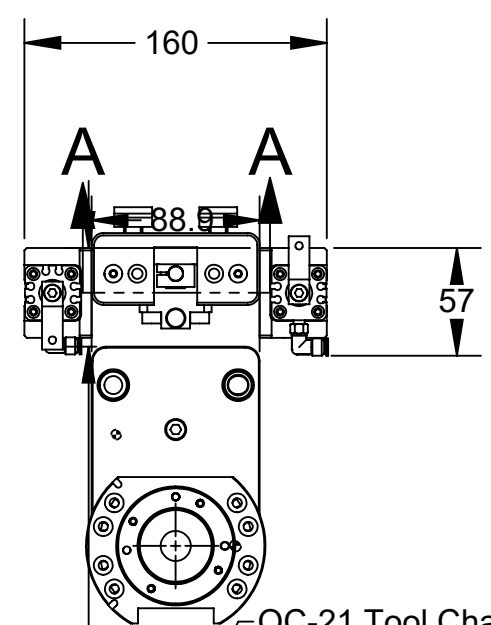
Rev.	Description	Initiator	Date
13	Fig 9120-48: Replaced 8590-990999-21 with 8590-990999-08.	TBC	1/26/2021



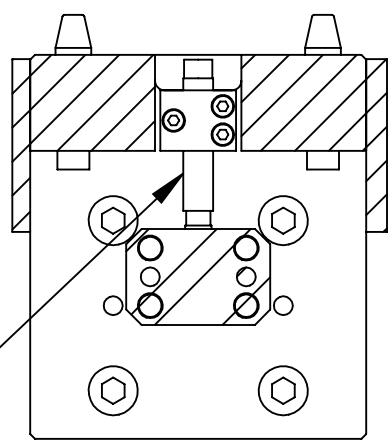
Clamps UnLocked



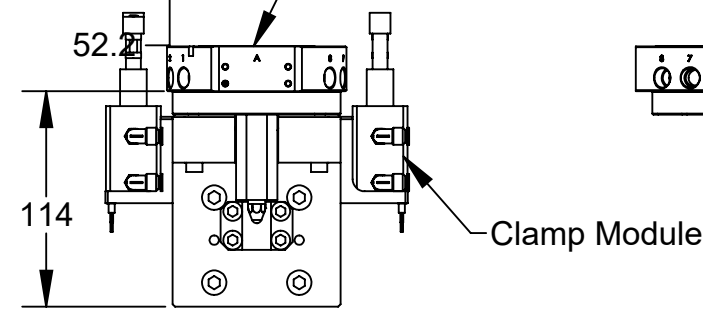
Clamps Locked



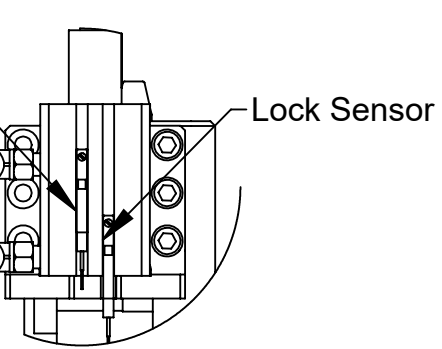
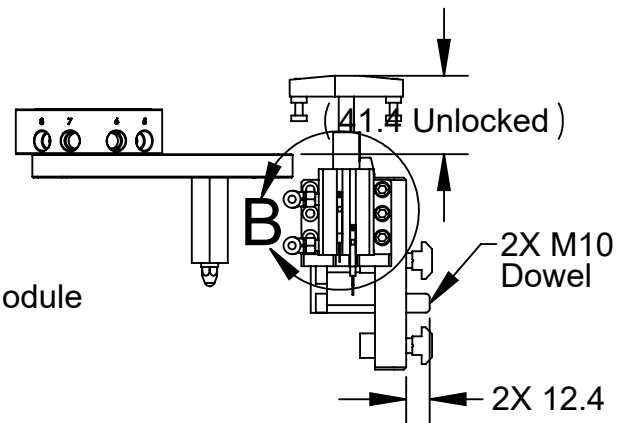
Sensor for Tool Presence



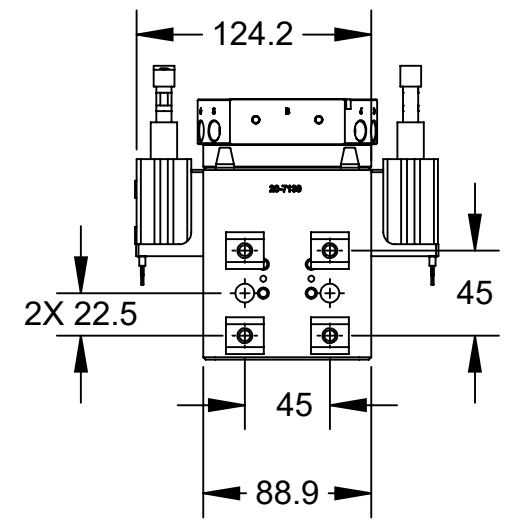
SECTION A-A
SCALE 1 : 2



Clamp Module



DETAIL B
SCALE 1 : 2



9120-TSS-HBQ-7392

9120-TSS-CM-7336
Note 1

8590-990999-08

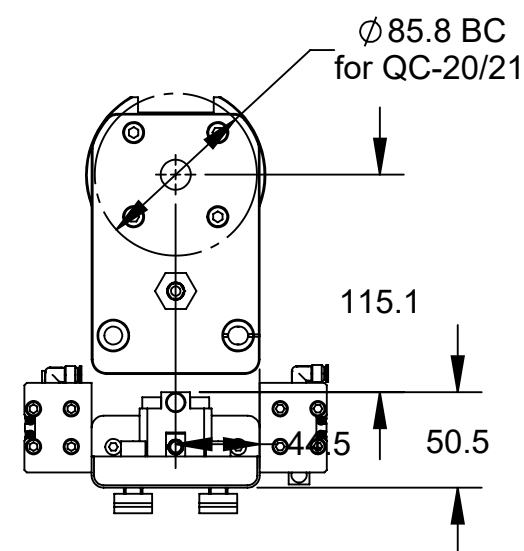
9120-TSS-MMB-7130
Note 1

9120-TSS-CM-7335
Note 1

9120-TSM-HM-3323
Note 1

2X 3690-0000000-60

9120-TSM-PM-3317
Note 1

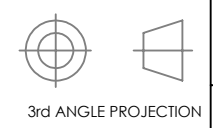


Ø 85.8 BC
for QC-20/21

Note
1. Tool Stand will be shipped unassembled and packaged to protect components.

NOTES: UNLESS OTHERWISE SPECIFIED.

DO NOT SCALE DRAWING.
ALL DIMENSIONS ARE IN MILLIMETERS.



1031 Goodworth Drive, Apex, NC 27539, USA
Tel: +1.919.772.0115 www.ati-ia.com
Fax: +1.919.772.8259 ISO 9001 Registered Company

PROPERTY OF ATI INDUSTRIAL AUTOMATION, INC. NOT TO BE REPRODUCED IN ANY MANNER EXCEPT ON ORDER OR WITH PRIOR WRITTEN AUTHORIZATION OF ATI.

DRAWN BY: D.Brewer, 1/24/12		TITLE	
CHECKED BY: MLG, 1/24/12		TSS Tool Stand for QC-20/21 with MM, TP and (2X) CM	
PROJECT # 110516-1	SHEET 1 OF 1	SCALE 1:20	SIZE B
		DRAWING NUMBER 9230-20-3613	REVISION 13