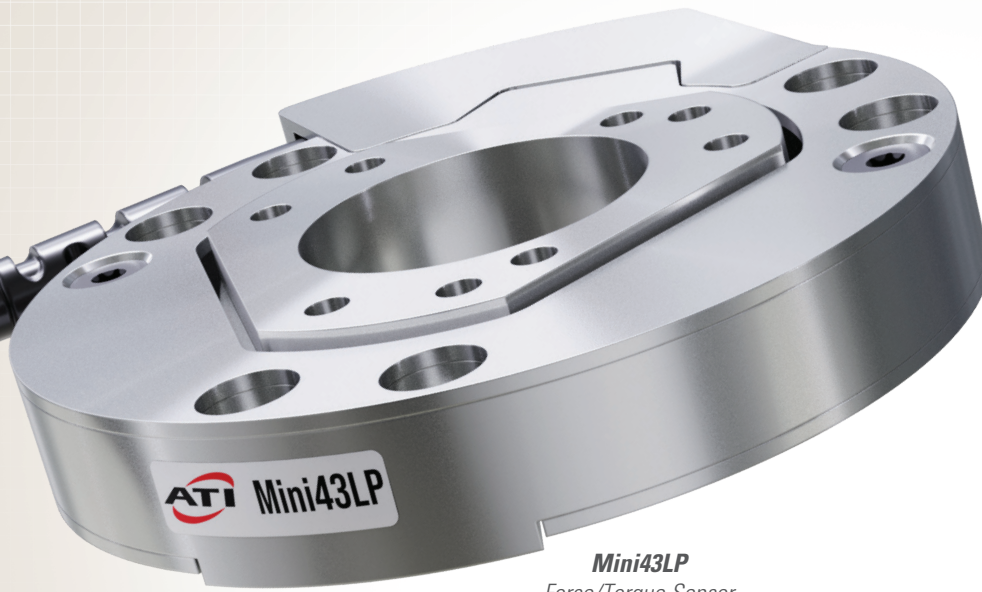


Mini43LP

Ultra-Thin Force/Torque Sensor



Mini43LP
Force/Torque Sensor

Product Description

The ultra-thin Mini43LP Force/Torque sensor offers reliable force sensing in a rugged yet compact transducer. The Mini43LP is ideal for research and testing applications, laboratory automation, robotic surgery, as well as miniature robotic systems. This F/T sensor enhances the accuracy and repeatability of precise operations such as assembly tasks of electronics, optics, and other micro force sensing applications.

The Mini43LP combines the superior accuracy and high overload protection of ATI's renowned Force/Torque Sensor products in an ultra-thin package. The design features a bolt-down mounting pattern, an angled cable exit to minimize interference with adjacent equipment, and a large through-hole for simplified cable and other utility management. The Mini43LP is compatible with all of ATI's existing communication interfaces and integrates easily with miniature robot models from Mecademic, Yaskawa and others.

Product Features

Precise and repeatable measurements in demanding applications.

Bolt-through pattern reduces stack-height and simplifies interface design.

Ultra-thin design for smaller automated applications.

Angled cable exit to minimize interference.

Large through-hole for simplified utility management.

High accuracy and resolution across all axes.

Specifications	Values
Rated Fxy*	1200 N (280 lbf)
Rated Txy*	15 Nm (130 lbf-in)
Weight	0.0499 kg (0.11 lb)
Diameter	43 mm (1.69 in)
Height	7.9 mm (0.311 in)

ATI reserves the right to change these specifications.

*Ranges above are the maximum along the axis, other calibrated ranges available.

For detailed specifications on our entire line of Force/Torque Sensors, visit our website at www.ati-ia.com.

Mini43LP F/T Sensor



Mini43LP F/T Sensor

Drawing # 9630-05-0005-01

