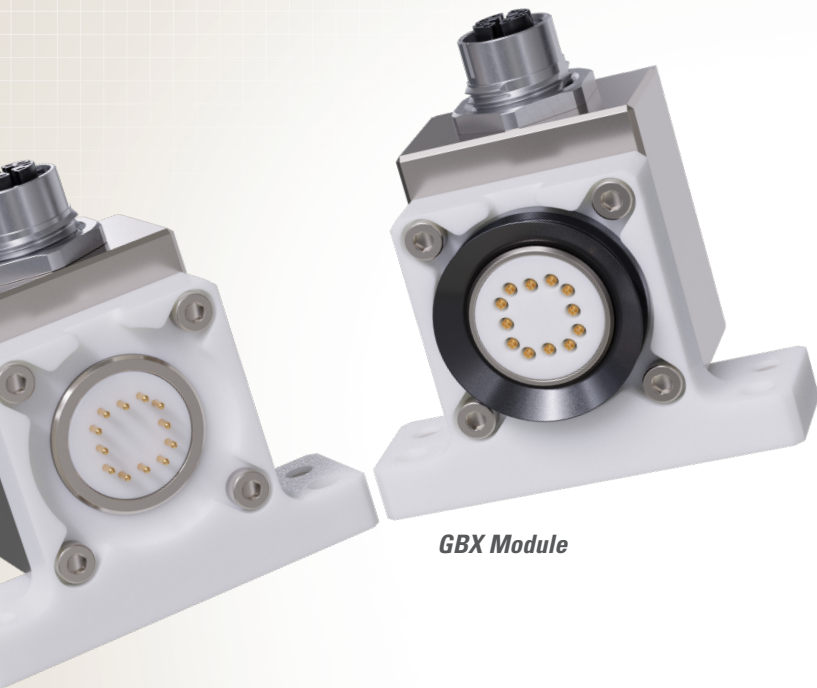




GBX Module for 10 Gigabit Ethernet For Robotic Tool Changers



GBX Module

Product Description

Smart manufacturing processes thrive with flexibility and timely, accurate communication. ATI's GBX 10 Gigabit Ethernet Modules excel in high-speed data and signal communication with vision, inspection, metrology, motion control, and fieldbus systems utilized in a variety of industries and applications:

Product Features & Benefits

GBX 10 Gigabit Ethernet Modules provide safe and reliable **transmission of high-speed data, signals, and fieldbus communication** for advanced automation, AI, and Industry 4.0.

Plug-and-play M12 8-pin X-code connectors for safe and reliable **pass-through of Cat6/Cat6a industrial Ethernet cables** **saves time during integration** – no stripping, crimping, or soldering.

Configurable cable exit between -90° , 0° , and $+90^\circ$ radial positions allows users to **optimize cable dress and routing** to reduce cable strain and maximize system uptime.

Up to **One Million mating cycles** to excel in **advanced industries** such as automotive, aerospace, testing, and more.

Broad compatibility with ATI Standard Tool Changers, Heavy Duty Tool Changers, and Utility Couplers **for module standardization**.

For more information, visit www.ati-ia.com/GBX.

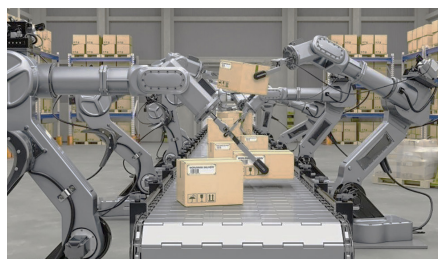
Manufacturing

Automotive > Paint Inspection, Gap Meas.
Test Systems > Automatic & Manual Docking



Warehouse & Logistics

Logistics > Barcode Scanning



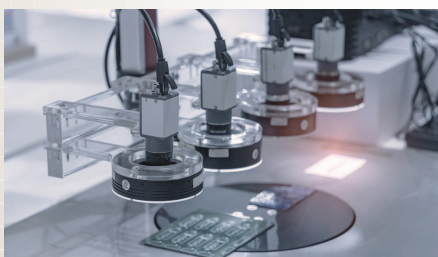
Metrology

Laser Scanner > Scan to CAD
Robotic Material Removal > Scan to Path



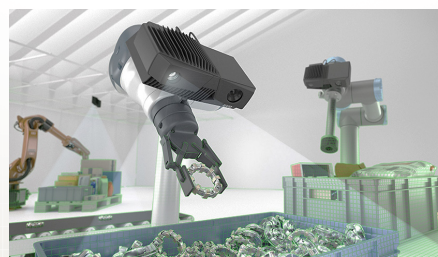
Digital Image Processing

GigE Vision for Machine Vision



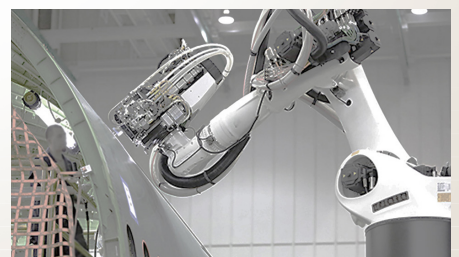
Material Handling, Pick-and-Place

Bin Picking > Part Position Scanning

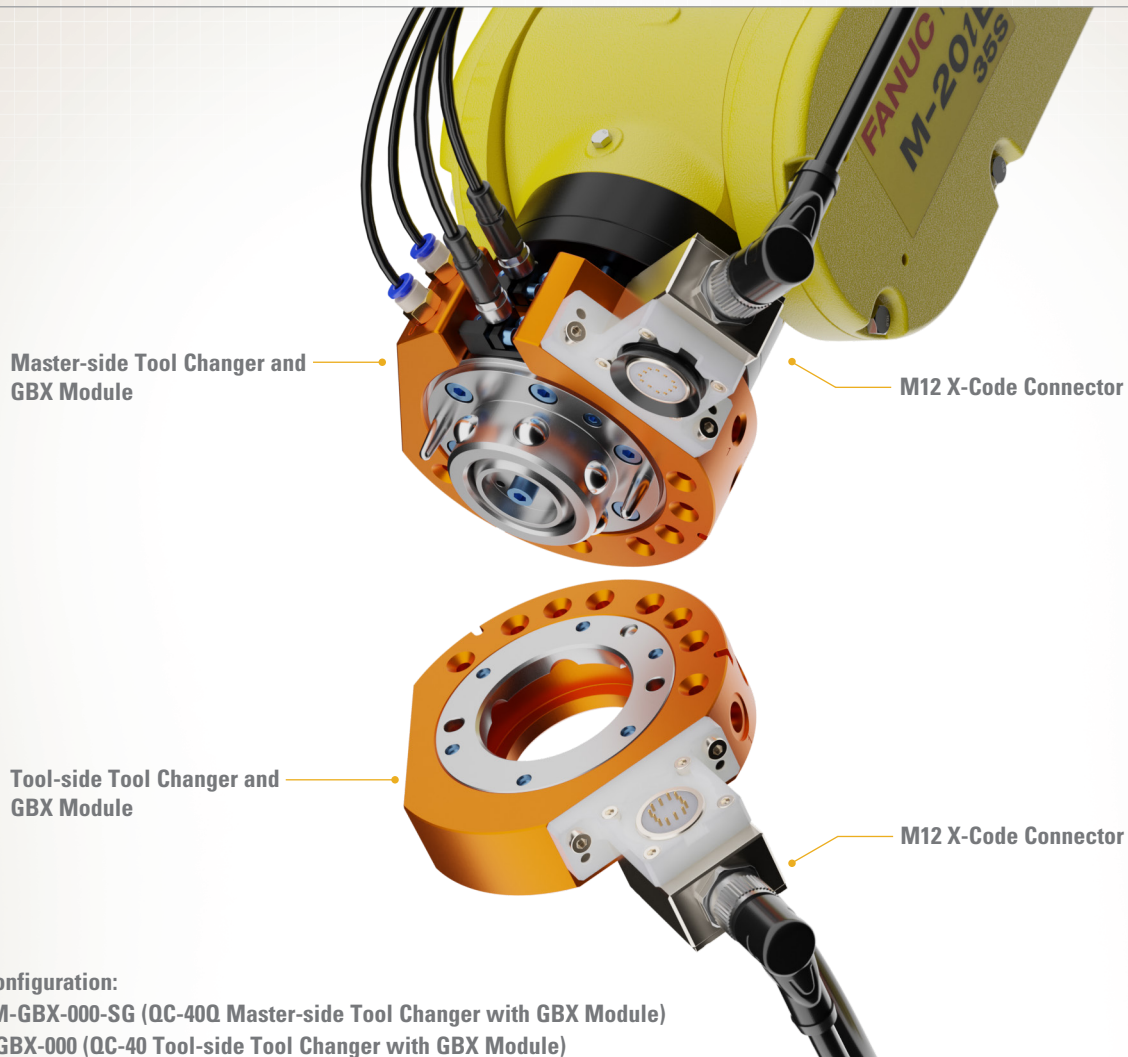


Aerospace

Maintenance > Rivet Inspection
Quality Control > Surface Scanning



GBX Module for 10 Gigabit Ethernet Transmission



Example configuration:
 9120-040QM-GBX-000-SG (QC-40Q Master-side Tool Changer with GBX Module)
 9120-040T-GBX-000 (QC-40 Tool-side Tool Changer with GBX Module)

Specifications	Values
Signal	Up to 10 Gbps / CAT6A Ethernet
Connectors	M12 X-Code 8-pin, per IEC61076-2-109:2014
Cable Exit Orientation	Center (0°), configure optionally to Left (90°), or Right (-90°) in the field
# Pins	8
Electrical Rating	60V / 0.6A, supports Power Over Ethernet (PoE) Class III
Weight	Master-side 0.113 kg (0.25 lbs), Tool-side 0.109 kg (0.24 lbs)
Protection Rating	IP65 when coupled
Ordering Part Numbers	9120-GBX-M (Master-side), 9120-GBX-T (Tool-side)

ATI reserves the right to change these specifications.