



**Manual Addendum for the  
9105-IF-OEMx DAQ Transducer Systems**

**Document #: 9610-05-1020**

***Engineered Products for Robotic Productivity***

Pinnacle Park • 1031 Goodworth Drive • Apex, NC 27539 • Tel:+1 919.772.0115 • Fax:+1 919.772.8259 • [www.ati-ia.com](http://www.ati-ia.com)

## Foreword

Information contained in this document is the property of ATI Industrial Automation, Inc. and shall not be reproduced in whole or in part without prior written approval of ATI Industrial Automation, Inc. The information herein is subject to change without notice and should not be construed as a commitment on the part of ATI Industrial Automation, Inc. This manual is periodically revised to reflect and incorporate changes made to the F/T system.

ATI Industrial Automation, Inc. assumes no responsibility for any errors or omissions in this document.

Copyright © (2021) by ATI Industrial Automation, Inc., Apex, North Carolina USA. All Rights Reserved.  
Published in the USA.

In consideration that ATI Industrial Automation, Inc. (ATI) products are intended for use with robotic and/or automated machines, ATI does not recommend the use of its products for applications wherein failure or malfunction of a ATI component or system threatens life or makes injury probable. Anyone who uses or incorporates ATI components within any potentially life threatening system must obtain ATI's prior consent based upon assurance to ATI that a malfunction of ATI's component does not pose direct or indirect threat of injury or death, and (even if such consent is given) shall indemnify ATI from any claim, loss, liability, and related expenses arising from any injury or death resulting from use of ATI components.

ATI OEM F/T Interface Boards are intended to be designed and installed into an EMC-safe enclosure before use. For recommendations on how to design EMC safe enclosures, please consult the Institute of Electrical and Electronics Engineers (IEEE) at [www.ieee.org](http://www.ieee.org).

*All trademarks belong to their respective owners. Windows® and Excel® are registered trademarks of Microsoft Corporation.*

### Note

Please read the manual before calling customer service, and have the following information available:

1. Serial number (e.g., FT01234)
2. Transducer model (e.g., Axia, etc.)
3. Calibration (e.g., US-15-50, SI-65-6, etc.)
4. Accurate and complete description of the concern or question
5. Computer and software information, for example: operating system, PC type, drivers, and application software

Be near the F/T system when calling (if possible).

Please contact an ATI representative for assistance, if needed:

Sale, Service and Information about ATI products:

**ATI Industrial Automation**

1031 Goodworth Drive

Apex, NC 27539 USA

[www.ati-ia.com](http://www.ati-ia.com)

Tel: +1.919.772.0115

Fax: +1.919.772.8259

**Application Engineering**

Tel: +1.919.772.0115, Extension 511

Fax: +1.919.772.8259

E-mail: [ft\\_support@ati-ia.com](mailto:ft_support@ati-ia.com)

## Table of Contents

<b>Foreword</b> .....	<b>2</b>
<b>1. Safety</b> .....	<b>4</b>
1.1 Explanation of Notifications .....	4
1.2 General Safety Guidelines .....	4
<b>2. Overview</b> .....	<b>5</b>
2.1 Installing an IF-OEM Board to a TW Transducer .....	5
2.2 P7A Connector for Power Input: Pinout and Electrical Specifications .....	5
2.3 P7B Connector for Signal Output .....	6
2.4 DB26 (9105-IF-OEM2) Connector Pinout .....	7
<b>3. Converting Gages to F/T Measurements</b> .....	<b>8</b>
<b>4. Drawing</b> .....	<b>9</b>
<b>5. Terms and Conditions of Sale</b> .....	<b>10</b>

## 1. Safety

The safety section describes general safety guidelines to be followed with this product, explanations of the notifications found in this manual, and safety precautions that apply to the product. Product specific notifications are imbedded within the sections of this manual (where they apply).

### 1.1 Explanation of Notifications

These notifications are used in all of ATI manuals and are not specific to this product. The user should heed all notifications from the robot manufacturer and/or the manufacturers of other components used in the installation.



**DANGER:** Notification of information or instructions that if not followed will result in death or serious injury. The notification provides information about the nature of the hazardous situation, the consequences of not avoiding the hazard, and the method for avoiding the situation.



**WARNING:** Notification of information or instructions that if not followed could result in death or serious injury. The notification provides information about the nature of the hazardous situation, the consequences of not avoiding the hazard, and the method for avoiding the situation.



**CAUTION:** Notification of information or instructions that if not followed could result in moderate injury or will cause damage to equipment. The notification provides information about the nature of the hazardous situation, the consequences of not avoiding the hazard, and the method for avoiding the situation.

**NOTICE:** Notification of specific information or instructions about maintaining, operating, installing, or setting up the product that if not followed could result in damage to equipment. The notification can emphasize, but is not limited to: specific grease types, best operating practices, and maintenance tips.

### 1.2 General Safety Guidelines

The customer should verify that the sensor is rated for maximum loads and torques expected during operation. Because static forces are less than the dynamic forces from the acceleration or deceleration of the robot, be aware of the dynamic loads caused by the robot.

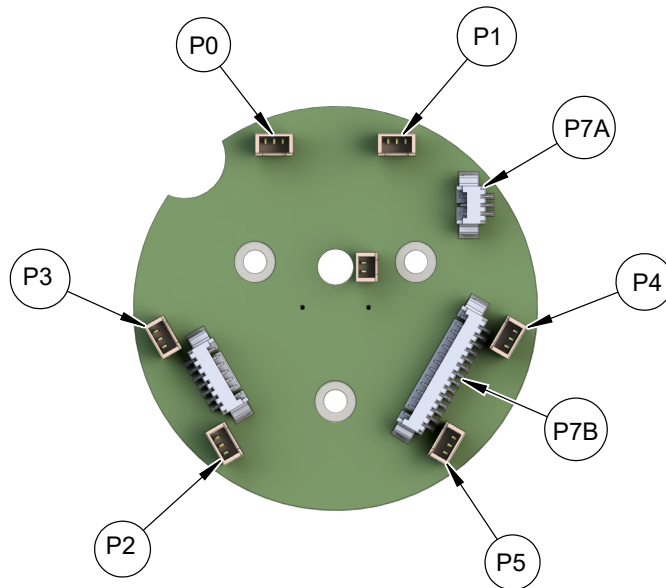
## 2. Overview

The IF-OEMx boards are external interface boards that are used with TW transducers. TW transducers do not have integrated electronics for conditioning the transducer signal. The IF-OEMx transducer systems receive direct power via a cable (ATI P/N 9105-C-MX-U-XX) connected to the P7A connector on the IF-OEMx board. The six gage outputs are amplified on the IF-OEMx board. On this board, the P7B connector passes these outputs to the DAQ device through the cable (ATI P/N 9105-C-MX-U-XX). Then these gage outputs are processed through the UserAccess calibration matrix and become usable F/T measurements (refer to [Section 3—Converting Gages to F/T Measurements](#)). For more information about standard DAQ transducer systems and the operational characteristics of IF-OEMx transducer systems, refer to the [9620-05-DAQ](#) manual.

### 2.1 Installing an IF-OEM Board to a TW Transducer

The -MX connector configuration on the sensor cable has six 3-pin Molex connectors. Each cable connector is labeled P0 through P5 and corresponds to the six gage outputs from the sensor to the board. The IF-OEMx board has six 3-pin Molex connectors that are labeled P0 through P5. Attach each cable connector to the corresponding connector on the board. The following figure shows the connectors on a IF-OEMx board.

Figure 2.1—IF-OEMx Board



Pinout and specification information for the P7A and P7B connectors on 9105-IF-OEMx boards and for the DB26 connector on the 9105-IF-OEM2 board are in the following sections.

### 2.2 P7A Connector for Power Input: Pinout and Electrical Specifications

To power the IF-OEMx board, supply  $\pm 15$  V to P7A connector.

Table 2.1—P7A Power Input Pinout		
Pin Number	Color	Signal
1	Red	+ 15 VDC
2	Black	Ground
3	Orange	- 15 VDC

Electrical specification for the +/-15VDC P7A connector are in the following table:

Table 2.2—IF-OEM ± 15 V Electrical Specifications				
Signal	Minimum	Typical	Maximum	Units
+ V <sub>ANA</sub> Power Input Voltage	13.0	15.0	17.0	V DC
- V <sub>ANA</sub> Power Input Voltage	-17.0	-15.0	-13.0	V DC
+V <sub>ANA</sub> Power Input Current	N/A		50.0	mA
-V <sub>ANA</sub> Power Input Current			-45.0	mA
V <sub>ANA</sub> Power Input Noise			75.0	mV p-p
V <sub>ANA</sub> Power Input Regulation			0.5%	N/A

**NOTICE:** Custom cables that mate to the P7A and P7B headers use Molex microminature 1.25 mm receptacles.

### 2.3 P7B Connector for Signal Output

P7B is the output for the six amplified signals that connect to the DAQ device. The signal output is in the following table:

**NOTICE:** The T REF and T OUT signal is used only on custom sensors with a thermistor installed. Standard sensors do not have a thermistor; do not connect these signals to the DAQ device.

Table 2.3—P7B Signal Output			
Pin Number	Color	Signal Name	Note
1	Brown/White	G0 REF	}Twisted Pair
2	Brown	G0 OUT	
3	Yellow/White	G1 REF	}Twisted Pair
4	Yellow	G1 OUT	
5	Green/White	G2 REF	}Twisted Pair
6	Green	G2 OUT	
7	Blue/White	G3 REF	}Twisted Pair
8	Blue	G3 OUT	
9	Violet/White	G4 REF	}Twisted Pair
10	Violet	G4 OUT	
11	Grey/White	G5 REF	}Twisted Pair
12	Grey	G5 OUT	
13	White/Black	T REF	}Twisted Pair
14	White	T OUT	

## 2.4 DB26 (9105-IF-OEM2) Connector Pinout

The DB26 connector pinout for the 9105-IF-OEM2 is in the following table:

Table 2.4—DB26 Connector Pinout	
Pin Number	Signal Name
1	Ch7 OUT
2	+5 V
3	T OUT
4	Gage5 OUT
5	Gage4 OUT
6	Gage3 OUT
7	Gage2 OUT
8	Gage1 OUT
9	Gage0 OUT
11	DGND (ground)
12	THERMISTOR REF
13	Gage5 OUT
14	Gage4 OUT
15	Gage3 OUT
16	Gage2 OUT
17	Gage1 OUT
18	Gage0 OUT
19	DIO0
21	+15 VDC Input
22	AGND Input
23	-15 VDC Input

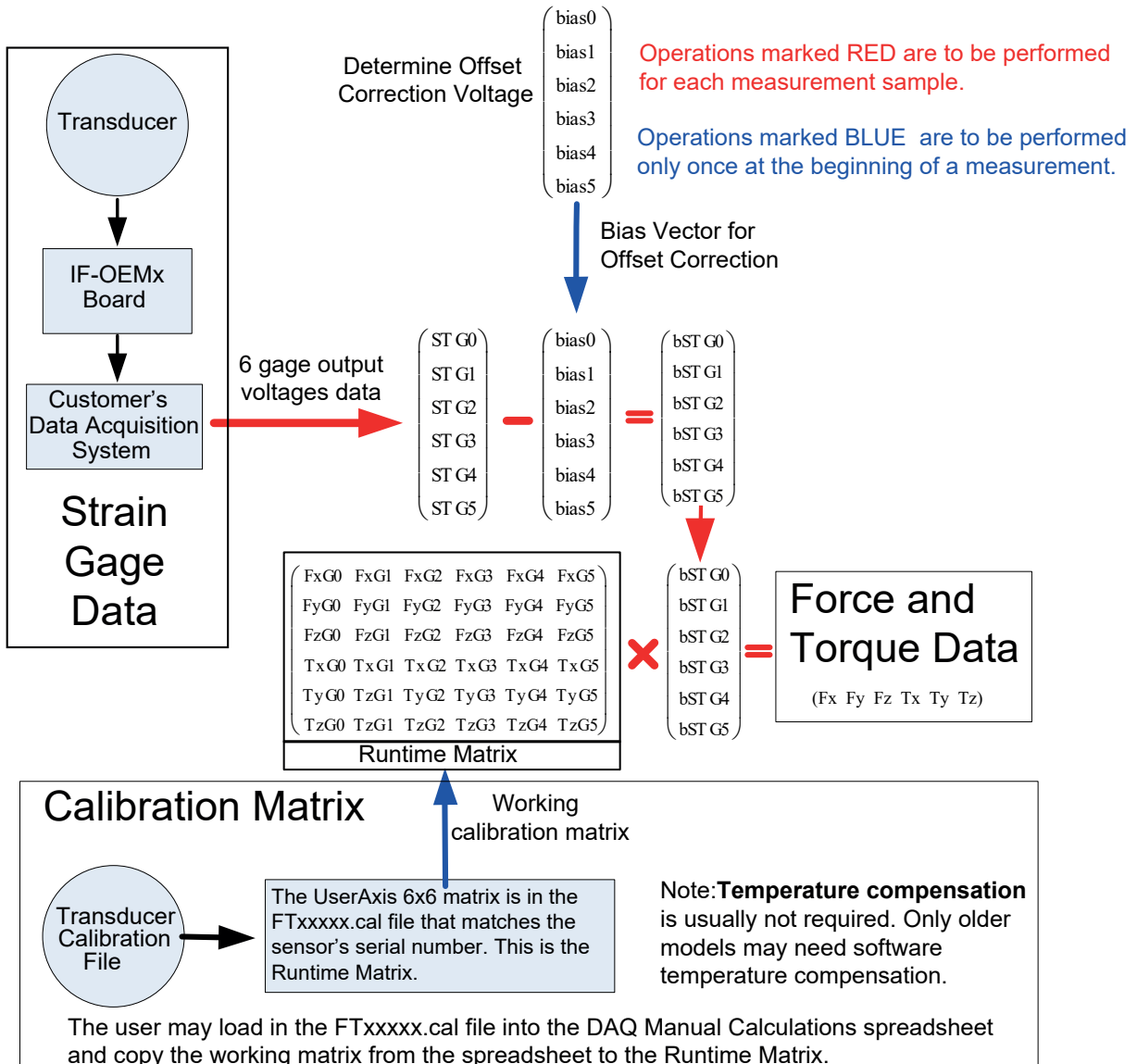


### 3. Converting Gages to F/T Measurements

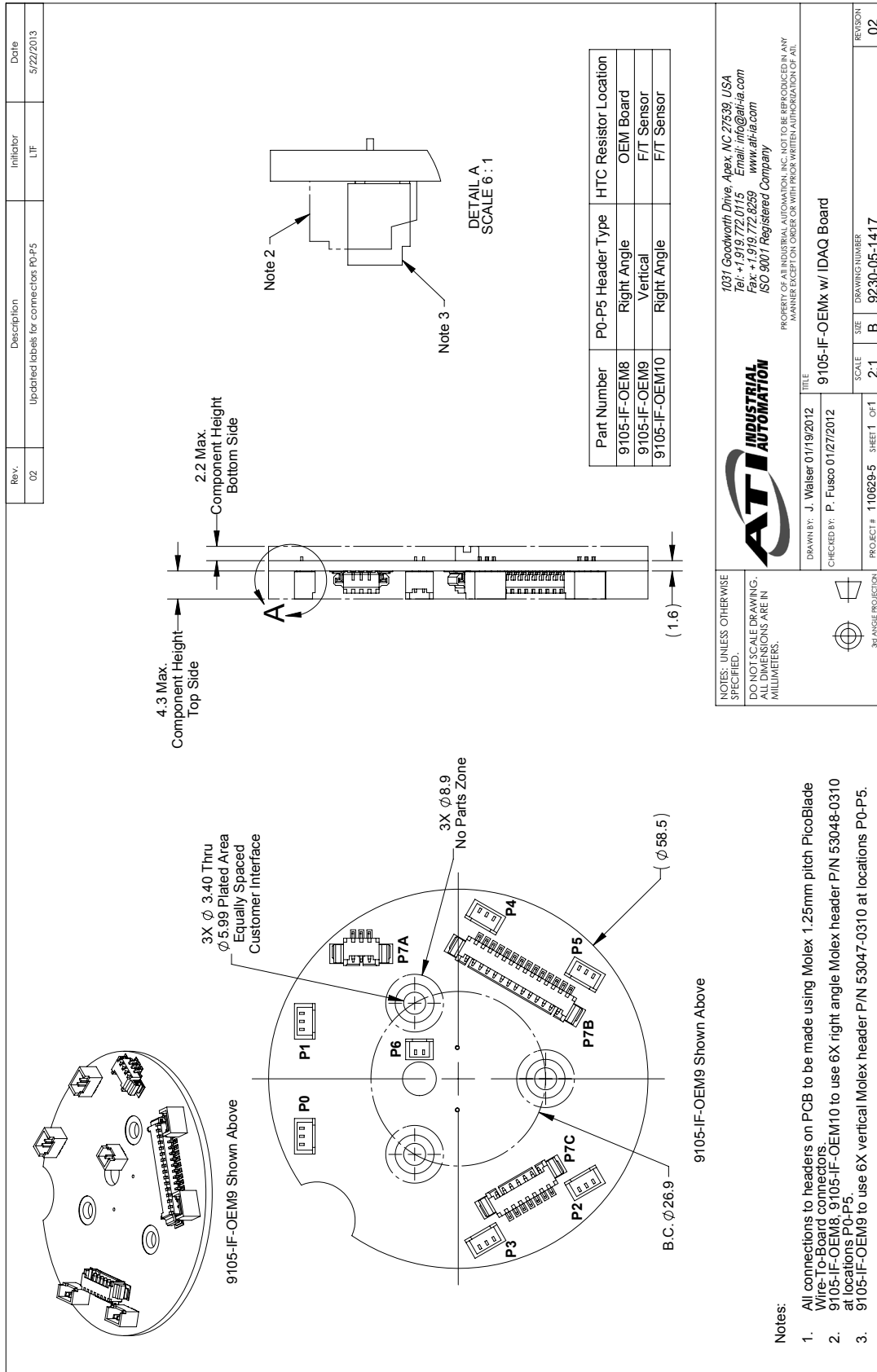
After the IF-OEMx DAQ Transducer system is connected and powered, a UserAxis calibration matrix converts the six amplified gage voltages (G0 through G5 to the DAQ device) into Force and Torque measurements. The UserAxis 6x6 matrix can be found in the FTxxxxx.cal file, which can be downloaded from the ATI website: <https://www2.ati-ia.com/Library/Software/FTDigitaldownload/getcalfiles.aspx>. The Runtime Matrix is shown in the following figure.

**NOTICE:** If the DAQ device is a National Instruments® product, use the ATI DAQ Demo program to complete the following conversion.

**Figure 3.1—Runtime Matrix**



## 4. Drawing



## 5. Terms and Conditions of Sale

The following Terms and Conditions are a supplement to and include a portion of ATI's Standard Terms and Conditions, which are on file at ATI and available upon request.

ATI warrants to Purchaser that force torque sensor products purchased hereunder will be free from defects in material and workmanship under normal use for a period of one (1) year from the date of shipment. The warranty period for repairs made under a RMA shall be for the duration of the original warranty, or ninety (90) days from the date of repaired product shipment, whichever is longer. ATI will have no liability under this warranty unless: (a) ATI is given written notice of the claimed defect and a description thereof with thirty (30) days after Purchaser discovers the defect and in any event, not later than the last day of the warranty period and (b) the defective item is received by ATI not later than (10) days after the last day of the warranty period. ATI's entire liability and Purchaser's sole remedy under this warranty is limited to repair or replacement, at ATI's election, of the defective part or item or, at ATI's election, refund of the price paid for the item. The foregoing warranty does not apply to any defect or failure resulting from improper installation, operation, maintenance, or repair by anyone other than ATI.

ATI will in no event be liable for incidental, consequential, or special damages of any kind, even if ATI has been advised of the possibility of such damages. ATI's aggregate liability will in no event exceed the amount paid by the purchaser for the item which is the subject of claim or dispute. ATI will have no liability of any kind for failure of any equipment or other items not supplied by ATI.

No action against ATI, regardless of form, arising out of or in any way connected with products or services supplied hereunder, may be brought more than one year after the cause of action accrued.

No representation or agreement varying or extending the warranty and limitation of remedy provisions contained herein is authorized by ATI, and may not be relied upon as having been authorized by ATI, unless in writing and signed by an executive officer of ATI.

Unless otherwise agreed in writing by ATI, all designs, drawings, data, inventions, software, and other technology made or developed by ATI in the course of providing products and services hereunder, and all rights therein under any patent, copyright, or other law protecting intellectual property, shall be and remain ATI's property. The sale of products or services hereunder does not convey any expressed or implied license under any patent, copyright, or other intellectual property right owned or controlled by ATI, whether relating to the products sold or any other matter, except for the license expressly granted below.

In the course of supplying products and services hereunder, ATI may provide or disclose to Purchaser confidential and proprietary information of ATI relating to the design, operation, or other aspects of ATI's products. As between ATI and Purchaser, ownership of such information, including without limitation any computer software provided to Purchaser by ATI, shall remain in ATI and such information is licensed to Purchaser only for Purchaser's use in operating the products supplied by ATI hereunder in Purchaser's internal business operations.

Without ATI's prior written permission, Purchaser will not use such information for any other purpose or provide or otherwise make such information available to any third party. Purchaser agrees to take all reasonable precautions to prevent any unauthorized use or disclosure of such information.

Purchaser will not be liable hereunder with respect to disclosure or use of information which: (a) is in the public domain when received from ATI, (b) is thereafter published or otherwise enters the public domain through no fault of Purchaser, (c) is in Purchaser's possession prior to receipt from ATI, (d) is lawfully obtained by Purchaser from a third party entitled to disclose it, or (f) is required to be disclosed by judicial order or other governmental authority, provided that, with respect to such to maintain the confidentiality of such information.