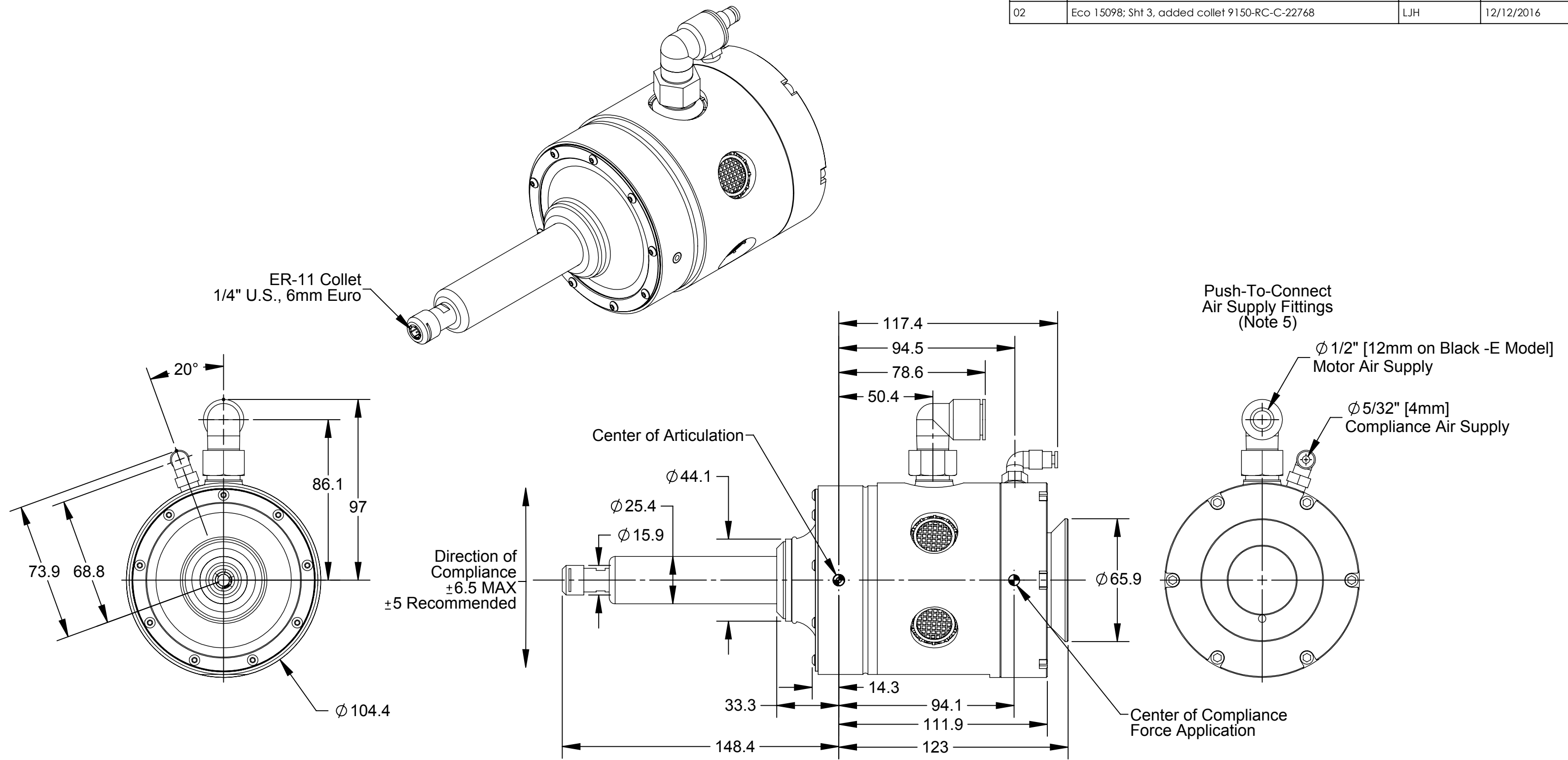


Rev.	Description	Initiator	Date
02	Eco 15098; Sht 3, added collet 9150-RC-C-22768	LJH	12/12/2016



Notes:

1. Motor/Spindle air supply to be regulated to 6.2 Bar [90 PSI]
2. Air supply to be dry, NON-LUBRICATED, and filtered 5 Micron or better. (The use of a coalescing filter is recommended).
3. Air consumption 5.43 l/s [11.5 CFM] at idle, 18 l/s [38 CFM] at stall.
4. DO NOT restrict air flow or pressure to alter motor speed.
5. The installed air supply fittings may be removed to utilize customer supplied 3/8NPT and 1/8NPT air fittings.
6. Do not exceed the maximum thread length for mounting fasteners where specified.

NOTES: UNLESS OTHERWISE SPECIFIED.

DO NOT SCALE DRAWING. ALL DIMENSIONS ARE IN MILLIMETERS.



3rd ANGLE PROJECTION



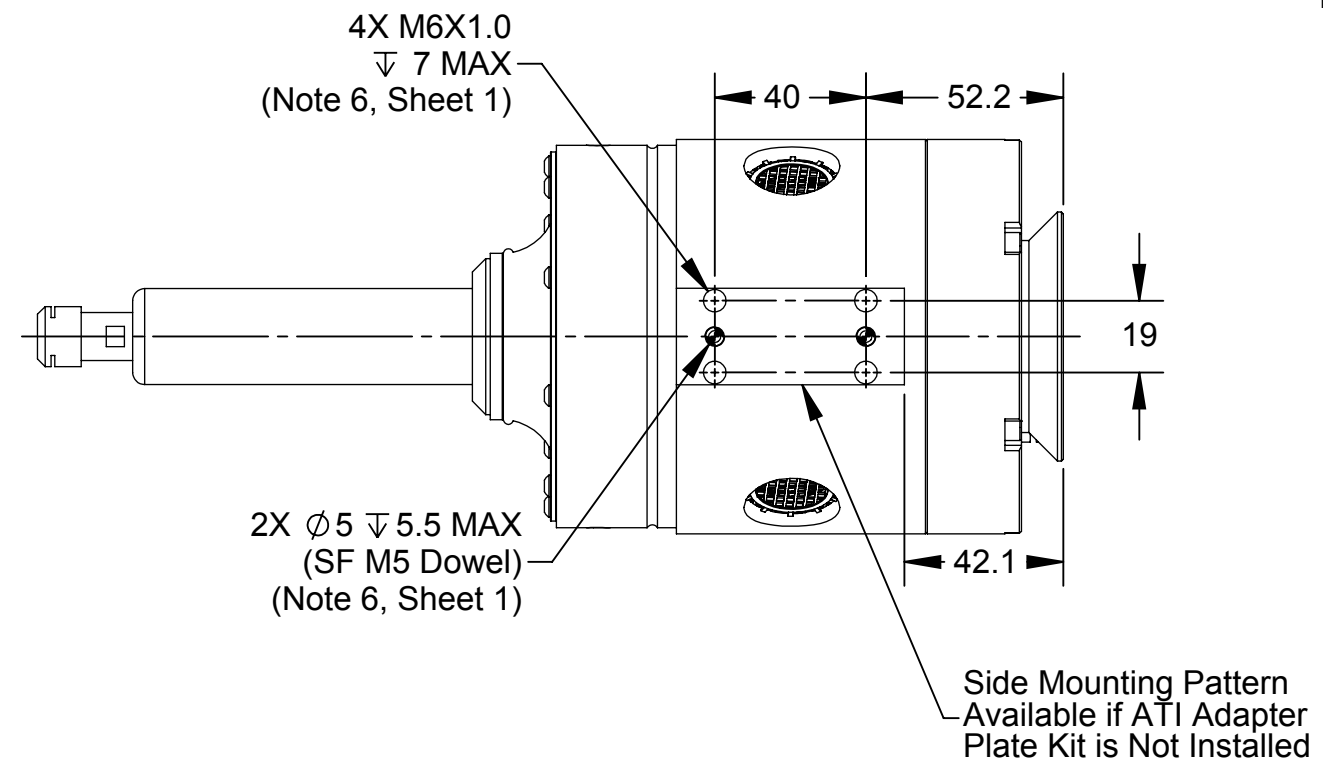
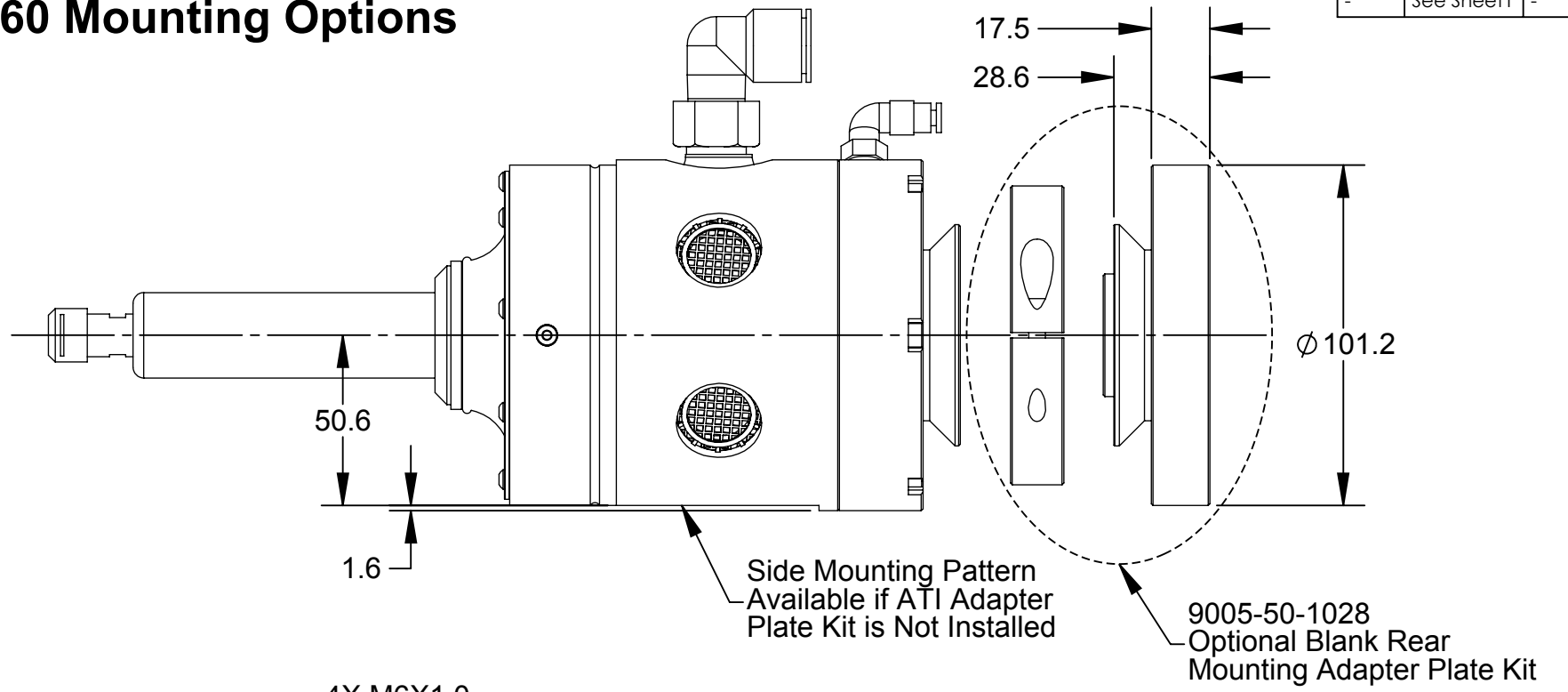
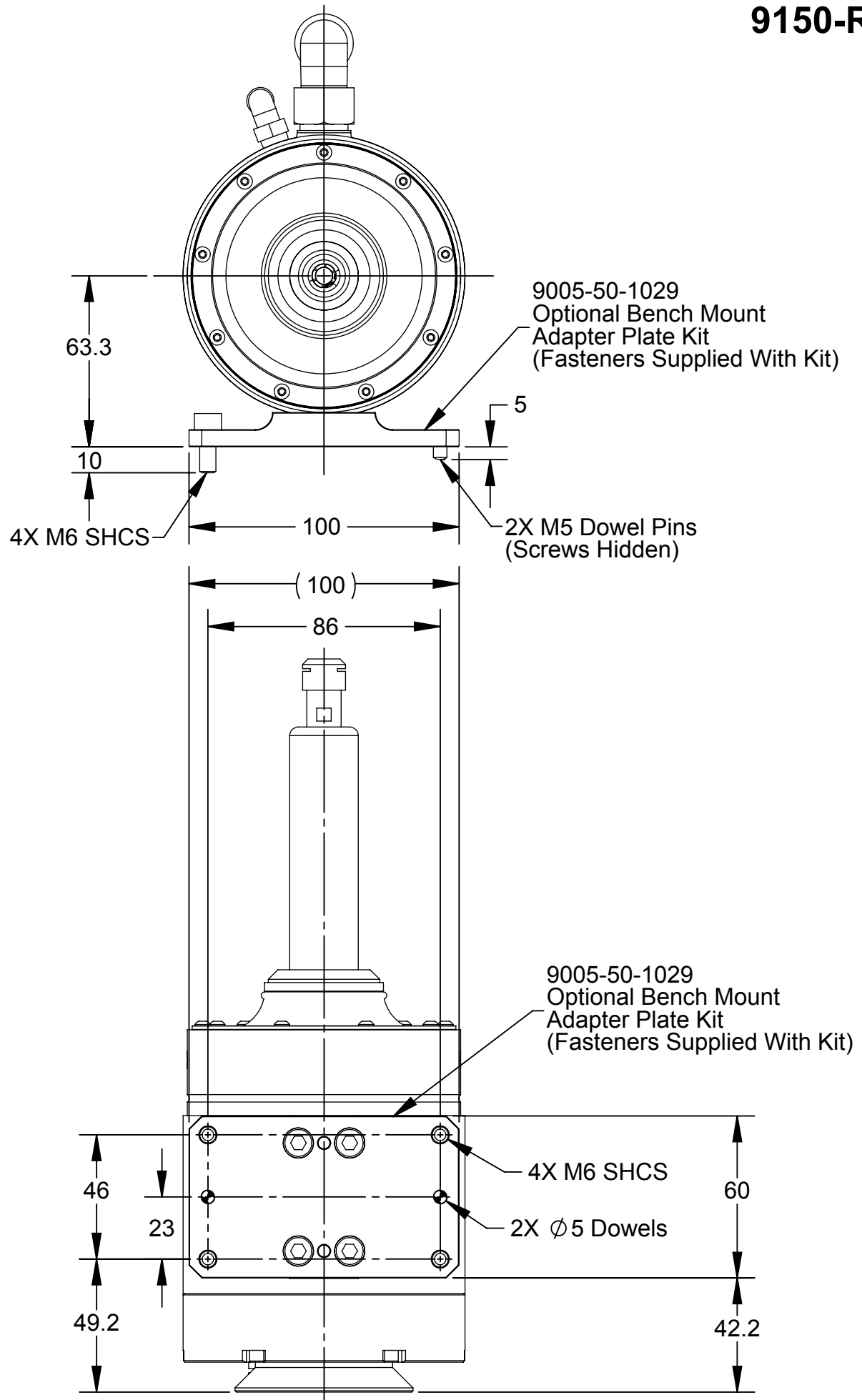
1031 Goodworth Drive, Apex, NC 27539, USA
 Tel: +1.919.772.0115 Email: info@ati-ia.com
 Fax: +1.919.772.8259 www.ati-ia.com
 ISO 9001 Registered Company

PROPERTY OF ATI INDUSTRIAL AUTOMATION, INC. NOT TO BE REPRODUCED IN ANY MANNER EXCEPT ON ORDER OR WITH PRIOR WRITTEN AUTHORIZATION OF ATI.

DRAWN BY: D.Lawson-6/16/14		TITLE	
CHECKED BY: D.Swanson-6/16/14		RS-660 Single-Axis, Radially-Compliant, Deburring Tool Customer Drawing	
PROJECT # 140217-1	SHEET 1 OF 3	SCALE 1:2	SIZE B
DRAWING NUMBER 9630-50-RS-660-ER SERIES		REVISION 02	

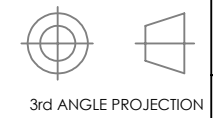
Rev.	Description	Initiator	Date
-	See Sheet1	-	-

9150-RS-660 Mounting Options



NOTES: UNLESS OTHERWISE SPECIFIED.

DO NOT SCALE DRAWING. ALL DIMENSIONS ARE IN MILLIMETERS.

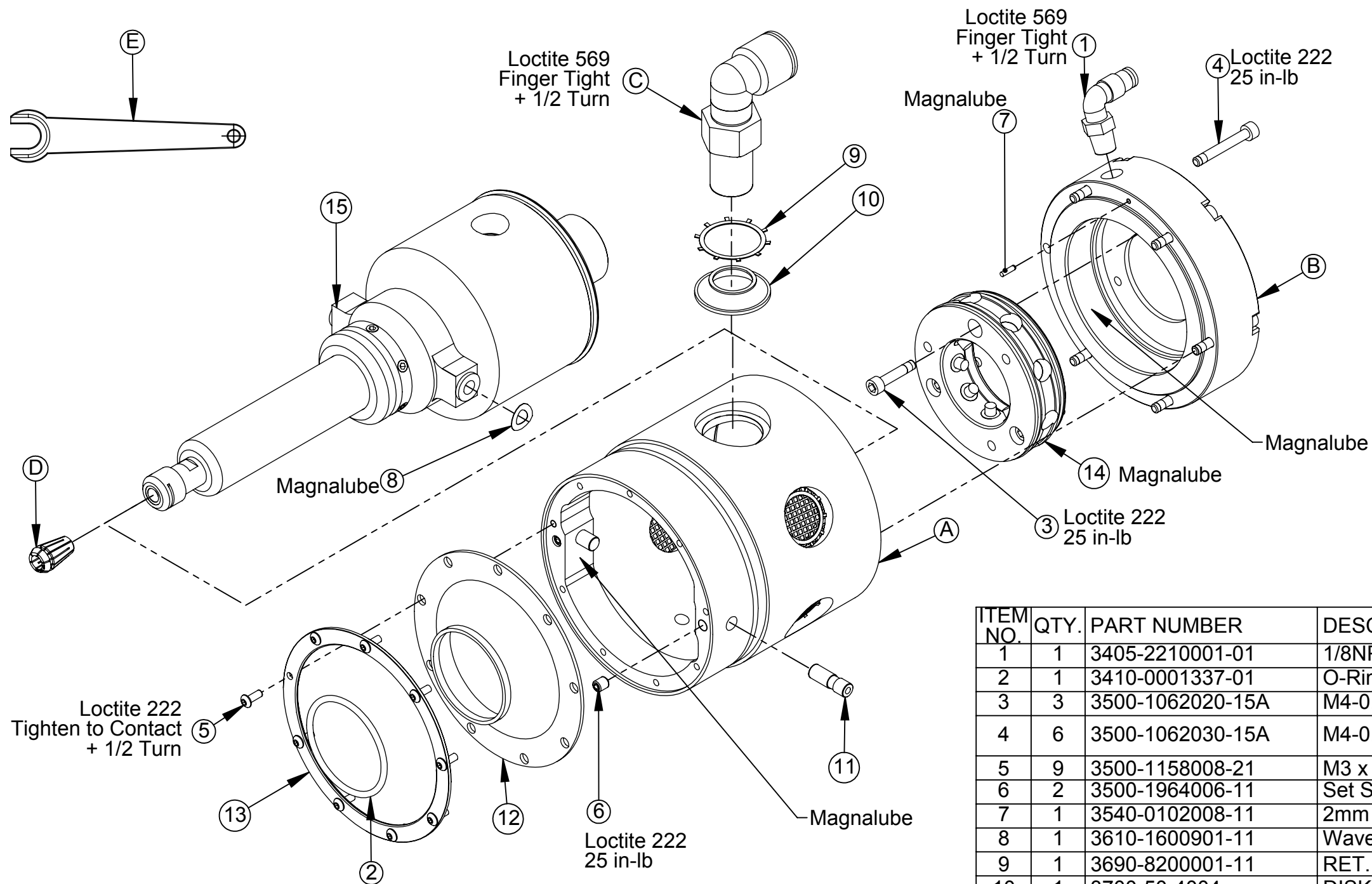


1031 Goodworth Drive, Apex, NC 27539, USA
Tel: +1.919.772.0115 Email: info@ati-ia.com
Fax: +1.919.772.8259 www.ati-ia.com
ISO 9001 Registered Company

PROPERTY OF ATI INDUSTRIAL AUTOMATION, INC. NOT TO BE REPRODUCED IN ANY MANNER EXCEPT ON ORDER OR WITH PRIOR WRITTEN AUTHORIZATION OF ATI.

DRAWN BY: D.Lawson-6/16/14		TITLE	
CHECKED BY: D.Swanson-6/16/14		RS-660 Single-Axis, Radially-Compliant, Deburring Tool Customer Drawing	
PROJECT # 140217-1	SHEET 2 OF 3	SCALE 1:2	SIZE B
DRAWING NUMBER 9630-50-RS-660-ER SERIES		REVISION 02	

Rev.	Description	Initiator	Date
-	See Sheet1	-	-



ITEM NO.	QTY.	PART NUMBER	DESCRIPTION
1	1	3405-2210001-01	1/8NPT Swivel Elbow, 5/32 (4mm) PL Tubing
2	1	3410-0001337-01	O-Ring, AS568-127, Viton, D75
3	3	3500-1062020-15A	M4-0.7 x 20mm SHCS, Blue, Pre-Applied
4	6	3500-1062030-15A	M4-0.7 x 30mm SHCS, Blue, Pre-Applied
5	9	3500-1158008-21	M3 x 8mm SBHCS, SS
6	2	3500-1964006-11	Set Screw, M5x6, Cup Point, Alloy
7	1	3540-0102008-11	2mm x 8mm Dowel Alloy Steel
8	1	3610-1600901-11	Wave Spring, 1/2" OD, .09" Tall, 2.5#, Steel
9	1	3690-8200001-11	RET.,INT. 1.25" 5005-125
10	1	3700-50-4004	DISK, RUBBER, FLEXDEBURR 660
11	2	3700-50-4206	Pin, Pivot, 20.25mm
12	1	3700-50-4207	Disk Boot, Front Pivot RC/RS-660/1000
13	1	3700-50-4208	Retainer Ring, Disk Boot, Front Pivot, RS-660/RC-1000
14	1	9005-50-1035	Ring Cylinder Assembly, Front Pivot, RS-660/RC-1000
15	1	9005-50-1042	Motor Assembly, RS-660

ITEM NO	PART NUMBER	DESCRIPTION
A	9005-50-1041	Front Housing Assembly, RC/RS-660, Orange
	9005-50-1043	Front Housing Assembly, RC/RS-660, Black
B	3700-50-4201	Rear Housing, RC/RS-660, Orange
	3700-50-4216	Rear Housing, RC/RS-660, Black
C	9005-50-1030	Fitting, Spindle Supply, 1/2"
	9005-50-1040	Fitting, Spindle Supply, 12mm
D	9150-RC-C-87694477	ER-11 COLLET, 6mm-1/4"
	9150-RC-C-22768	ER-11 COLLET, 6mm
E	9150-RC-T-11058	ER-11 Collet Wrench
	9150-RC-T-12475	7/16" Collet Wrench

NOTES: UNLESS OTHERWISE SPECIFIED.

DO NOT SCALE DRAWING. ALL DIMENSIONS ARE IN MILLIMETERS.



3rd ANGLE PROJECTION



1031 Goodworth Drive, Apex, NC 27539, USA
 Tel: +1.919.772.0115 Email: info@ati-ia.com
 Fax: +1.919.772.8259 www.ati-ia.com
 ISO 9001 Registered Company

PROPERTY OF ATI INDUSTRIAL AUTOMATION, INC. NOT TO BE REPRODUCED IN ANY MANNER EXCEPT ON ORDER OR WITH PRIOR WRITTEN AUTHORIZATION OF ATI.

DRAWN BY: D.Lawson-6/16/14		TITLE	
CHECKED BY: D.Swanson-6/16/14		RS-660 Single-Axis, Radially-Compliant, Deburring Tool Customer Drawing	
PROJECT # 140217-1	SHEET 3 OF 3	SCALE 1:2	REVISION 02
DRAWING NUMBER 9630-50-RS-660-ER SERIES		SIZE B	