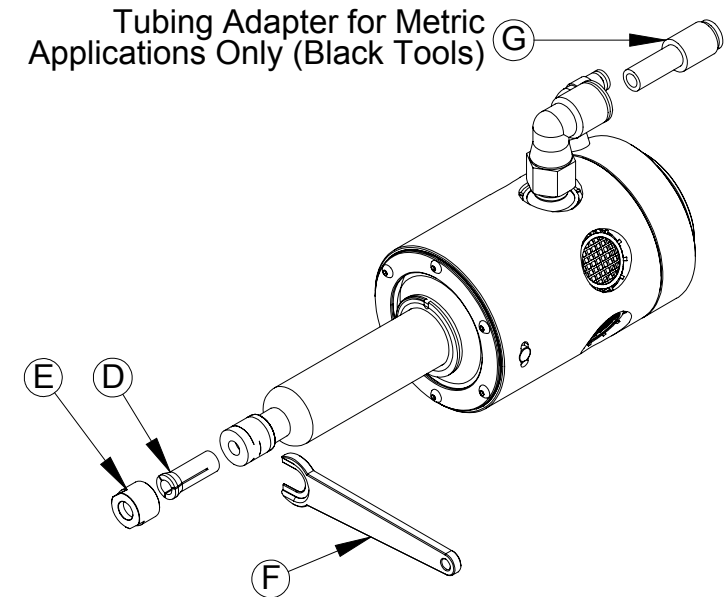
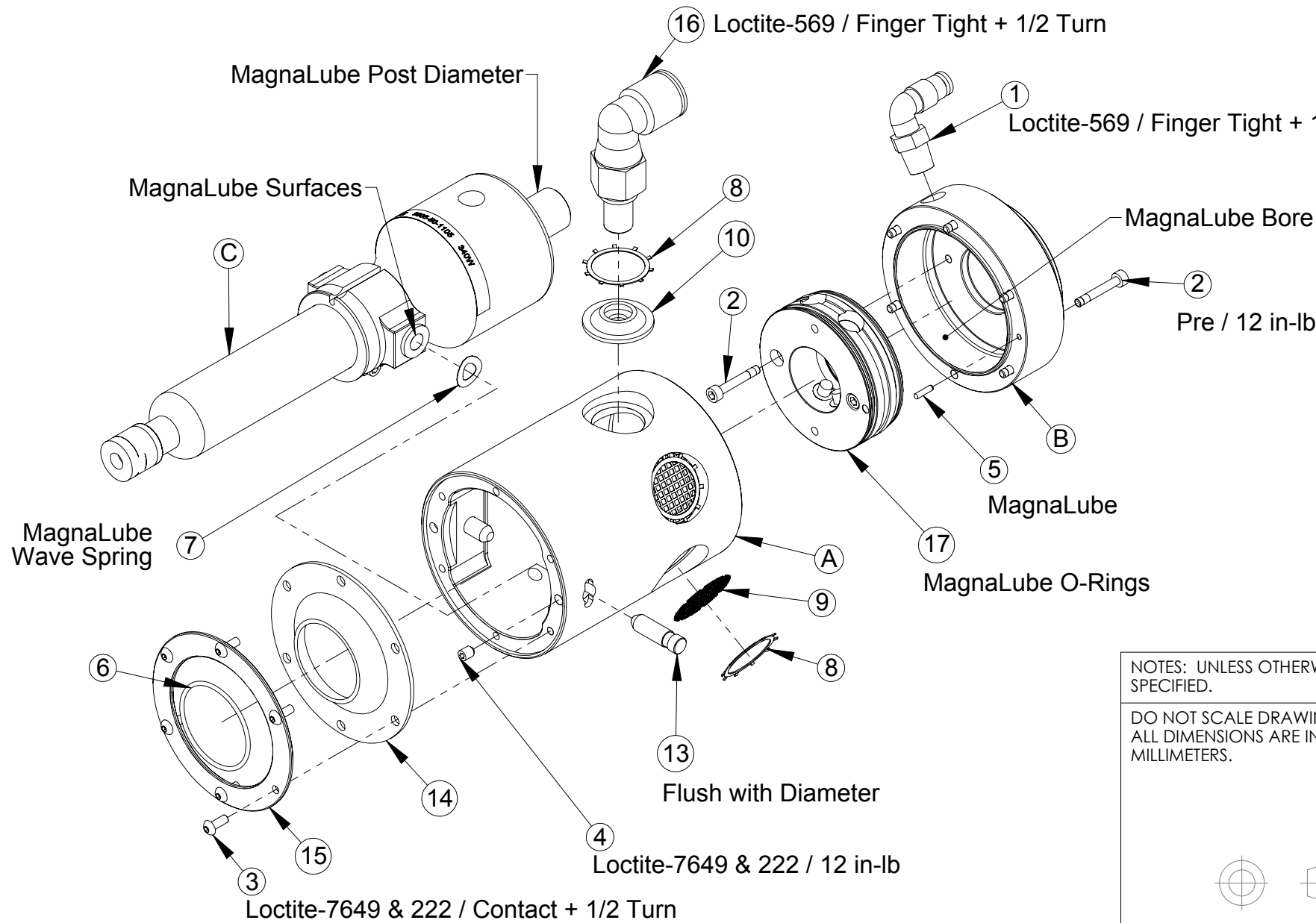


Rev.	Description	Initiator	Date
04	ECO 14345; Added RS-300 Motor (See Item C in Table)	SZJ	3/16/2016

Metric Deburring Tools are Anodized Black
 Inch Deburring Tools are Anodized Orange



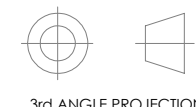
ITEM	APPLICATION	QTY.	PART. NO.	DESCRIPTION
A	RS-300, RS-340	1	3700-50-3066	Front Housing, Orange
	RS-300-E, RS-340-E	1	3700-50-3075	Front Housing, Black
B	RS-300, RS-340	1	3700-50-3067	Rear Housing, Orange
	RS-300-E, RS-340-E	1	3700-50-3076	Rear Housing, Black
C	RS-340, RS-340-E	1	9005-50-1105	Motor Assembly, RS-340
	RS-300, RS-300-E	1	9005-50-1220	Motor Assembly, RS-300
D OPTIONAL / SPARE COLLETS	All	OPT.	9150-RC-C-12442	3mm Collet
		OPT.	9150-RC-C-12443	1/8" Collet
		OPT.	9150-RC-C-12444	3/16" Collet
		OPT.	9150-RC-C-12445	6mm Collet (Standard on Metric Models)
		OPT.	9150-RC-C-12446	1/4" Collet (Standard on Inch Models)
E	All	1	3700-50-3081	Collet Nut (.450 x .318 Hole)
		1	3700-50-3082	Collet Nut (.450 x .254 Hole)
F	All	OPT.	9150-RC-T-12475	7/16" [11mm] Collet Wrench
		OPT.	9150-RC-T-12479	9/16" [14.5mm] Collet Wrench



ITEM NO.	QTY.	PART NUMBER	DESCRIPTION
1	1	3405-2210001-01	1/8NPT Swivel Elbow, 5/32 (4mm) PL Tubing
2	8	3500-1058020-15A	M3 x 20mm SHCS Blue Dyed Magni-565, ND Microspheres
3	6	3500-1158008-21	M3 X 8 BHCS, SS
4	2	3500-1962005-11	Set Screw M4 x 5 Cup Point
5	1	3540-0102008-11	Dia 2mm x 8mm Dowel Pin
6	1	3610-0340001-21	GARTER SPRING, RC 340
7	1	3610-1600901-11	Wave Spring, 1/2" OD, .09" Tall, 2.5#, Steel
8	5	3690-7500003-11	RET.,INT. 1" 5005-100
9	4	3700-50-3005	DISK, FILTER, FLEXDEBURR
10	1	3700-50-3006	SUPPLY BOOT, FLEXDEBURR 340
13	2	3700-50-3072	Pivot Pin, 1/4", RS-340
14	1	3700-50-3073	Boot, RS-340
15	1	3700-50-3074	Boot Ring, RS-340
16	1	9005-50-1002	ELBOW FITTING ASSY., FLEXDEBURR
17	1	9005-50-1104	Ring Cylinder Assembly, RS-340

NOTES: UNLESS OTHERWISE SPECIFIED.

DO NOT SCALE DRAWING. ALL DIMENSIONS ARE IN MILLIMETERS.



1031 Goodworth Drive, Apex, NC 27539, USA
 Tel: +1.919.772.0115 Email: info@ati-ia.com
 Fax: +1.919.772.8259 www.ati-ia.com
 ISO 9001 Registered Company

PROPERTY OF ATI INDUSTRIAL AUTOMATION, INC. NOT TO BE REPRODUCED IN ANY MANNER EXCEPT ON ORDER OR WITH PRIOR WRITTEN AUTHORIZATION OF ATI.

DRAWN BY: D.Lawson-5/10/11		TITLE	
CHECKED BY: D.Swanson-5/11/11		RS-300 Series Service Parts	
PROJECT # 110210-1	SHEET 1 OF 1	SCALE 1:2	SIZE B
		DRAWING NUMBER 9630-50-RS-300 Series	REVISION 04