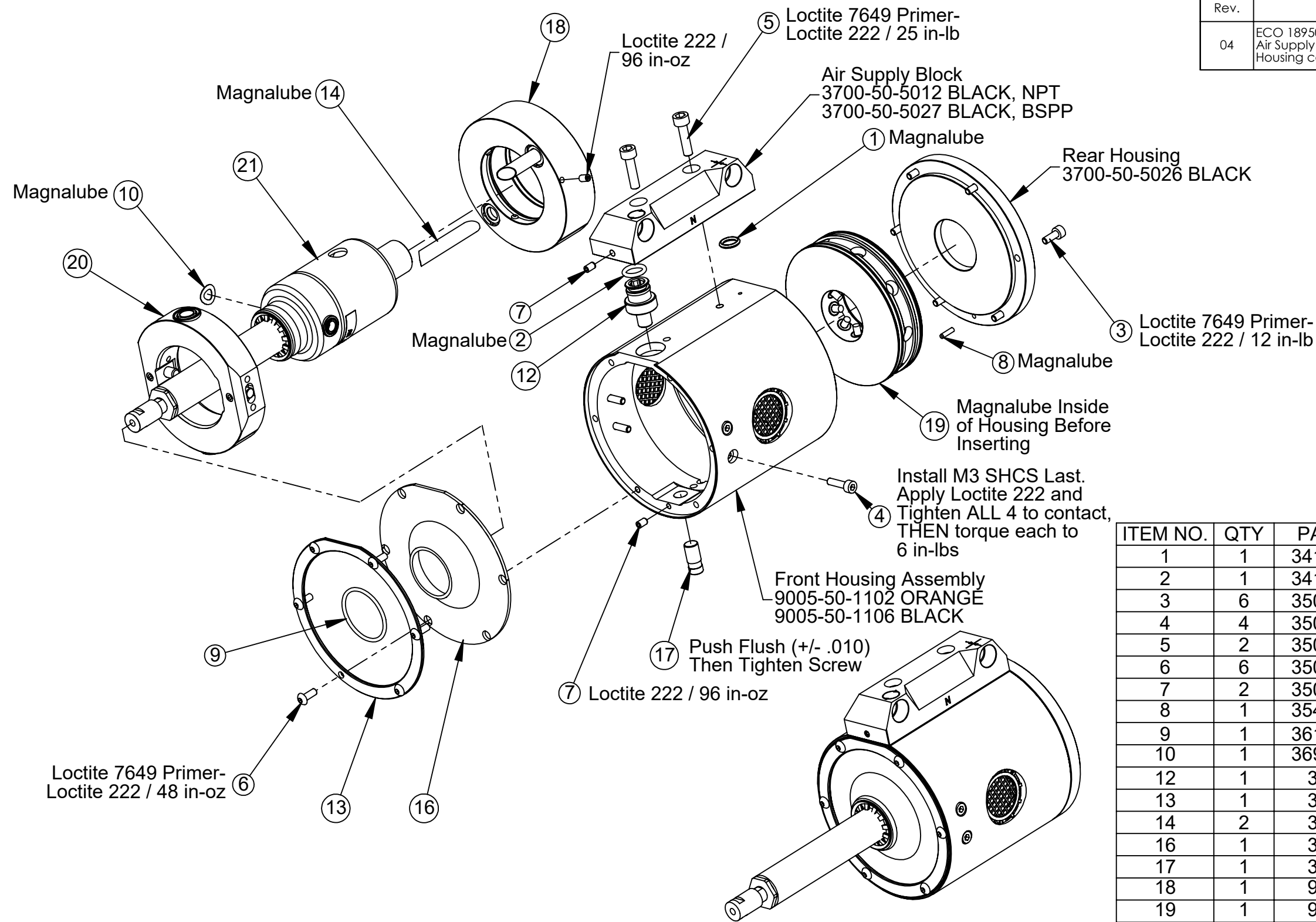


| Rev. | Description | Initiator | Date |
|------|---|-----------|-----------|
| 04 | ECO 18950: Took Out: 9005-50-1103 Replaced With: 9005-50-1055. Air Supply Block callout: Changed to BLACK was ORANGE. Rear Housing callout: Removed 3700-50-5001 ORANGE. | TBC | 4/24/2020 |



| ITEM NO. | QTY | PART NUMBER | DESCRIPTION |
|----------|-----|-----------------|---|
| 1 | 1 | 3410-0001106-01 | O-RING, AS568-010 |
| 2 | 1 | 3410-0001193-01 | O-RING, AS568-011, 5/16x1/16 |
| 3 | 6 | 3500-1058008-12 | M3-0.5 x 8mm SHCS, Zinc |
| 4 | 4 | 3500-1058012-15 | M3-0.5 x 12mm SHCS, Blue |
| 5 | 2 | 3500-1062016-12 | M4-0.7 x 16mm SHCS, Zinc |
| 6 | 6 | 3500-1158008-21 | M3 X 8 BHCS, SS |
| 7 | 2 | 3500-1958005-11 | M3 X 5 Set screw |
| 8 | 1 | 3540-0102008-11 | Dowel, M2 x 8mm, Alloy Steel |
| 9 | 1 | 3610-0235001-21 | GARTER SPRING, RC 150 |
| 10 | 1 | 3690-0600000-11 | Wave Spring, ID.200, OD .370, Thk .0090 |
| 12 | 1 | 3700-50-5006 | PIVOT FITTING, FDB150 |
| 13 | 1 | 3700-50-5008 | BOOT RING, FDB150 |
| 14 | 2 | 3700-50-5010 | AIR TUBE, FDB150 |
| 16 | 1 | 3700-50-5014 | FRONT BOOT, FDB-150 |
| 17 | 1 | 3700-50-5033 | RC-151, 1/4" Pivot Pin |
| 18 | 1 | 9005-50-1050 | Air Supply Ring, FDB150 |
| 19 | 1 | 9005-50-1051 | Ring Cyl. Assy., FDB150 |
| 20 | 1 | 9005-50-1055 | RC-151 Gimbal Ring, Pin Type |
| 21 | 1 | 9005-50-1057 | RC-151 Motor Subassembly, Pin Type |

OPTIONAL/SPARE PARTS NOT SHOWN
(Applicable to all RS-151 Models)

9150-RC-T-12173 Collet Wrench, Combination 1/4 x 9/32

9150-RC-C-12141 1/8" Collet
9150-RC-C-12142 3mm Collet
9150-RC-C-12143 1/16" Collet
9150-RC-C-12144 3/32" Collet
9150-RC-C-12149 Collet Nut

NOTES: UNLESS OTHERWISE SPECIFIED.

DO NOT SCALE DRAWING. ALL DIMENSIONS ARE IN MILLIMETERS.



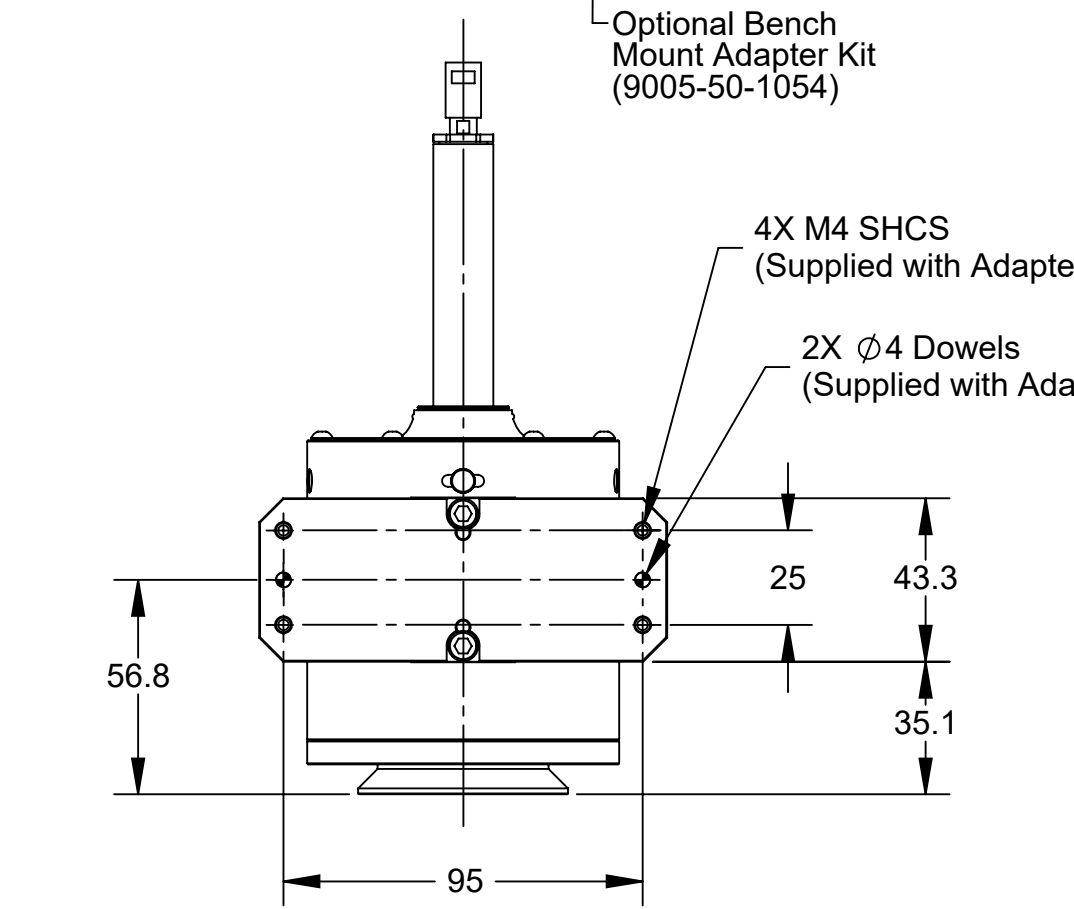
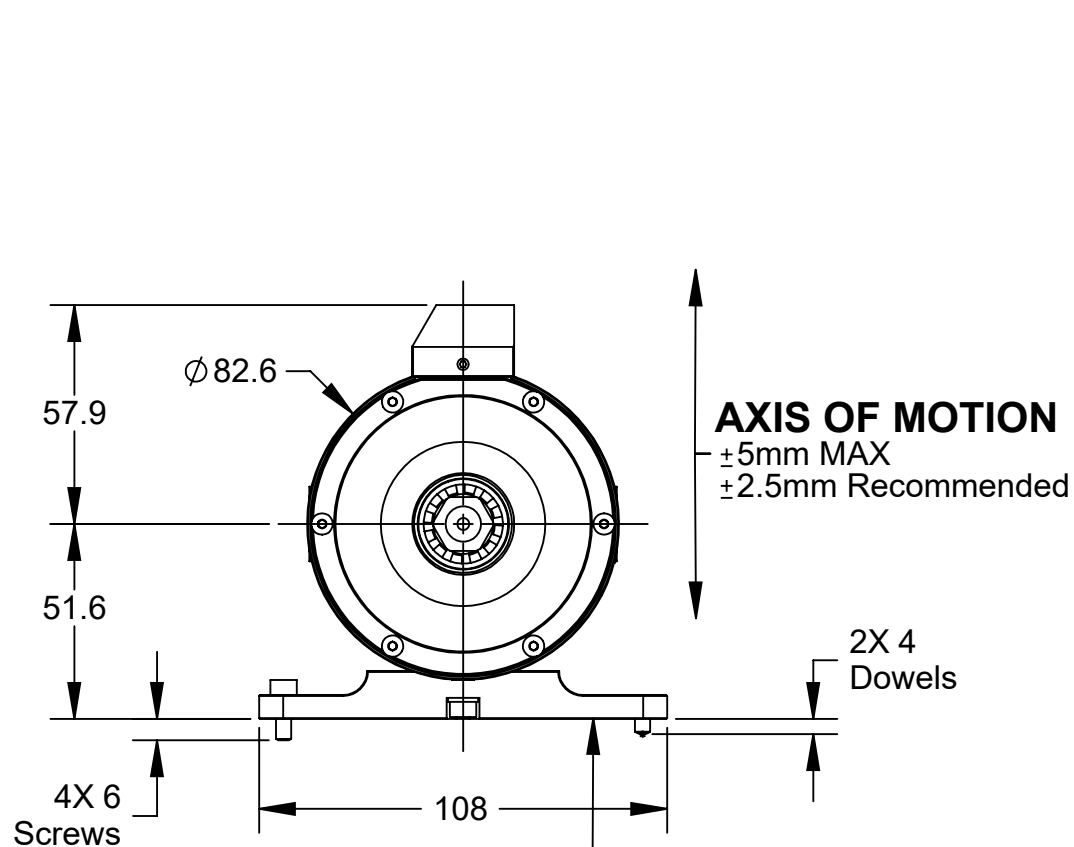
3rd ANGLE PROJECTION



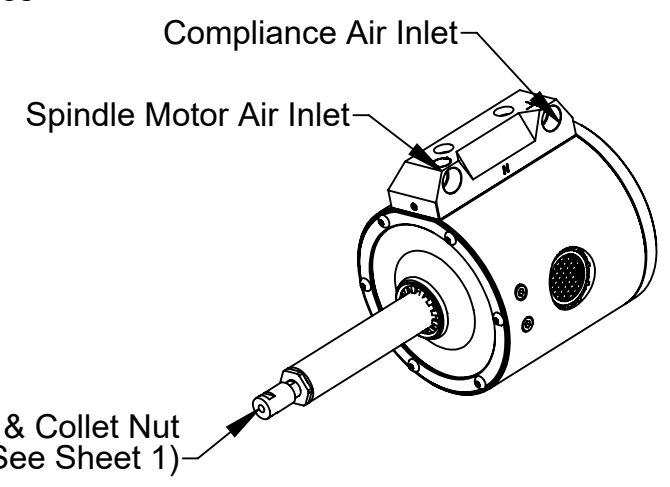
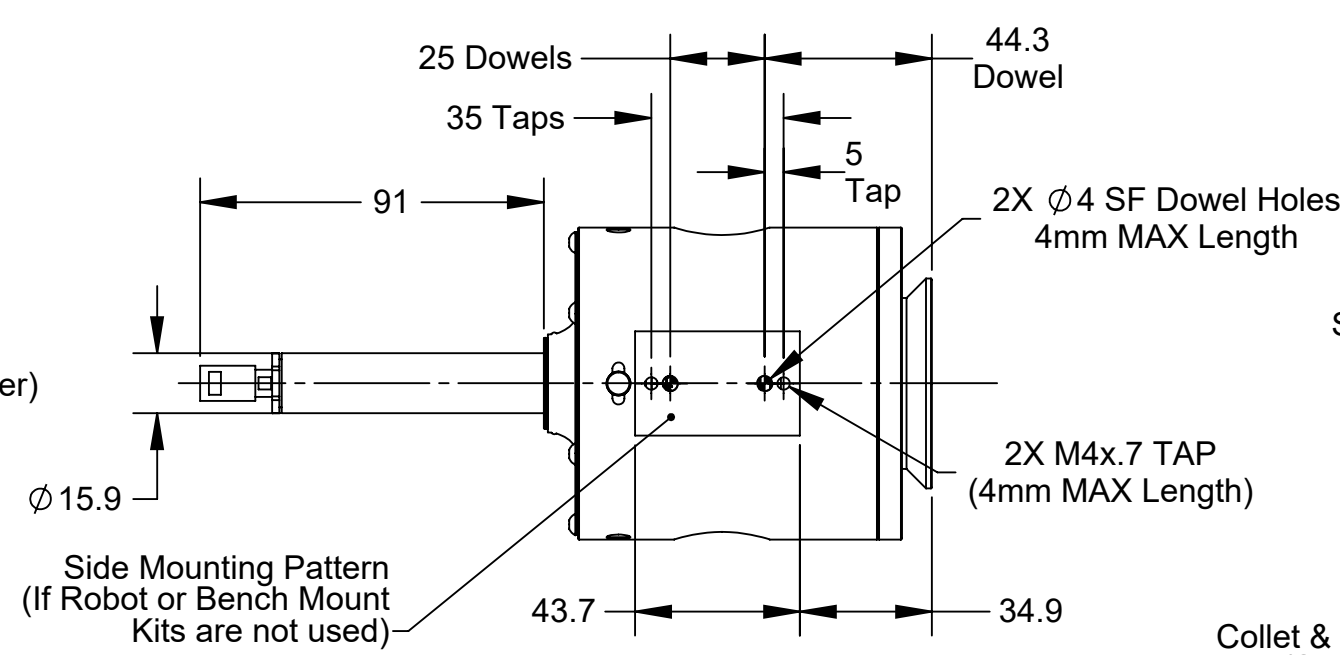
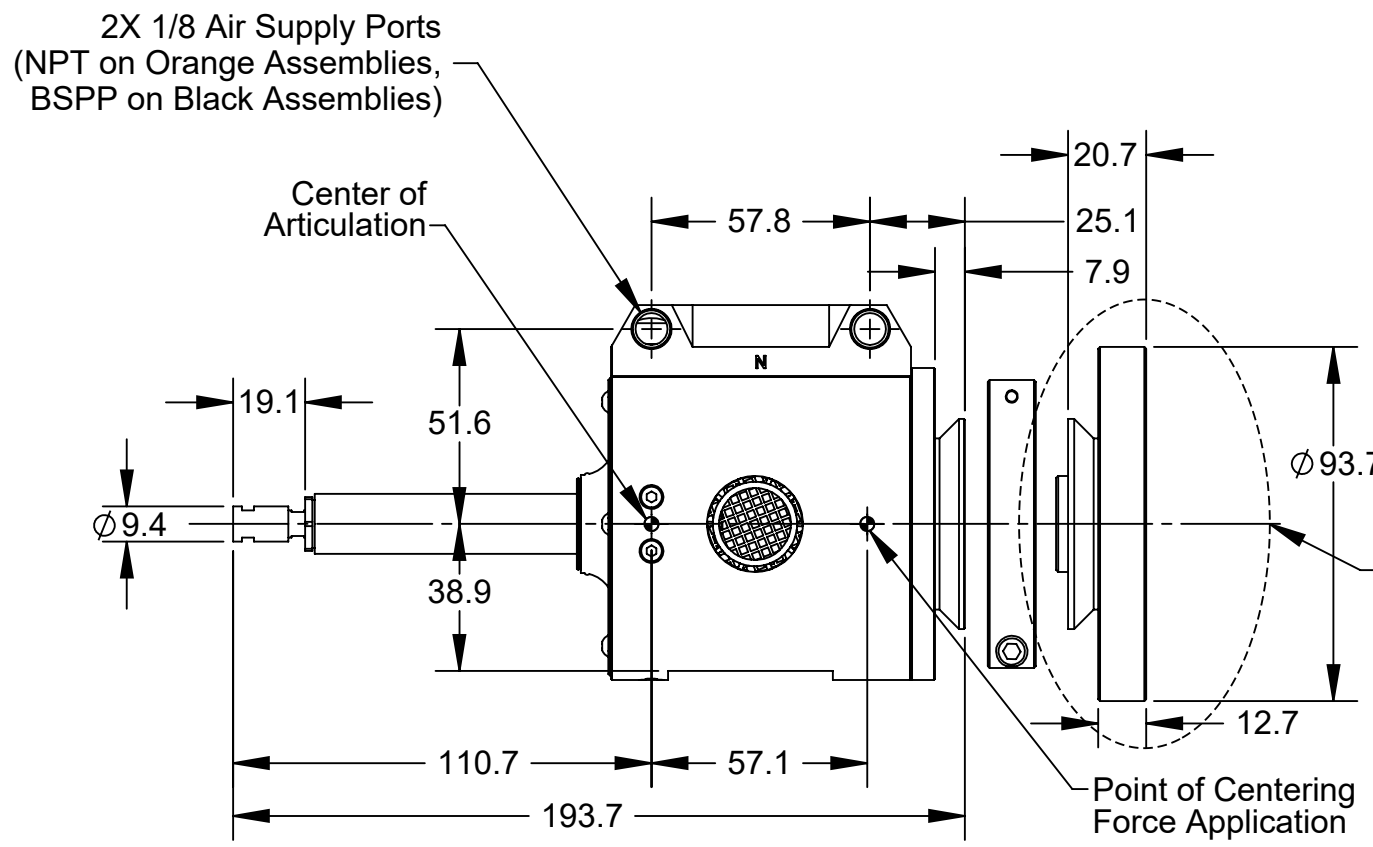
1031 Goodworth Drive, Apex, NC 27539, USA
Tel: +1.919.772.0115 Email: info@ati-ia.com
Fax: +1.919.772.8259 www.ati-ia.com
ISO 9001 Registered Company

PROPERTY OF ATI INDUSTRIAL AUTOMATION, INC. NOT TO BE REPRODUCED IN ANY MANNER EXCEPT ON ORDER OR WITH PRIOR WRITTEN AUTHORIZATION OF ATI.

| | | | |
|--------------------------------|--------------|--|----------|
| DRAWN BY: D.Lawson, 3/15/10 | | TITLE | |
| CHECKED BY: D.Swanson, 3/15/10 | | RS-151 Single Axis Deburring Tool Assembly | |
| PROJECT # 100305-1 | SHEET 1 OF 2 | SCALE 1:2 | SIZE B |
| | | DRAWING NUMBER | REVISION |
| | | 9630-50-RS-151 SERIES | 04 |



NOTES:
 1) Spindle air to be filtered 5 Micron or better, Dry Air (NO OIL) supplied at 90 PSI [6.2 Bar].
 2) Air consumption: Idle 3 CFM [1.42 l/s], Stall 8 CFM [3.78 l/s]
 3) Observe MAX fastener lengths noted above.

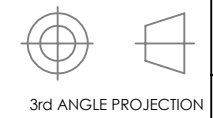


NOTES: UNLESS OTHERWISE SPECIFIED.
 DO NOT SCALE DRAWING. ALL DIMENSIONS ARE IN MILLIMETERS.



1031 Goodworth Drive, Apex, NC 27539, USA
 Tel: +1.919.772.0115 Email: info@ati-ia.com
 Fax: +1.919.772.8259 www.ati-ia.com
 ISO 9001 Registered Company

PROPERTY OF ATI INDUSTRIAL AUTOMATION, INC. NOT TO BE REPRODUCED IN ANY MANNER EXCEPT ON ORDER OR WITH PRIOR WRITTEN AUTHORIZATION OF ATI.



| | | | | |
|--------------------------------|----------|--|------|----------------|
| DRAWN BY: D.Lawson, 3/15/10 | | TITLE | | |
| CHECKED BY: D.Swanson, 3/15/10 | | RS-151 Single Axis Deburring Tool Assembly | | |
| PROJECT # | 100305-1 | SHEET | OF 2 | REVISION |
| SCALE | 1:2 | SIZE | B | DRAWING NUMBER |
| 9630-50-RS-151 SERIES | | 04 | | |