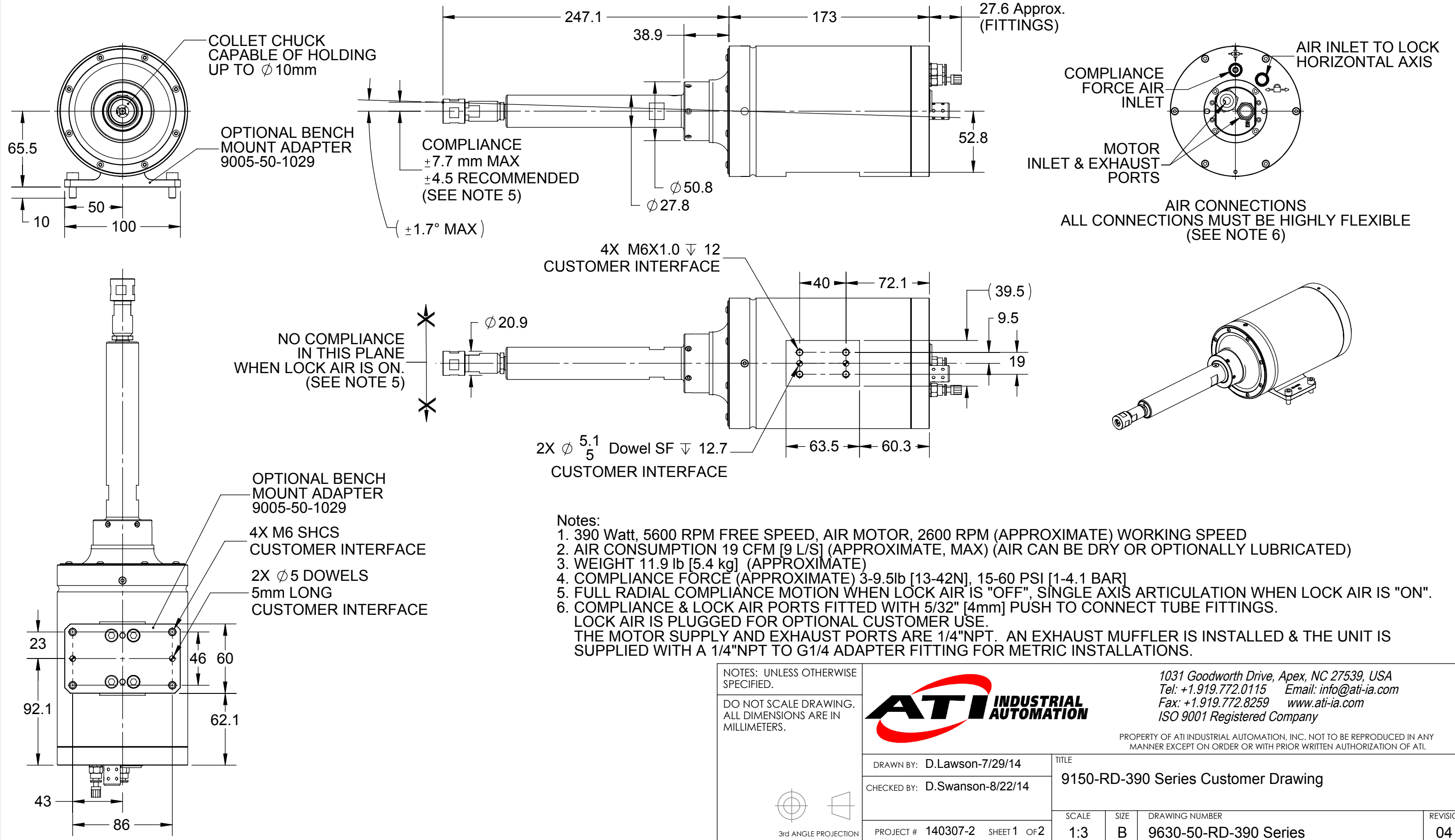


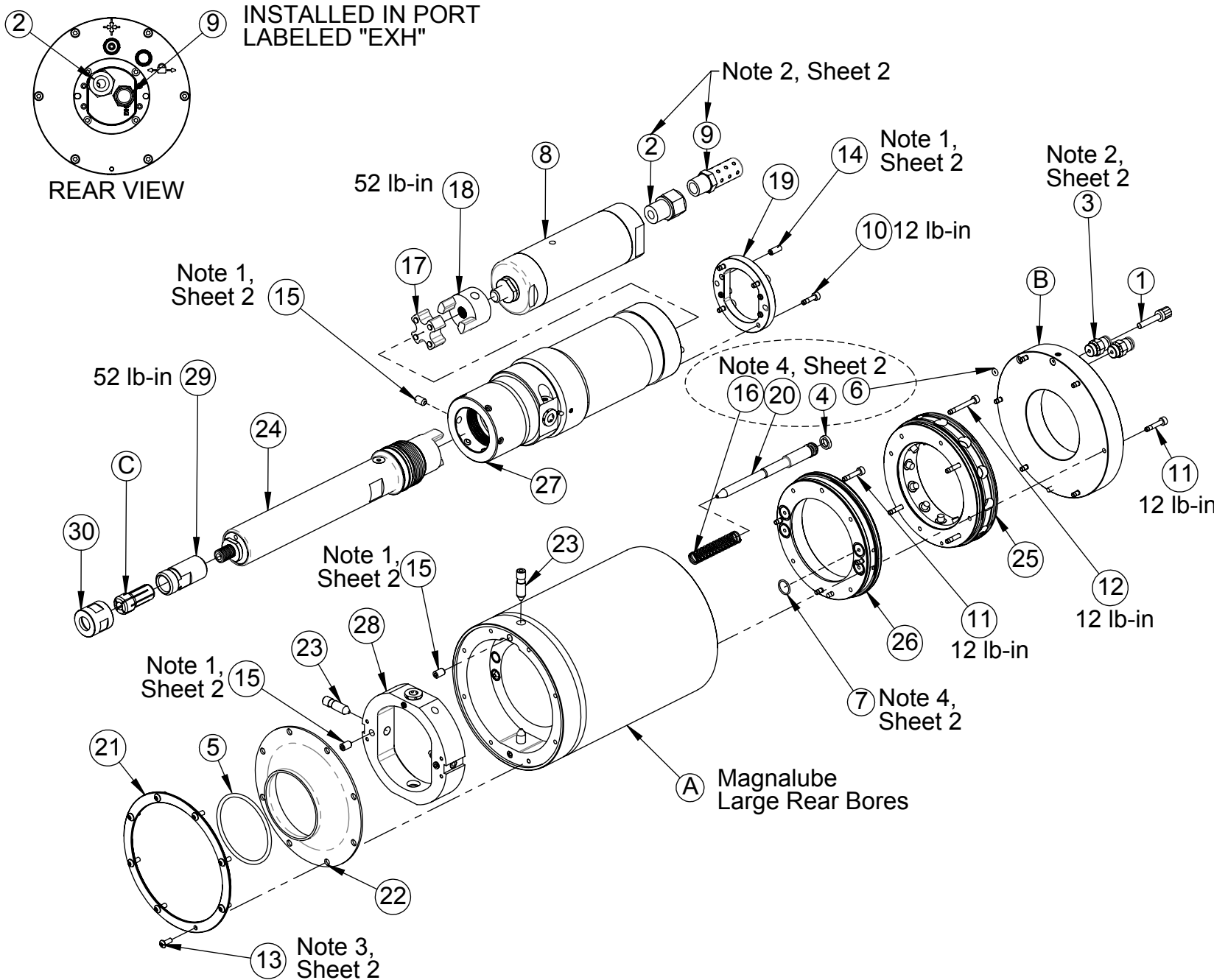
Rev.	Description	Initiator	Date
03	ECO 16681; Sheet 2: Replaced 9005-50-1204 with 9005-50-6035. Replaced 9005-50-1207 with 9005-50-6036. Removed 3610-1600901-11. Replaced 3610-1220001-12 with 3610-1217501-12. Replaced 3700-50-4206 with 3700-50-3219.	TBC	5/24/2018
04	ECO 19185: Removed "Lube Free" from Notes and BOM.	NWB	6/25/2020



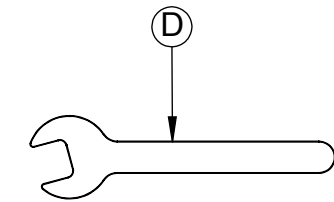
- Notes:
- 390 Watt, 5600 RPM FREE SPEED, AIR MOTOR, 2600 RPM (APPROXIMATE) WORKING SPEED
 - AIR CONSUMPTION 19 CFM [9 L/S] (APPROXIMATE, MAX) (AIR CAN BE DRY OR OPTIONALLY LUBRICATED)
 - WEIGHT 11.9 lb [5.4 kg] (APPROXIMATE)
 - COMPLIANCE FORCE (APPROXIMATE) 3-9.5lb [13-42N], 15-60 PSI [1-4.1 BAR]
 - FULL RADIAL COMPLIANCE MOTION WHEN LOCK AIR IS "OFF", SINGLE AXIS ARTICULATION WHEN LOCK AIR IS "ON".
 - COMPLIANCE & LOCK AIR PORTS FITTED WITH 5/32" [4mm] PUSH TO CONNECT TUBE FITTINGS. LOCK AIR IS PLUGGED FOR OPTIONAL CUSTOMER USE. THE MOTOR SUPPLY AND EXHAUST PORTS ARE 1/4"NPT. AN EXHAUST MUFFLER IS INSTALLED & THE UNIT IS SUPPLIED WITH A 1/4"NPT TO G1/4 ADAPTER FITTING FOR METRIC INSTALLATIONS.

NOTES: UNLESS OTHERWISE SPECIFIED. DO NOT SCALE DRAWING. ALL DIMENSIONS ARE IN MILLIMETERS.			1031 Goodworth Drive, Apex, NC 27539, USA Tel: +1.919.772.0115 Email: info@ati-ia.com Fax: +1.919.772.8259 www.ati-ia.com ISO 9001 Registered Company	
			PROPERTY OF ATI INDUSTRIAL AUTOMATION, INC. NOT TO BE REPRODUCED IN ANY MANNER EXCEPT ON ORDER OR WITH PRIOR WRITTEN AUTHORIZATION OF ATI.	
DRAWN BY: D.Lawson-7/29/14 CHECKED BY: D.Swanson-8/22/14	TITLE 9150-RD-390 Series Customer Drawing			REVISION 04
PROJECT # 140307-2 SHEET 1 OF 2	SCALE 1:3	SIZE B	DRAWING NUMBER 9630-50-RD-390 Series	

INSTALLED IN PORT
LABELED "EXH"



- Notes:
1. Loctite 222 / 12 lb-in
 2. Loctite 569 / Finger Tight + 1/2 Turn
 3. Loctite 222 / Contact + 1/2 Turn
 4. Magnalube



ITEM NO.	PART NUMBER	DESCRIPTION
1	3405-0210005-01	5/32" Tube Fitting Plug, 6900 53-00
2	3405-1030005-01	Fitting, Adapter, 1/4NPT to G1/4
3	3405-1230003-01	Fitting, Straight, 1/8UniX4mm Tube
4	3410-0001102-01	Seal, 0.38 O.D. x 0.25 I.D.
5	3410-0001112-01	O-RING, AS568-132
6	3410-0001113-01	O-Ring, AS568A-004, Buna-N, D70
7	3410-0001412-01	O-Ring, 9.5mm x 1mm, Buna-N, D70
8	3490-0001054-01	Motor, 390 W, LZB-33LA060-12 (8411-0306-98)
9	3490-1010004-00	MUFFLER, 1/4NPT, H-FLOW, McM9835K42
10	3500-1058012-15A	M3-0.5 x 12mm SHCS, Blue, Pre-Applied
11	3500-1058016-15A	M3-0.5 x 16mm SHCS, Blue, Pre-Applied
12	3500-1058025-15A	M3-0.5 x 25mm SHCS, Blue, Pre-Applied
13	3500-1158008-21	M3 x 8mm SBHCS, SS
14	3500-1962010-11	Set Screw M4 x 10 Cup Point
15	3500-1964008-11	M5 X 8MM SET SCREW
16	3610-1217501-12	Spring, 1.75"Lg.,.360"OD, .032"Wire, 4.6 lb/in, Steel, Zn
17	3690-0000085-51	Coupling Spider, L050 Size, Hytel
18	3700-50-3205	Flexible Coupling, Size-B, 3/8-24
19	3700-50-3209	Motor Keeper Plate, RD-390
20	3700-50-3212	Lock Piston, RD-390
21	3700-50-3215	Boot Ring, RD-390
22	3700-50-3216	Boot, RD-390
23	3700-50-3219	Pin, Pivot, 24.25mm
24	9005-50-1202	Spindle Assembly, RD-390
25	9005-50-1205	Ring Cylinder Assembly, RD-390
26	9005-50-1206	Lock Manifold Assembly, RD-390
27	9005-50-6035	Motor Housing Assembly, RD-390, Adjustable Bushing
28	9005-50-6036	Gimbal Ring Assembly, RD-390, Adjustable Bushing
29	9150-ACT-C-CB2200	DA200 ColletBody
30	9150-ACT-C-CBC200	DA200 Collet Nut

** 9150-RD-390-NL is provided with a 1/4" Collet.
9150-RD-390-NL-E is provided with both 6mm & 8mm Collets.

ITEM NO.	PART NUMBER	DESCRIPTION
A	9005-50-1200	Front Housing Assembly, RD-390, Black
B	9005-50-1201	Rear Housing Assembly, RD-390, Black
C**	9150-ACT-C-84911163	1/4" DA-200 Double Angle Collet
	9150-ACT-C-DA200-6MM	6mm DA-200 Double Angle Collet
	9150-ACT-C-DA200-8MM	8mm DA-200 Double Angle Collet
D	9150-ACT-T-841015MM	ACT-390 15mm Spanner Wrench
	9150-ACT-T-841056IN	ACT-390 10ga, 9/16" Spanner Wrench
	9150-ACT-T-841075IN	ACT-390 10ga, 3/4" Spanner Wrench

NOTES: UNLESS OTHERWISE SPECIFIED.

DO NOT SCALE DRAWING. ALL DIMENSIONS ARE IN MILLIMETERS.



3rd ANGLE PROJECTION



1031 Goodworth Drive, Apex, NC 27539, USA
Tel: +1.919.772.0115 Email: info@ati-ia.com
Fax: +1.919.772.8259 www.ati-ia.com
ISO 9001 Registered Company

PROPERTY OF ATI INDUSTRIAL AUTOMATION, INC. NOT TO BE REPRODUCED IN ANY MANNER EXCEPT ON ORDER OR WITH PRIOR WRITTEN AUTHORIZATION OF ATI.

DRAWN BY: D.Lawson-7/29/14		TITLE	
CHECKED BY: D.Swanson-8/22/14		9150-RD-390 Series Customer Drawing	
PROJECT # 140307-2	SHEET 2 OF 2	SCALE 1:4	SIZE B
		DRAWING NUMBER	REVISION
		9630-50-RD-390 Series	04