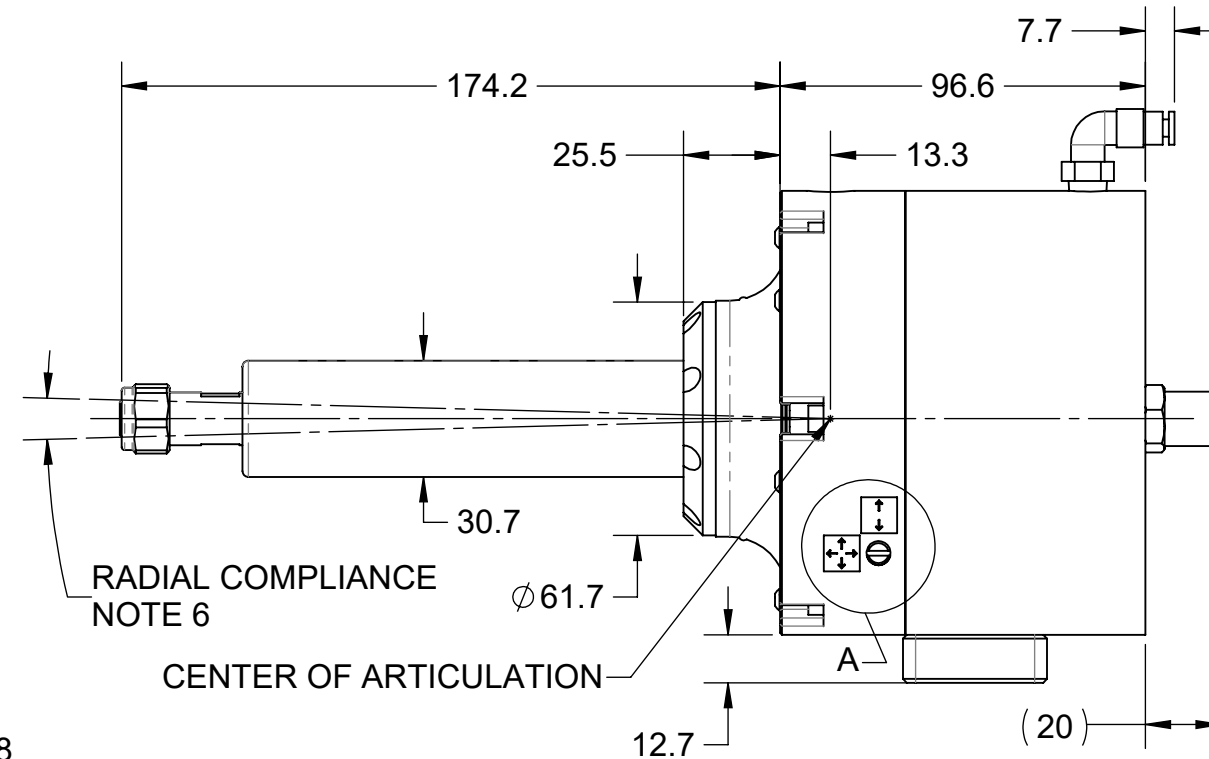
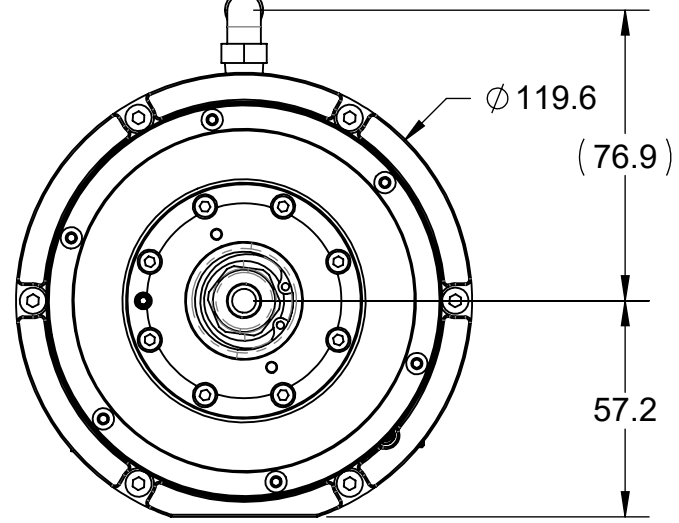


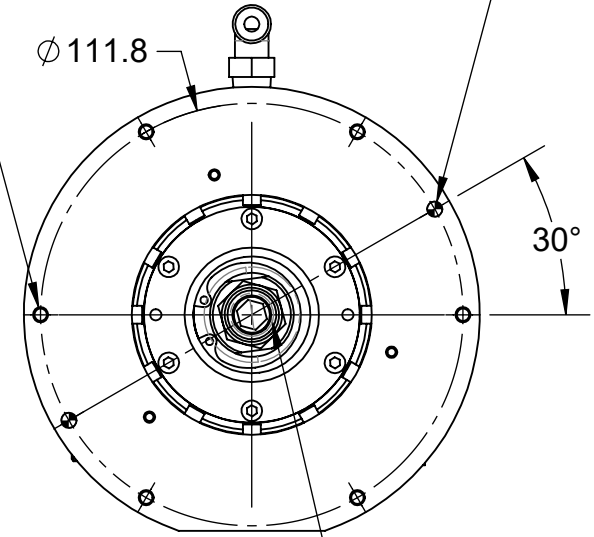
REV.	DESCRIPTION	INITIATOR	DATE
05	ECO 20615:Sheet 2, deleted item 14 from the table. All units are now built with 3700-50-9083.	BAW	11/29/2022

COMPLIANCE AIR  
PUSH TO CONNECT FITTING  
5/32" (4mm) TUBING  
NOTE 5



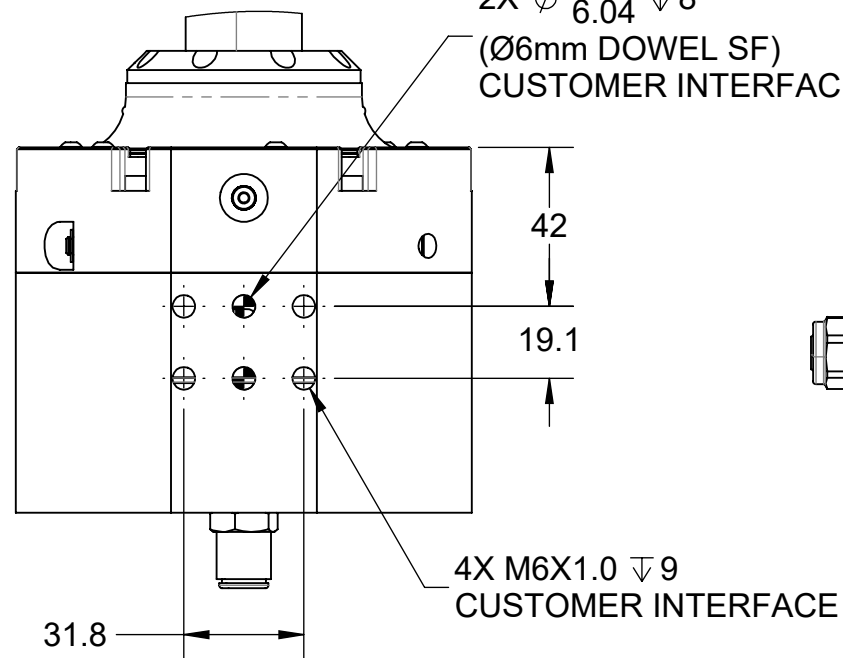
6X M4X0.7  $\nabla$ 9  
EQUALLY SPACED  
CUSTOMER INTERFACE

2X  $\phi$  4.06  $\nabla$  12.7  
4.03  
( $\phi$ 4mm DOWEL SF)  
CUSTOMER INTERFACE



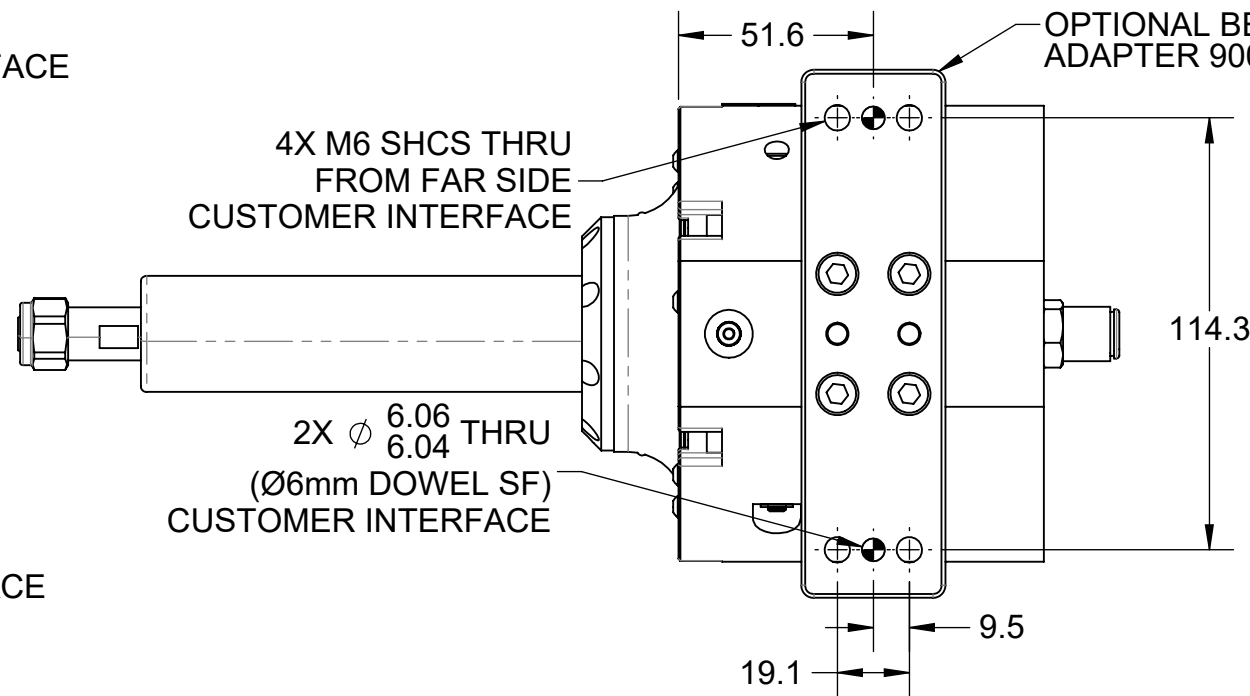
SUPPLY AIR  
PUSH TO CONNECT FITTING  
3/8" (10mm) TUBING  
NOTE 3

2X  $\phi$  6.06  $\nabla$ 8  
6.04  
( $\phi$ 6mm DOWEL SF)  
CUSTOMER INTERFACE

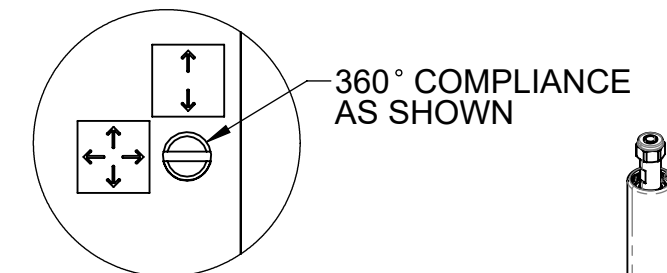


4X M6 SHCS THRU  
FROM FAR SIDE  
CUSTOMER INTERFACE

2X  $\phi$  6.06 THRU  
6.04  
( $\phi$ 6mm DOWEL SF)  
CUSTOMER INTERFACE



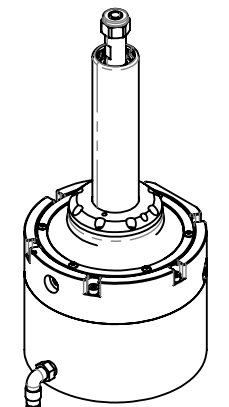
OPTIONAL BENCH MOUNT  
ADAPTER 9005-50-6091



DETAIL A  
SCALE 1 : 1

SLOT PARALLEL TO SPINDLE  
BOTH AXES UNLOCKED

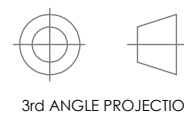
SLOT PERPENDICULAR TO SPINDLE  
SINGLE AXIS LOCKOUT



- Notes:
- 490 WATT, 30000 RPM FREE SPEED, LUBRICATED AIR MOTOR, 15000 RPM (APPROXIMATE) WORKING SPEED.
  - SPINDLE AIR CONSUMPTION 14-19 l/s (30-40 CFM).
  - MOTOR AIR QUALITY: 90PSI [6.2 BAR], FILTERED 5 MICRON OR BETTER, LUBRICATED AT 1-2 DROPS/MIN.
  - WEIGHT 7.4 lb [3.36 kg]
  - COMPLIANCE FORCE 1.5-12 lb [6.5-53.4 N], 15-60 PSI [1-4.1 BAR].
  - RADIAL COMPLIANCE TRAVEL AT COLLET = MAX  $\pm$ 3° (approximately .325", 8.3mm).
  - FULL RADIAL COMPLIANCE MOTION WHEN LOCKOUT ROD IS UNLOCKED. SINGLE AXIS ARTICULATION WHEN LOCKOUT ROD IS LOCKED.

NOTES: UNLESS OTHERWISE SPECIFIED.

DO NOT SCALE DRAWING.  
ALL DIMENSIONS ARE IN  
MILLIMETERS.



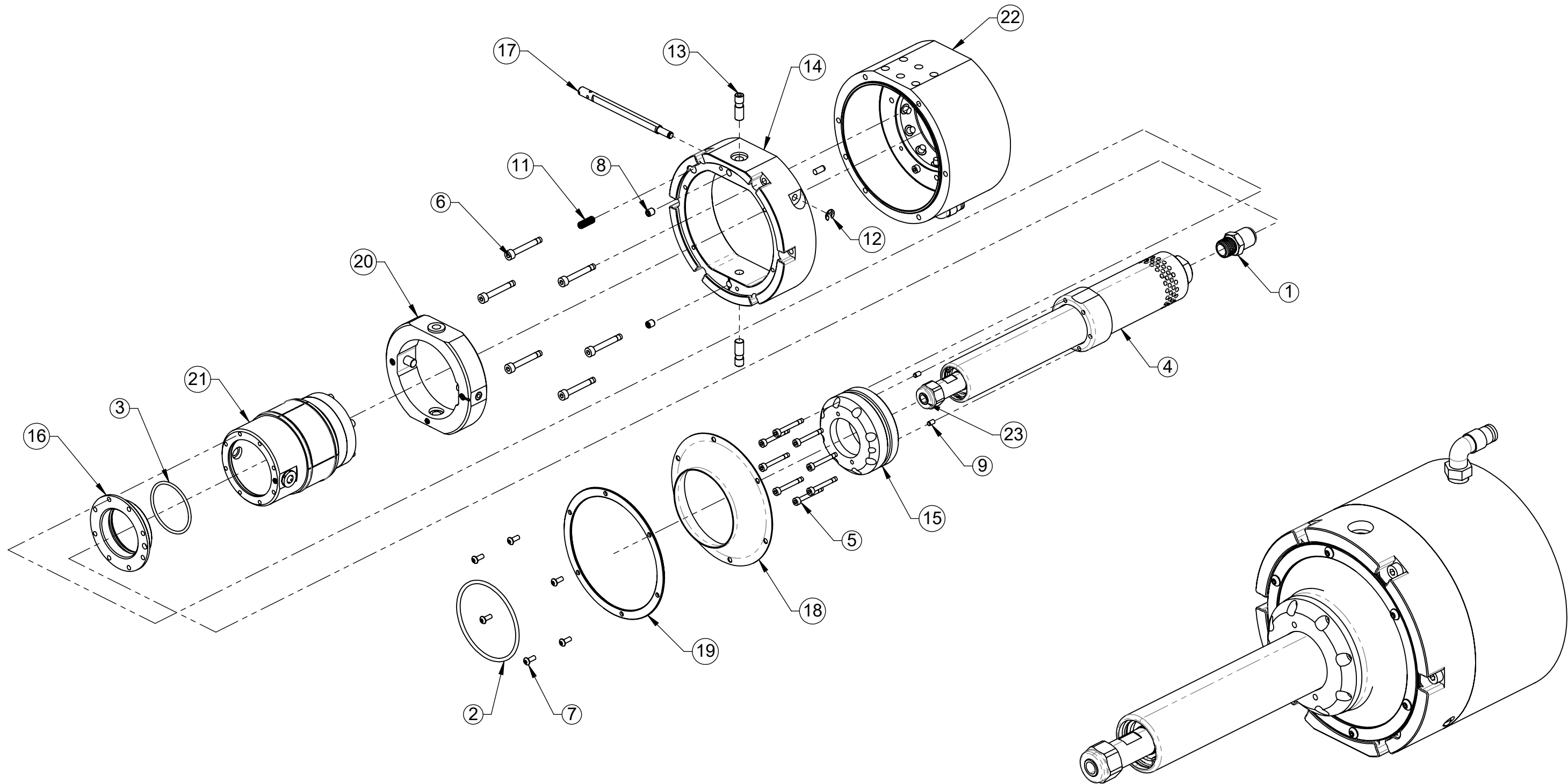
3rd ANGLE PROJECTION



1031 Goodworth Drive, Apex, NC 27539, USA  
Tel: +1.919.772.0115 Email: info@ati-ia.com  
Fax: +1.919.772.8259 www.ati-ia.com  
ISO 9001 Registered Company

PROPERTY OF ATI INDUSTRIAL AUTOMATION, INC. NOT TO BE REPRODUCED IN ANY MANNER EXCEPT ON ORDER OR WITH PRIOR WRITTEN AUTHORIZATION OF ATI.

DRAWN BY: D. Bohle 1/8/2019		TITLE	
CHECKED BY: K. Zachary 5/13/2019		RCV-490 Customer Drawing	
PROJECT # 180329-3	SHEET 1 OF 2	SCALE 1:4	SIZE B
DRAWING NUMBER 9630-50-RCV-490		REVISION 05	



\*9150-RCV-490 is provided with a 1/4" Collet.  
 \*9150-RCV-490-E is provided with both 6mm and 8mm Collets.

ITEM NO.	PART NUMBER	DESCRIPTION
1	3405-1230021-01	Fitting, Straight, 1/4NPT x 10mm Tube, Nickel Plated Brass
	3405-1210027-01	Fitting, Straight, 3/8" Tube, 1/4" NTP Male, 16mm Ext. Hex, Nickel Plated Brass
22	9005-50-6062	Rear Housing Assembly, RCV-490, Orange
	9005-50-6093	Rear Housing Assembly, RCV-490, Black
23*	3710-50-1463	1/4" ER-11 Collet
	3710-50-1464	6mm ER-11 Collet
	3710-50-1465	8mm ER-11 Collet

NOTES: UNLESS OTHERWISE SPECIFIED.

DO NOT SCALE DRAWING. ALL DIMENSIONS ARE IN MILLIMETERS.



3rd ANGLE PROJECTION

1031 Goodworth Drive, Apex, NC 27539, USA  
 Tel: +1.919.772.0115 Email: info@ati-ia.com  
 Fax: +1.919.772.8259 www.ati-ia.com  
 ISO 9001 Registered Company

PROPERTY OF ATI INDUSTRIAL AUTOMATION, INC. NOT TO BE REPRODUCED IN ANY MANNER EXCEPT ON ORDER OR WITH PRIOR WRITTEN AUTHORIZATION OF ATI.

DRAWN BY: D. Bohle 1/8/2019		TITLE	
CHECKED BY: K. Zachary 5/13/2019		RCV-490 Customer Drawing	
PROJECT # 180329-3	SHEET 2 OF 2	SCALE	SIZE
		1:5	B
		DRAWING NUMBER	REVISION
		9630-50-RCV-490	05