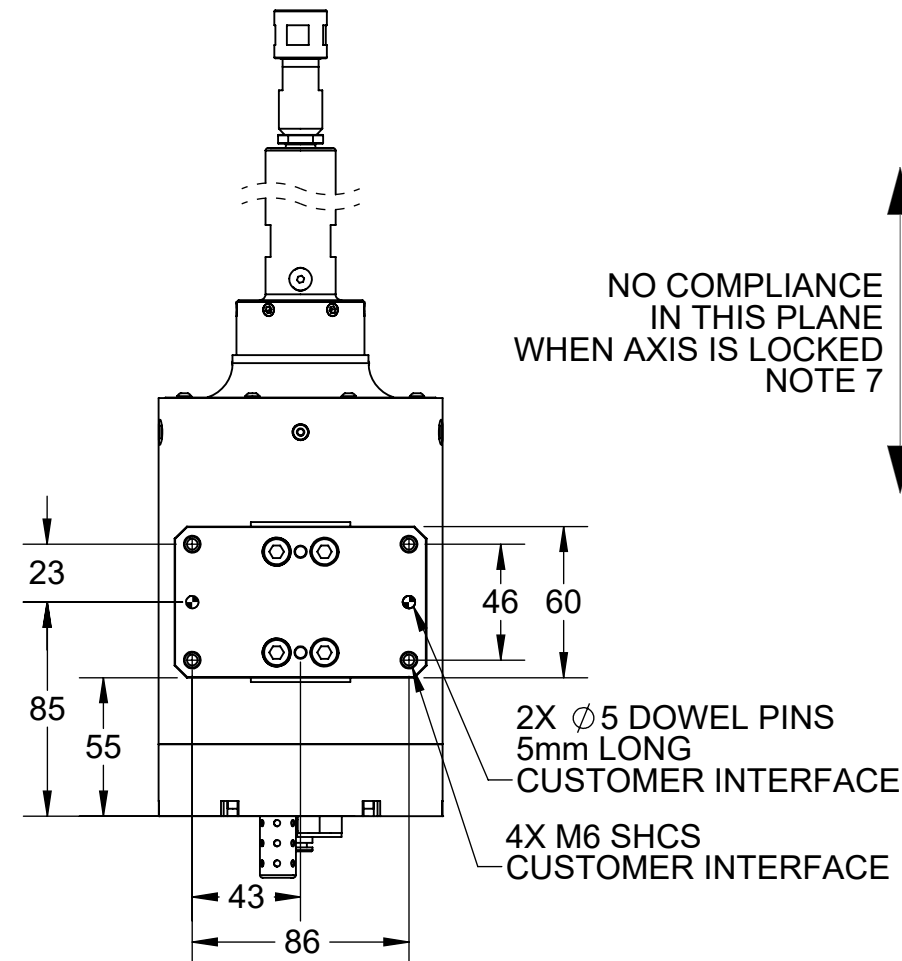
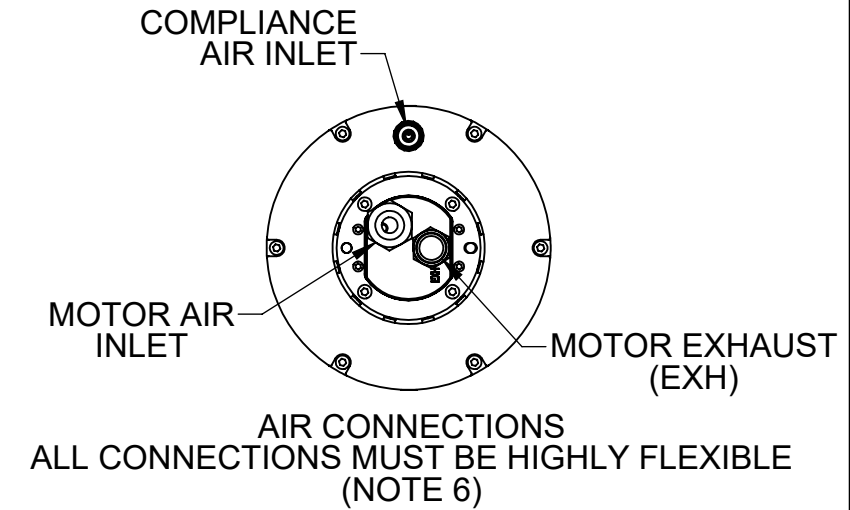
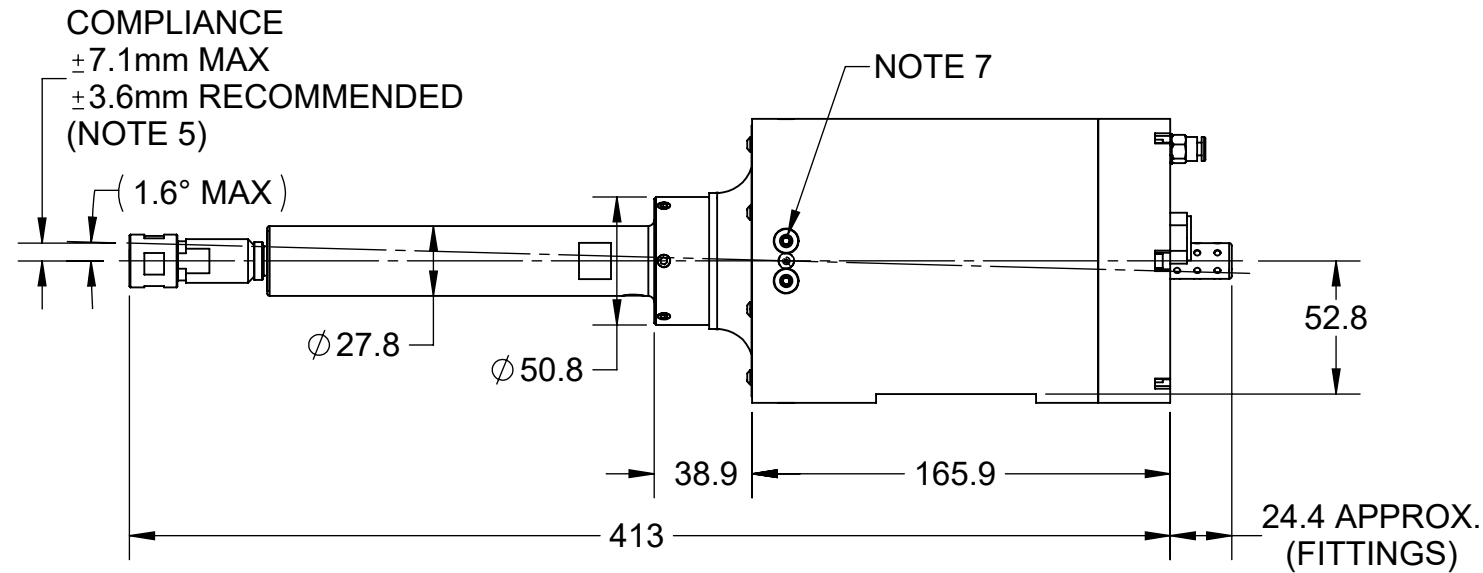
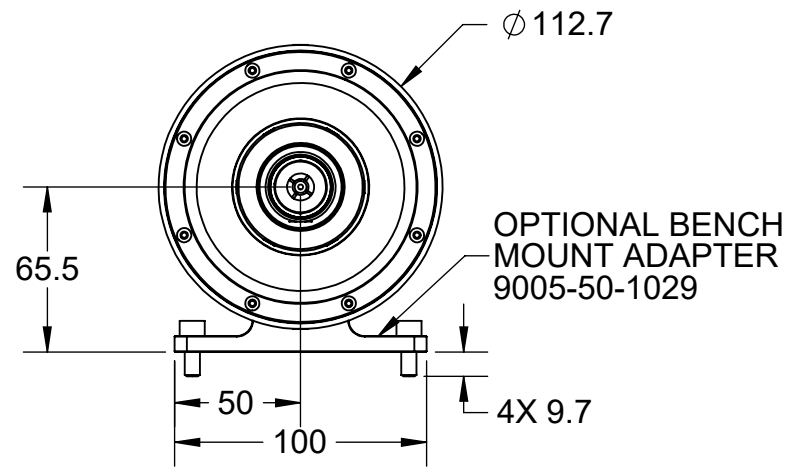


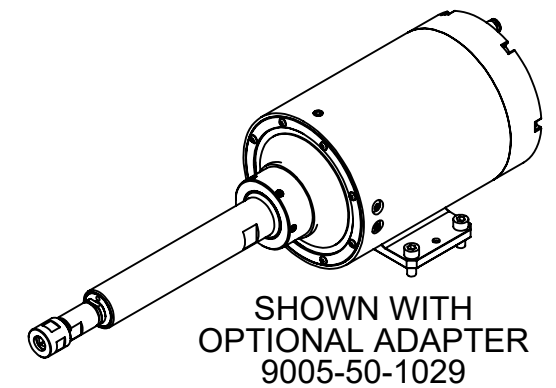
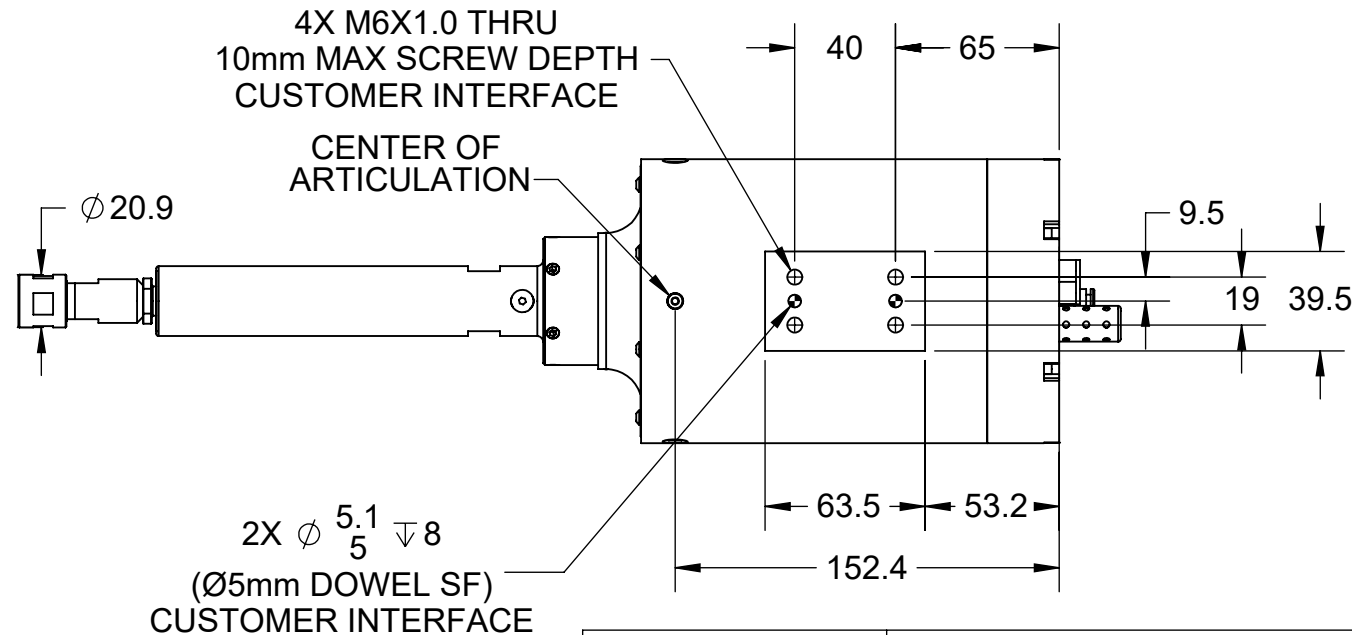
Notes:

1. 390 WATT, 5600 RPM FREE SPEED, LUBRICATED AIR MOTOR, 2600 RPM (APPROXIMATE) WORKING SPEED.
2. AIR CONSUMPTION 19 CFM [9 L/S] (APPROXIMATE, MAX).
3. MOTOR AIR QUALITY: 90PSI [6.2 BAR], DRY, FILTERED 5 MICRON OR BETTER, LUBRICATED AT 3-4 DROPS/MIN.
4. WEIGHT 9.75 lb [4.42 kg] (APPROXIMATE)
5. COMPLIANCE FORCE (APPROXIMATE) 2-15.75lb [9.4-70N], 15-60 PSI [1.0-4.1 BAR]
6. COMPLIANCE AIR PORT IS FITTED WITH 5/32" [4mm] PUSH TO CONNECT TUBE FITTINGS. THE MOTOR SUPPLY AND EXHAUST PORTS ARE 1/4"NPT. AN EXHAUST MUFFLER IS INSTALLED & THE UNIT IS SUPPLIED WITH A 1/4"NPT TO G1/4 ADAPTER FITTING FOR METRIC INSTALLATIONS.
7. FOR SINGLE AXIS ARTICULATION, REPLACE (QTY 4) M5 SBHCS WITH THE SUPPLIED M4X0.7 X 20mm LONG SBHCS. APPLY LOCTITE 222 OR SIMILAR THREAD LOCKER AND TORQUE TO 15IN-LBS.

REV.	DESCRIPTION	INITIATOR	DATE
02	ECO 18383; SHT 1, Ø5MM DOWEL UPDATED TO ∇8. SHT 2, REMOVED ITEM NO 20 FROM TABLE. UPDATED DRAWING FORMAT.	LJH	10/21/19

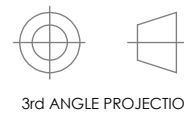


NO COMPLIANCE
IN THIS PLANE
WHEN AXIS IS LOCKED
NOTE 7



NOTES: UNLESS OTHERWISE SPECIFIED.

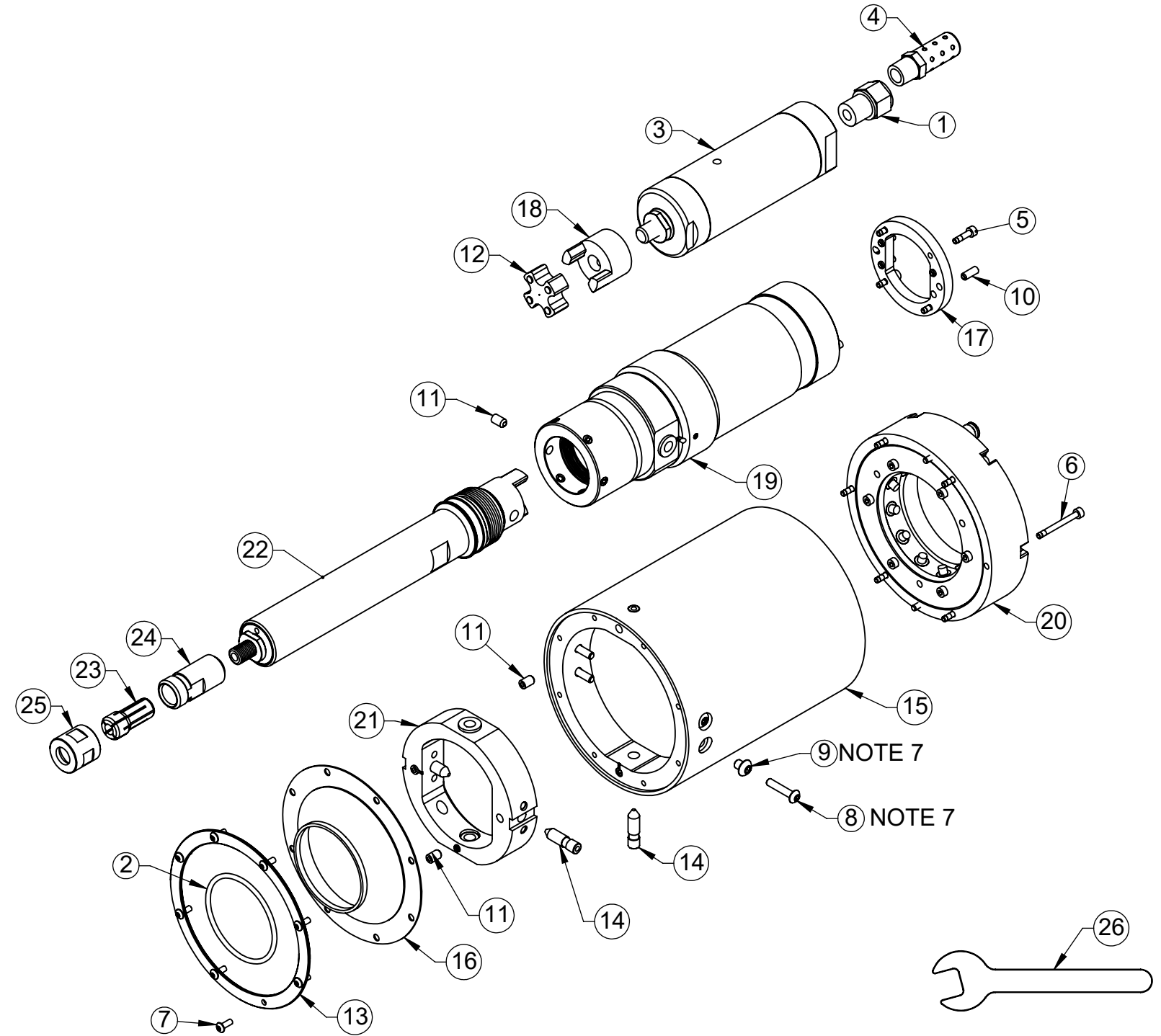
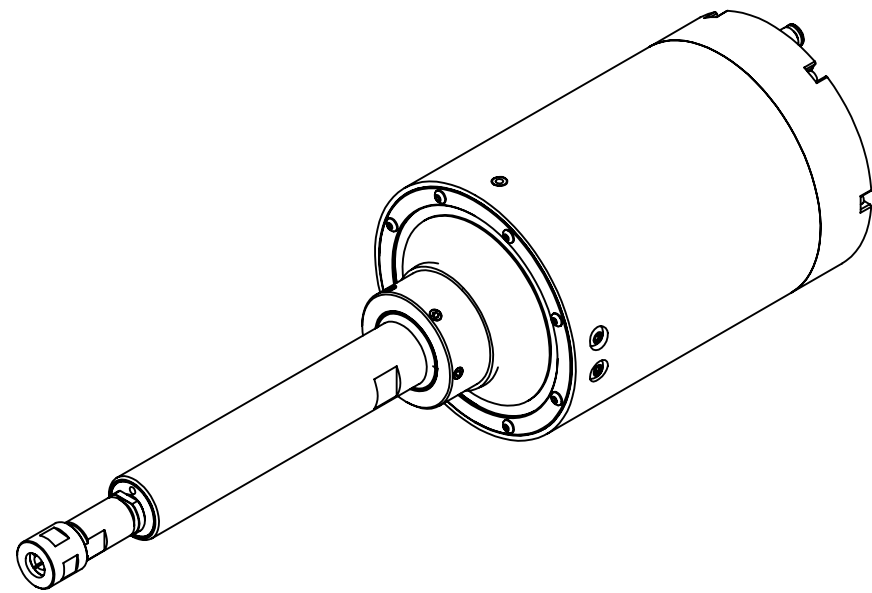
DO NOT SCALE DRAWING. ALL DIMENSIONS ARE IN MILLIMETERS.



1031 Goodworth Drive, Apex, NC 27539, USA
Tel: +1.919.772.0115 www.ati-ia.com
Fax: +1.919.772.8259 ISO 9001 Registered Company

PROPERTY OF ATI INDUSTRIAL AUTOMATION, INC. NOT TO BE REPRODUCED IN ANY MANNER EXCEPT ON ORDER OR WITH PRIOR WRITTEN AUTHORIZATION OF ATI.

DRAWN BY: B. Rose 7/17/2018		TITLE	
CHECKED BY: D. Bohle - 12/31/2018		RCV-390 Deburring Tool Drawing	
PROJECT # 180507-2	SHEET 1 OF 2	SCALE 1:3	REVISION 02
SIZE B	DRAWING NUMBER 9630-50-RCV-390		

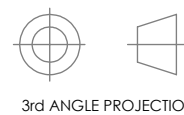


*9150-RCV-390 is provided with a 1/4" Collet.
 *9150-RCV-390-E is provided with both 6mm and 8mm Collets.

ITEM NO.	PART NUMBER	DESCRIPTION
15	3700-50-9019	Main Housing, RCV-390. Orange
	3700-50-9045	Main Housing, RCV-390, Black
23*	9150-ACT-C-84911163	1/4" DA-200 Double Angle Collet
	9150-ACT-C-DA200-6MM	6mm DA-200 Double Angle Collet
	9150-ACT-C-DA200-8MM	8mm DA-200 Double Angle Collet
26	9150-ACT-T-841015MM	ACT-390 15mm Spanner Wrench
	9150-ACT-T-841056IN	ACT-390 10ga, 9/16" Spanner Wrench
	9150-ACT-T-841075IN	ACT-390 10ga, 3/4" Spanner Wrench

NOTES: UNLESS OTHERWISE SPECIFIED.

DO NOT SCALE DRAWING. ALL DIMENSIONS ARE IN MILLIMETERS.



3rd ANGLE PROJECTION



1031 Goodworth Drive, Apex, NC 27539, USA
 Tel: +1.919.772.0115 www.ati-ia.com
 Fax: +1.919.772.8259 ISO 9001 Registered Company

PROPERTY OF ATI INDUSTRIAL AUTOMATION, INC. NOT TO BE REPRODUCED IN ANY MANNER EXCEPT ON ORDER OR WITH PRIOR WRITTEN AUTHORIZATION OF ATI.

DRAWN BY: B. Rose 7/17/2018		TITLE		
CHECKED BY: D. Bohle - 12/31/2018		RCV-390 Deburring Tool Drawing		
PROJECT # 180507-2	SHEET 2 OF 2	SCALE	SIZE	DRAWING NUMBER
		1:3	B	9630-50-RCV-390
				REVISION
				02