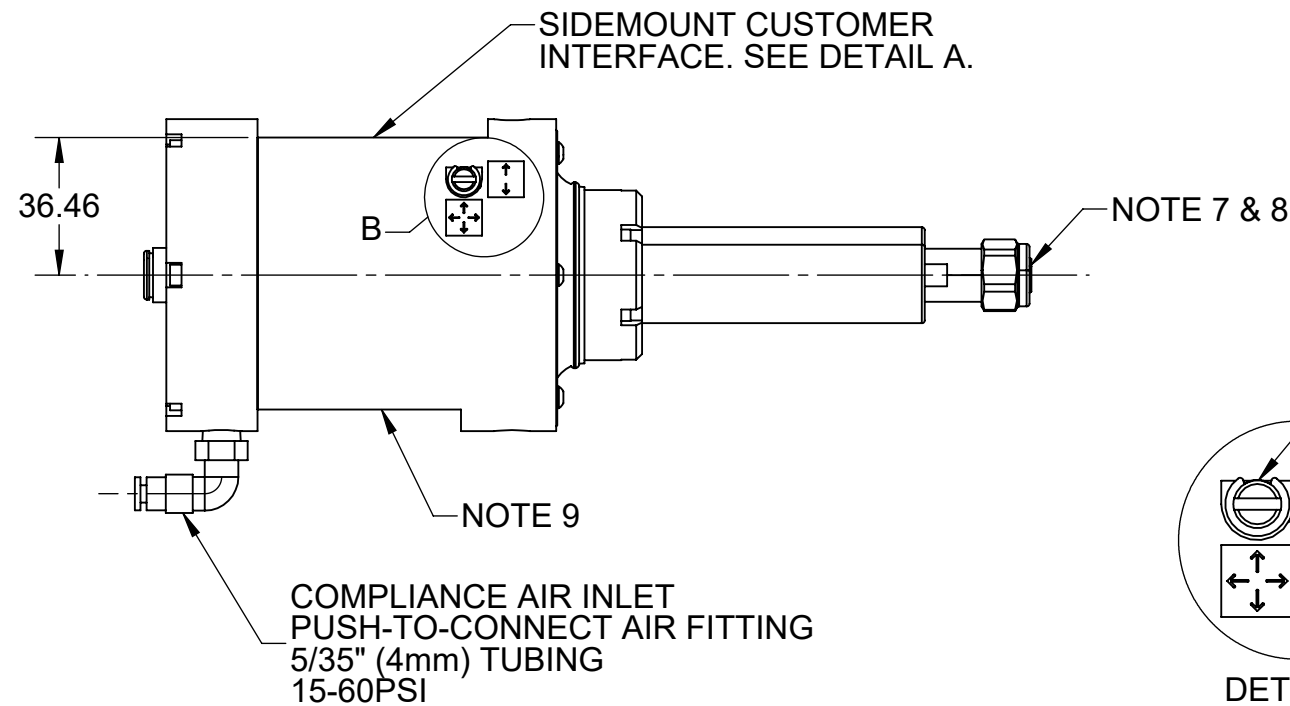
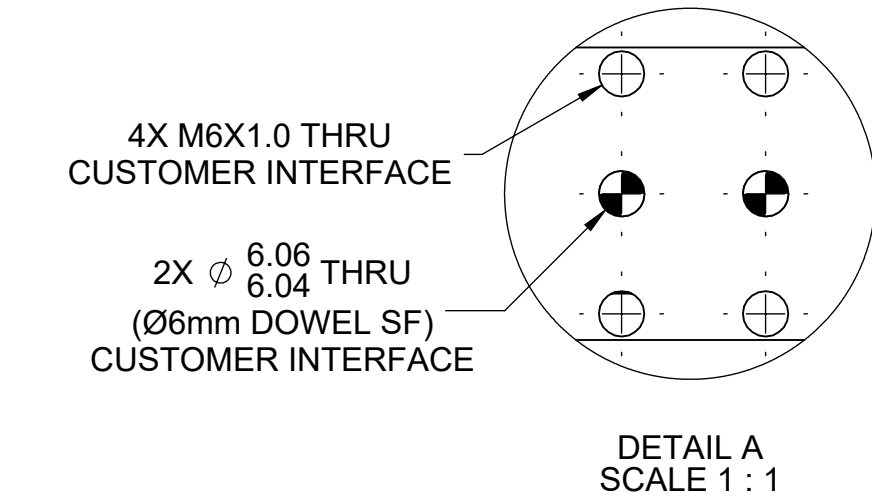
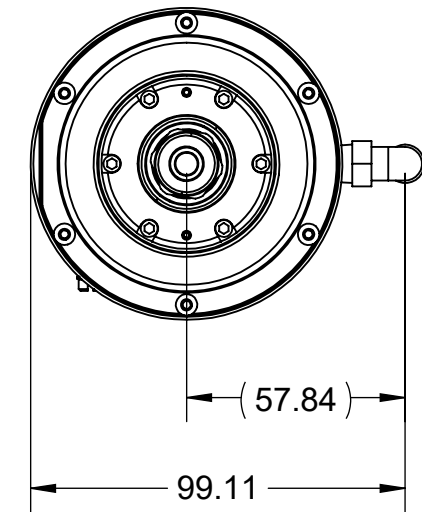
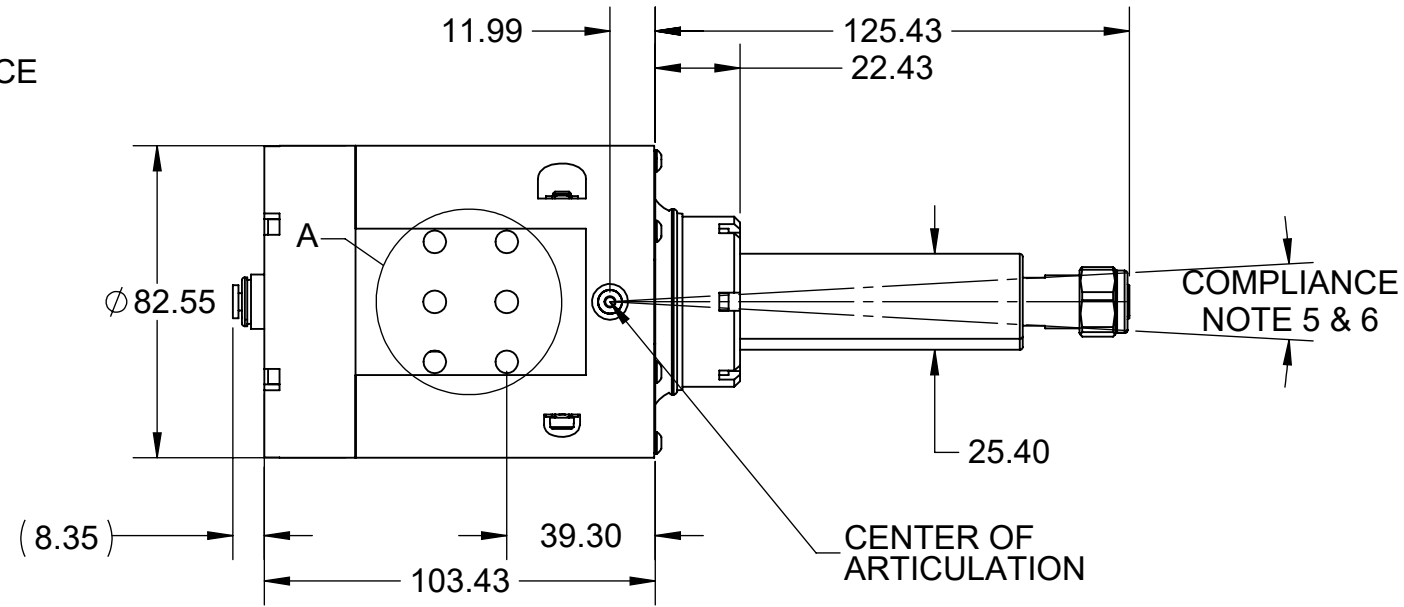
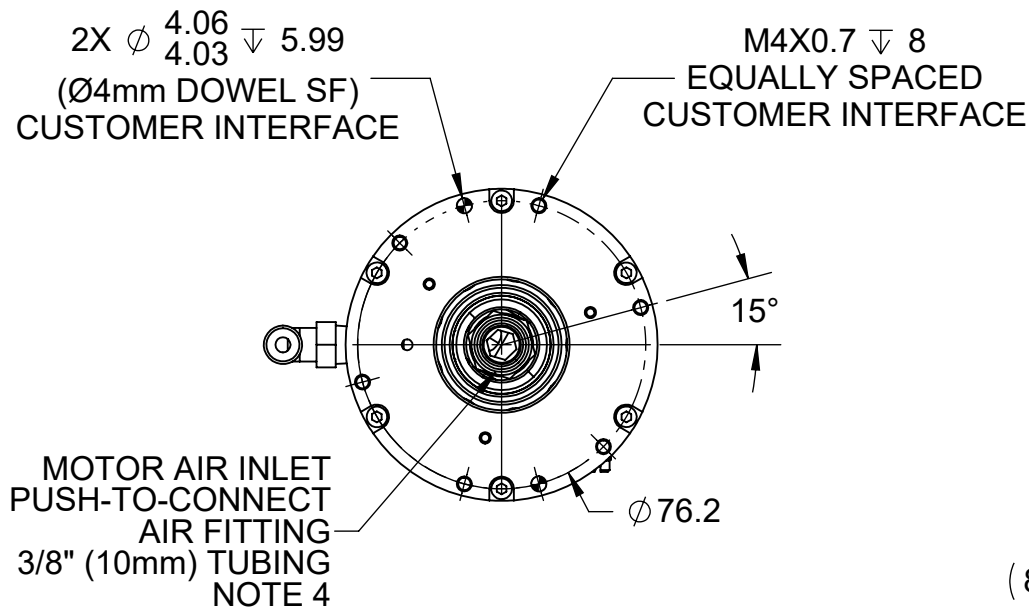
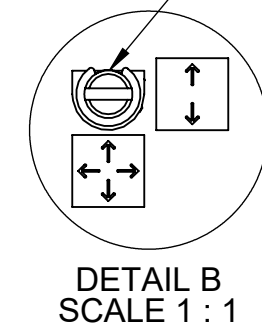


REV.	DESCRIPTION	INITIATOR	DATE
05	ECO 20442: UPDATED TO REFLECT NEW OUTER GIMBAL RING ASSEMBLY.	REH	2/7/2022



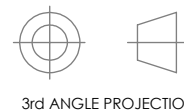
SINGLE AXIS COMPLIANCE SHOWN
SLOT PARALLEL TO SPINDLE; SINGLE
AXIS LOCKED OUT
SLOT PERPENDICULAR TO SPINDLE; 360°
COMPLIANCE



- NOTES:
- 250W VANE MOTOR, 40,000RPM IDLE SPEED, 20,000RPM WORKING SPEED
 - WEIGHT: 3.82LBS. [1.73kg]
 - AIR CONSUMPTION: 90PSI [6.2 BAR]; 15CFM [7.1 L/S] - 30CFM [14.2 L/S]
 - MOTOR AIR QUALITY: CLEAN, FILTERED AIR [5 MICRON OR BETTER], LUBRICATED AT 1-2 DROPS PER MINUTE
 - COMPLIANCE TRAVEL: $\pm 3^\circ$ (APPROX. $\pm 0.28"$ [7.1mm]) AT COLLET.
 - COMPLIANCE FORCE: APPROX. 4.0LBF. - 13.0LBF. (18N - 57.8N)
 - 9150-RCV-250 SUPPLIED WITH 1/4" COLLET
 - 9150-RCV-250-E SUPPLIED WITH 6MM & 8MM COLLET.
 - SECONDARY MOUNTING SURFACE RESERVED FOR FUTURE ACCESSORIES TO RCV-250. CONTACT ATI FOR MORE INFORMATION.

NOTES: UNLESS OTHERWISE SPECIFIED.

DO NOT SCALE DRAWING. ALL DIMENSIONS ARE IN MILLIMETERS.

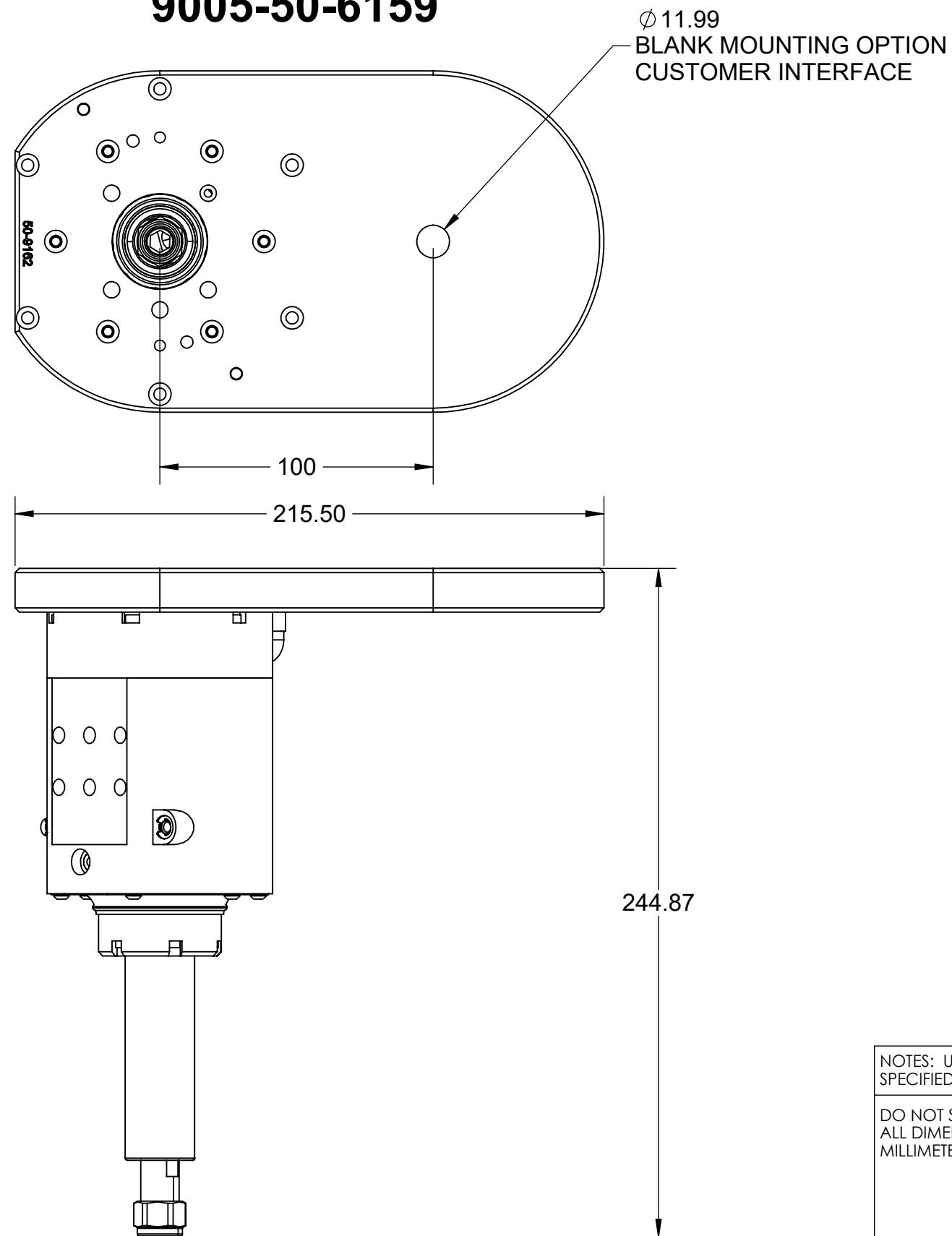


1031 Goodworth Drive, Apex, NC 27539, USA
Tel: +1.919.772.0115 www.ati-ia.com
Fax: +1.919.772.8259 ISO 9001 Registered Company

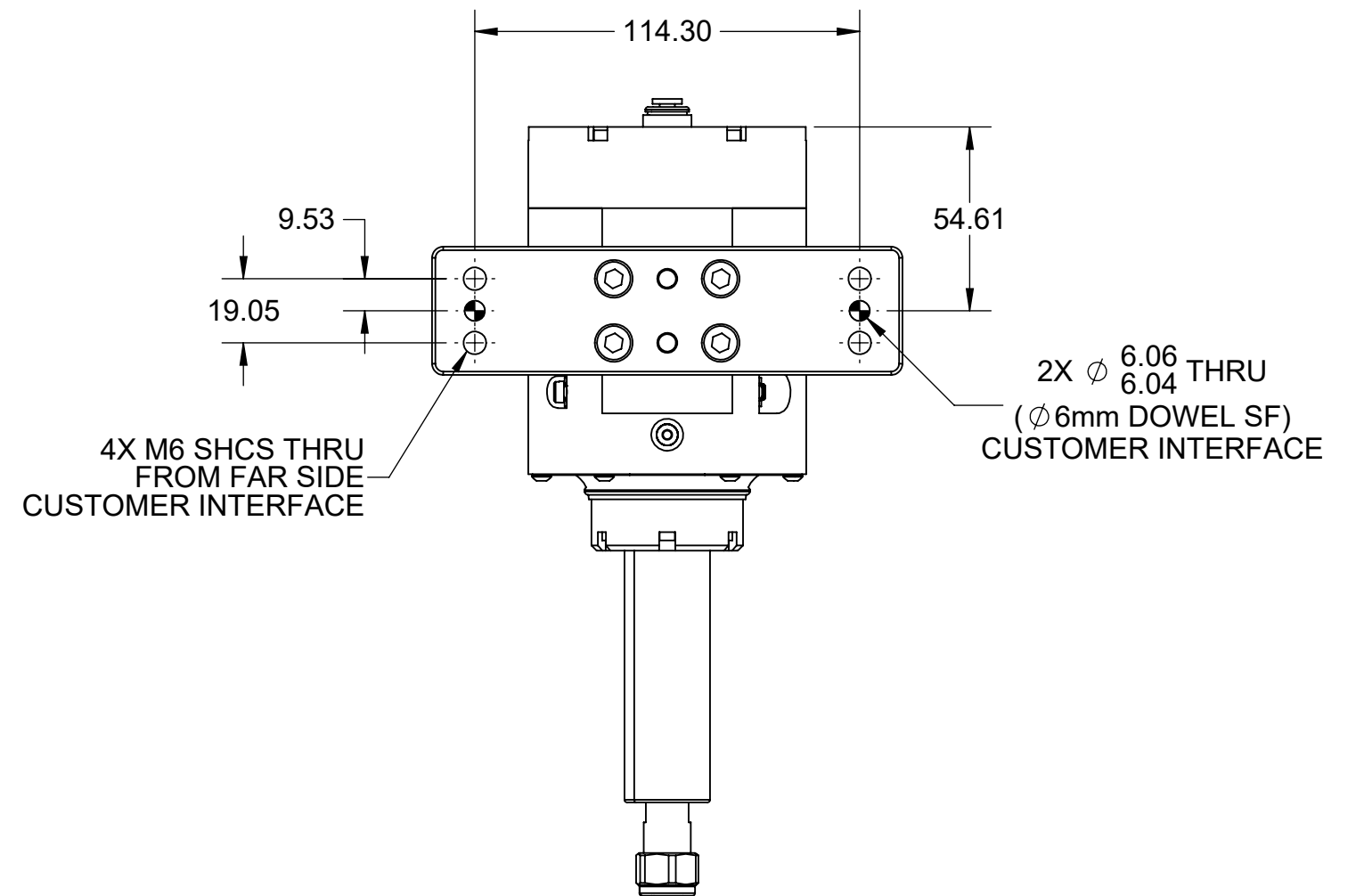
PROPERTY OF ATI INDUSTRIAL AUTOMATION, INC. NOT TO BE REPRODUCED IN ANY MANNER EXCEPT ON ORDER OR WITH PRIOR WRITTEN AUTHORIZATION OF ATI.

DRAWN BY: G.Wu 04/22/2020		TITLE	
CHECKED BY: B.Rose 08/20/2020		RCV-250 Customer Drawing	
SCALE	SIZE	DRAWING NUMBER	REVISION
1:2	B	9630-50-RCV-250	05
PROJECT # 191022-1		SHEET 1 OF 3	

OFFSET AXIAL MOUNT ADAPTER 9005-50-6159

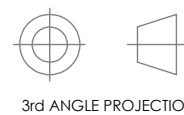


OPTIONAL BENCH MOUNT ADAPTER 9005-50-6091



NOTES: UNLESS OTHERWISE SPECIFIED.

DO NOT SCALE DRAWING.
ALL DIMENSIONS ARE IN
MILLIMETERS.



1031 Goodworth Drive, Apex, NC 27539, USA
Tel: +1.919.772.0115 www.ati-ia.com
Fax: +1.919.772.8259 ISO 9001 Registered Company

PROPERTY OF ATI INDUSTRIAL AUTOMATION, INC. NOT TO BE REPRODUCED IN ANY MANNER EXCEPT ON ORDER OR WITH PRIOR WRITTEN AUTHORIZATION OF ATI.

DRAWN BY: G.Wu 04/22/2020

CHECKED BY: B.Rose 08/20/2020

TITLE

RCV-250 Customer Drawing

PROJECT # 191022-1 SHEET 2 OF 3

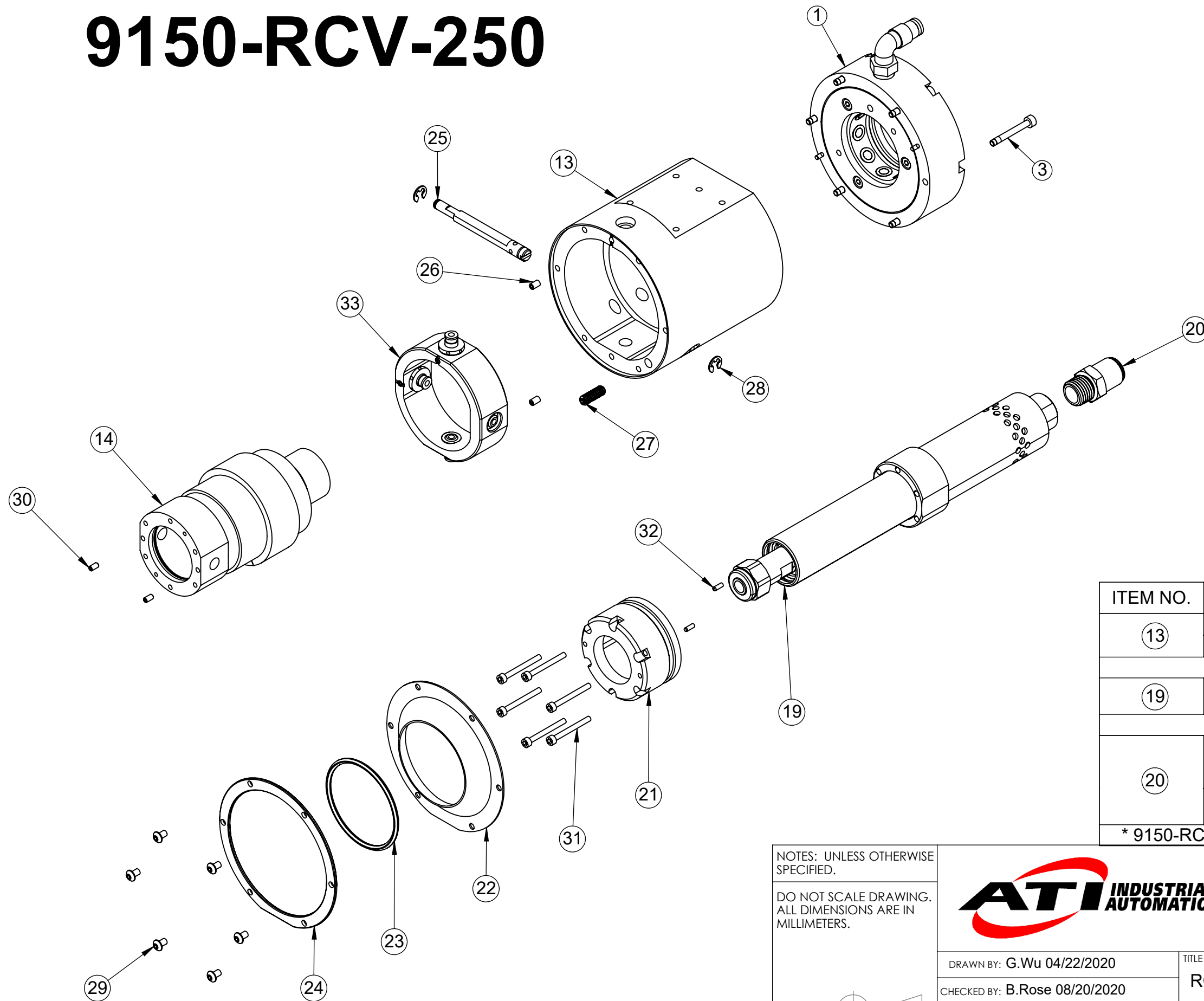
SCALE
1:2

SIZE
B

DRAWING NUMBER
9630-50-RCV-250

REVISION
05

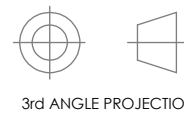
9150-RCV-250



ITEM NO.	PART NUMBER	DESCRIPTION
13	3700-50-9177	MAIN HOUSING, RCV-250, ORANGE
	3700-50-9208	MAIN HOUSING, RCV-250, BLACK
19	3490-0001073-01*	VANE MOTOR, 250 WATTS, 40,000 RPM
20	3405-1210027-01	FITTING, STRAIGHT, 3/8" TUBE, 1/4" NPT MALE, 16mm EXT. HEX, NICKEL PLATED BRASS
	3405-1230021-01	FITTING, STRAIGHT, 1/4NPT X 10mm TUBE, NICKEL PLATED BRASS
* 9150-RCV-250-E SUPPLIED WITH 6mm COLLET & 8mm COLLET		

NOTES: UNLESS OTHERWISE SPECIFIED.

DO NOT SCALE DRAWING. ALL DIMENSIONS ARE IN MILLIMETERS.



3rd ANGLE PROJECTION



1031 Goodworth Drive, Apex, NC 27539, USA
 Tel: +1.919.772.0115 www.ati-ia.com
 Fax: +1.919.772.8259 ISO 9001 Registered Company

PROPERTY OF ATI INDUSTRIAL AUTOMATION, INC. NOT TO BE REPRODUCED IN ANY MANNER EXCEPT ON ORDER OR WITH PRIOR WRITTEN AUTHORIZATION OF ATI.

DRAWN BY: G.Wu 04/22/2020		TITLE		
CHECKED BY: B.Rose 08/20/2020		RCV-250 Customer Drawing		
PROJECT # 191022-1	SHEET 3 OF 3	SCALE 1:2	SIZE B	DRAWING NUMBER 9630-50-RCV-250
				REVISION 05