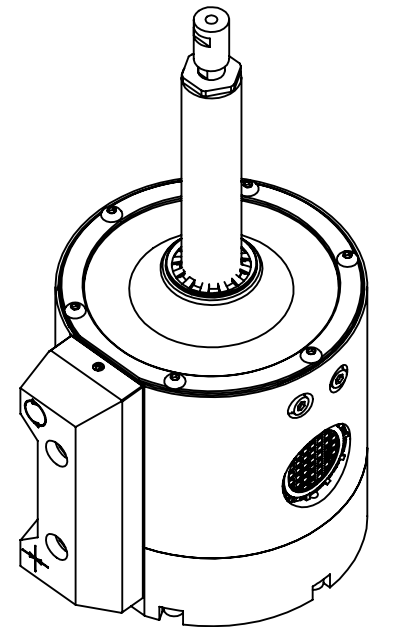
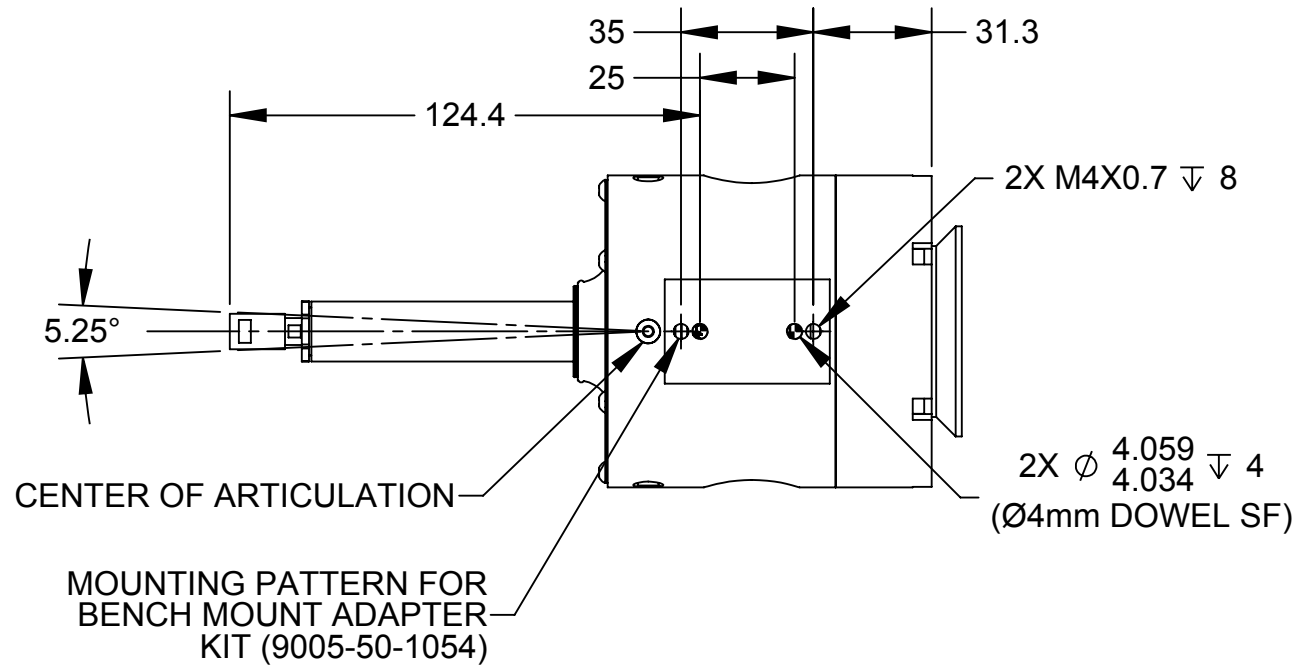
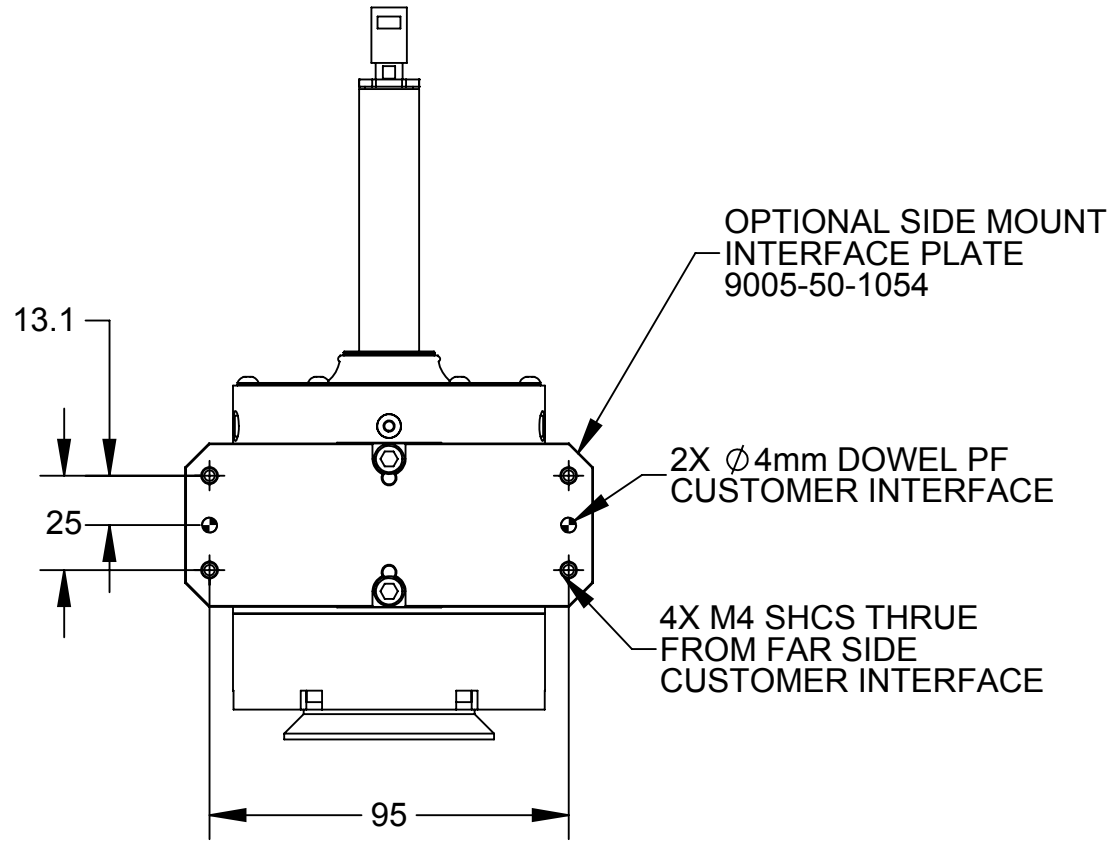
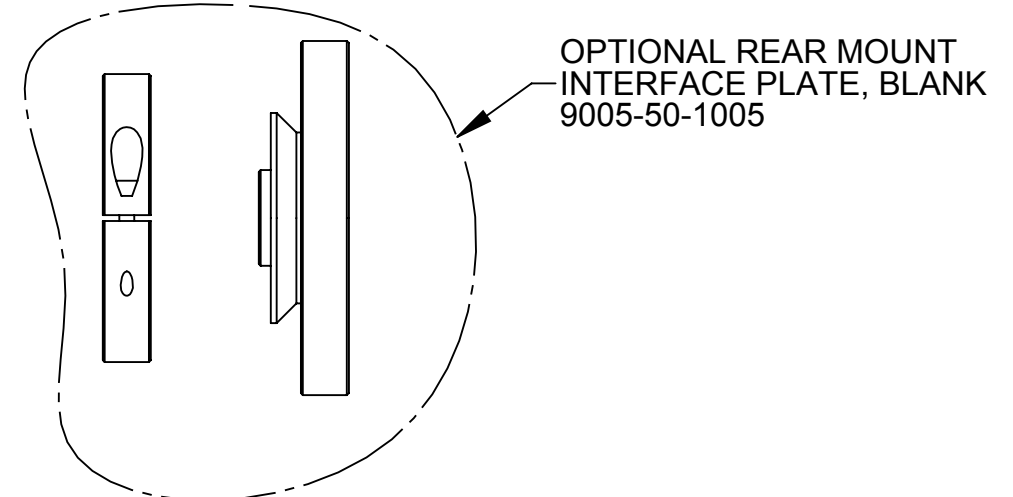
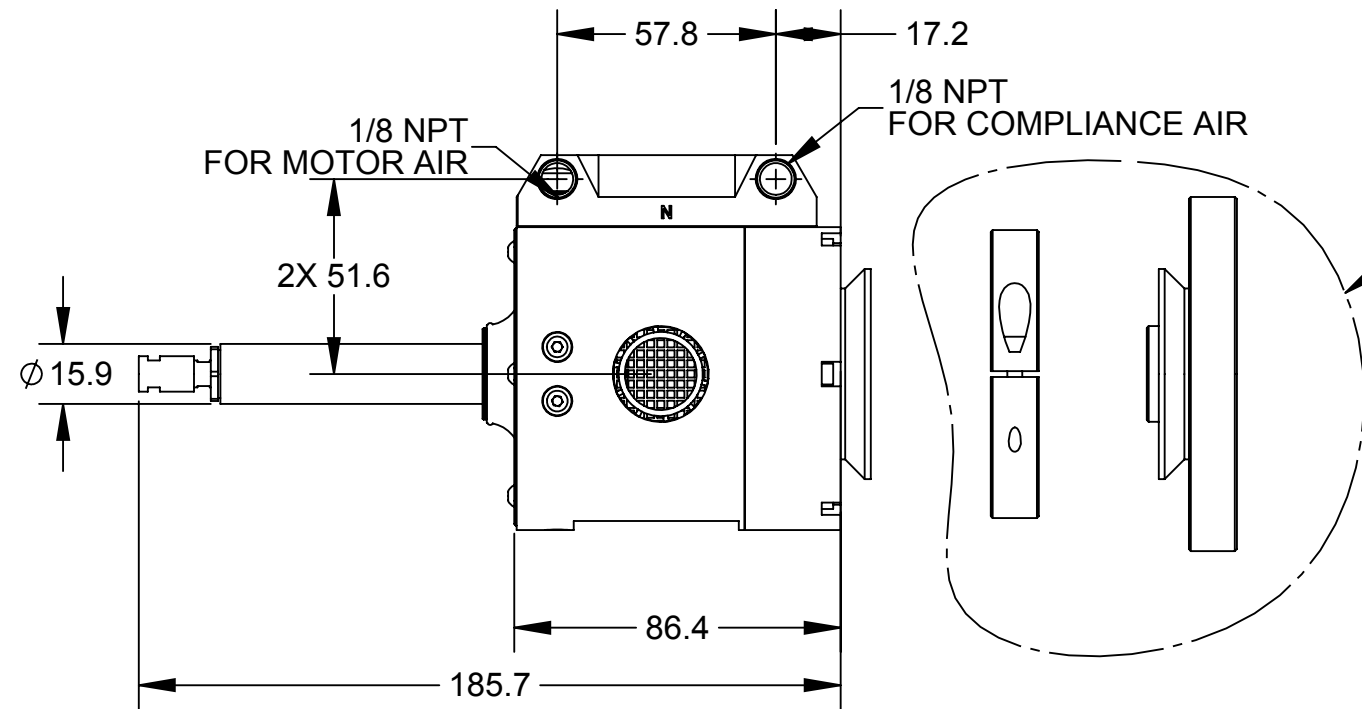
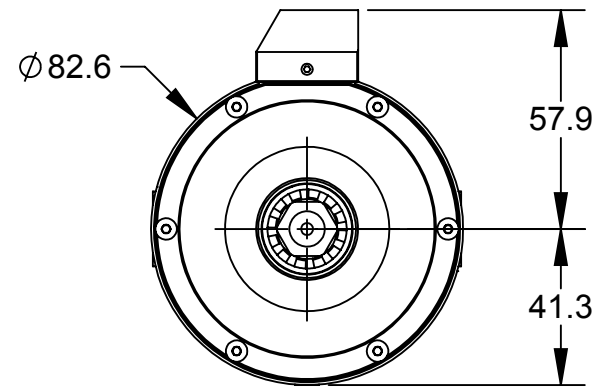


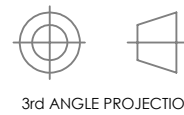
REV.	DESCRIPTION	INITIATOR	DATE
02	DRAWING RELEASE	GLW	5/1/2020



- Notes:
- 150 WATT 65000 RPM IDLE SPEED, TURBINE MOTOR
 - AIR CONSUMPTION 3CFM - 8CFM (1.4L/s - 3.8L/s)
 - MOTOR AIR QUALITY: CLEAN, DRY, FILTERED (FILER ELEMENTS RATED 5 MICRON OR BETTER), NON-LUBRICATED AIR.
 - WEIGHT: 2.30LBS (1.04KG)
 - COMPLIANCE FORCE: 0.2LBF - 1.3LBF (0.89N - 5.78N)
 - RADIAL COMPLIANCE TRAVEL: 5.25 DEG (0.25", 6.25mm)

NOTES: UNLESS OTHERWISE SPECIFIED.

DO NOT SCALE DRAWING. ALL DIMENSIONS ARE IN MILLIMETERS.

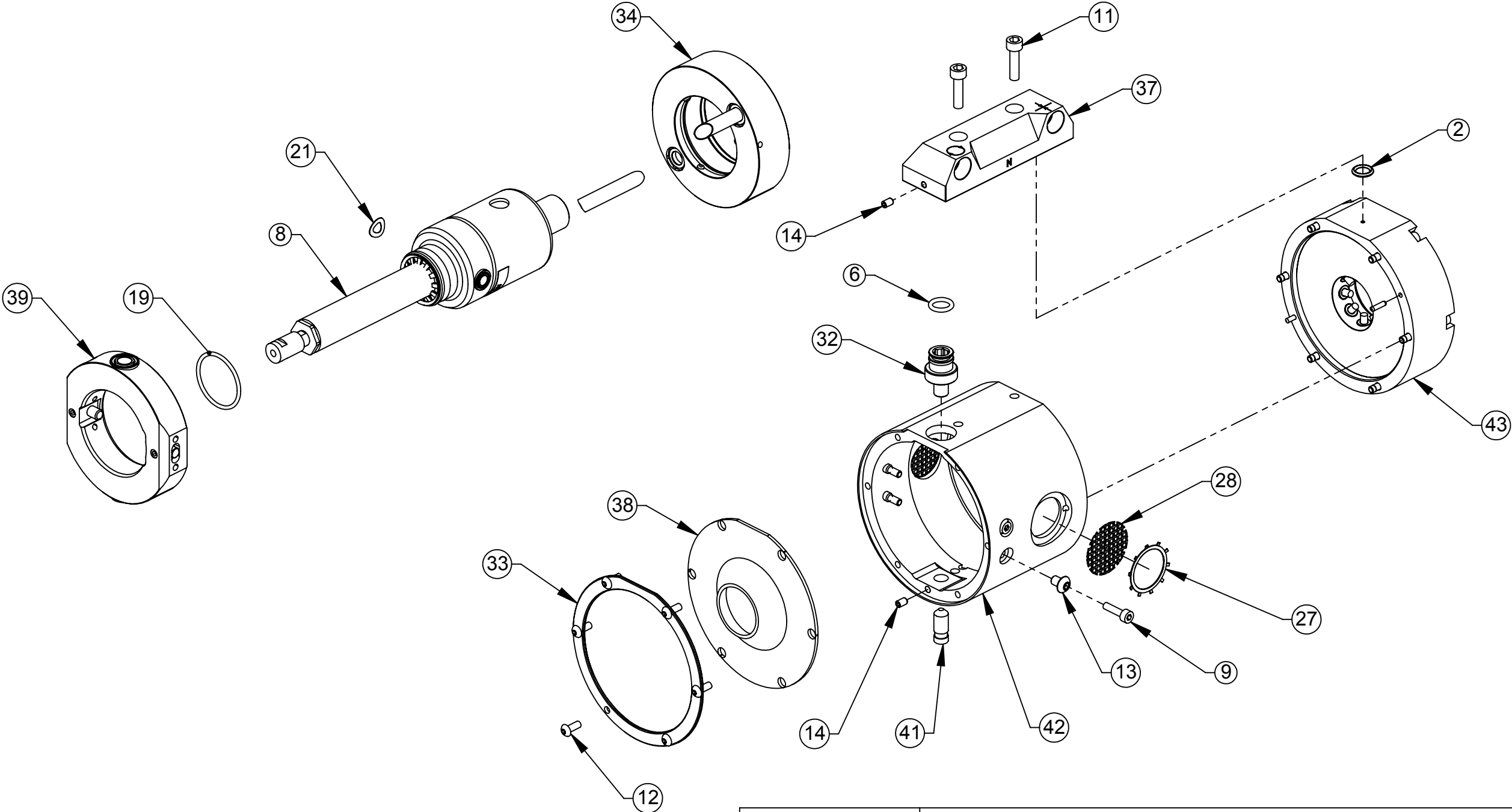


1031 Goodworth Drive, Apex, NC 27539, USA
 Tel: +1.919.772.0115 www.ati-ia.com
 Fax: +1.919.772.8259 ISO 9001 Registered Company

PROPERTY OF ATI INDUSTRIAL AUTOMATION, INC. NOT TO BE REPRODUCED IN ANY MANNER EXCEPT ON ORDER OR WITH PRIOR WRITTEN AUTHORIZATION OF ATI.

DRAWN BY: G.Wu 08/13/2019		TITLE	
CHECKED BY: D.Bohle 04/03/2020		Single-Axis & Radially Compliant 151 Watt Deburring Tool with Turbine Motor	
PROJECT # 190726-2	SHEET 1 OF 2	SCALE 1:2	SIZE B
		DRAWING NUMBER 9630-50-RCT-151	REVISION 02

9150-RCT-151



NOTES: UNLESS OTHERWISE SPECIFIED.

DO NOT SCALE DRAWING. ALL DIMENSIONS ARE IN INCHES.



1031 Goodworth Drive, Apex, NC 27539, USA
 Tel: +1.919.772.0115 www.ati-ia.com
 Fax: +1.919.772.8259 ISO 9001 Registered Company

PROPERTY OF ATI INDUSTRIAL AUTOMATION, INC. NOT TO BE REPRODUCED IN ANY MANNER EXCEPT ON ORDER OR WITH PRIOR WRITTEN AUTHORIZATION OF ATI.

DRAWN BY: G.Wu 08/13/2019		TITLE	
CHECKED BY: D.Bohle 04/03/2020		Single-Axis & Radially Compliant 151 Watt Deburring Tool with Turbine Motor	
PROJECT #	190726-2	SCALE	1:2
SHEET	2 OF 2	SIZE	B
		DRAWING NUMBER	9630-50-RCT-151
			REVISION
			02