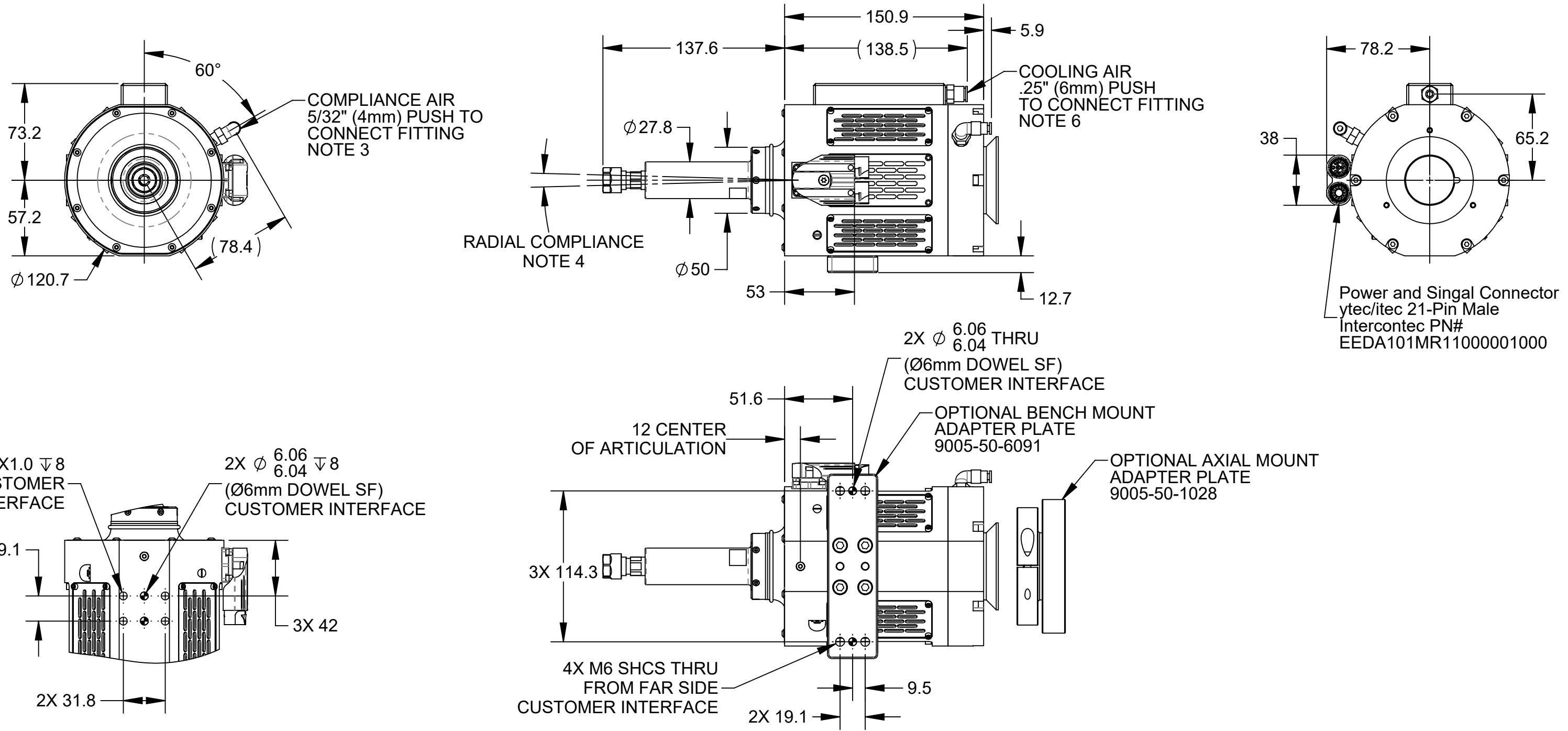


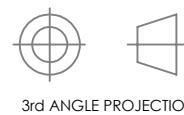
| REV. | DESCRIPTION | INITIATOR | DATE |
|------|---|-----------|----------|
| 04 | ECO 21516; RPM, WEIGHT AND COMPLIANCE FORCE VALUES HAVE BEEN UPDATED. | LJH | 8/1/2023 |



- NOTES:
- 710 WATT, 15000 RPM MAX SPEED.
 - WEIGHT 11.8 LB [5.4 kg] (APPROXIMATE).
 - COMPLIANCE FORCE (APPROXIMATE), 5.4 LBF- 18.8LBF @ 15-60 PSI (24-84N).
 - RADIAL COMPLIANCE TRAVEL AT COLLET = MAX \pm 1.8° (APPROXIMATELY .18", 4.6mm).
 - FULL RADIAL COMPLIANCE MOTION WHEN LOCKOUT ROD IS UNLOCKED. SINGLE AXIS ARTICULATION WHEN LOCKOUT ROD IS LOCKED.
 - COOLING AIR SUPPLY 30 PSI [2 BAR], CLEAN, DRY AIR.

NOTES: UNLESS OTHERWISE SPECIFIED.

DO NOT SCALE DRAWING. ALL DIMENSIONS ARE IN MILLIMETERS.

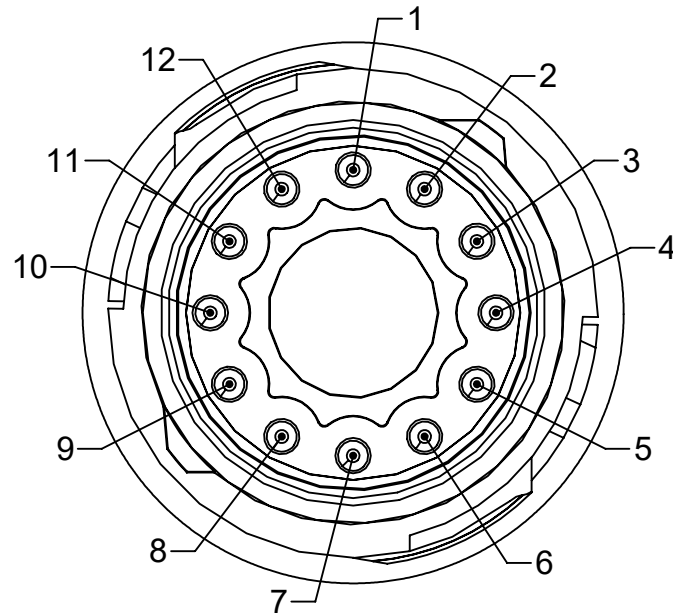
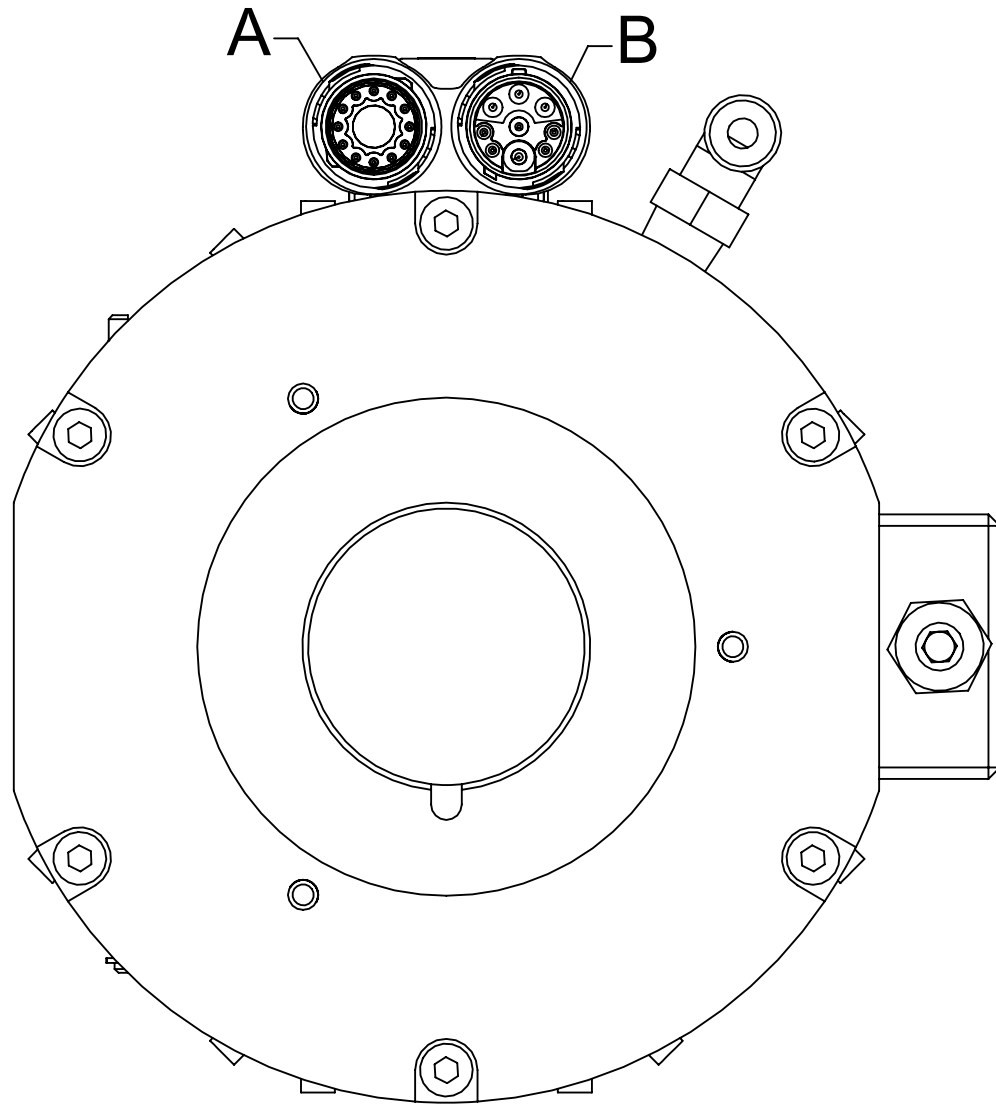


1031 Goodworth Drive, Apex, NC 27539, USA
Tel: +1.919.772.0115 www.ati-ia.com
Fax: +1.919.772.8259 ISO 9001 Registered Company

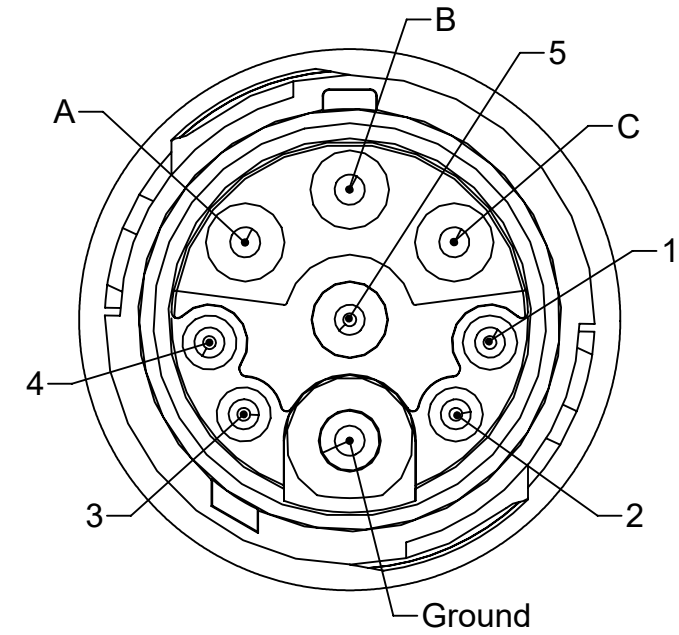
PROPERTY OF ATI INDUSTRIAL AUTOMATION, INC. NOT TO BE REPRODUCED IN ANY MANNER EXCEPT ON ORDER OR WITH PRIOR WRITTEN AUTHORIZATION OF ATI.

| | | | |
|--------------------------------|--------------|---|--------------------------------|
| DRAWN BY: D. Bohle 10/18/2019 | | TITLE | |
| CHECKED BY: B. Rose 10/21/2019 | | Radially Compliant Electric Deburring Tool Customer | |
| M. Newell 10/21/2019 | | Drawing, 710 Watts, 13000 rpm | |
| PROJECT # 190130-1 | SHEET 1 OF 4 | SCALE 1:2 | REVISION 04 |
| | | SIZE B | DRAWING NUMBER 9630-50-RCE-710 |

9150-RCE-710 (-E)



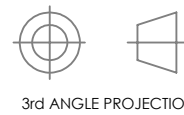
DETAIL A
SCALE 4 : 1



DETAIL B
SCALE 4 : 1

NOTES: UNLESS OTHERWISE SPECIFIED.

DO NOT SCALE DRAWING. ALL DIMENSIONS ARE IN MILLIMETERS.



3rd ANGLE PROJECTION



1031 Goodworth Drive, Apex, NC 27539, USA
Tel: +1.919.772.0115 www.ati-ia.com
Fax: +1.919.772.8259 ISO 9001 Registered Company

PROPERTY OF ATI INDUSTRIAL AUTOMATION, INC. NOT TO BE REPRODUCED IN ANY MANNER EXCEPT ON ORDER OR WITH PRIOR WRITTEN AUTHORIZATION OF ATI.

DRAWN BY: D. Bohle 10/18/2019

CHECKED BY: B. Rose 10/21/2019

M. Newell 10/21/2019

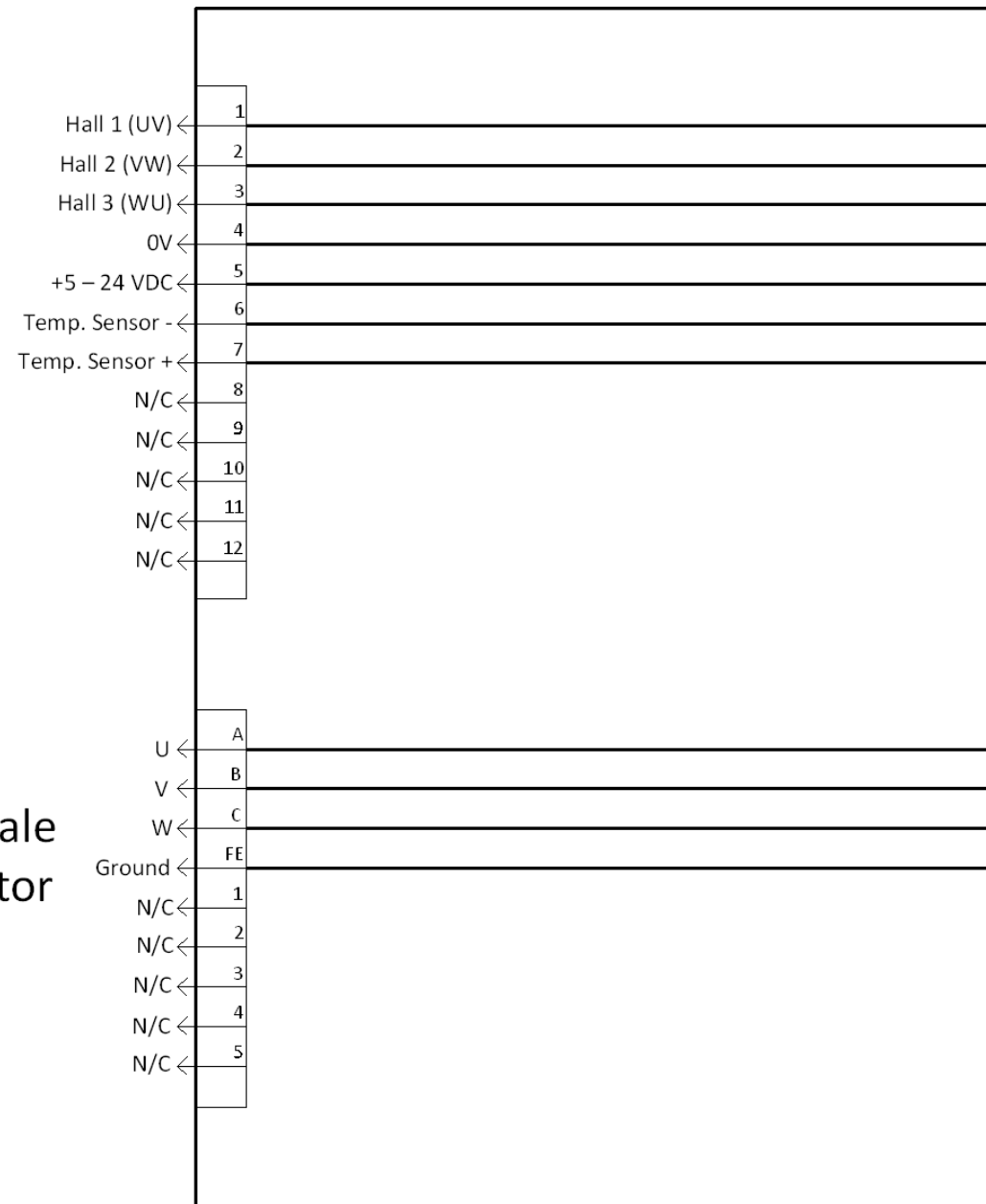
PROJECT # 190130-1 SHEET 2 OF 4

TITLE
Radially Compliant Electric Deburring Tool Customer
Drawing, 710 Watts, 13000 rpm

| SCALE | SIZE | DRAWING NUMBER | REVISION |
|-------|------|-----------------|----------|
| 1:5 | B | 9630-50-RCE-710 | 04 |

9150-RCE-710

12-Pin Male Connector



Motor

9-Pin Male Connector

NOTES: UNLESS OTHERWISE SPECIFIED.

DO NOT SCALE DRAWING. ALL DIMENSIONS ARE IN MILLIMETERS.



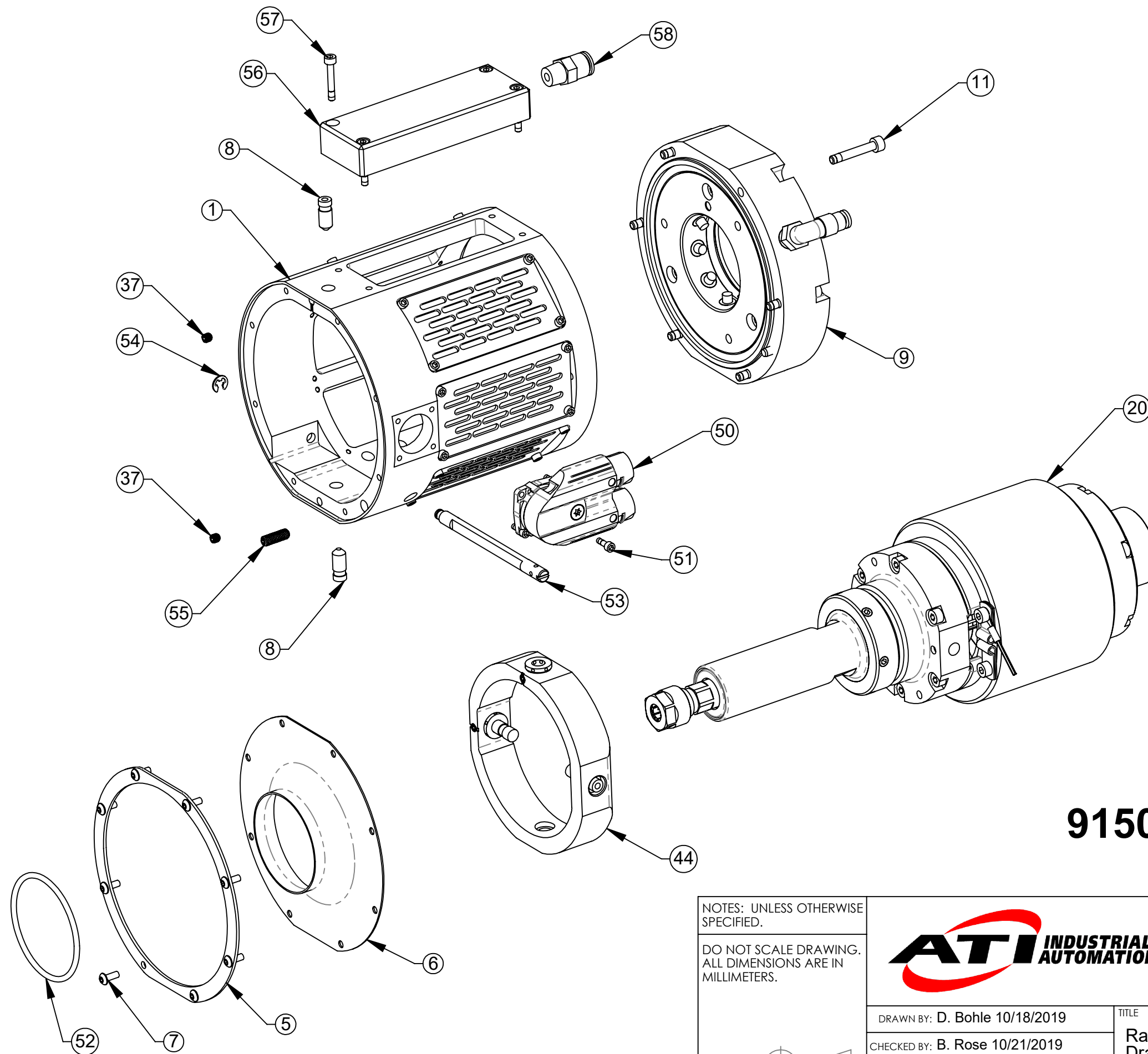
3rd ANGLE PROJECTION



1031 Goodworth Drive, Apex, NC 27539, USA
 Tel: +1.919.772.0115 www.ati-ia.com
 Fax: +1.919.772.8259 ISO 9001 Registered Company

PROPERTY OF ATI INDUSTRIAL AUTOMATION, INC. NOT TO BE REPRODUCED IN ANY MANNER EXCEPT ON ORDER OR WITH PRIOR WRITTEN AUTHORIZATION OF ATI.

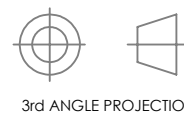
| | | | |
|--------------------------------|--------------|---|--------------------------------|
| DRAWN BY: D. Bohle 10/18/2019 | | TITLE | |
| CHECKED BY: B. Rose 10/21/2019 | | Radially Compliant Electric Deburring Tool Customer | |
| M. Newell 10/21/2019 | | Drawing, 710 Watts, 13000 rpm | |
| PROJECT # 190130-1 | SHEET 3 OF 4 | SCALE 1:5 | REVISION 04 |
| | | SIZE B | DRAWING NUMBER 9630-50-RCE-710 |



9150-RCE-710 (-E)

NOTES: UNLESS OTHERWISE SPECIFIED.

DO NOT SCALE DRAWING. ALL DIMENSIONS ARE IN MILLIMETERS.



1031 Goodworth Drive, Apex, NC 27539, USA
 Tel: +1.919.772.0115 www.ati-ia.com
 Fax: +1.919.772.8259 ISO 9001 Registered Company

PROPERTY OF ATI INDUSTRIAL AUTOMATION, INC. NOT TO BE REPRODUCED IN ANY MANNER EXCEPT ON ORDER OR WITH PRIOR WRITTEN AUTHORIZATION OF ATI.

| | | | |
|--------------------------------|--------------|---|--------------------------------|
| DRAWN BY: D. Bohle 10/18/2019 | | TITLE | |
| CHECKED BY: B. Rose 10/21/2019 | | Radially Compliant Electric Deburring Tool Customer | |
| M. Newell 10/21/2019 | | Drawing, 710 Watts, 13000 rpm | |
| PROJECT # 190130-1 | SHEET 4 OF 4 | SCALE 1:10 | REVISION 04 |
| | | SIZE B | DRAWING NUMBER 9630-50-RCE-710 |