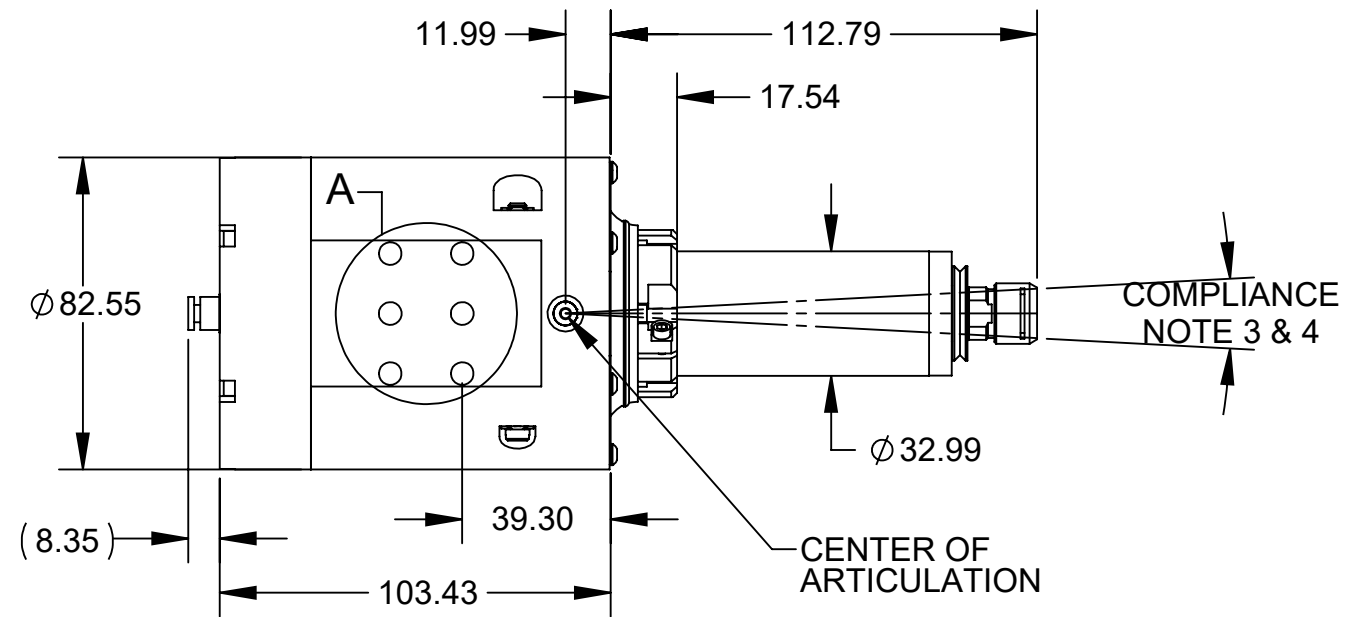
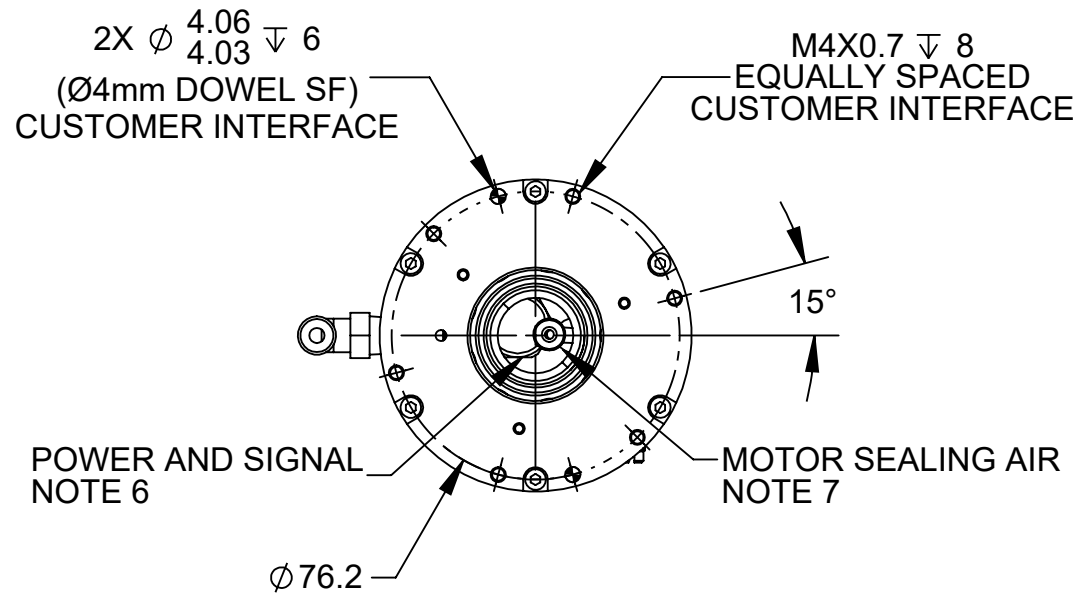
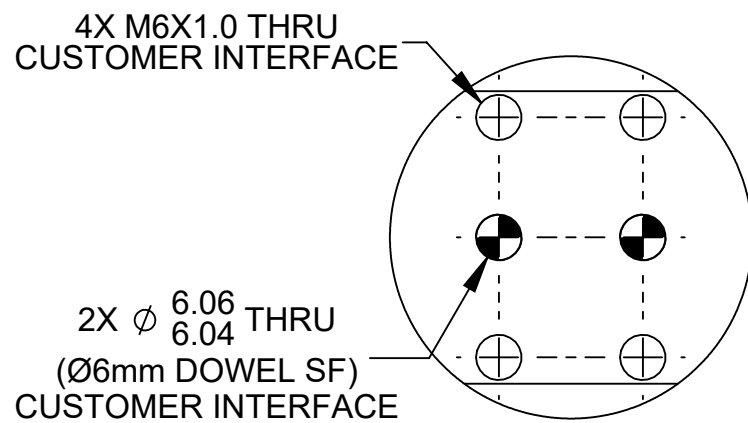
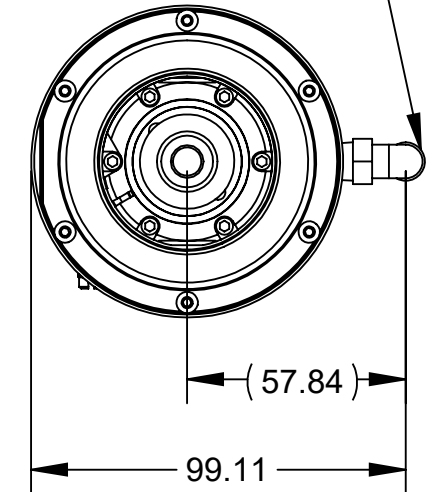


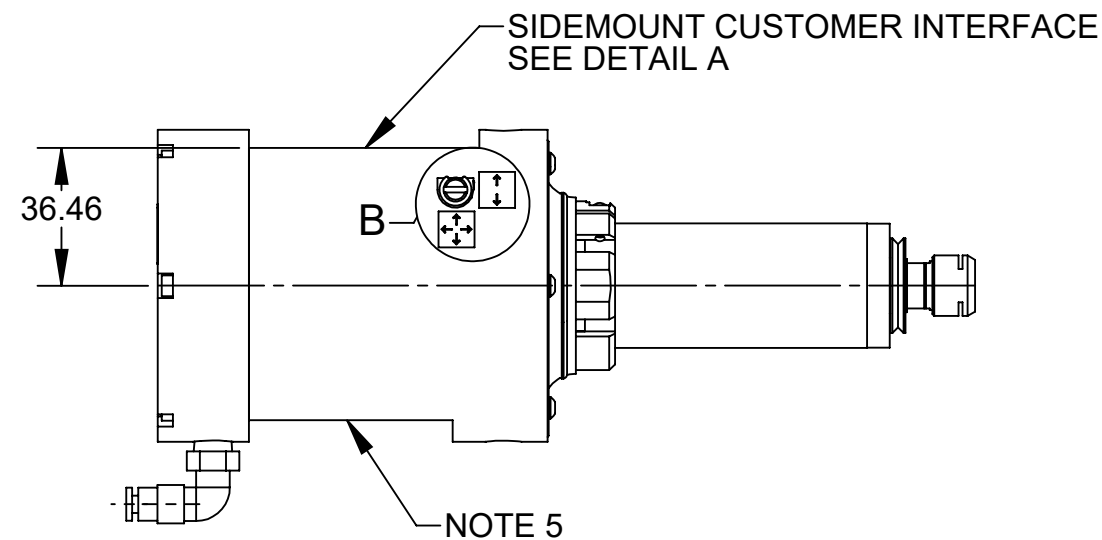
REV.	DESCRIPTION	INITIATOR	DATE
01	Initial Drawing	LLL	12/02/2021



COMPLIANCE AIR
5/32" (4mm) PUSH TO
CONNECT FITTING
NOTE 3

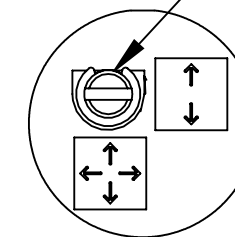


DETAIL A
SCALE 1 : 1



SINGLE AXIS COMPLIANCE SHOWN
SLOT PARALLEL TO SPINDLE; SINGLE
AXIS LOCKED OUT

SLOT PERPENDICULAR TO SPINDLE;
360° COMPLIANCE

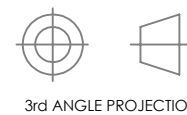


DETAIL B
SCALE 1 : 1

- NOTES:
- 230 WATT MOTOR, 50000 RPM MAX SPEED.
 - APPROXIMATE WEIGHT: 3.75LB. [1.70KG]
 - COMPLIANCE FORCE (APPROXIMATE) 0.4-1.8 LB [1.8-8 N], 15-60 PSI [1-4.1 BAR].
 - RADIAL COMPLIANCE TRAVEL AT COLLET = MAX \pm 3° (APPROXIMATELY .28" [7.1mm]).
 - SECONDARY MOUNTING SURFACE RESERVED FOR FUTURE ACCESSORIES TO RCE-230. CONTACT ATI FOR MORE INFORMATION.
 - POWER AND SIGNAL CABLE EXITS AS A PIGTAIL. NOT SHOWN. SEE SHEET 2 FOR WIRE DIAGRAM
 - SEALING AIR TUBE DIAMETER: 5/32" [4mm]. NOT SHOWN. APPROXIMATELY 1 FT [.3 m] WILL EXIT THE REAR OF THE TOOL AND BE CONNECTORIZED WITH AN FF SERIES QUICK DISCONNECT.

NOTES: UNLESS OTHERWISE SPECIFIED.

DO NOT SCALE DRAWING.
ALL DIMENSIONS ARE IN
MILLIMETERS.



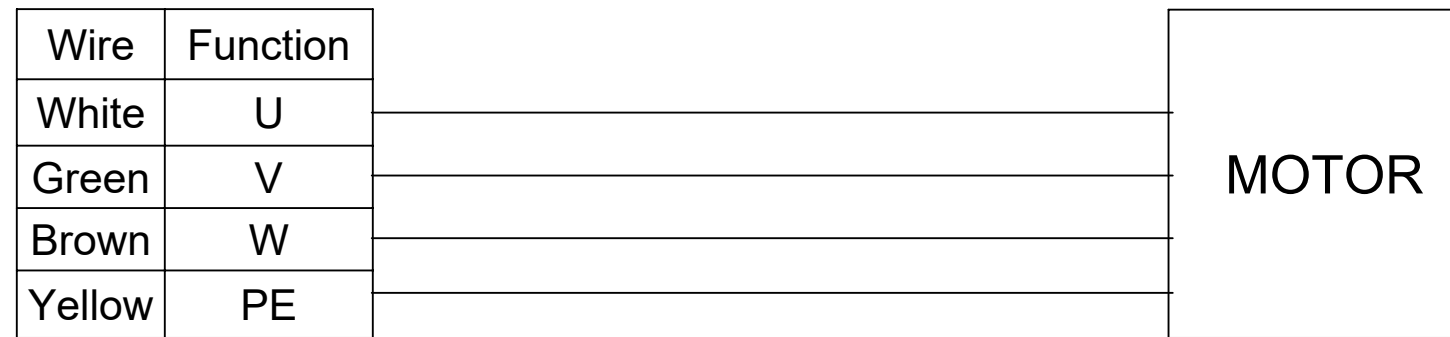
1031 Goodworth Drive, Apex, NC 27539, USA
Tel: +1.919.772.0115 www.ati-ia.com
Fax: +1.919.772.8259 ISO 9001 Registered Company

PROPERTY OF ATI INDUSTRIAL AUTOMATION, INC. NOT TO BE REPRODUCED IN ANY MANNER EXCEPT ON ORDER OR WITH PRIOR WRITTEN AUTHORIZATION OF ATI.

DRAWN BY: L. Larson 10/14/2021		TITLE	
CHECKED BY: G. Wuo 10/18/2021		Radially Compliant Electric Deburring Tool Customer Drawing, 230 Watts, 50000 RPM	
PROJECT # 201109-1	SHEET 1 OF 4	SCALE 1:2	REVISION 01
SIZE B	DRAWING NUMBER 9630-50-RCE-230		

9150-RCE-230

Pig-Tail Connections



NOTES: UNLESS OTHERWISE SPECIFIED.

DO NOT SCALE DRAWING. ALL DIMENSIONS ARE IN MILLIMETERS.



3rd ANGLE PROJECTION



1031 Goodworth Drive, Apex, NC 27539, USA
 Tel: +1.919.772.0115 www.ati-ia.com
 Fax: +1.919.772.8259 ISO 9001 Registered Company

PROPERTY OF ATI INDUSTRIAL AUTOMATION, INC. NOT TO BE REPRODUCED IN ANY MANNER EXCEPT ON ORDER OR WITH PRIOR WRITTEN AUTHORIZATION OF ATI.

DRAWN BY: L. Larson 10/14/2021

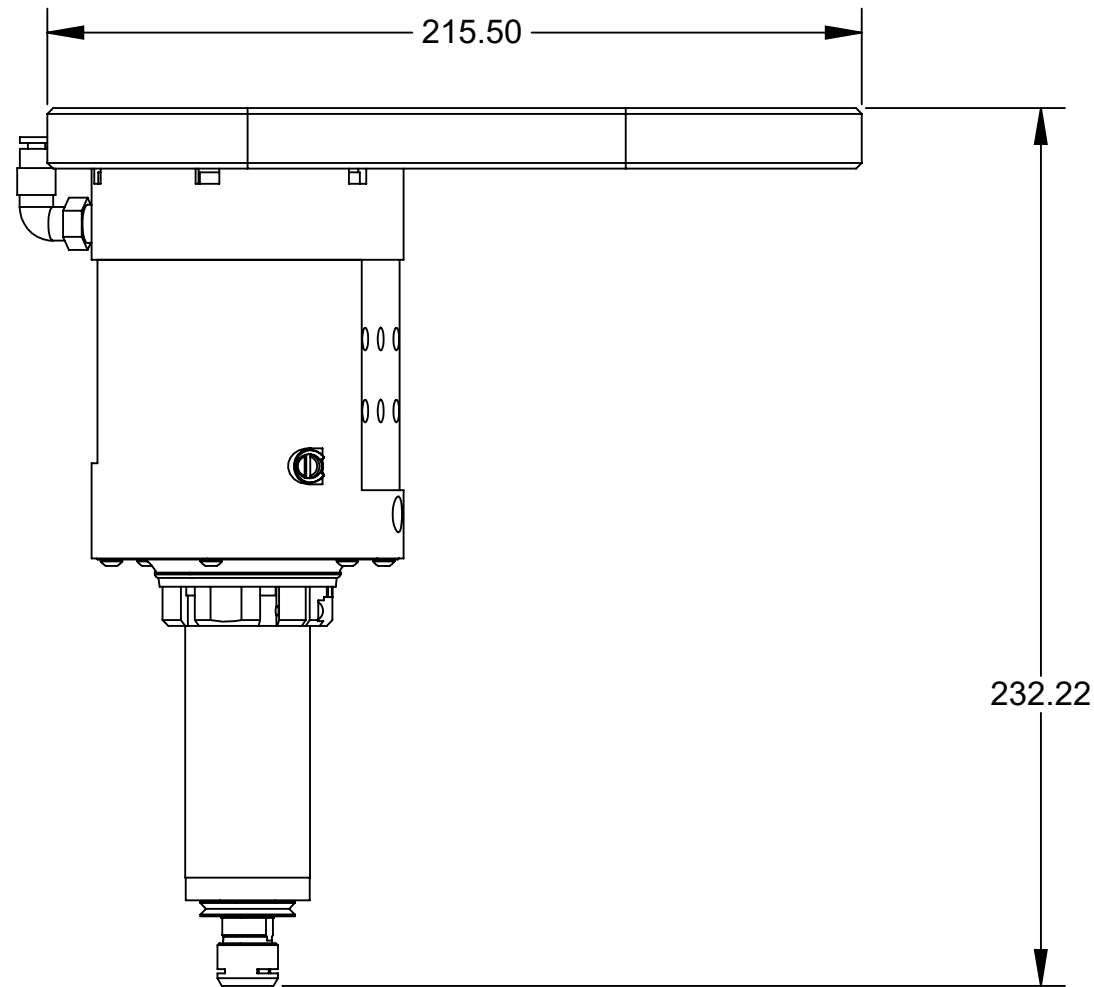
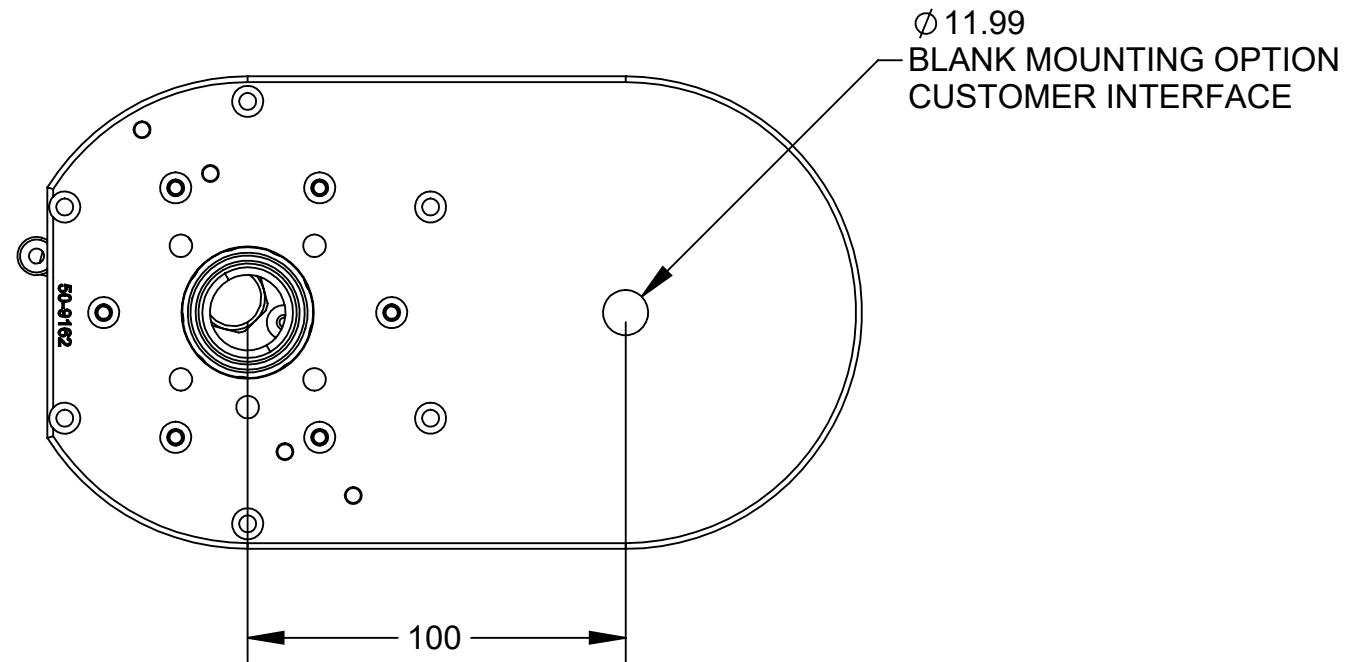
CHECKED BY: G. Wuo 10/18/2021

TITLE
 Radially Compliant Electric Deburring Tool Customer Drawing, 230 Watts, 50000 RPM

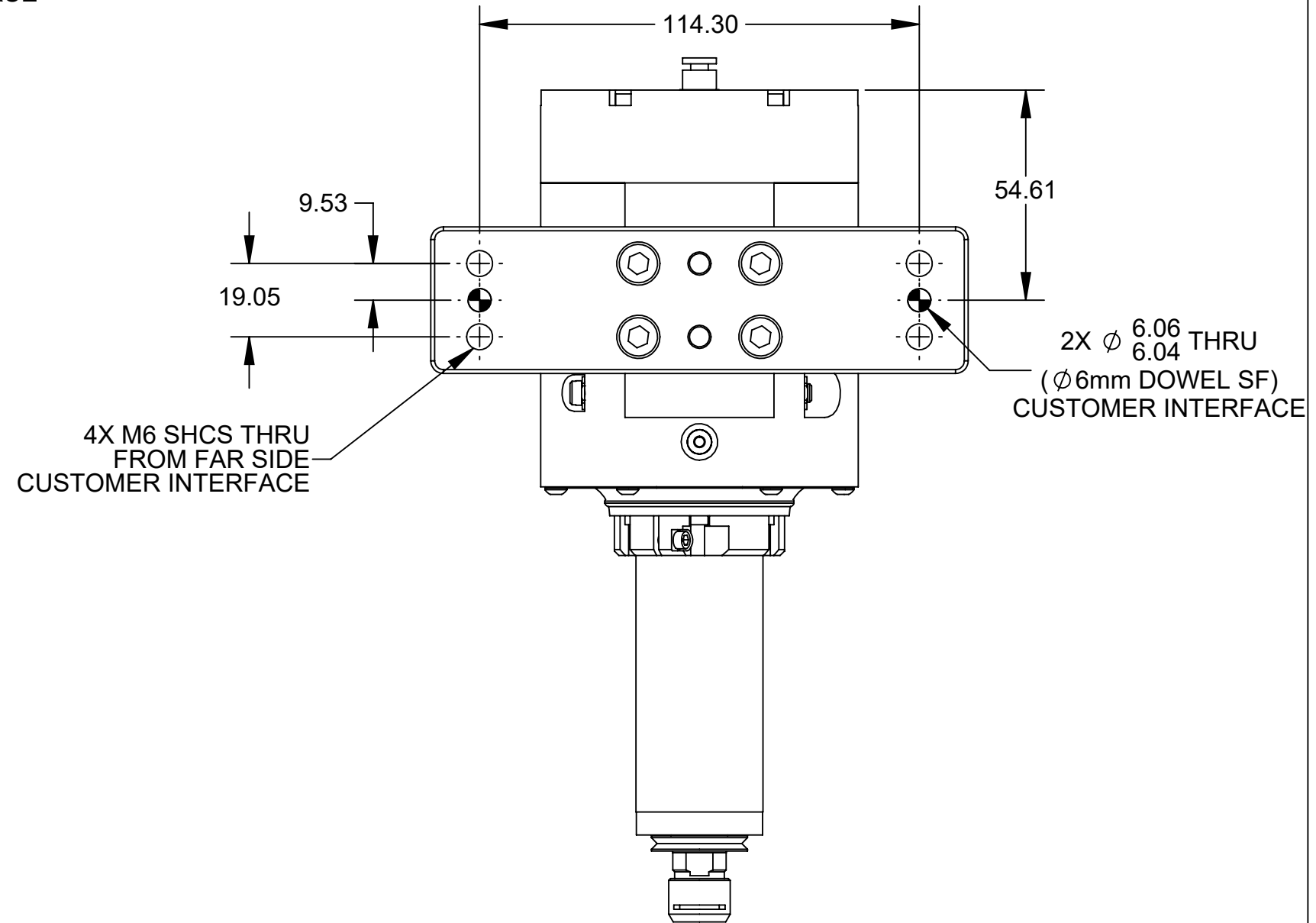
PROJECT # 201109-1 SHEET 2 OF 4

SCALE	SIZE	DRAWING NUMBER	REVISION
1:2	B	9630-50-RCE-230	01

OFFSET AXIAL MOUNT ADAPTER 9005-50-6159

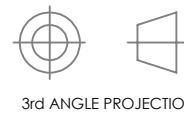


SIDE MOUNT ADAPTER 9005-50-6091



NOTES: UNLESS OTHERWISE SPECIFIED.

DO NOT SCALE DRAWING.
ALL DIMENSIONS ARE IN
MILLIMETERS.



1031 Goodworth Drive, Apex, NC 27539, USA
Tel: +1.919.772.0115 www.ati-ia.com
Fax: +1.919.772.8259 ISO 9001 Registered Company

PROPERTY OF ATI INDUSTRIAL AUTOMATION, INC. NOT TO BE REPRODUCED IN ANY MANNER EXCEPT ON ORDER OR WITH PRIOR WRITTEN AUTHORIZATION OF ATI.

DRAWN BY: L. Larson 10/14/2021

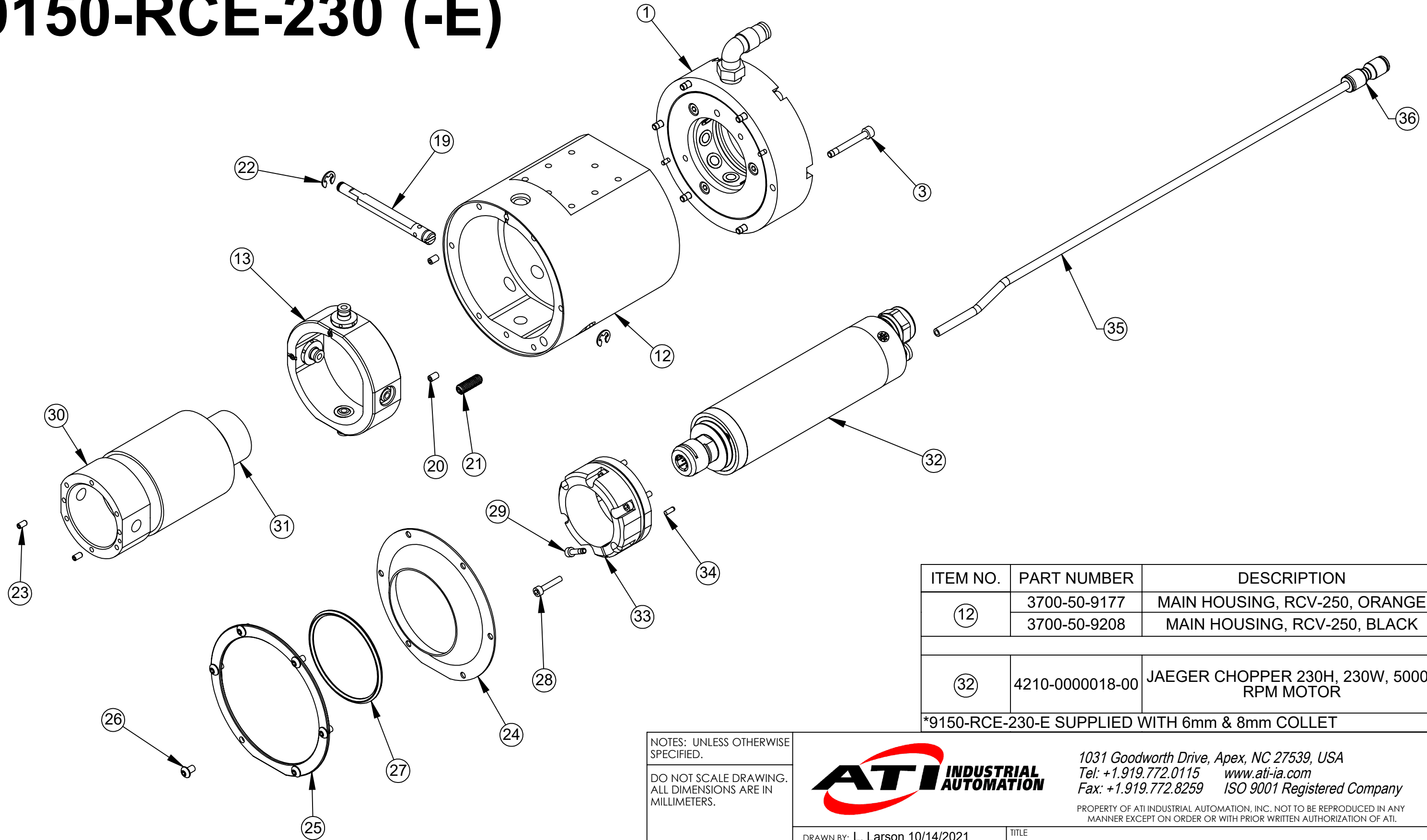
CHECKED BY: G. Wuo 10/18/2021

PROJECT # 201109-1 SHEET 3 OF 4

TITLE
Radially Compliant Electric Deburring Tool Customer
Drawing, 230 Watts, 50000 RPM

SCALE	SIZE	DRAWING NUMBER	REVISION
1:5	B	9630-50-RCE-230	01

9150-RCE-230 (-E)



ITEM NO.	PART NUMBER	DESCRIPTION
12	3700-50-9177	MAIN HOUSING, RCV-250, ORANGE
	3700-50-9208	MAIN HOUSING, RCV-250, BLACK
32	4210-0000018-00	JAEGER CHOPPER 230H, 230W, 50000 RPM MOTOR
*9150-RCE-230-E SUPPLIED WITH 6mm & 8mm COLLET		

NOTES: UNLESS OTHERWISE SPECIFIED.

DO NOT SCALE DRAWING. ALL DIMENSIONS ARE IN MILLIMETERS.



3rd ANGLE PROJECTION



1031 Goodworth Drive, Apex, NC 27539, USA
 Tel: +1.919.772.0115 www.ati-ia.com
 Fax: +1.919.772.8259 ISO 9001 Registered Company

PROPERTY OF ATI INDUSTRIAL AUTOMATION, INC. NOT TO BE REPRODUCED IN ANY MANNER EXCEPT ON ORDER OR WITH PRIOR WRITTEN AUTHORIZATION OF ATI.

DRAWN BY: L. Larson 10/14/2021		TITLE	
CHECKED BY: G. Wuo 10/18/2021		Radially Compliant Electric Deburring Tool Customer Drawing, 230 Watts, 50000 RPM	
PROJECT # 201109-1	SHEET 4 OF 4	SCALE 1:2	SIZE B
		DRAWING NUMBER 9630-50-RCE-230	REVISION 01