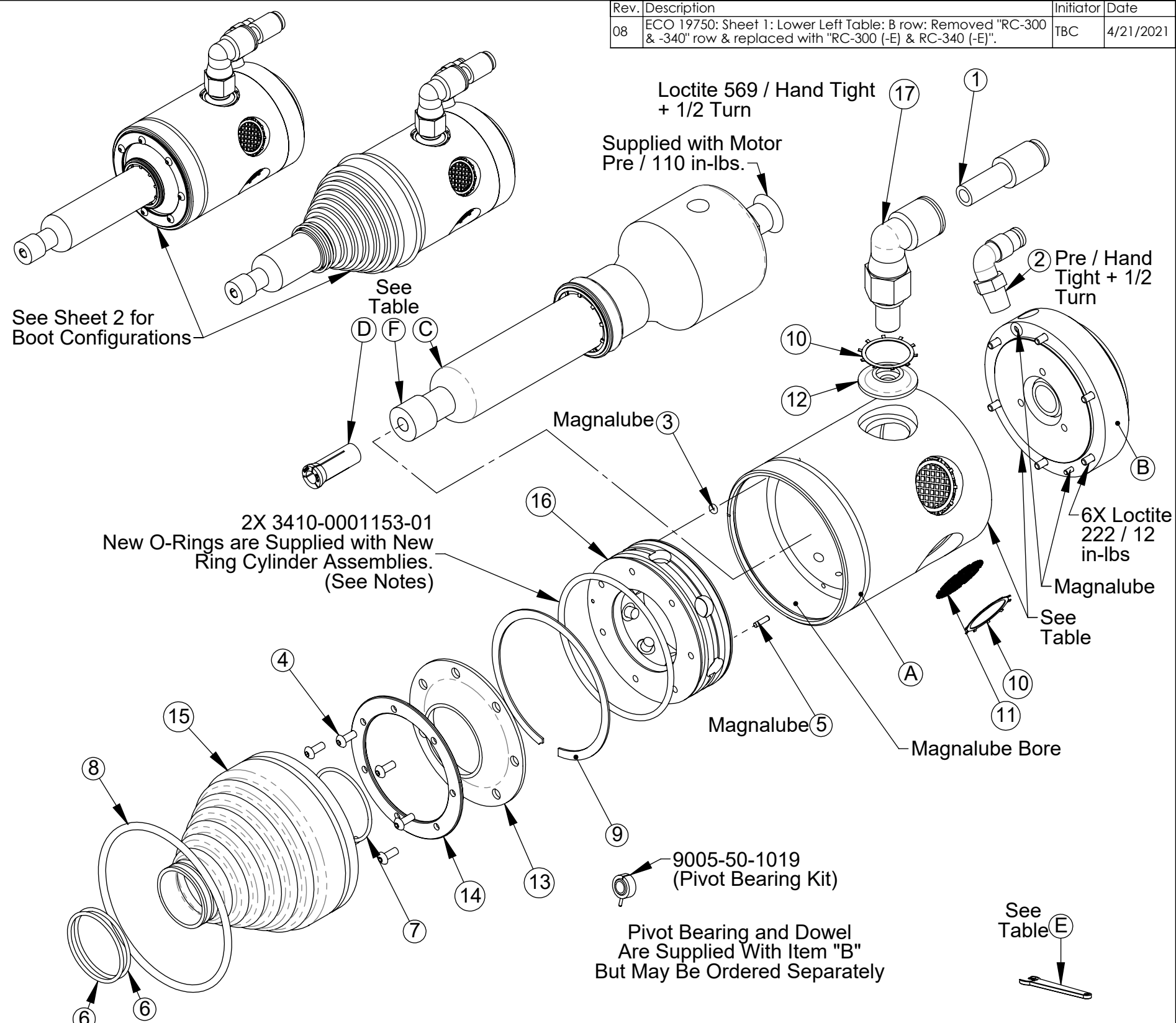


Rev.	Description	Initiator	Date
08	ECO 19750: Sheet 1: Lower Left Table: B row: Removed "RC-300 & -340" row & replaced with "RC-300 (-E) & RC-340 (-E)".	TBC	4/21/2021

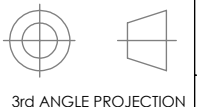
ITEM NO.	QTY.	PART NUMBER	DESCRIPTION
1	1	3405-1210010-01-01	ADAPTER, 3/8x5/16[8mm], McM#51495K308
2	1	3405-2210001-01	1/8NPT Swivel Elbow, 5/32 (4mm) PL Tubing
3	1	3410-0001151-01	O-RING, 1/16 x 1/16
4	7	3500-1158008-21	M3 X 8 BHCS, SS
5	1	3540-0102008-11	Dia 2mm x 8mm Dowel Pin
6	2	3610-0235001-21	GARTER SPRING, RC 150
7	1	3610-0340001-21	GARTER SPRING, RC 340
8	1	3610-0494000-20	GARTER SPRING, SR-081 Boot
9	1	3690-1200001-11	RET.INT. 2.76", UR-268
10	5	3690-7500003-11	RET.,INT. 1" 5005-100
11	4	3700-50-3005	DISK, FILTER, FLEXDEBURR
12	1	3700-50-3006	SUPPLY BOOT, FLEXDEBURR 340
13	1	3700-50-3007	BOOT, FLEXDEBURR 340
14	1	3700-50-3008	RING, BOOT, FLEXDEBURR 340
15	1	3700-50-3079	BOOT, RC-300/340, VITON
16	1	9005-50-1000	RING CYLINDER, FLEXDEBURR 340
17	1	9005-50-1002	ELBOW FITTING ASSY., FLEXDEBURR



NOTES:  
If the Old Ring-Cylinder Will Be Re-installed, New O-Rings are Recommended.

A	RC-300 & -340	1	3700-50-3000	Front Housing, Orange
	RC-300-E & -340-E	1	3700-50-3019	Front Housing, Black
B	RC-300 (-E) & RC-340 (-E)	1	9005-50-1018	Rear Housing Assembly, Black
C	RC-300 & -300-E	1	9005-50-1066	300 W, 30k RPM Motor Assembly
	RC-340 & -340-E	1	9005-50-1065	340 W, 40k RPM Motor Assembly
Optional / Spare Collets	All	OPT.	9150-RC-C-12442	3mm Collet
		OPT.	9150-RC-C-12443	1/8" Collet
		OPT.	9150-RC-C-12444	3/16" Collet
		OPT.	9150-RC-C-12445	6mm Collet (Standard on Metric Models)
		OPT.	9150-RC-C-12446	1/4" Collet (Standard on Inch Models)
E	All	OPT.	9150-RC-T-12475	7/16" Collet Wrench
		OPT.	9150-RC-T-12479	9/16" Collet Wrench
F	All	1	3700-50-3081	Collet Nut (.450 x .318 Hole)
		1	3700-50-3082	Collet Nut (.450 x .254 Hole)

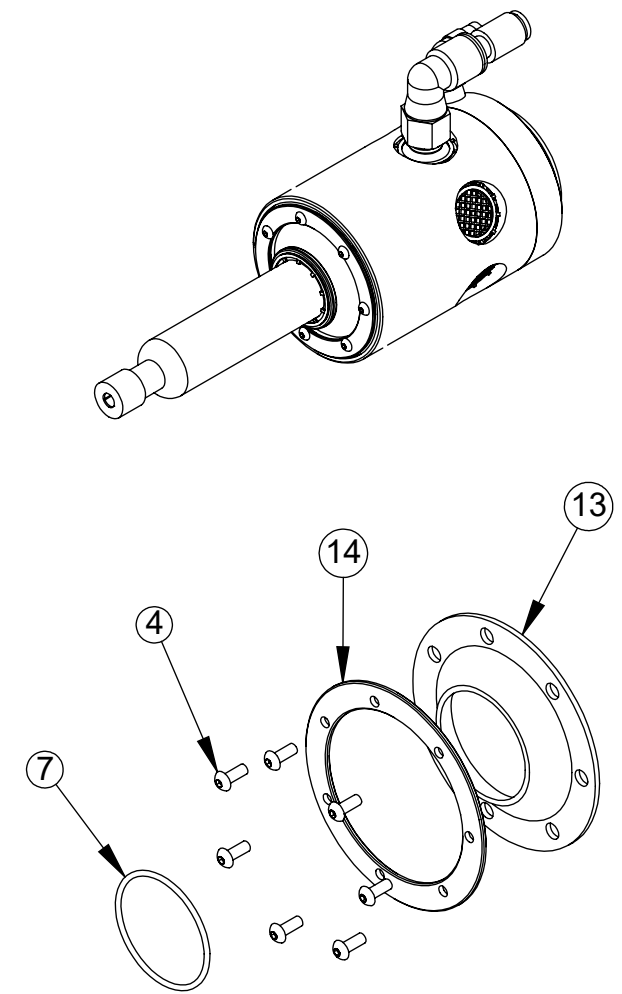
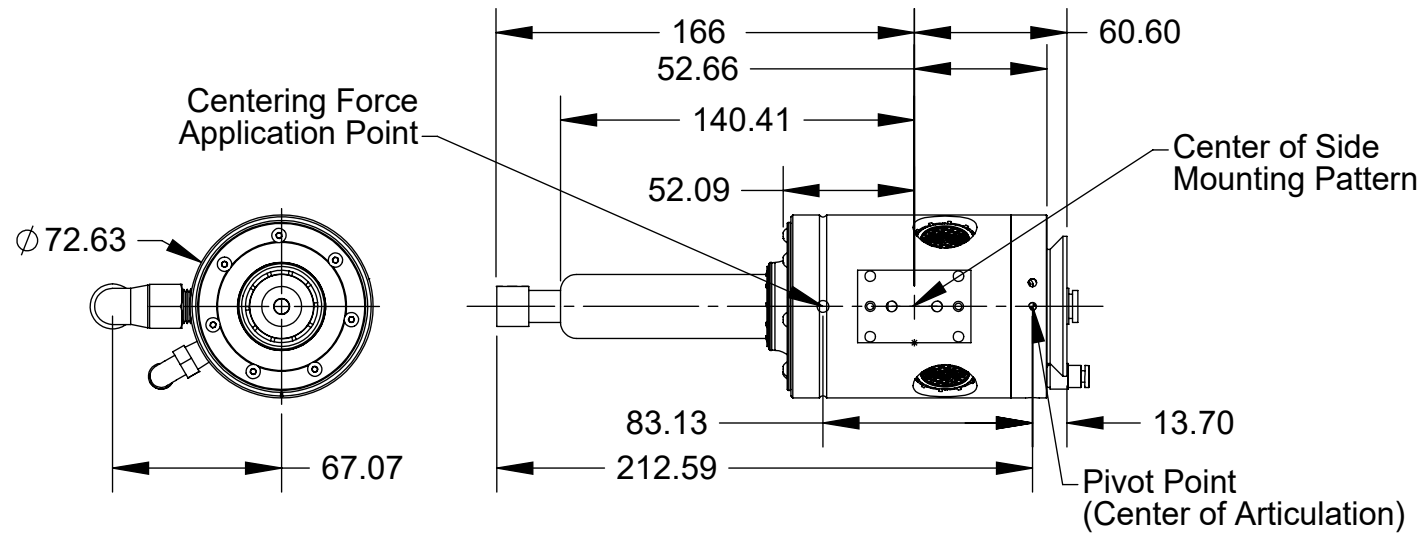
NOTES: UNLESS OTHERWISE SPECIFIED.  
DO NOT SCALE DRAWING. ALL DIMENSIONS ARE IN MILLIMETERS.



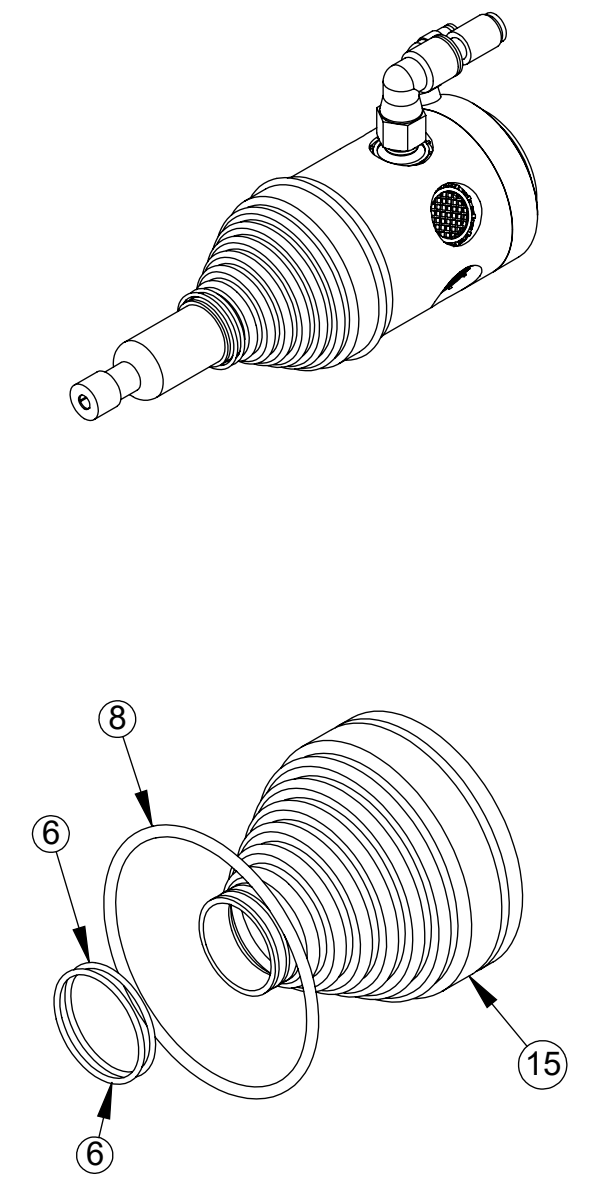
1031 Goodworth Drive, Apex, NC 27539, USA  
Tel: +1.919.772.0115 www.ati-ia.com  
Fax: +1.919.772.8259 ISO 9001 Registered Company

PROPERTY OF ATI INDUSTRIAL AUTOMATION, INC. NOT TO BE REPRODUCED IN ANY MANNER EXCEPT ON ORDER OR WITH PRIOR WRITTEN AUTHORIZATION OF ATI.

DRAWN BY: D.Lawson-7/31/06		TITLE	
CHECKED BY: L.Hines-8/10/06		RC-300 Series Service Parts	
PROJECT # 060725-1	SHEET 1 OF 2	SCALE 1:5	SIZE B
DRAWING NUMBER 9630-50-RC-300 SERIES		REVISION 08	



Flat Disk Boot  
(Note 1)



Tapered Bellows Boot  
(Note 1)

- Notes:
1. The flat disk boot will be located under the tapered bellows boot. The tapered boot may be removed if necessary.
  2. All dimensions are for reference only.

NOTES: UNLESS OTHERWISE SPECIFIED.				1031 Goodworth Drive, Apex, NC 27539, USA	
DO NOT SCALE DRAWING. ALL DIMENSIONS ARE IN MILLIMETERS.				Tel: +1.919.772.0115 <a href="http://www.ati-ia.com">www.ati-ia.com</a>	
 3rd ANGLE PROJECTION		DRAWN BY: D.Lawson-7/31/06		TITLE	
		CHECKED BY: L.Hines-8/10/06		RC-300 Series Service Parts	
PROJECT # 060725-1 SHEET 2 OF 2		SCALE	SIZE	DRAWING NUMBER	REVISION
		1:5	B	9630-50-RC-300 SERIES	08

Fax: +1.919.772.8259 ISO 9001 Registered Company  
 PROPERTY OF ATI INDUSTRIAL AUTOMATION, INC. NOT TO BE REPRODUCED IN ANY MANNER EXCEPT ON ORDER OR WITH PRIOR WRITTEN AUTHORIZATION OF ATI.