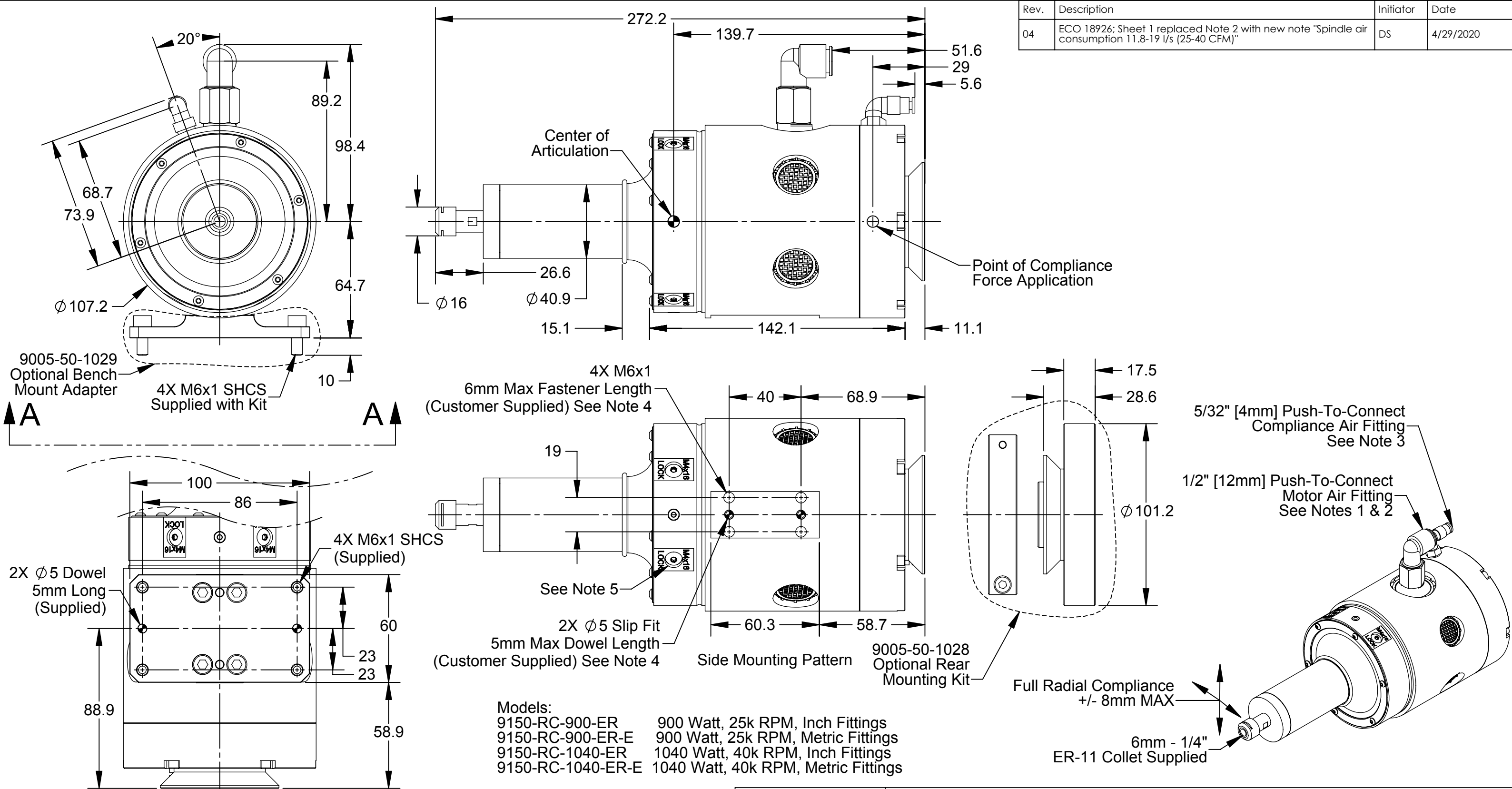


Rev.	Description	Initiator	Date
04	ECO 18926: Sheet 1 replaced Note 2 with new note "Spindle air consumption 11.8-19 l/s (25-40 CFM)"	DS	4/29/2020



**VIEW A-A**  
(9005-50-1029 Optional Bench Mount Adapter)

- Notes:**
- Motor air must be dry, oil free, filtered 5 micron or better and supplied at 90 PSI [6.2 Bar].
  - Spindle air consumption 11.8-19 l/s (25-40 CFM).
  - Compliance air pressure range: 5-60 PSI [.34-4.1 Bar].
  - Do not exceed maximum fastener lengths shown.
  - Four M4x.7 fasteners may be installed where shown to reduce articulation to a single, vertical axis.

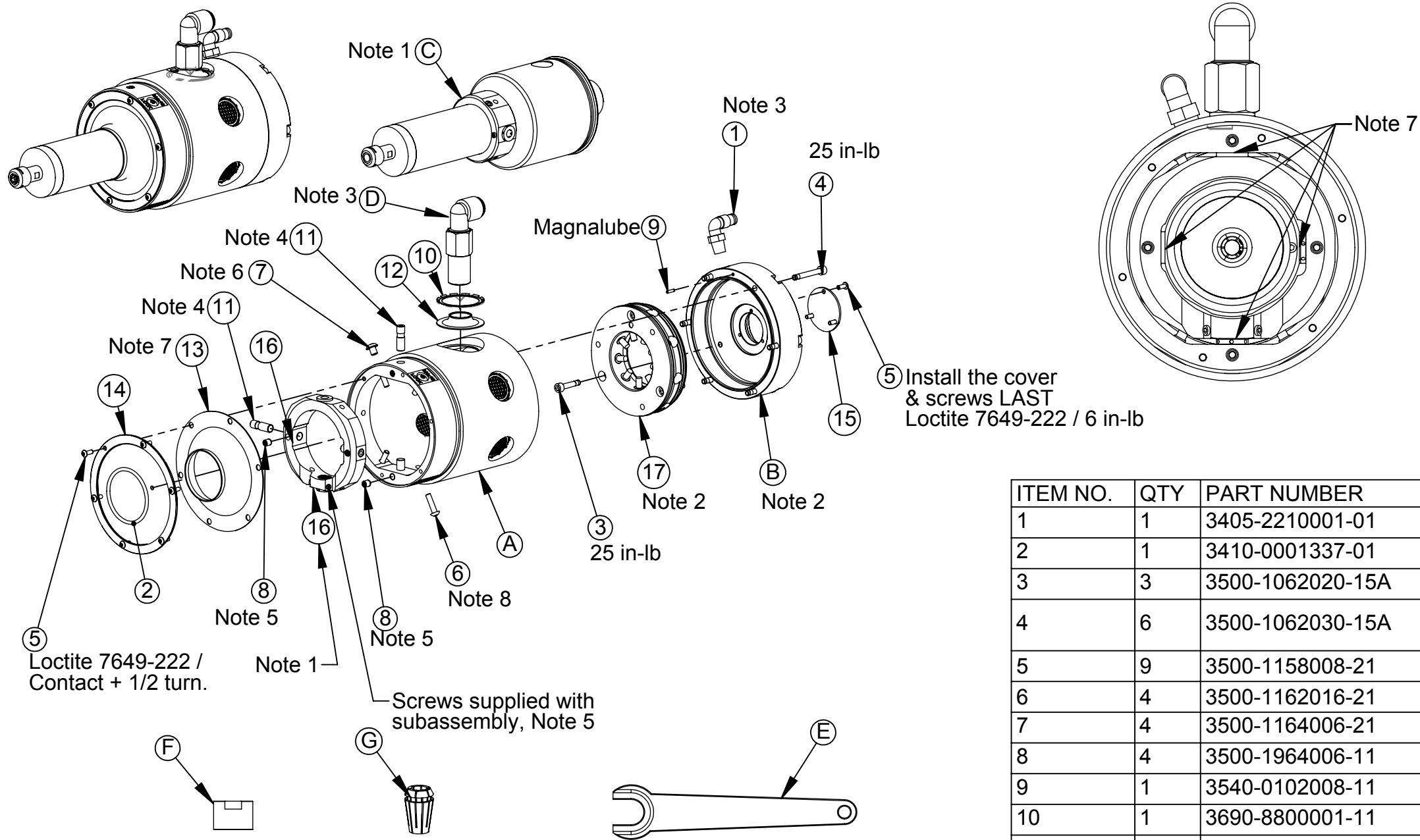
NOTES: UNLESS OTHERWISE SPECIFIED.  
 DO NOT SCALE DRAWING. ALL DIMENSIONS ARE IN MILLIMETERS.



1031 Goodworth Drive, Apex, NC 27539, USA  
 Tel: +1.919.772.0115 Email: info@ati-ia.com  
 Fax: +1.919.772.8259 www.ati-ia.com  
 ISO 9001 Registered Company

PROPERTY OF ATI INDUSTRIAL AUTOMATION, INC. NOT TO BE REPRODUCED IN ANY MANNER EXCEPT ON ORDER OR WITH PRIOR WRITTEN AUTHORIZATION OF ATI.

DRAWN BY: D.Lawson-3/15/16		TITLE	
CHECKED BY: K.Zachary-3/17/16		RC-1000 Series Customer Drawing	
PROJECT # 130222-1	SHEET 1 OF 2	SCALE 1:2	SIZE B
DRAWING NUMBER 9630-50-RC-1000-Series		REVISION 04	



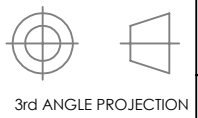
- Notes:
1. Refer to the operators manual regarding when and how to adjust bushing clearance & the motor pivot post.
  2. Magnalube ring cylinder o-rings and rear housing bore before installing ring cylinder.
  3. Loctite 569, finger tight + 1/2 turn.
  4. Magnalube the diameter of the pivot pins.
  5. Torque and Loctite to be determined during first build.
  6. Loctite 7649 primer and Loctite 222, 25 in-lb.
  7. Apply 1 drop of 10W to 30W oil to each bushing between gimbal and bushing faces prior to fitting the flat boot and boot ring.
  8. M4 SBHCS are used for single axis pivoting. Place in storage bag when using tool with full radial compliance.

ITEM NO.	QTY	PART NUMBER	DESCRIPTION
1	1	3405-2210001-01	1/8NPT Swivel Elbow, 5/32 (4mm) PL Tubing
2	1	3410-0001337-01	O-Ring, AS568-127, Viton, 75A, Brown, RoHS
3	3	3500-1062020-15A	M4-0.7 x 20mm SHCS, Blue, Pre-Applied
4	6	3500-1062030-15A	M4-0.7 x 30mm SHCS, Blue, Pre-Applied
5	9	3500-1158008-21	M3 x 8mm SBHCS, SS
6	4	3500-1162016-21	BHCS, M4x16, SS
7	4	3500-1164006-21	M5 x 6mm Button Head Socket Cap Screw, SS
8	4	3500-1964006-11	Set Screw, M5x6, Cup Point, Alloy
9	1	3540-0102008-11	Dowel, M2 x 8mm, Alloy Steel
10	1	3690-8800001-11	Retaining Ring, Internal, Steel, 1.5"
11	4	3700-50-4206	Pin, Pivot, 20.25mm
12	1	3700-50-4210	Disk Boot, Side, RC-1000
13	1	3700-50-4211	Disk Boot, Front Pivot, RC-1000
14	1	3700-50-4212	Ring, Retainer, Disk Boot, Front Pivot RC-1000
15	1	3700-50-4225	Rear Entrance Cover, RC-1000
16	1	9005-50-1039	Gimbal Ring, RC-1000
17	1	9005-50-1044	Ring Cylinder Assembly, Front Pivot, RC-1000
22	1	9150-RC-C-22768	ER-11 COLLET, 6mm

Item	Application	Qty.	Part Number	Description
A	RC-900-ER & RC-1040-ER (Orange Bodies)	1	9005-50-1037	Housing, Front, RC-1000, Orange
	RC-900-ER-E & RC-1040-ER-E (Black Bodies)	1	9005-50-1038	Housing, Front, RC-1000, Black
B	RC-900-ER & RC-1040-ER (Orange Bodies)	1	3700-50-4222	Housing, Rear, RC-1000, Orange
	RC-900-ER-E & RC-1040-ER-E (Black Bodies)	1	3700-50-4227	Housing, Rear, RC-1000, Black
C	RC-1040-ER & RC-1040-ER-E	1	9005-50-1036	Motor Assy., RC-1040, 1040W, 40k RPM
	RC-900-ER & RC-900-ER-E	1	9005-50-1045	Motor Assy., RC-900, 900W, 25k RPM
D	RC-900-ER & RC-1040-ER (Orange Bodies)	1	9005-50-1030	Fitting, Motor Supply, 1/2"
	RC-900-ER-E & RC-1040-ER-E (Black Bodies)	1	9005-50-1040	Fitting, Motor Supply, 12mm
E	All	1	9150-RC-T-11058	Wrench, Collet, ER-11, Rego
		1	9150-RC-T-12475	Wrench, Collet, 7/16"
F	All	1	9150-RC-C-11057	Nut, Collet, ER-11, Rego
G	All - Optional Size Collets	1	9150-RC-C-11048	Collet, ER-11, 4mm
		1	9150-RC-C-87694497	Collet, ER-11, 6mm to 1/4"
		1	9150-RC-C-22768	Collet, ER-11, 6mm

NOTES: UNLESS OTHERWISE SPECIFIED.

DO NOT SCALE DRAWING. ALL DIMENSIONS ARE IN INCHES.



1031 Goodworth Drive, Apex, NC 27539, USA  
 Tel: +1.919.772.0115 Email: info@ati-ia.com  
 Fax: +1.919.772.8259 www.ati-ia.com  
 ISO 9001 Registered Company

PROPERTY OF ATI INDUSTRIAL AUTOMATION, INC. NOT TO BE REPRODUCED IN ANY MANNER EXCEPT ON ORDER OR WITH PRIOR WRITTEN AUTHORIZATION OF ATI.

DRAWN BY: D.Lawson-3/15/16		TITLE	
CHECKED BY: K.Zachary-3/17/16		RC-1000 Series Customer Drawing	
PROJECT # 130222-1	SHEET 2 OF 2	SCALE 1:4	SIZE B
DRAWING NUMBER 9630-50-RC-1000-Series		REVISION 04	