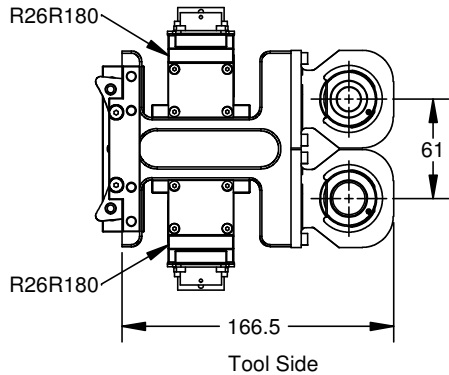
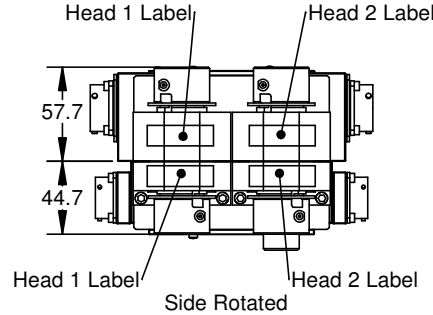
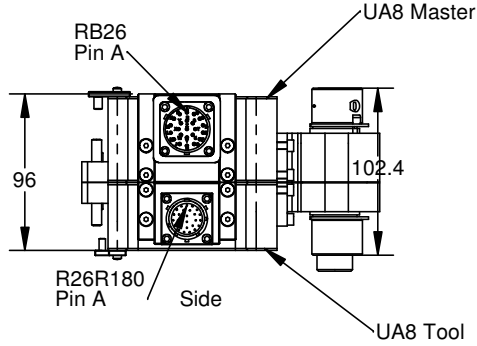
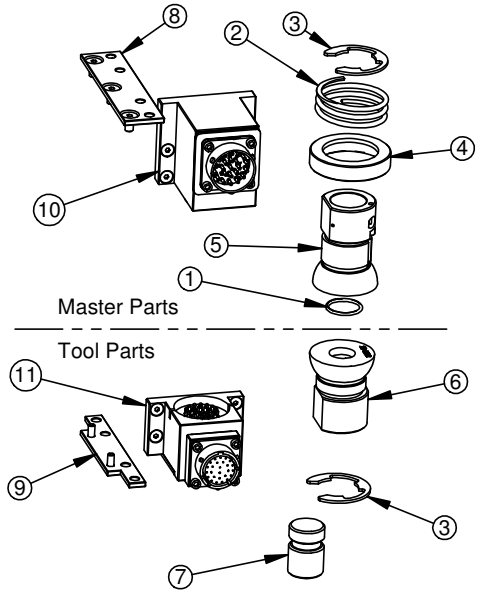
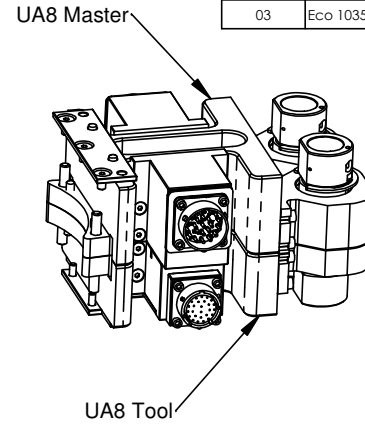
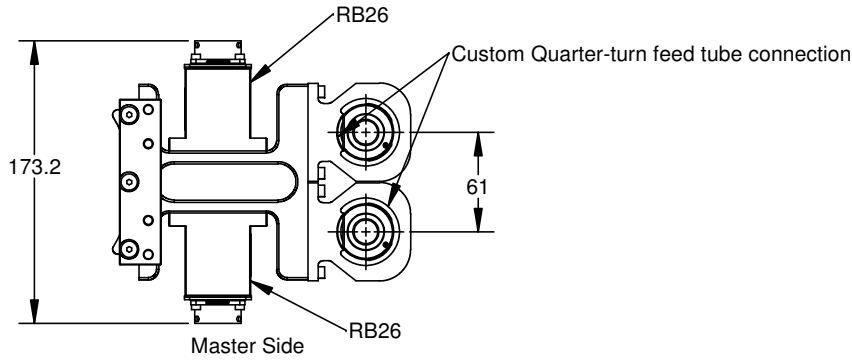


Rev.	Description	Initiator	Date
02P	Bumped revision - vault maintenance.	KLP	1/28/2010
03	Eco 10352, Release, added callouts for Pin A	LJH	11/7/2012



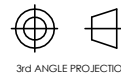
Item No	Qty	Part Number	Description
1	2	3410-0001051-01	O-ring AS-568A-018
2	2	3610-1807501-21	SS Compression Spring
3	4	3690-2700001-11	E-Ring, 1.1875, Black Phosphate
4	2	3700-20-2309	Stud Welder Attachment Race
5	2	3700-20-6221	Master Swivel, Quarter-Turn, Dia 14.5, Small Chamfer
6	2	3700-20-6222	Tool Swivel, Quarter-Turn, Dia 14.5, Small Chamfer
7	1	3700-20-6224	Tool Swivel, Quarter-Turn, Plug
8	1	9005-20-1198	Master Cleat
9	1	9005-20-1199	Tool Cleat
10	2	9120-RB26-M	RB26 Master module
11	2	9120-R26R180-T	R26R180 Tool Module

NOTES: UNLESS OTHERWISE SPECIFIED
DO NOT SCALE DRAWING. DRAWN IN SOLIDWORKS.
ALL DIMENSIONS ARE IN MILLIMETERS.



1031 Goodworth Drive, Apex, NC 27539, USA
Tel: +1.919.772.0115 Email: info@ati-ia.com
Fax: +1.919.772.8259 www.ati-ia.com
ISO 9001 Registered Company

PROPERTY OF ATI INDUSTRIAL AUTOMATION, INC. NOT TO BE REPRODUCED IN ANY MANNER EXCEPT ON ORDER OR WITH PRIOR WRITTEN AUTHORIZATION OF ATI.



3rd ANGLE PROJECTION

DRAWN BY: Ken Potts 1/13/10		TITLE: UA8 Utility Stud Feed Modules	
CHECKED BY: D Norton 1/13/10		SCALE: 1:3	SIZE: B
WEIGHT LBS: 5.42		DRAWING NUMBER: 9630-20-UA8	
ASSEMBLY REF:		PRODUCT RELEASE #	REVISION: 03
		DATE:	SHEET 1 OF 1