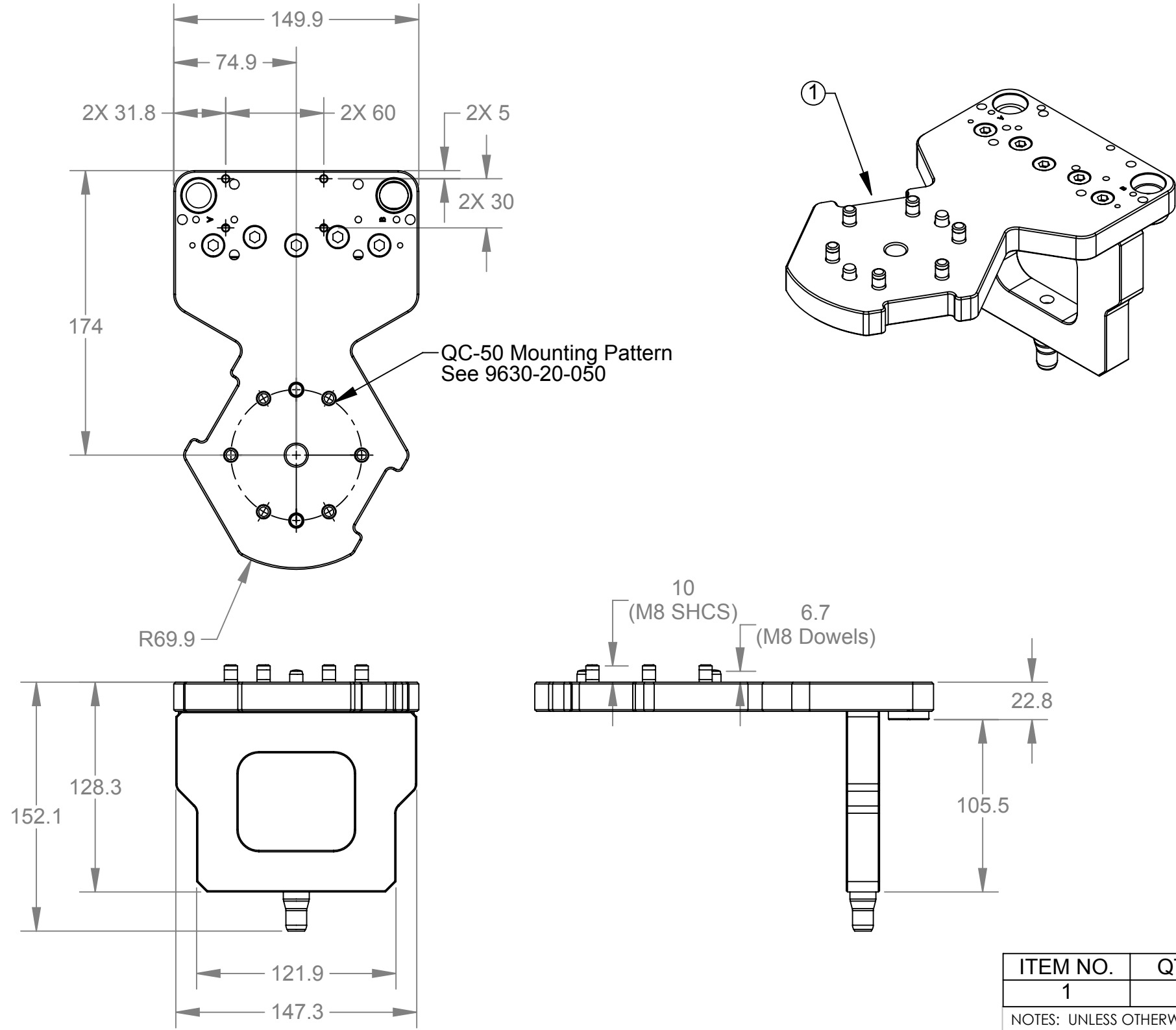
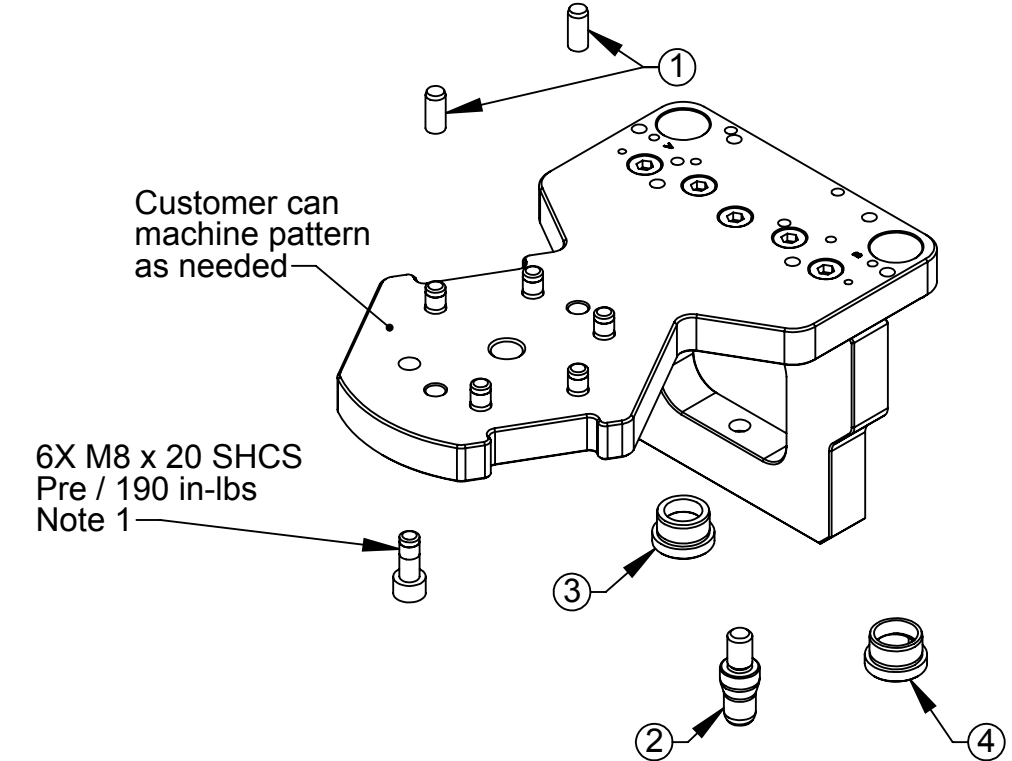
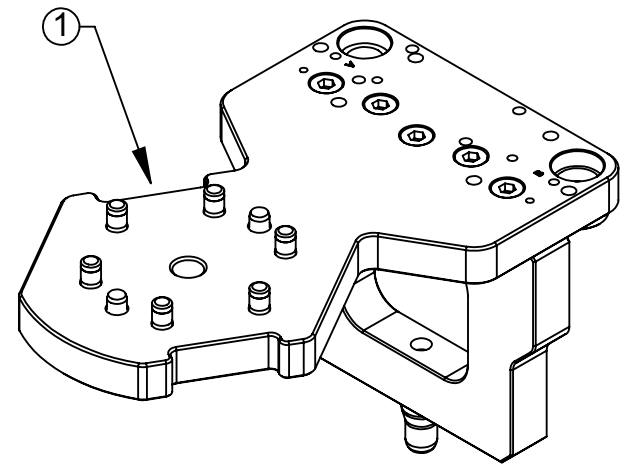


Rev.	Description	Initiator	Date
02	ECO 16373: Updated customer drawing to reflect addition of TSM-MA03 mounting pattern to TSM interface plate.	TBC	1/12/2018



QC-50 Mounting Pattern
See 9630-20-050



6X M8 x 20 SHCS
Pre / 190 in-lbs
Note 1

Serviceable Items			
ITEM NO.	QTY.	PART NUMBER	DESCRIPTION
1	2	3540-0108020-11	8mm x 20mm Dowel Alloy Steel
2	1	3700-20-8434	TSM Pin & Bushing, Alignment Pin, Dual Taper
3	1	3700-20-8435	Drill Bushing, Flanged, 16mm ID
4	1	3700-20-8436	Drill Bushing, Flanged, Elongated, 16mm ID

- Notes:
1. Fasteners & Dowels shipped loose. To be installed by customer.
 2. Plate material: 6061-T6 Aluminum, soft coat black anodize.
 3. Weight: approx. 8.9 lbs.

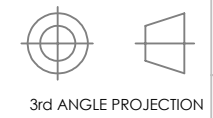
ITEM NO.	QTY.	PART NUMBER	DESCRIPTION
1	1	9120-TSM-HBQ-9566	TSM Tooling Interface Plate QC-50 - Blank

NOTES: UNLESS OTHERWISE SPECIFIED.
DO NOT SCALE DRAWING. ALL DIMENSIONS ARE IN MILLIMETERS.



1031 Goodworth Drive, Apex, NC 27539, USA
Tel: +1.919.772.0115 Email: info@ati-ia.com
Fax: +1.919.772.8259 www.ati-ia.com
ISO 9001 Registered Company

PROPERTY OF ATI INDUSTRIAL AUTOMATION, INC. NOT TO BE REPRODUCED IN ANY MANNER EXCEPT ON ORDER OR WITH PRIOR WRITTEN AUTHORIZATION OF ATI.



DRAWN BY: D. Bohle 1/21/2016		TITLE	
CHECKED BY: J. Winterroth 3/1/2016		TSM Tooling Interface Plate for QC-50 - Blank	
PROJECT # 150928-1	SHEET 1 OF 1	SCALE 1:3	SIZE B
DRAWING NUMBER 9630-20-TSM-HBQ-9566		REVISION 02	