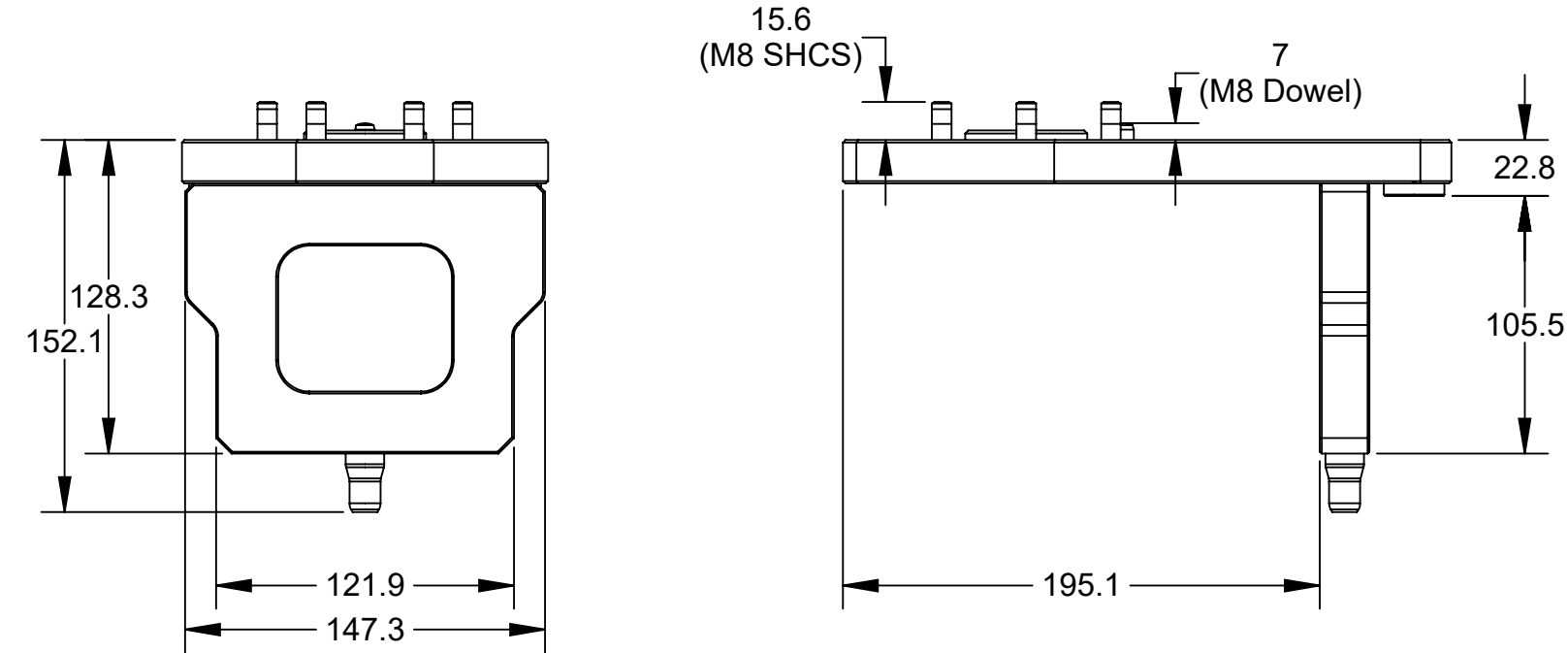
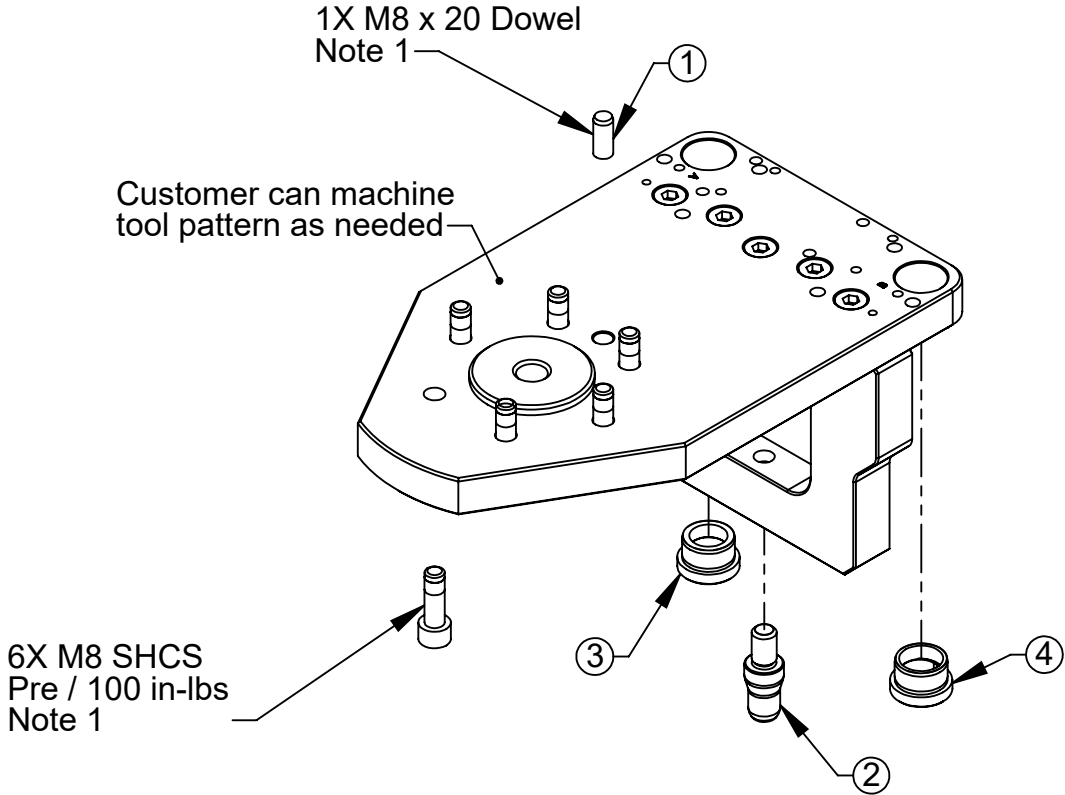
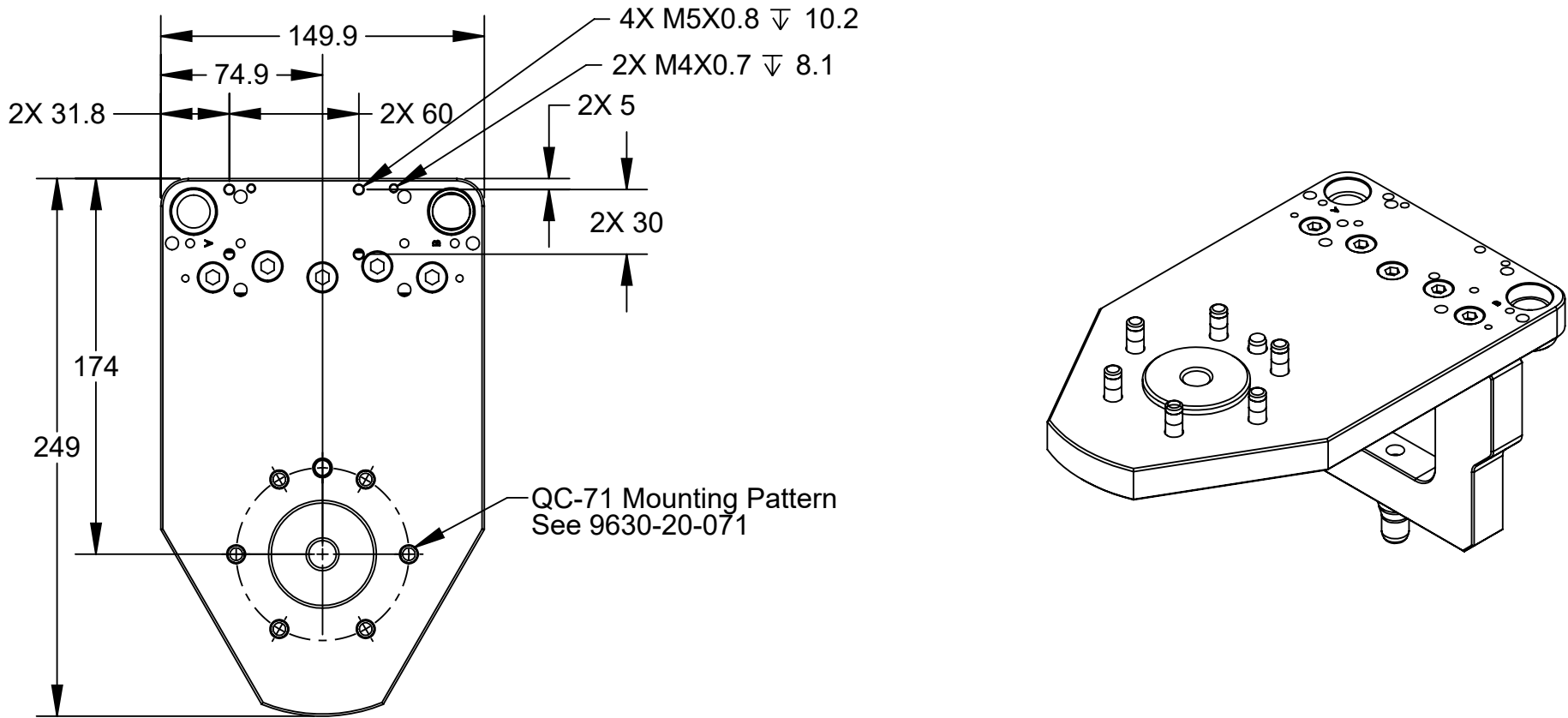


Rev.	Description	Initiator	Date
03	ECO 20595: Updated to reflect added M4 holes in Tool Plate. Updated title block.	REH	1/19/2022



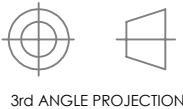
Serviceable Items			
ITEM NO.	QTY	PART NUMBER	DESCRIPTION
1	1	3540-0108020-11	8mm x 20mm Dowel Alloy Steel
2	1	3700-20-8434	TSM Pin & Bushing, Alignment Pin, Dual Taper
3	1	3700-20-8435	Drill Bushing, Flanged, 16mm ID
4	1	3700-20-8436	Drill Bushing, Flanged, Elongated, 16mm ID

Notes:

1. Fasteners & Dowel shipped loose. To be installed by customer.
2. Plate material: 6061-T6 Aluminum, soft coat black anodize.
3. Plate weight: Approx 5.2 lbs.

NOTES: UNLESS OTHERWISE SPECIFIED.

DO NOT SCALE DRAWING. ALL DIMENSIONS ARE IN MILLIMETERS.



1031 Goodworth Drive, Apex, NC 27539, USA  
Tel: +1.919.772.0115 Fax: +1.919.772.8259  
www.ati-ia.com ISO 9001 Registered Company

PROPERTY OF ATI INDUSTRIAL AUTOMATION, INC. NOT TO BE REPRODUCED IN ANY MANNER EXCEPT ON ORDER OR WITH PRIOR WRITTEN AUTHORIZATION OF ATI.

DRAWN BY: J. Winterroth, 5/15/15		TITLE TSM Tooling Interface Plate for QC-71 - Blank			
CHECKED BY: D. Norton, 5/20/15					
PROJECT # 150511-1 SHEET 1 OF 1		SCALE 1:3	SIZE B	DRAWING NUMBER 9630-20-TSM-HBQ-9360	REVISION 03