


REV.	DESCRIPTION	INITIATOR	DATE
01P	INITIAL DRAWING	DCT	9/8/2022
02	DRAWING RELEASE	DCT	9/08/2022


PART NUMBERS:
(A) 9128-TSL8-PB-11751

- NOTES:
1. FASTENERS SHIPPED LOOSE. CUSTOMER TO INSTALL AT SPECIFIED TORQUE.
 2. SHOWN WITH QC-830 TOOL, TYPE 9128-830CT-X. NOT INCLUDED.
 3. SHOWN WITH QC-835 TOOL, TYPE 9128-835CT-X. NOT INCLUDED.
 4. SHOWN WITH QC-850 TOOL, TYPE 9128-850DT-X. NOT INCLUDED.
 5. FOR TOP LEVEL TOOL STAND SOLUTIONS REFERENCE THE FOLLOWING.
QC-830 REF 9230-20-8423, QC-835 REF 9230-20-8424, QC-850 REF 9230-20-8425.
 6. CONTACT ATI ENGINEERING FOR INFORMATION ON COMPLETE TOOL STAND SYSTEM.
(INCLUDING POST MODULES, AND DEBRIS SHIELDS).

NOTES: UNLESS OTHERWISE SPECIFIED.

DO NOT SCALE DRAWING. ALL DIMENSIONS ARE IN MILLIMETERS.


3rd ANGLE PROJECTION



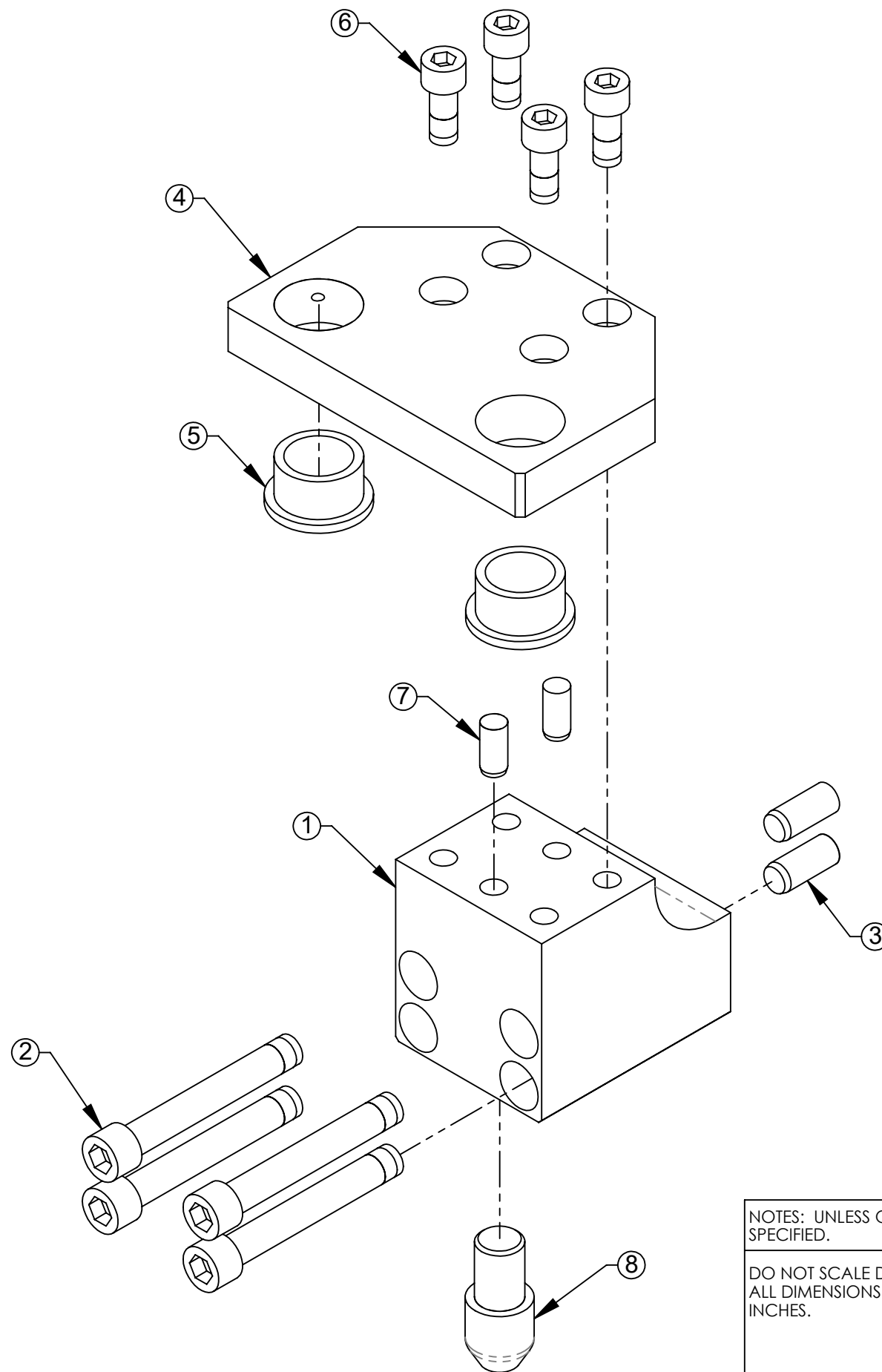
1031 Goodworth Drive, Apex, NC 27539, USA

Tel: +1.919.772.0115 www.ati-ia.com

Fax: +1.919.772.8259 ISO 9001 Registered Company

PROPERTY OF ATI INDUSTRIAL AUTOMATION, INC. NOT TO BE REPRODUCED IN ANY MANNER EXCEPT ON ORDER OR WITH PRIOR WRITTEN AUTHORIZATION OF ATI.

DRAWN BY: D. THOMAS, 3/16/22		TITLE	
CHECKED BY: M. GALA, 7/26/22		TSL8 PIN & BUSHING MODULE	
PROJECT # 180829-4	SHEET 1 OF 3	SCALE 1:2	SIZE B
		DRAWING NUMBER	REVISION
		9630-20-TSL8-PB-11751	02



NOTES: UNLESS OTHERWISE
SPECIFIED.

DO NOT SCALE DRAWING.
ALL DIMENSIONS ARE IN
INCHES.

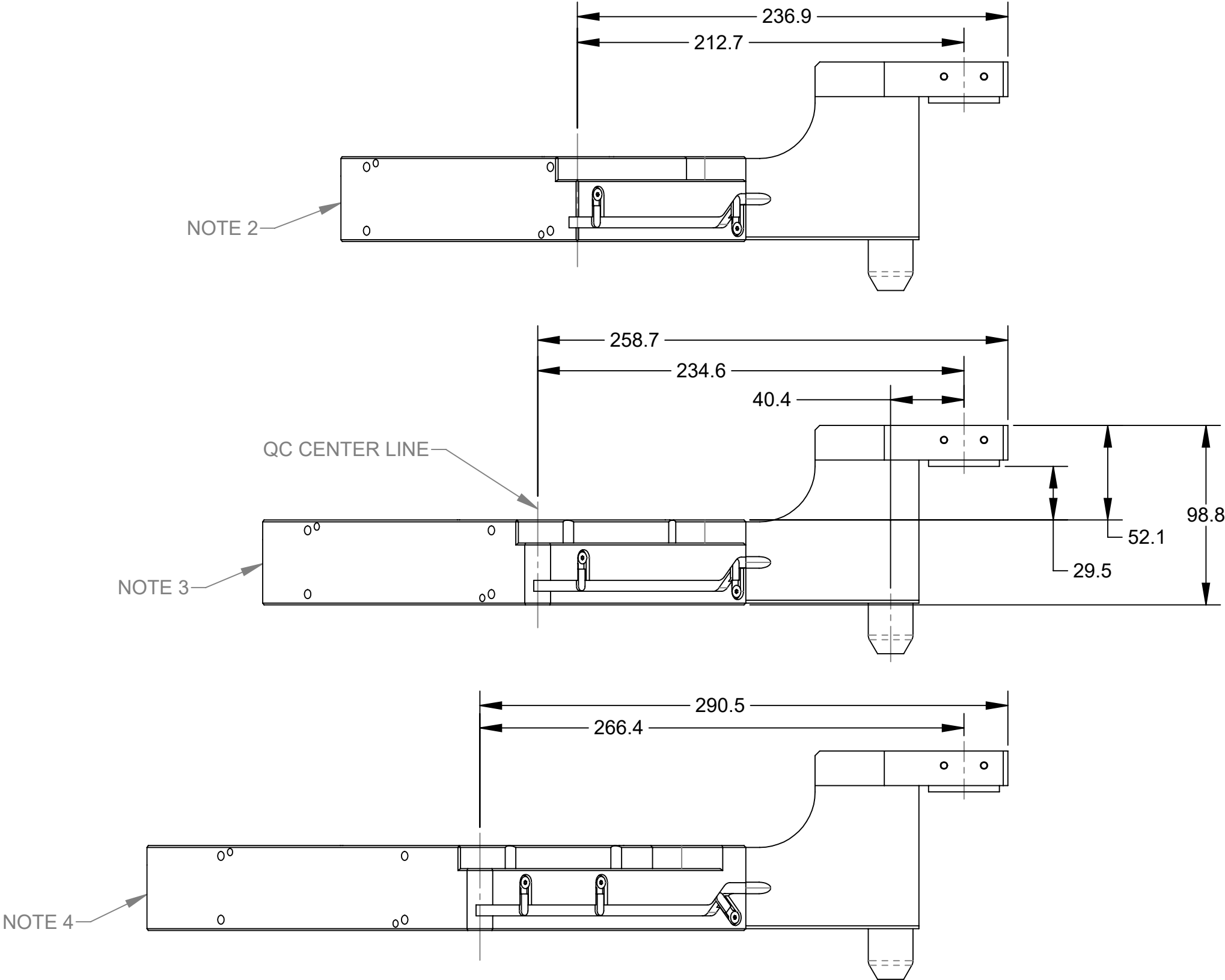


3rd ANGLE PROJECTION

1031 Goodworth Drive, Apex, NC 27539, USA
Tel: +1.919.772.0115 www.ati-ia.com
Fax: +1.919.772.8259 ISO 9001 Registered Company

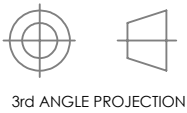
PROPERTY OF ATI INDUSTRIAL AUTOMATION, INC. NOT TO BE REPRODUCED IN ANY
MANNER EXCEPT ON ORDER OR WITH PRIOR WRITTEN AUTHORIZATION OF ATI.

DRAWN BY: D. THOMAS, 3/16/22		TITLE TSL8 PIN & BUSHING MODULE			
CHECKED BY: M. GALA, 7/26/22					
PROJECT # 180829-4		SCALE 1:2	SIZE B	DRAWING NUMBER 9630-20-TSL8-PB-11751	REVISION 02
SHEET 2 OF 3					



NOTES: UNLESS OTHERWISE SPECIFIED.

DO NOT SCALE DRAWING.
ALL DIMENSIONS ARE IN
MILLIMETERS.



3rd ANGLE PROJECTION

1031 Goodworth Drive, Apex, NC 27539, USA
Tel: +1.919.772.0115 www.ati-ia.com
Fax: +1.919.772.8259 ISO 9001 Registered Company

PROPERTY OF ATI INDUSTRIAL AUTOMATION, INC. NOT TO BE REPRODUCED IN ANY
MANNER EXCEPT ON ORDER OR WITH PRIOR WRITTEN AUTHORIZATION OF ATI.

DRAWN BY: D. THOMAS, 3/16/22		TITLE TSL8 PIN & BUSHING MODULE			
CHECKED BY: M. GALA, 7/26/22					
PROJECT # 180829-4	SHEET 3 OF 3	SCALE 1:2.5	SIZE B	DRAWING NUMBER 9630-20-TSL8-PB-11751	REVISION 02