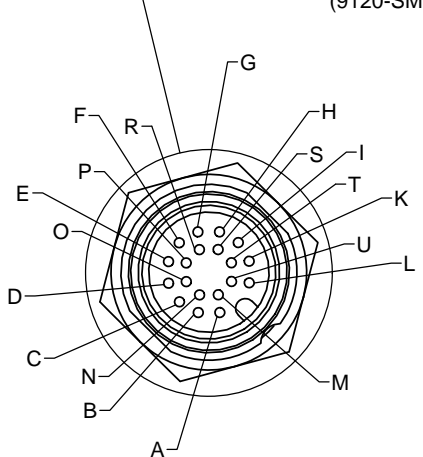
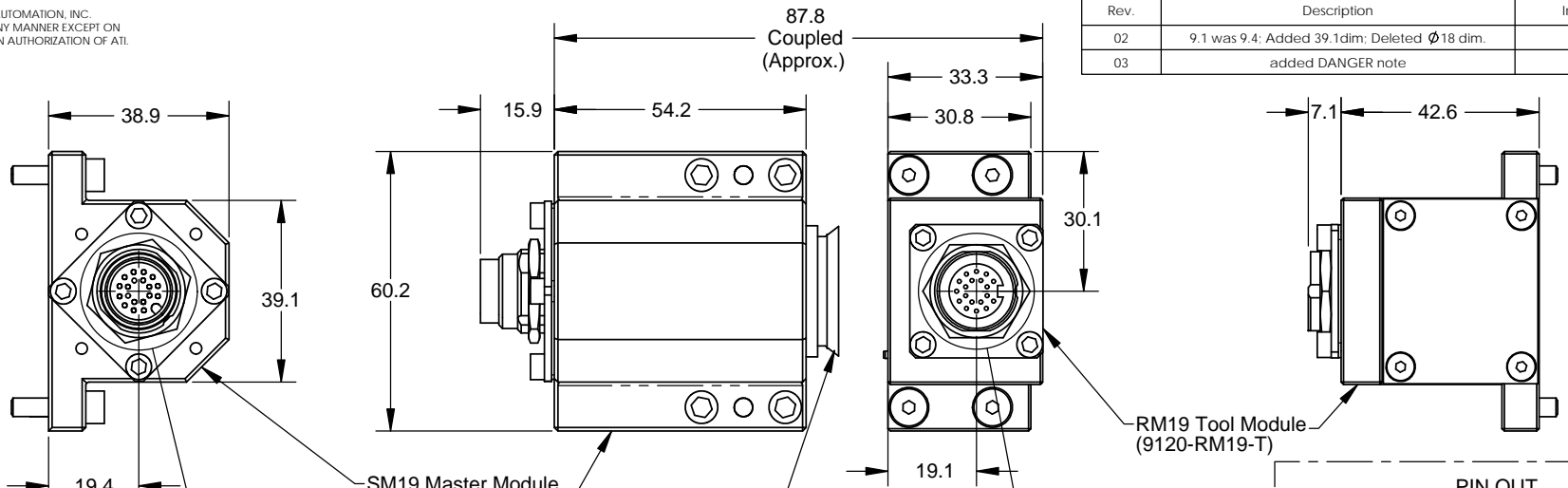


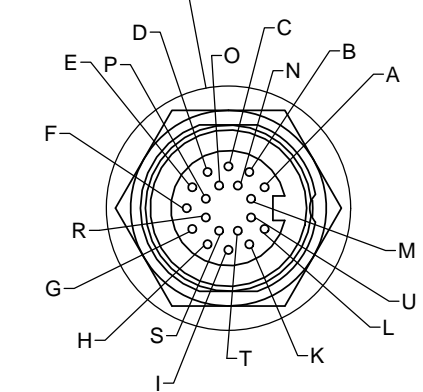
PROPERTY OF ATI INDUSTRIAL AUTOMATION, INC.
 NOT TO BE REPRODUCED IN ANY MANNER EXCEPT ON
 ORDER OR WITH PRIOR WRITTEN AUTHORIZATION OF ATI.

Rev.	Description	Initiator	Date
02	9.1 was 9.4; Added 39.1dim; Deleted \varnothing 18 dim.	DAW	12/29/2006
03	added DANGER note	DAW	3/6/2007



DETAIL A
SCALE 2 : 1

MASTER



DETAIL B
SCALE 2 : 1

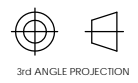
TOOL

PIN OUT	
SM19 MASTER Turck BSFD 19 Male Receptacle	RM19 TOOL Turck BKFD 19 Female Receptacle
A	A
B	B
C	C
D	D
E	E
F	F
G	G
H	H
I	I
K	K
L	L
M	M
N	N
O	O
P	P
R	R
S	S
T	T
U	U (SEE NOTE)
	GROUND

NOTES:

- 1) Pin "U" on the connectors is First-to-mate, Last-to-break at the Tool Changer interface. This pin is recommended for use as ground.
- 2) **DANGER!** - For electrical modules using > 60 VDC or 42 VAC, NO contact should be attempted before removing power. This especially includes separation or insertion of the mating connectors or any contact with the tool changer or its' components.

NOTES: UNLESS OTHERWISE SPECIFIED
 DO NOT SCALE DRAWING. DRAWN IN SOLIDWORKS.
 ALL DIMENSIONS ARE IN MILLIMETERS.



1031 Goodworth Drive, Apex, NC 27539, USA
 Tel: +1.919.772.0115 Email: info@ati-ia.com
 Fax: +1.919.772.8259 www.ati-ia.com
 ISO 9001 Registered Company

DRAWN BY: D. Wagner 12/5/06	TITLE: SM19 M, RM19 T Module Drawing		
CHECKED BY: DSS 12/5/06	SCALE: 1:1	SIZE: B	DRAWING NUMBER: 9630-20-SM19M RM19T-03
WEIGHT LBS: -----	PRODUCT RELEASE # 060919-2 DATE: SHEET 1 OF 1		
ASSEMBLY REF:			