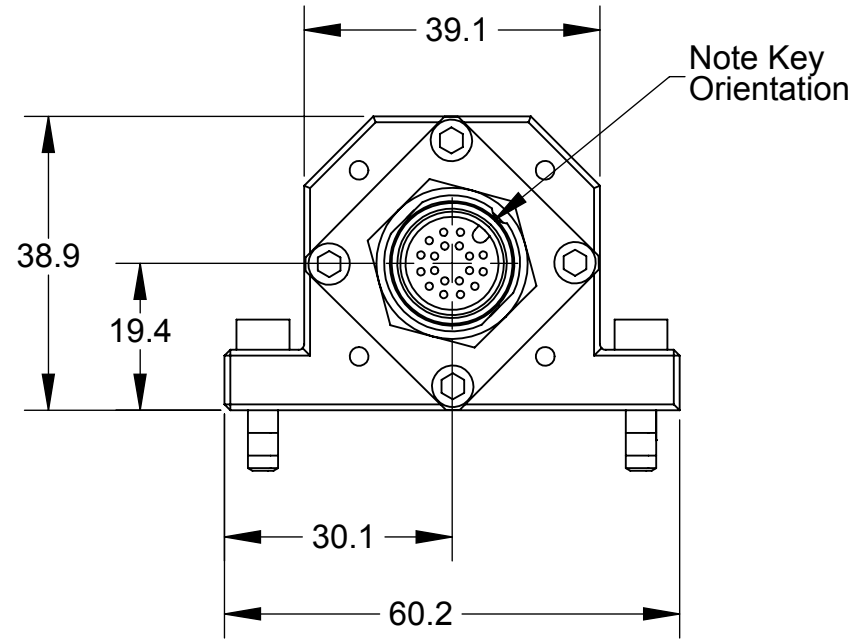


"DANGER!" - Electrical Shock Hazard

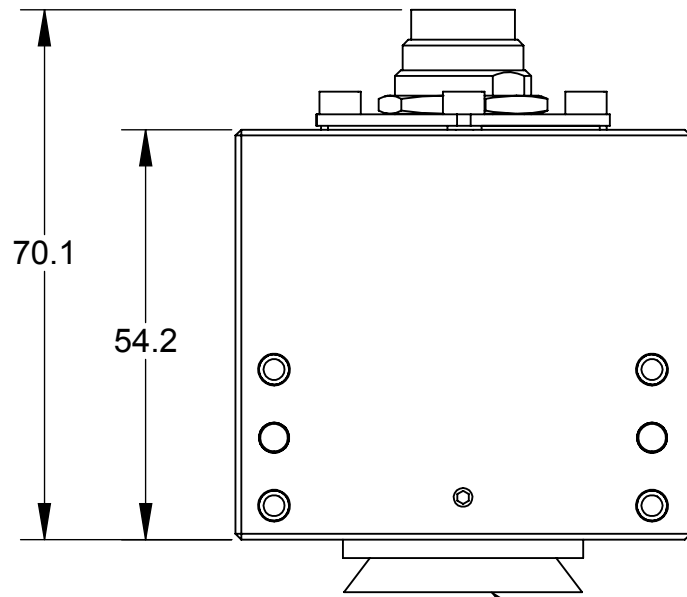
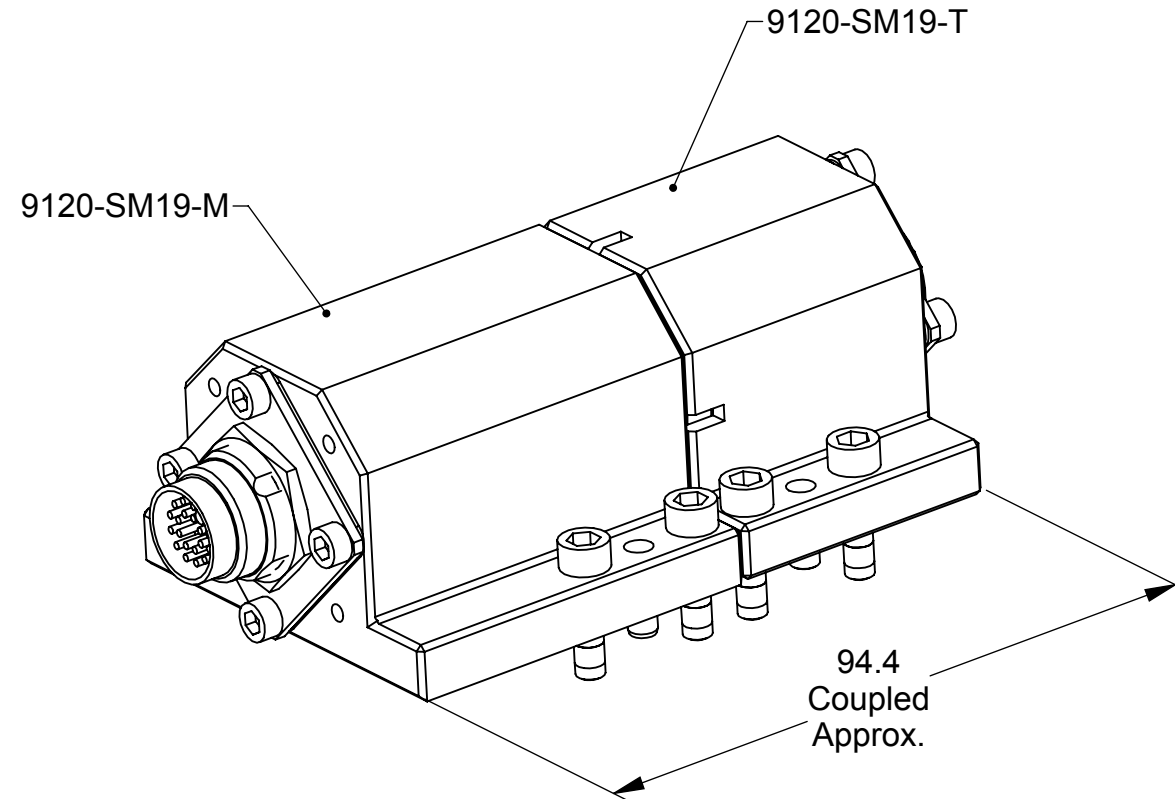
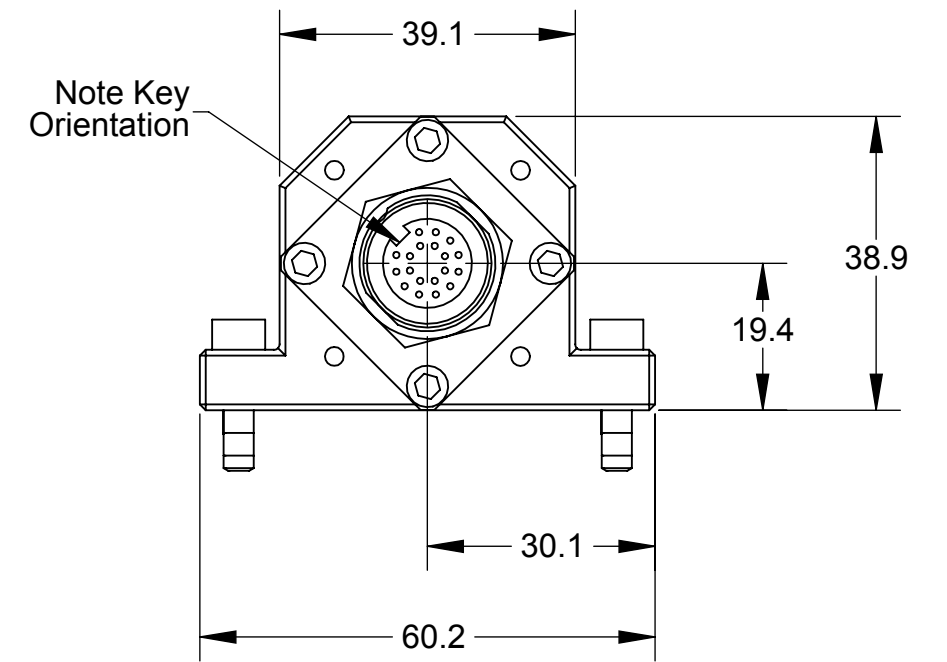
This module has a Voltage of 50V or greater, NO contact should be attempted before removing power. This especially includes separation or insertion of the mating connectors or any contact with the tool changer or its components.

Rev.	Description	Initiator	Date
04	Eco 13795; Tool side module housing updated to add dowel pattern.	LJH	9/14/2015

9120-SM19-M



9120-SM19-T



Serviceable Part
V-Ring Seal
4010-0000030-01

NOTES: UNLESS OTHERWISE SPECIFIED.

DO NOT SCALE DRAWING. ALL DIMENSIONS ARE IN MILLIMETERS.



3rd ANGLE PROJECTION



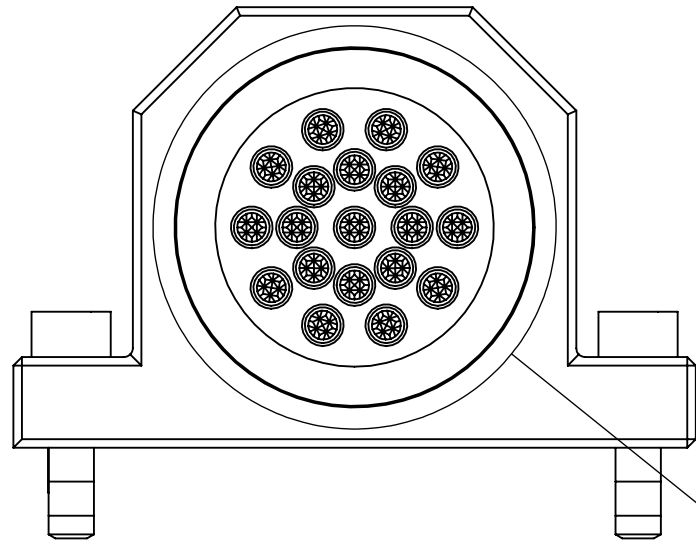
1031 Goodworth Drive, Apex, NC 27539, USA
Tel: +1.919.772.0115 Email: info@ati-ia.com
Fax: +1.919.772.8259 www.ati-ia.com
ISO 9001 Registered Company

PROPERTY OF ATI INDUSTRIAL AUTOMATION, INC. NOT TO BE REPRODUCED IN ANY MANNER EXCEPT ON ORDER OR WITH PRIOR WRITTEN AUTHORIZATION OF ATI.

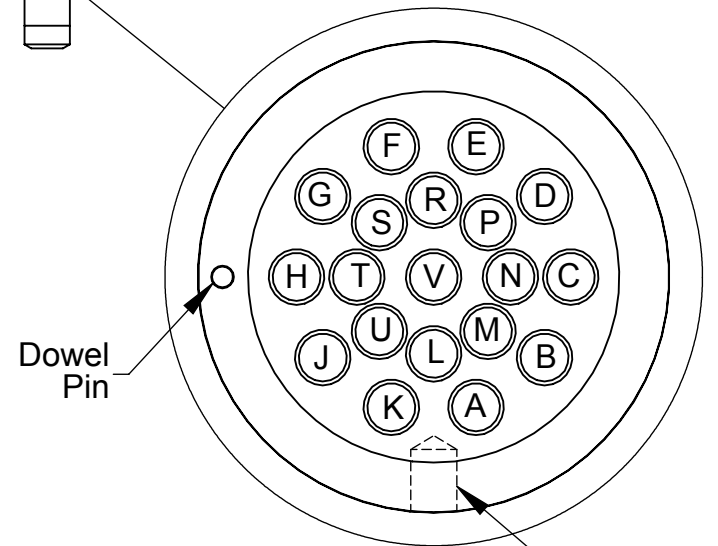
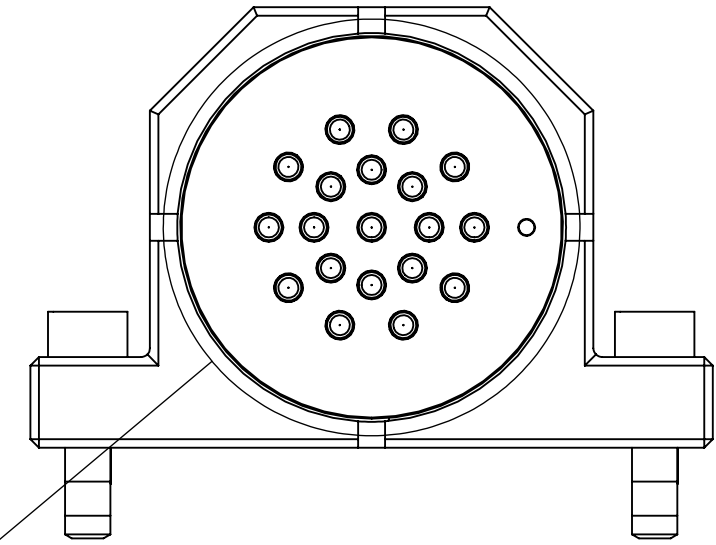
DRAWN BY: D. Wagner 12/28/06		TITLE	
CHECKED BY: DSS, 12/28/06		SM19 Module Drawing	
PROJECT # 06091902 SHEET 1 OF 3	SCALE 1:1	SIZE B	DRAWING NUMBER 9630-20-SM19
			REVISION 04

Rev.	Description	Initiator	Date
-	See Sheet1	-	-

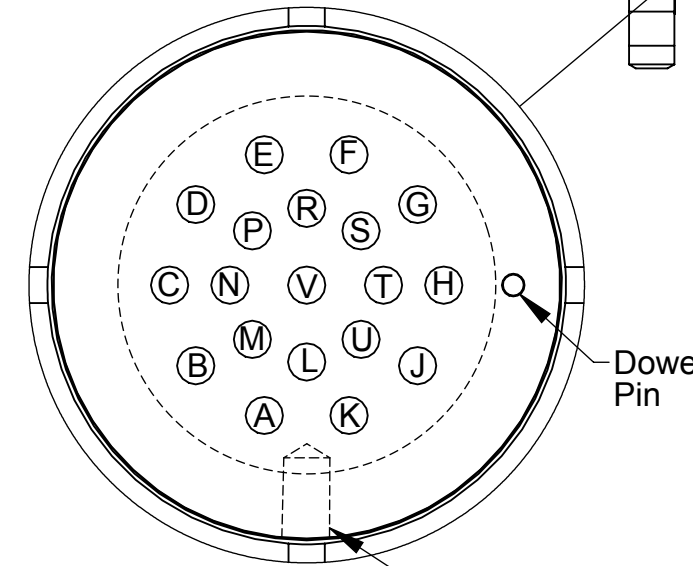
9120-SM19-M



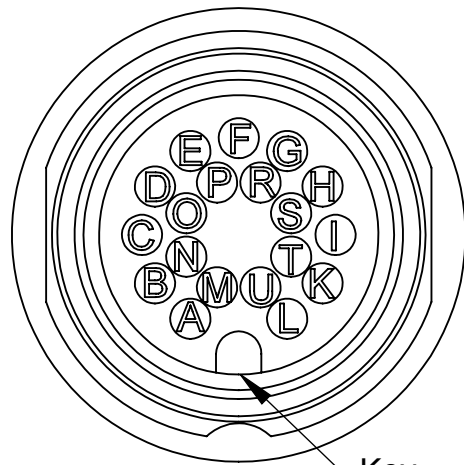
9120-SM19-T



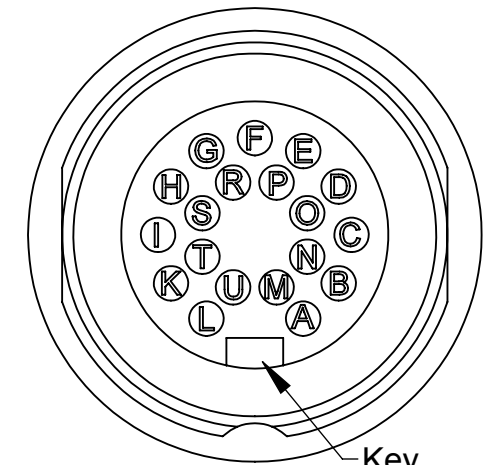
19-Pin Master
Pin Block
DETAIL A
SCALE 2 : 1



19-Pin Tool
Pin Block
DETAIL B
SCALE 2 : 1



Male M16 19-Pin Receptacle
Turck BSFD 19
Scale 3:1



Female M16 19-Pin Receptacle
Turck BSFD 19
Scale 3:1

NOTES: UNLESS OTHERWISE SPECIFIED.

DO NOT SCALE DRAWING. ALL DIMENSIONS ARE IN MILLIMETERS.



3rd ANGLE PROJECTION

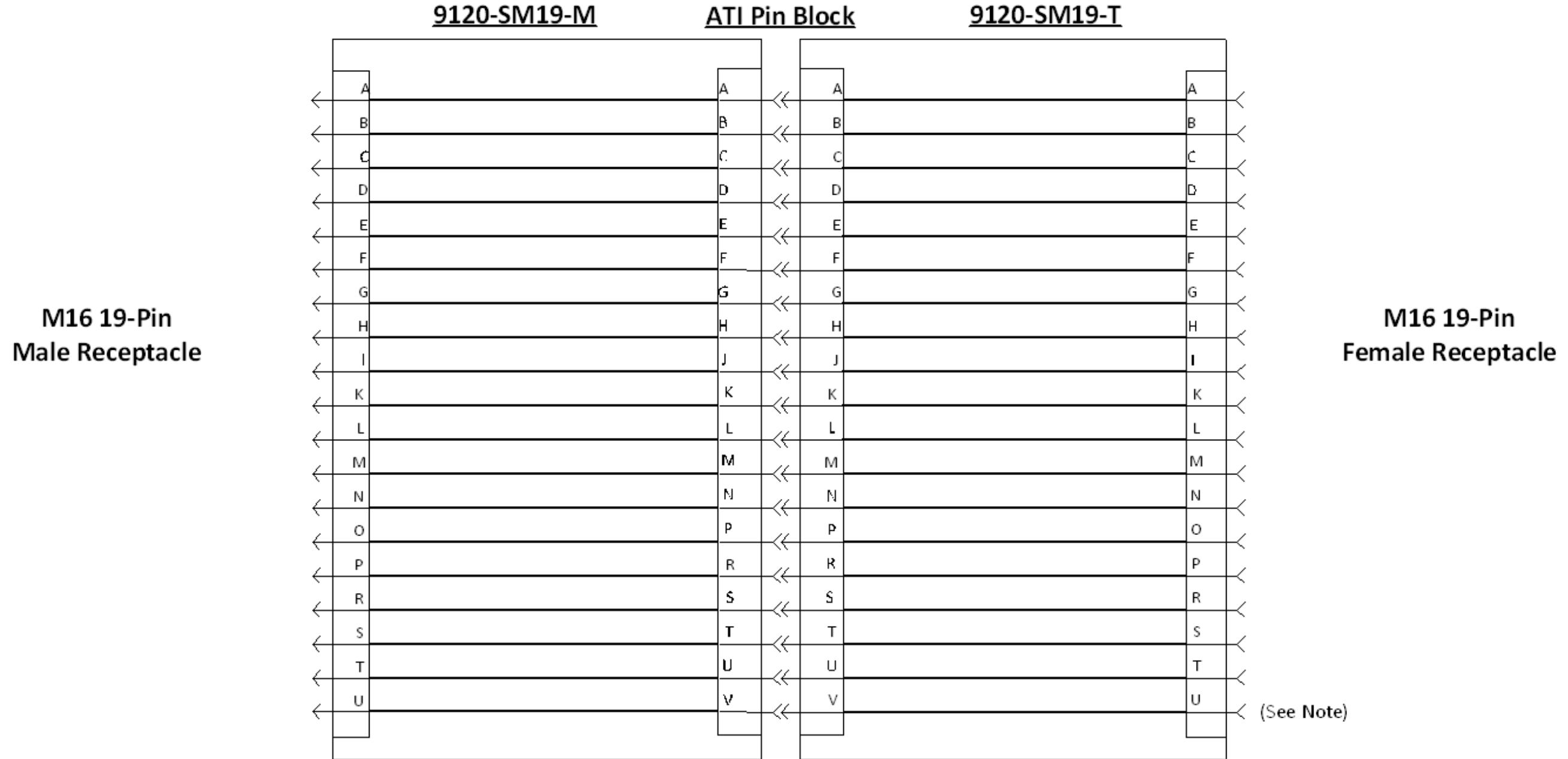


1031 Goodworth Drive, Apex, NC 27539, USA
Tel: +1.919.772.0115 Email: info@ati-ia.com
Fax: +1.919.772.8259 www.ati-ia.com
ISO 9001 Registered Company

PROPERTY OF ATI INDUSTRIAL AUTOMATION, INC. NOT TO BE REPRODUCED IN ANY MANNER EXCEPT ON ORDER OR WITH PRIOR WRITTEN AUTHORIZATION OF ATI.

DRAWN BY: D. Wagner 12/28/06		TITLE	
CHECKED BY: DSS, 12/28/06		SM19 Module Drawing	
PROJECT #	06091902	SHEET	2 OF 3
SCALE	3:2	SIZE	B
DRAWING NUMBER	9630-20-SM19		REVISION
			04

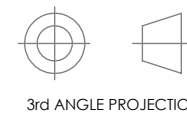
Rev.	Description	Initiator	Date
-	See Sheet1	-	-



- Notes:
- Pin "U" on the connectors is First-to-mate, Last-to-break at the Tool Changer interface. This pin is recommended for use as ground.

NOTES: UNLESS OTHERWISE SPECIFIED.

DO NOT SCALE DRAWING. ALL DIMENSIONS ARE IN MILLIMETERS.



1031 Goodworth Drive, Apex, NC 27539, USA
 Tel: +1.919.772.0115 Email: info@ati-ia.com
 Fax: +1.919.772.8259 www.ati-ia.com
 ISO 9001 Registered Company

PROPERTY OF ATI INDUSTRIAL AUTOMATION, INC. NOT TO BE REPRODUCED IN ANY MANNER EXCEPT ON ORDER OR WITH PRIOR WRITTEN AUTHORIZATION OF ATI.

DRAWN BY: D. Wagner 12/28/06		TITLE	
CHECKED BY: DSS, 12/28/06		SM19 Module Drawing	
PROJECT # 06091902 SHEET 3 OF 3	SCALE 2:1	SIZE B	DRAWING NUMBER 9630-20-SM19
			REVISION 04