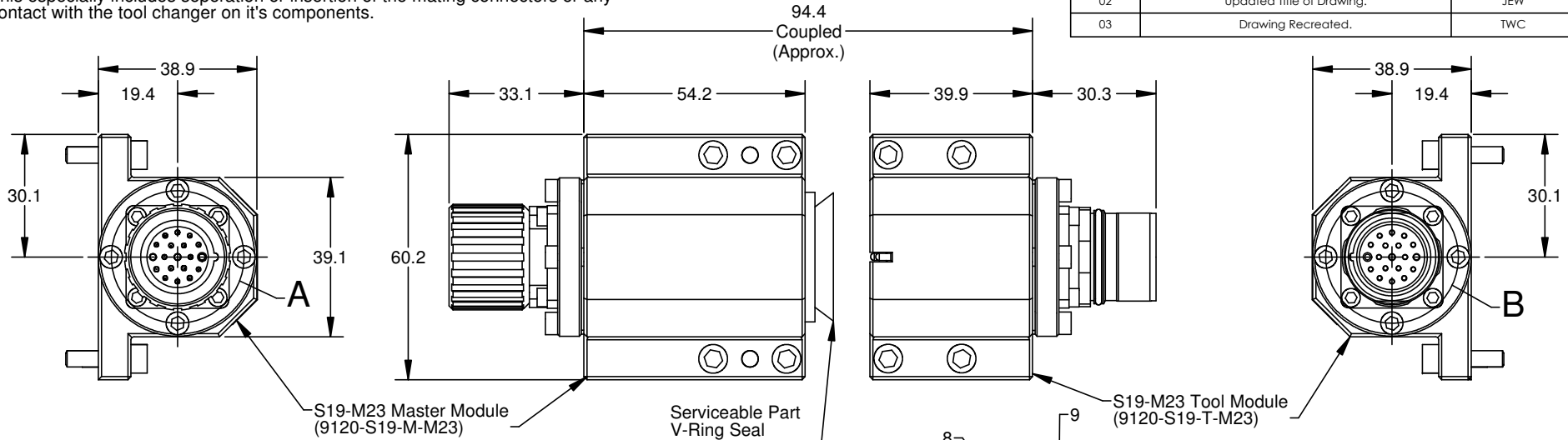
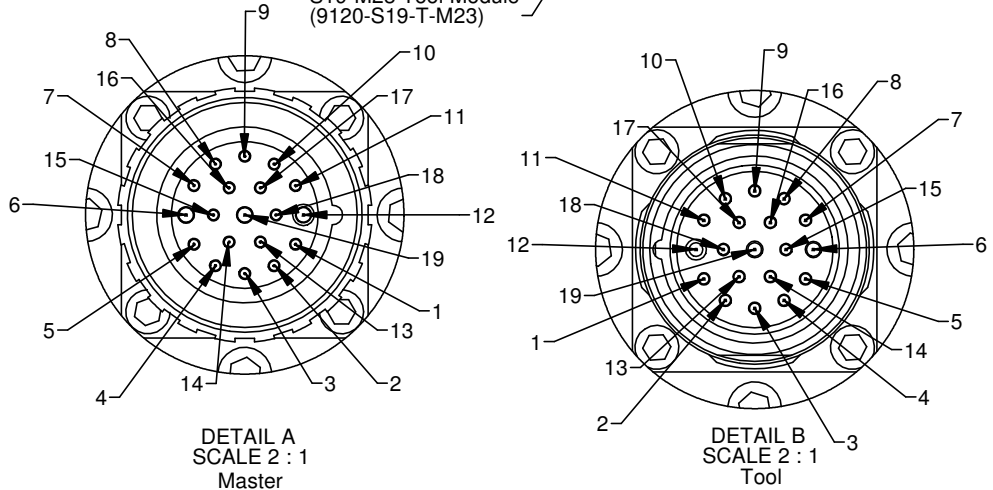


**DANGER!** - For electrical module using >60 VDC or 43 VAC, NO contact should be attempted before removing power. This especially includes separation or insertion of the mating connectors or any contact with the tool changer on it's components.

Rev.	Description	Initiator	Date
01	Initial Version.	DAW	5/2/2007
02	Updated Title of Drawing.	JEW	12/5/2007
03	Drawing Recreated.	TWC	12/14/2011



PINOUT	
S19 Master Connectors 19 Pin Male Receptacle	S19 Tool Connectors 19 Pin Female Receptacle
1	1
2	2
3	3
4	4
5	5
6	6
7	7
8	8
9	9
10	10
11	11
12	GROUND
13	13 (SEE NOTE 1)
14	14
15	15
16	16
17	17
18	18
19	19



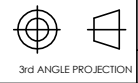
Notes:  
 1. Pin "12" on the Connectors in First-to-Mate, Last-to-Break at the Tool Changer interface. This pin is recommend for use as ground.

NOTES: UNLESS OTHERWISE SPECIFIED.  
 DO NOT SCALE DRAWING. ALL DIMENSIONS ARE IN MILLIMETERS.



1031 Goodworth Drive, Apex, NC 27539, USA  
 Tel: +1.919.772.0115 Email: info@ati-ia.com  
 Fax: +1.919.772.8259 www.ati-ia.com  
 ISO 9001 Registered Company

PROPERTY OF ATI INDUSTRIAL AUTOMATION, INC. NOT TO BE REPRODUCED IN ANY MANNER EXCEPT ON ORDER OR WITH PRIOR WRITTEN AUTHORIZATION OF ATI.



DRAWN BY: T. Carter 05/02/2007	TITLE: S19 w/M23 Connectors Module Drawing
CHECKED BY: P. Luczka 12/16/2011	
PROJECT # 070501-2 SHEET 1 OF 1	SCALE: 1:1 SIZE: B DRAWING NUMBER: 9630-20-S19-M23 REVISION: 03