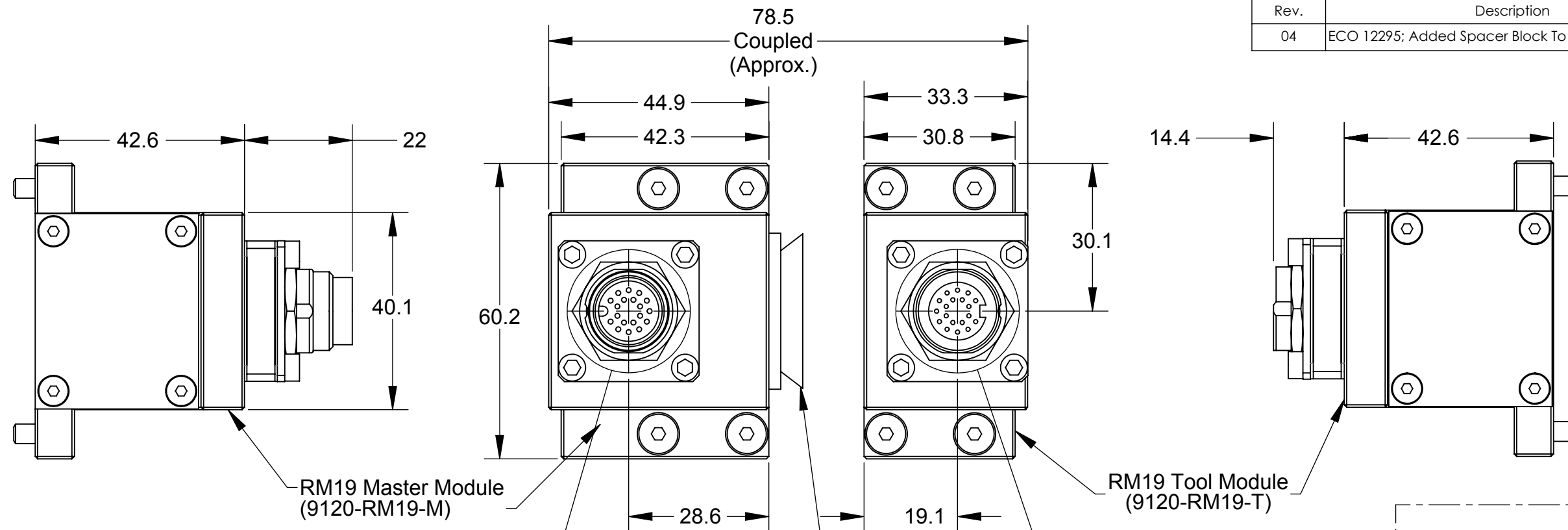
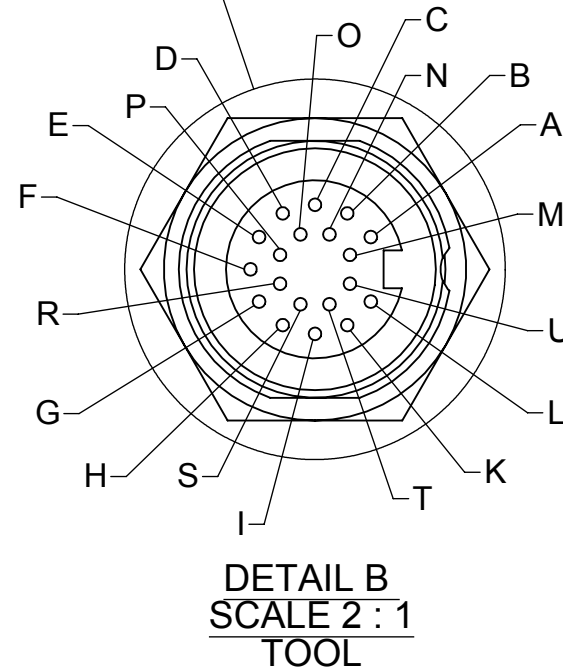
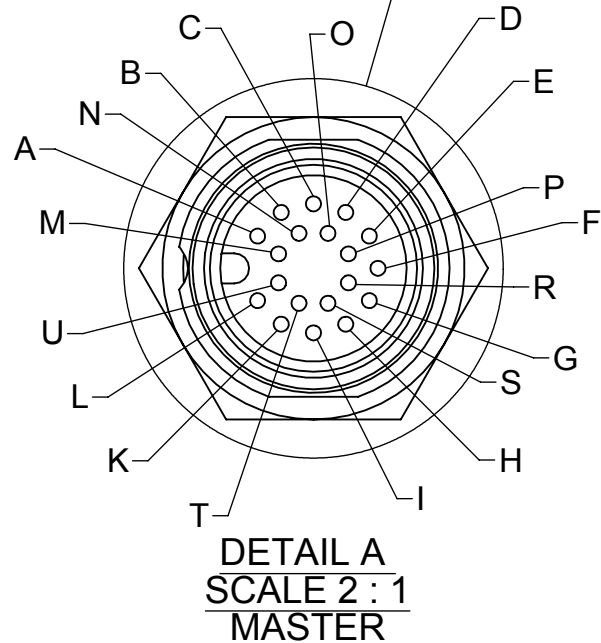


Rev.	Description	Initiator	Date
04	ECO 12295; Added Spacer Block To Assembly	TBC	11/18/2014



Serviceable Part  
V-Ring Seal  
4010-0000030-01



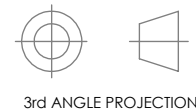
PIN OUT	
RM19 MASTER Turck BSFD 19 Male Receptacle	RM19 TOOL Turck BKFD 19 Female Receptacle
A	A
B	B
C	C
D	D
E	E
F	F
G	G
H	H
I	I
J	J
K	K
L	L
M	M
N	N
O	O
P	P
Q	Q
R	R
S	S
T	T
U	U (SEE NOTE)
	GROUND

**NOTES:**

- 1) Pin "U" on the connectors is First-to-mate, Last-to-break at the Tool Changer interface. This pin is recommended for use as ground.
- 2) DANGER! - For electrical modules using > 60 VDC or 42 VAC, NO contact should be attempted before removing power. This especially includes separation or insertion of the mating connectors or any contact with the tool changer or its' components.

NOTES: UNLESS OTHERWISE SPECIFIED.

DO NOT SCALE DRAWING. ALL DIMENSIONS ARE IN MILLIMETERS.



1031 Goodworth Drive, Apex, NC 27539, USA  
Tel: +1.919.772.0115 Email: info@ati-ia.com  
Fax: +1.919.772.8259 www.ati-ia.com  
ISO 9001 Registered Company

PROPERTY OF ATI INDUSTRIAL AUTOMATION, INC. NOT TO BE REPRODUCED IN ANY MANNER EXCEPT ON ORDER OR WITH PRIOR WRITTEN AUTHORIZATION OF ATI.

DRAWN BY: D. Wagner, 12/26/06		TITLE	
CHECKED BY: DSS, 12/28/06		19 Pin Master Electrical Module with M16 Connector	
PROJECT #	060919-2	SHEET	1 OF 1
SCALE	1:1	SIZE	B
DRAWING NUMBER	9630-20-RM19	REVISION	04