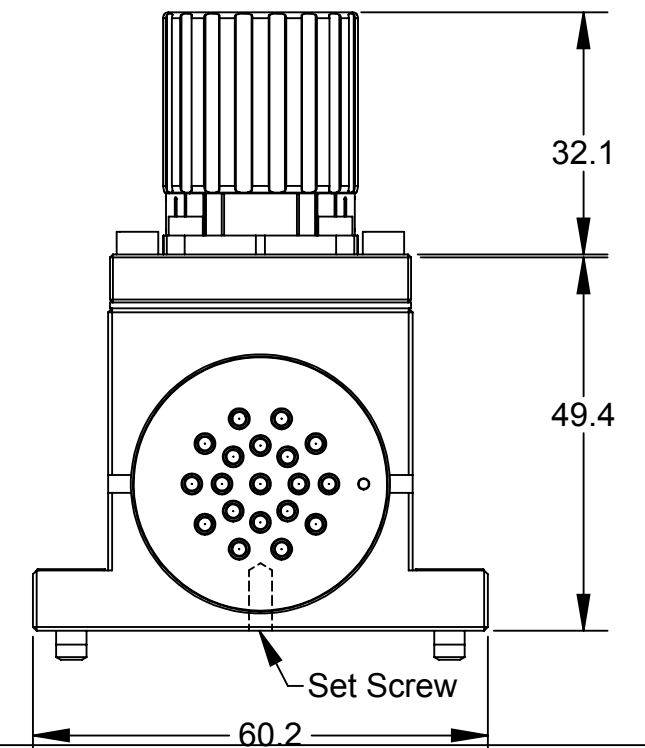
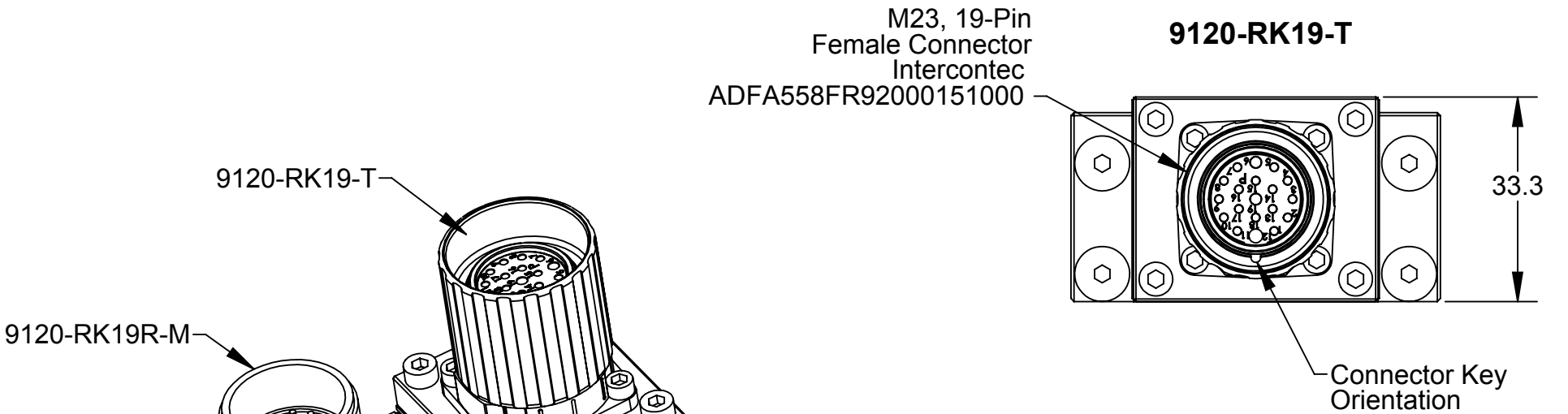
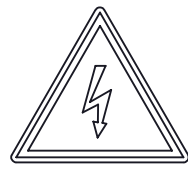


Rev.	Description	Initiator	Date
05	Eco 17874; Changed Tool Side Connector Height Dimension from 26.1 to 32.1; Changed Female Connector Manufacturing Part Number from RC-1RS1N12Y300 to Intercontec ADFA558FR92000151000.	CF	4/18/2019



"DANGER!" - Electrical Shock Hazard



This module has a Voltage of 50V or greater, NO contact should be attempted before removing power. This especially includes separation or insertion of the mating connectors or any contact with the tool changer or its components.

- Notes:
1. Module Electrical rating: 3A / 150V
 2. Customer approval of electrical schematic is required.
 3. Customer is to approve connector selection and orientation.
 4. See sheet 3 for module wiring schematic.
 5. See Sheet 2 for Customer Interface information.

NOTES: UNLESS OTHERWISE SPECIFIED.

DO NOT SCALE DRAWING. ALL DIMENSIONS ARE IN MILLIMETERS.



3rd ANGLE PROJECTION

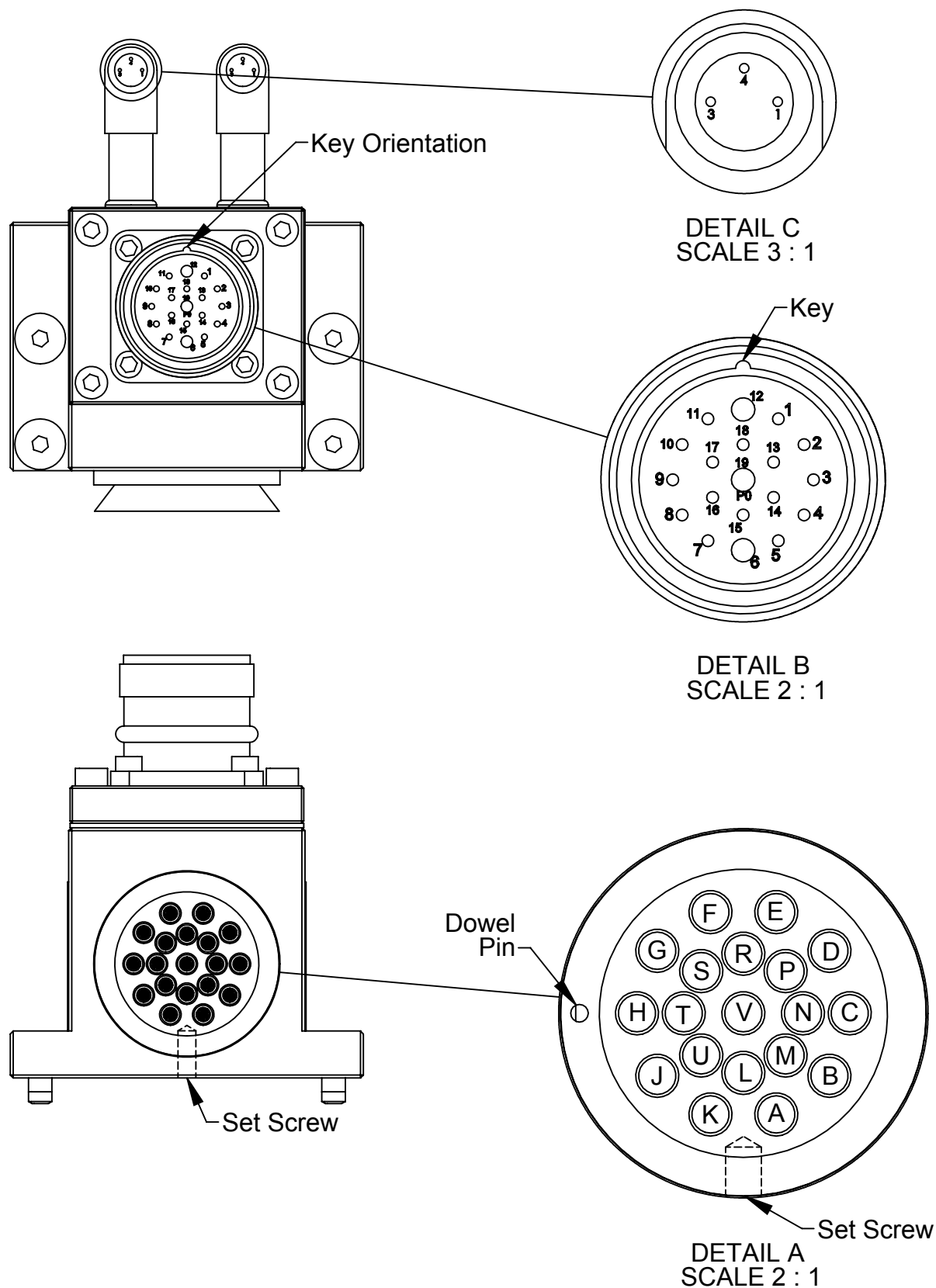


1031 Goodworth Drive, Apex, NC 27539, USA
 Tel: +1.919.772.0115 Email: info@ati-ia.com
 Fax: +1.919.772.8259 www.ati-ia.com
 ISO 9001 Registered Company

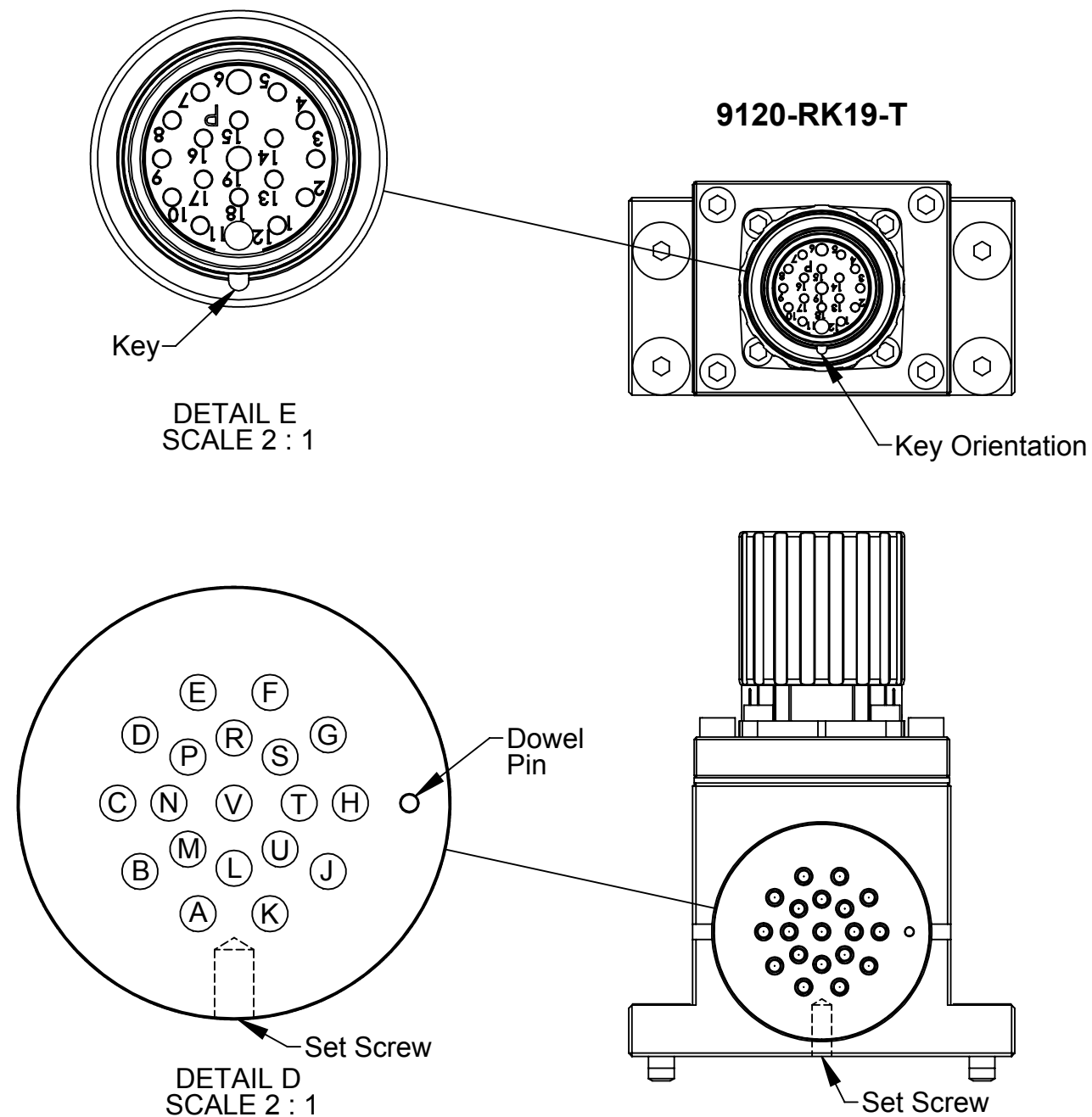
PROPERTY OF ATI INDUSTRIAL AUTOMATION, INC. NOT TO BE REPRODUCED IN ANY MANNER EXCEPT ON ORDER OR WITH PRIOR WRITTEN AUTHORIZATION OF ATI.

DRAWN BY: P.Luczka, 5/8/14		TITLE	
CHECKED BY: A.Takla, 5/12/14 M.Hallmark, 5/14/14		RK19R-M / RK19-T Electrical Module Customer Drawing	
PROJECT # 140506-1	SHEET 1 OF 3	SCALE 1:1	SIZE B
DRAWING NUMBER 9630-20-RK19RM RK19T		REVISION 06	

9120-RK19R-M

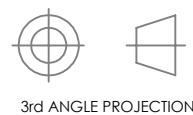


9120-RK19-T



NOTES: UNLESS OTHERWISE SPECIFIED.

DO NOT SCALE DRAWING. ALL DIMENSIONS ARE IN MILLIMETERS.



1031 Goodworth Drive, Apex, NC 27539, USA
 Tel: +1.919.772.0115 Email: info@ati-ia.com
 Fax: +1.919.772.8259 www.ati-ia.com
 ISO 9001 Registered Company

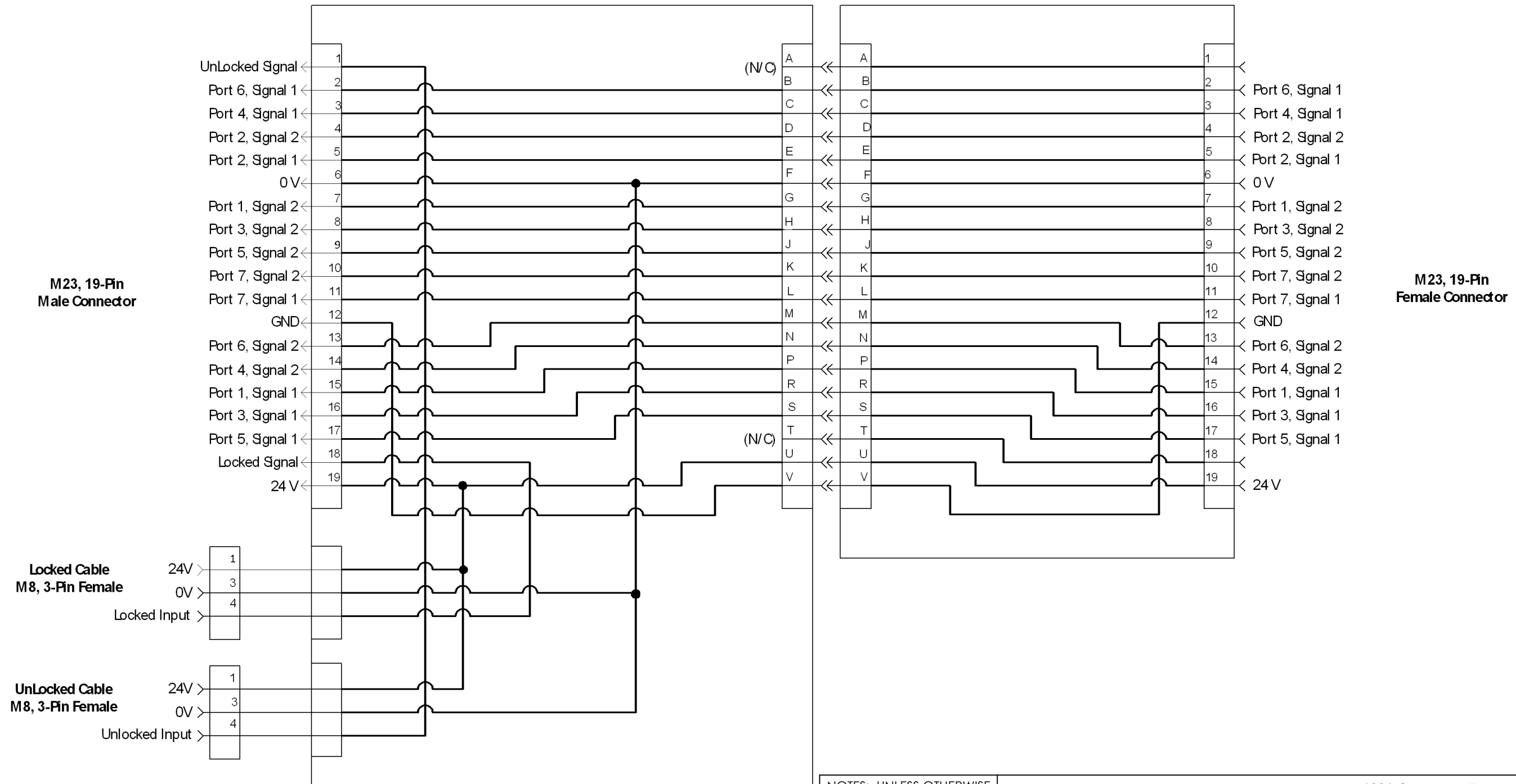
PROPERTY OF ATI INDUSTRIAL AUTOMATION, INC. NOT TO BE REPRODUCED IN ANY MANNER EXCEPT ON ORDER OR WITH PRIOR WRITTEN AUTHORIZATION OF ATI.

DRAWN BY: P.Luczka, 5/8/14		TITLE	
CHECKED BY: A.Takla, 5/12/14 M.Hallmark, 5/14/14		RK19R-M / RK19-T Electrical Module Customer Drawing	
PROJECT # 140506-1	SHEET 2 OF 3	SCALE 1:1	SIZE B
		DRAWING NUMBER	REVISION
		9630-20-RK19RM RK19T	06

9120-RK19R-M

ATI 19-Pin
Block

9120-RK19-T



Notes:

- ATI pin "V" is "First-To-Mate and Last-To-Break" contact, recommended as ground.

NOTES: UNLESS OTHERWISE SPECIFIED.

DO NOT SCALE DRAWING. ALL DIMENSIONS ARE IN MILLIMETERS.



3rd ANGLE PROJECTION



1031 Goodworth Drive, Apex, NC 27539, USA
 Tel: +1.919.772.0115 Email: info@ati-ia.com
 Fax: +1.919.772.8259 www.ati-ia.com
 ISO 9001 Registered Company

PROPERTY OF ATI INDUSTRIAL AUTOMATION, INC. NOT TO BE REPRODUCED IN ANY MANNER EXCEPT ON ORDER OR WITH PRIOR WRITTEN AUTHORIZATION OF ATI.

DRAWN BY: P.Luczka, 5/8/14		TITLE	
CHECKED BY: A.Takla, 5/12/14 M.Hallmark, 5/14/14		RK19R-M / RK19-T Electrical Module Customer Drawing	
PROJECT #	140506-1	SHEET	OF 3
SCALE	1:1	SIZE	B
DRAWING NUMBER	9630-20-RK19RM RK19T		REVISION
			06