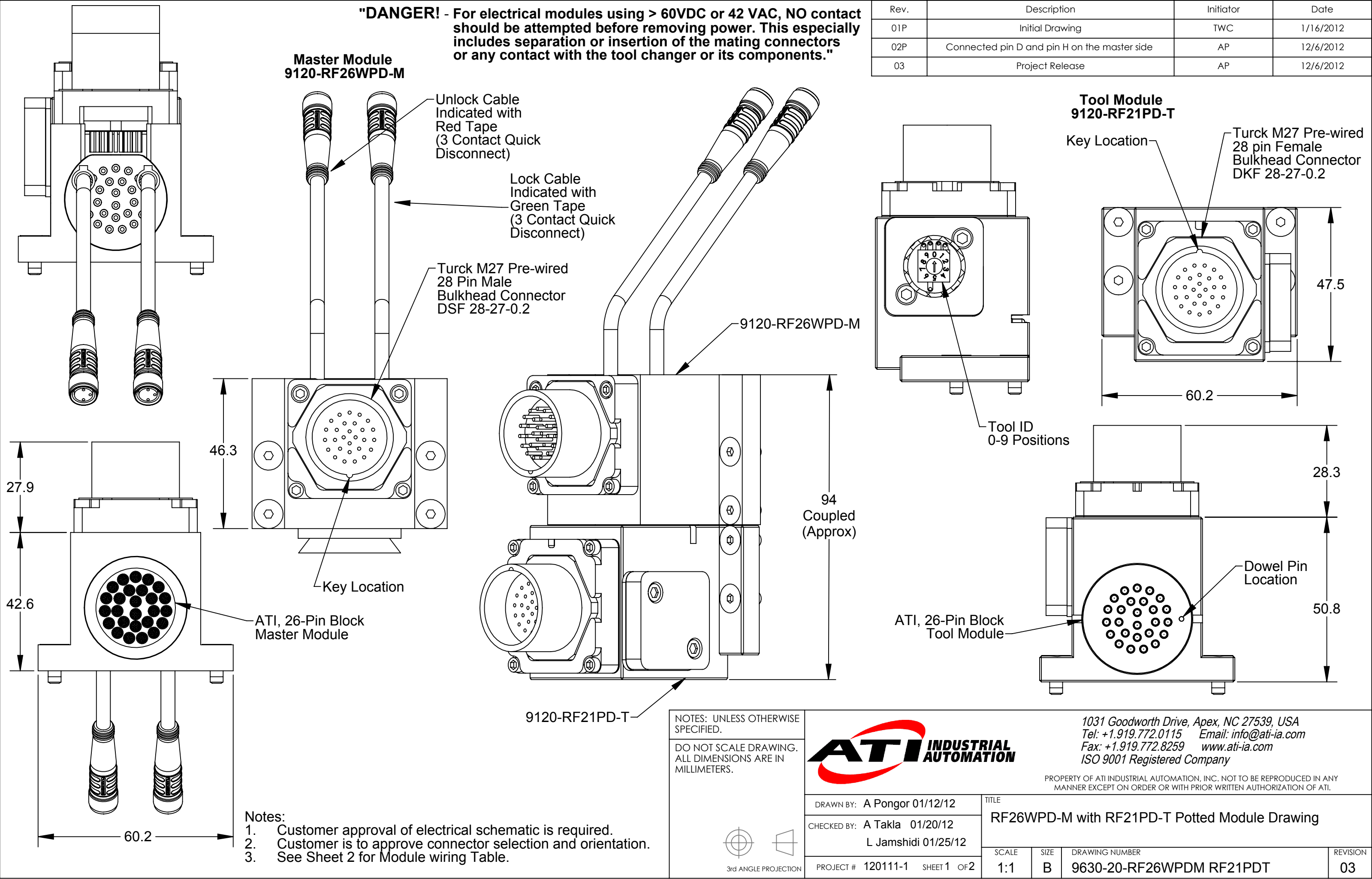


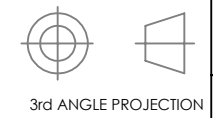
"DANGER! - For electrical modules using > 60VDC or 42 VAC, NO contact should be attempted before removing power. This especially includes separation or insertion of the mating connectors or any contact with the tool changer or its components."

| Rev. | Description | Initiator | Date |
|------|--|-----------|-----------|
| 01P | Initial Drawing | TWC | 1/16/2012 |
| 02P | Connected pin D and pin H on the master side | AP | 12/6/2012 |
| 03 | Project Release | AP | 12/6/2012 |



- Notes:
1. Customer approval of electrical schematic is required.
 2. Customer is to approve connector selection and orientation.
 3. See Sheet 2 for Module wiring Table.

NOTES: UNLESS OTHERWISE SPECIFIED.
DO NOT SCALE DRAWING. ALL DIMENSIONS ARE IN MILLIMETERS.

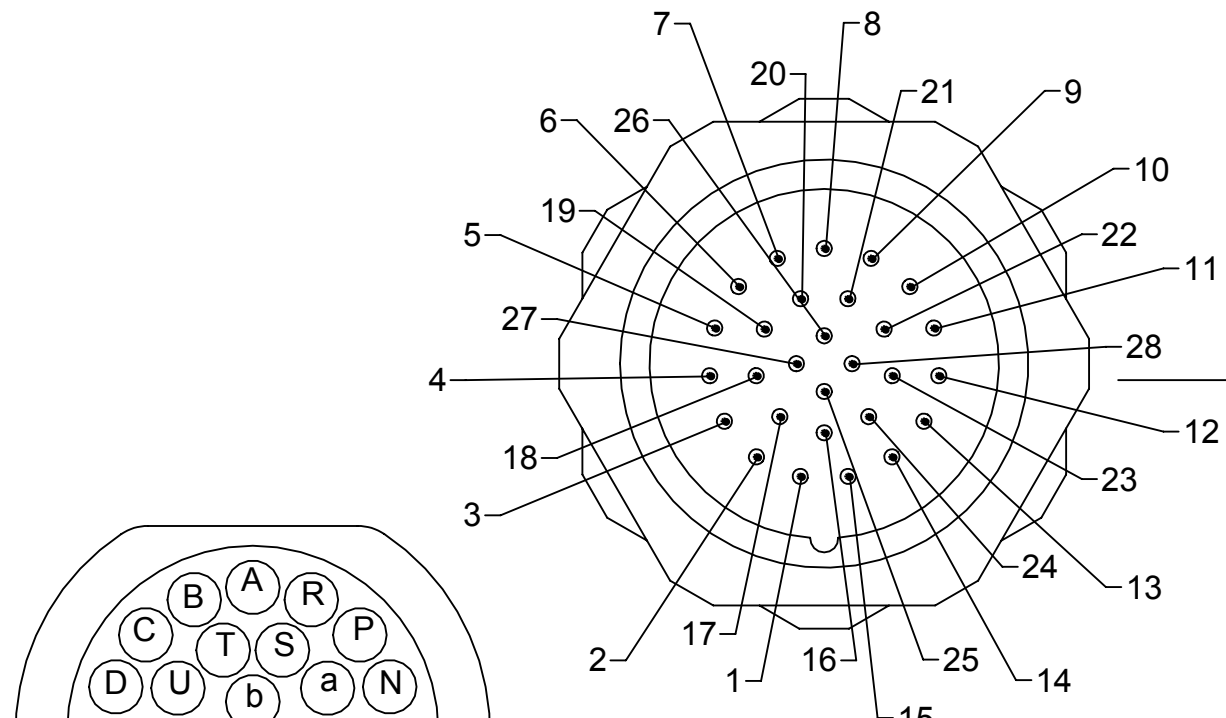


1031 Goodworth Drive, Apex, NC 27539, USA
Tel: +1.919.772.0115 Email: info@ati-ia.com
Fax: +1.919.772.8259 www.ati-ia.com
ISO 9001 Registered Company

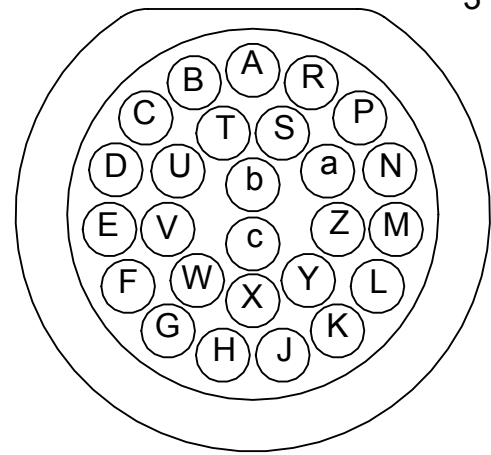
PROPERTY OF ATI INDUSTRIAL AUTOMATION, INC. NOT TO BE REPRODUCED IN ANY MANNER EXCEPT ON ORDER OR WITH PRIOR WRITTEN AUTHORIZATION OF ATI.

| | | | |
|---|----------|---|------|
| DRAWN BY: A Pongor 01/12/12 | | TITLE | |
| CHECKED BY: A Takla 01/20/12 L Jamshidi 01/25/12 | | RF26WPD-M with RF21PD-T Potted Module Drawing | |
| PROJECT # | 120111-1 | SHEET | OF 2 |
| SCALE | 1:1 | SIZE | B |
| DRAWING NUMBER | | REVISION | |
| 9630-20-RF26WPDM RF21PDT | | 03 | |

ELECTRICAL SCHEMATIC



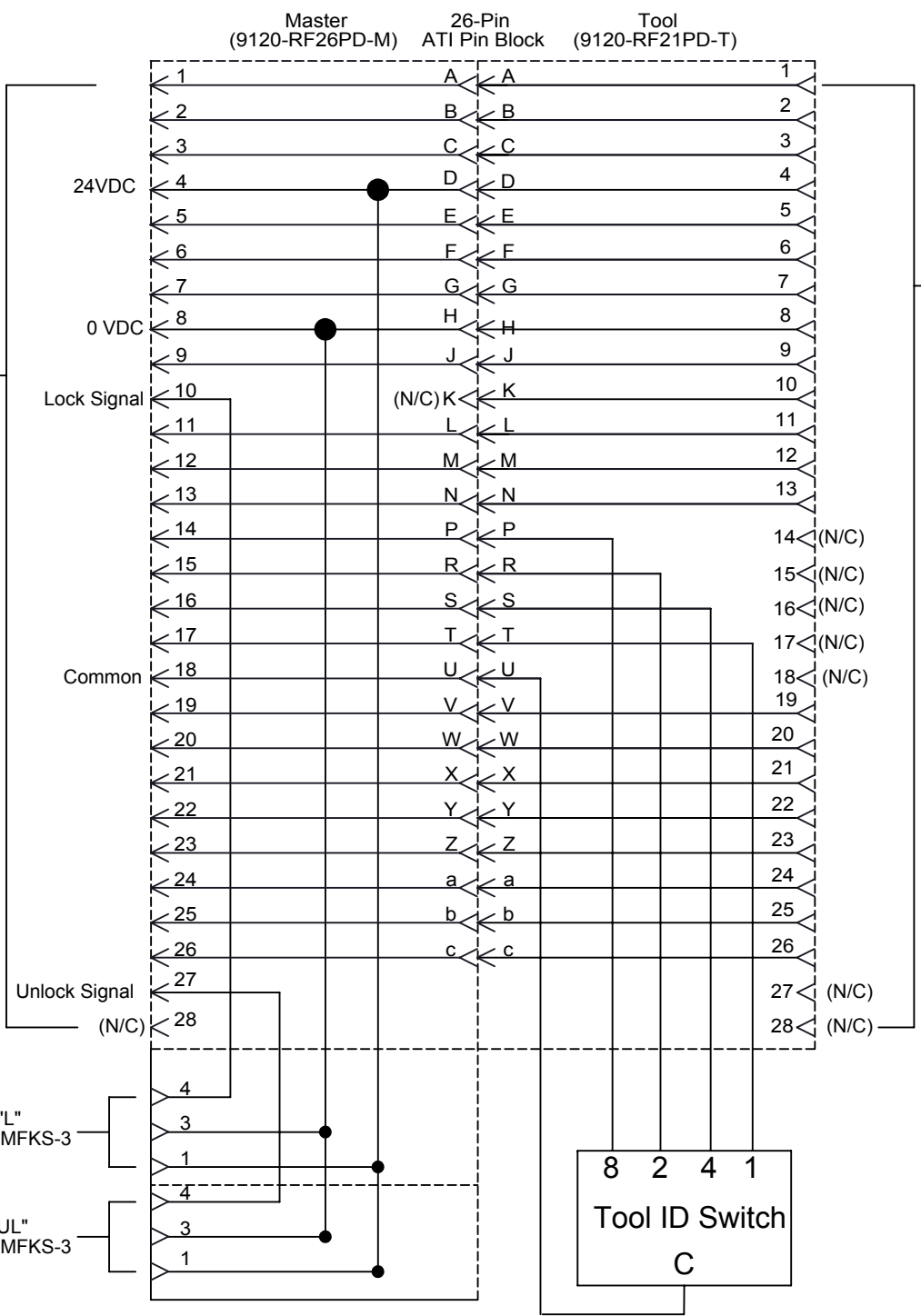
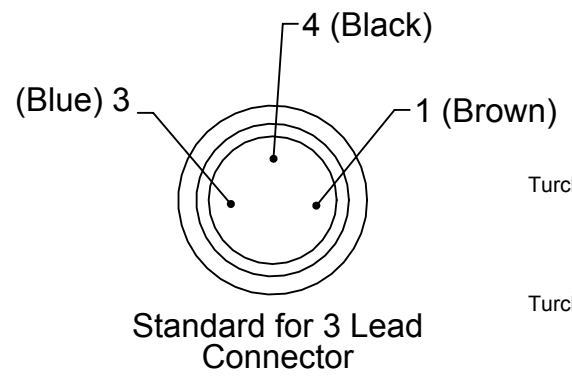
Turck M27 Pre-wired
28 Pin Male
Bulkhead Connector
DSF 28-27-0.2



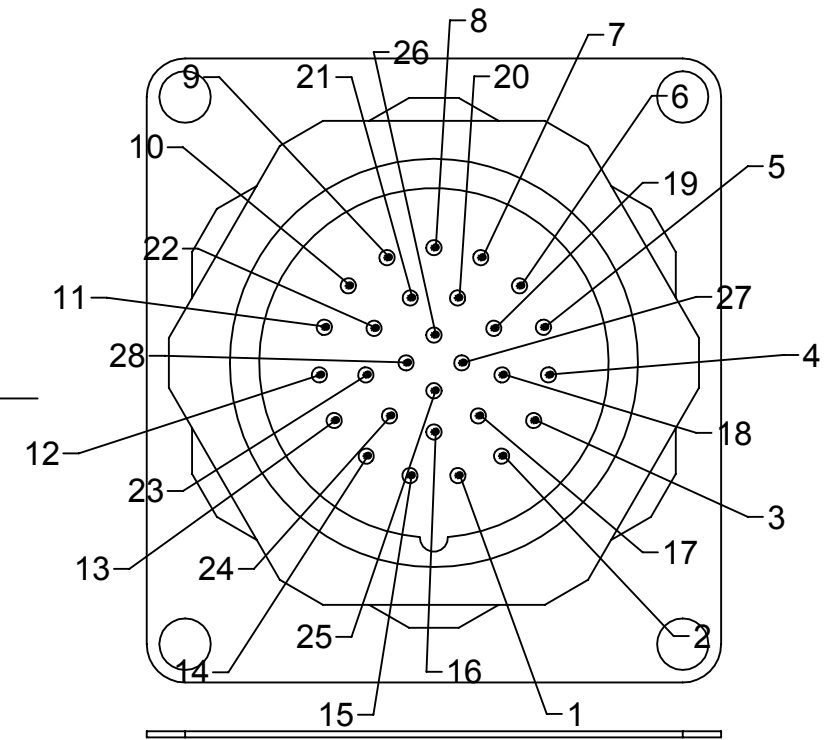
ATI, 26-Pin Block
Master Module
Face Side

| Switch Position | Pin P | Pin S | Pin R | Pin T | Pin U |
|-----------------|-------|-------|-------|-------|-------|
| 0 | 0 | 0 | 0 | 0 | |
| 1 | 0 | 0 | 0 | 1 | C |
| 2 | 0 | 0 | 1 | 0 | O |
| 3 | 0 | 0 | 1 | 1 | M |
| 4 | 0 | 1 | 0 | 0 | M |
| 5 | 0 | 1 | 0 | 1 | O |
| 6 | 0 | 1 | 1 | 0 | N |
| 7 | 0 | 1 | 1 | 1 | |
| 8 | 1 | 0 | 0 | 0 | |
| 9 | 1 | 0 | 0 | 1 | |

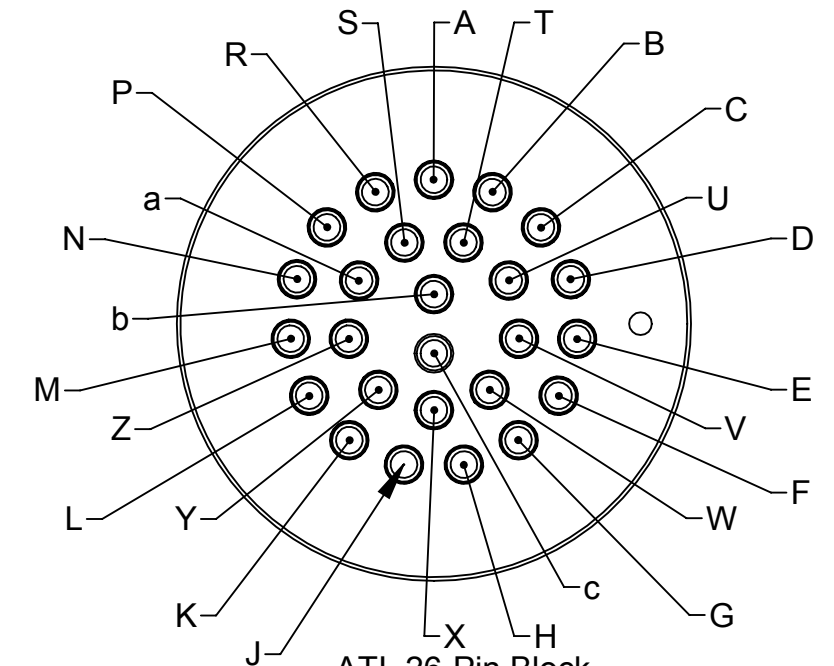
Binary o/p of Selector Switch
(10) Unique Settings



Pin 26: 0 VDC (recommended) (See Note 1)
Pin 18: 5-50 VDC 100mA Max (Tool ID) (See Note 3)



Turck M27 Pre-wired
28 pin Female
Bulkhead Connector
DKF 28-27-0.2



ATI, 26-Pin Block
Tool Module
Face Side

NOTES: UNLESS OTHERWISE SPECIFIED.

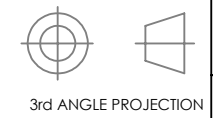
DO NOT SCALE DRAWING. ALL DIMENSIONS ARE IN MILLIMETERS.



1031 Goodworth Drive, Apex, NC 27539, USA
Tel: +1.919.772.0115 Email: info@ati-ia.com
Fax: +1.919.772.8259 www.ati-ia.com
ISO 9001 Registered Company

PROPERTY OF ATI INDUSTRIAL AUTOMATION, INC. NOT TO BE REPRODUCED IN ANY MANNER EXCEPT ON ORDER OR WITH PRIOR WRITTEN AUTHORIZATION OF ATI.

- Notes:
- Pin "26" on connector is First-To-Mate and Last-To-Break at the tool changer interface. This pin is recommended for use as a ground.
 - Pin "c" on the ATI pin block is first-To-Mate and Last-To-Break, recommended as ground pin.
 - Pin "18" is common for tool ID (5-50 VDC 100mA Max).



| | | | |
|---|--------------|---|--------|
| DRAWN BY: A Pongor 01/12/12 | | TITLE | |
| CHECKED BY: A Takla 01/20/12 L Jamshidi 01/25/12 | | RF26WPD-M with RF21PD-T Potted Module Drawing | |
| PROJECT # 120111-1 | SHEET 2 OF 2 | SCALE 1:1 | SIZE B |
| DRAWING NUMBER 9630-20-RF26WPDM RF21PDT | | REVISION 03 | |