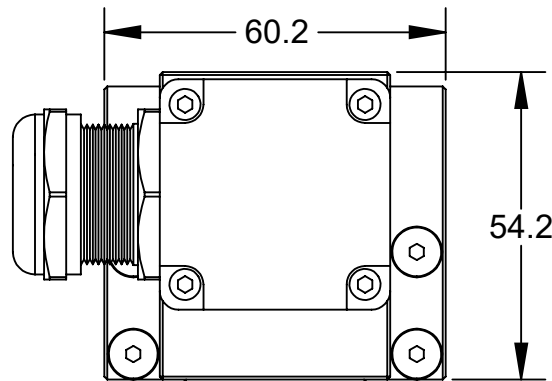


" DANGER!" - Electrical Shock Hazard

This module has a Voltage of 50V or greater, NO contact should be attempted before removing power. This especially includes separation or insertion of the mating connectors or any contact with the tool changer or its components."

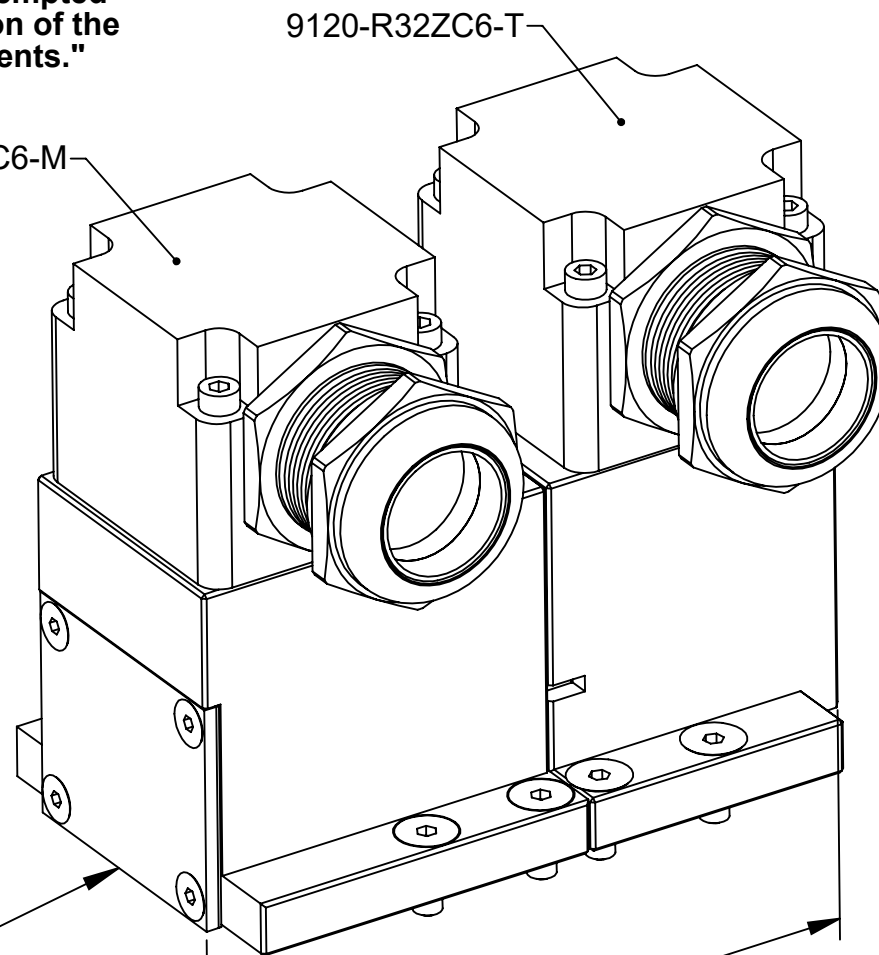
Rev.	Description	Initiator	Date
05	Eco 19433; Removed Blank Cover Plate. Added Electrical Shock Note.	CF	10/19/2020

**9120-R32ZC6-M
Master Module**

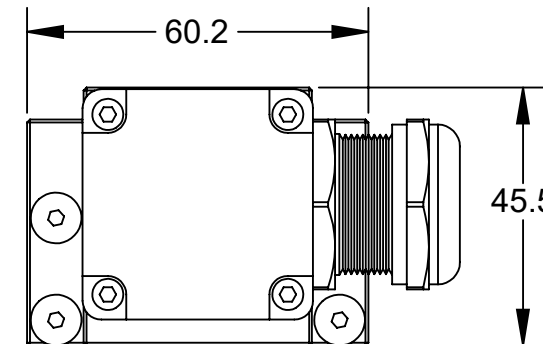


4010-0000085-01
High Pressure Pin Block Seal

9120-R32ZC6-M

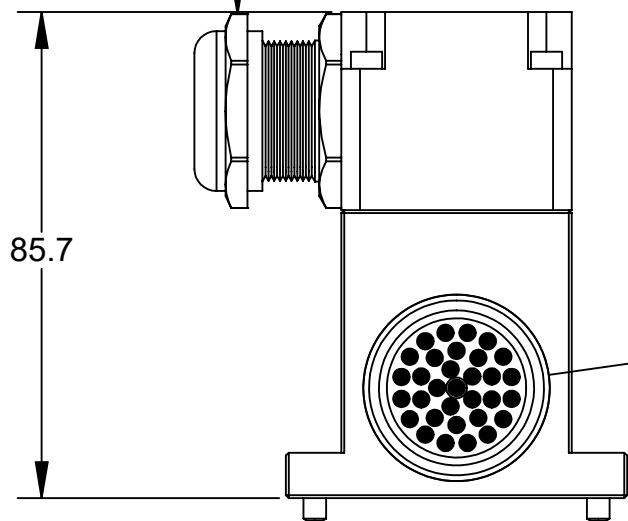


**9120-R32ZC6-T
Tool Module**



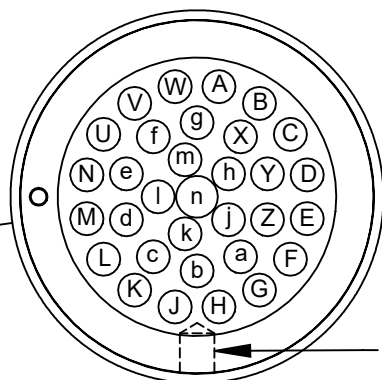
Hummel HSK-EMV-1.691.2500.50
M25x1.5 Thread Cord Grip,
13-18mm Cable Range

Hummel HSK-EMV-1.691.2500.50
M25x1.5 Thread Cord Grip,
13-18mm Cable Range

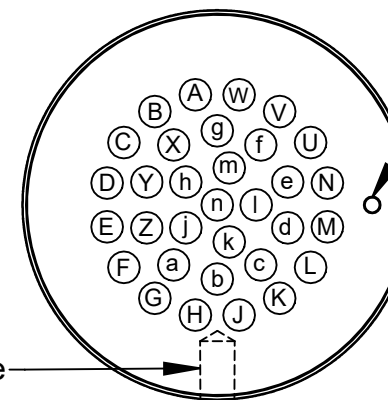


Removable
Access Plate
for Potting
Master Module

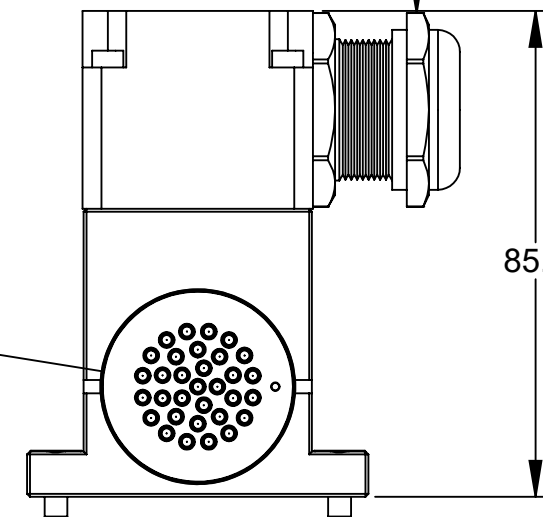
99.8
Coupled
Approx.



DETAIL A
SCALE 3 : 2
32-Pin Master Pin Block



DETAIL B
SCALE 3 : 2
32-Pin Tool Pin Block



NOTES: UNLESS OTHERWISE SPECIFIED.

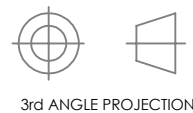
DO NOT SCALE DRAWING.
ALL DIMENSIONS ARE IN
MILLIMETERS.



1031 Goodworth Drive, Apex, NC 27539, USA
Tel: +1.919.772.0115 Email: info@ati-ia.com
Fax: +1.919.772.8259 www.ati-ia.com
ISO 9001 Registered Company

PROPERTY OF ATI INDUSTRIAL AUTOMATION, INC. NOT TO BE REPRODUCED IN ANY MANNER EXCEPT ON ORDER OR WITH PRIOR WRITTEN AUTHORIZATION OF ATI.

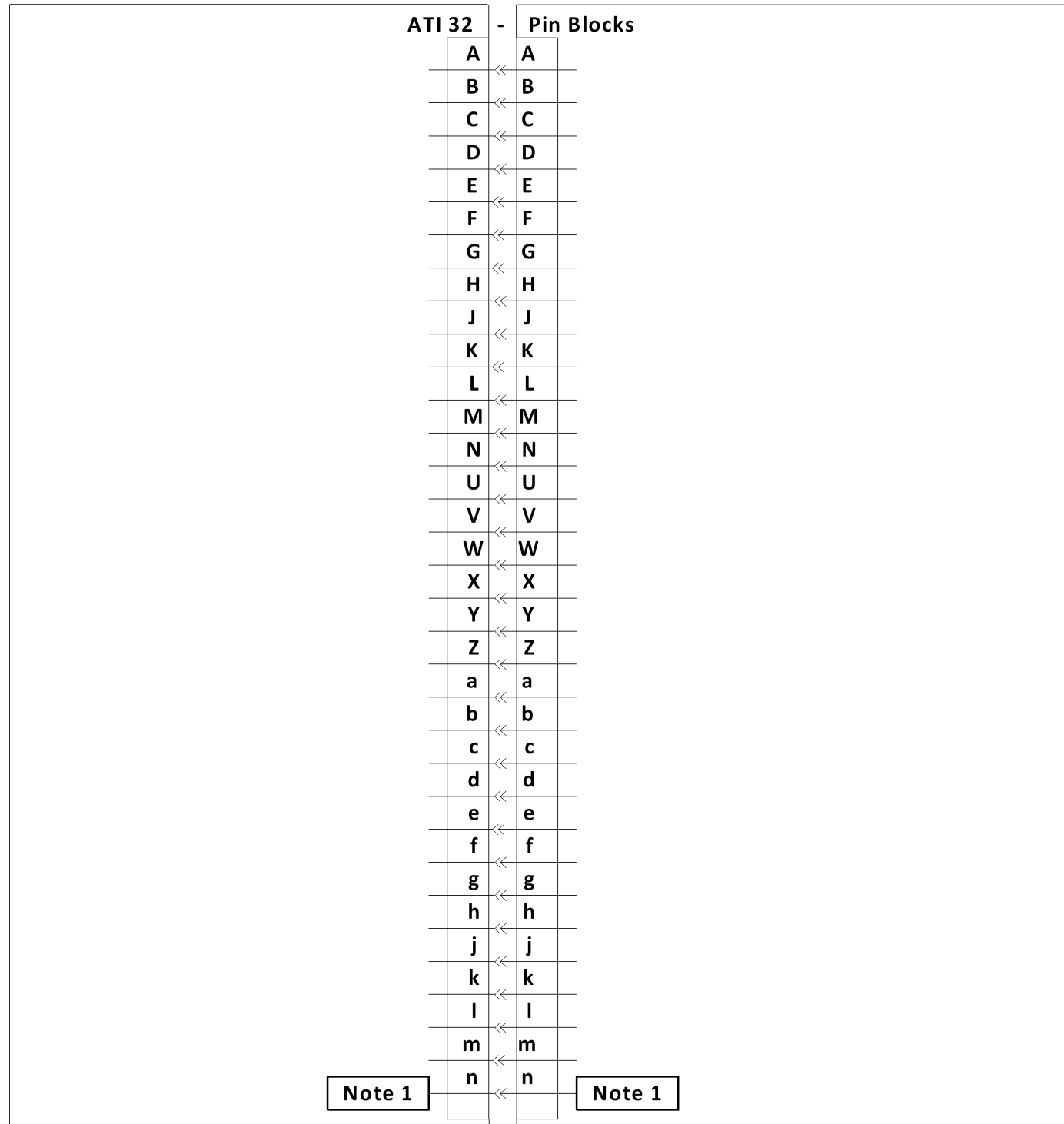
- Notes:
1. The R32ZC6 Master and Tool Module Pin Blocks are rated to 6A.
 2. Customer is responsible for supplying, wiring and securing cables to R32ZC6 Modules.
 3. For wet working conditions, it is strongly recommended that the R32ZC6 Modules be potted.



DRAWN BY: A. Takla, 01/21/14		TITLE R32ZC6 Module Customer Drawing	
CHECKED BY: W. Berrocal, 01/28/14 A. Strotzer, 01/28/14		SCALE 1:2	REVISION 05
PROJECT # 140110-1	SHEET 1 OF 2	SIZE B	DRAWING NUMBER 9630-20-R32ZC6

9120-R32ZC6-M Module

9120-R32ZC6-T Module



Note 1

Note 1

Notes:

- Pin "n" of the ATI pin block is First-To-Mate and Last-To-Break contact, this pin is recommended for use as ground.

NOTES: UNLESS OTHERWISE SPECIFIED.

DO NOT SCALE DRAWING. ALL DIMENSIONS ARE IN MILLIMETERS.



3rd ANGLE PROJECTION



1031 Goodworth Drive, Apex, NC 27539, USA
 Tel: +1.919.772.0115 Email: info@ati-ia.com
 Fax: +1.919.772.8259 www.ati-ia.com
 ISO 9001 Registered Company

PROPERTY OF ATI INDUSTRIAL AUTOMATION, INC. NOT TO BE REPRODUCED IN ANY MANNER EXCEPT ON ORDER OR WITH PRIOR WRITTEN AUTHORIZATION OF ATI.

DRAWN BY: A. Takla, 01/21/14		TITLE	
CHECKED BY: W. Berrocal, 01/28/14 A. Strotzer, 01/28/14		R32ZC6 Module Customer Drawing	
PROJECT #	140110-1	SHEET	OF 2
SCALE	1:2	SIZE	B
DRAWING NUMBER		REVISION	
9630-20-R32ZC6		05	