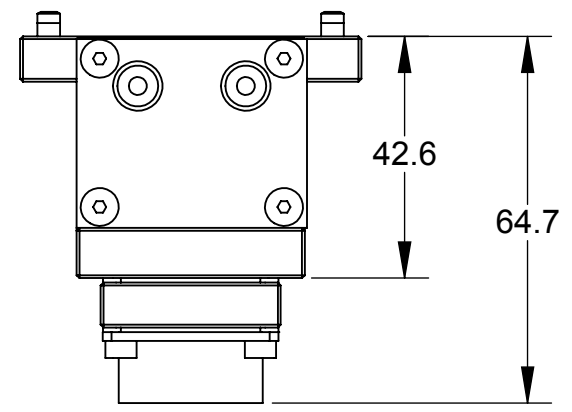
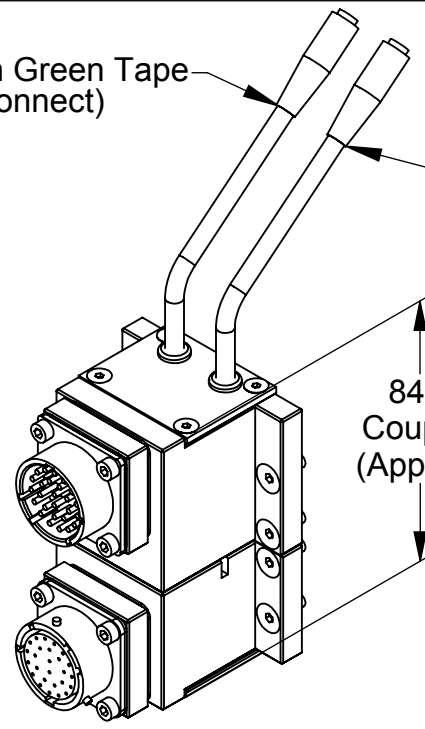


Rev.	Description	Initiator	Date
03	Eco 18976; Removed temperature rating note.	LJH	6/24/2020

R26W-V Master Module
(9120-R26W-M-V)



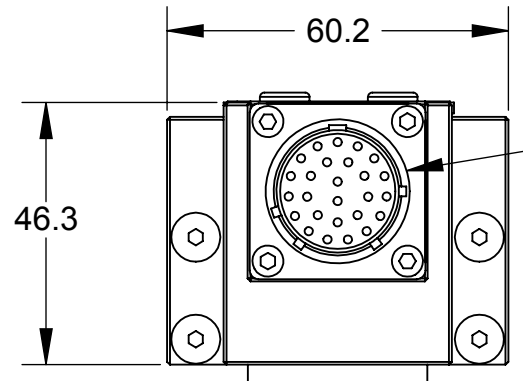
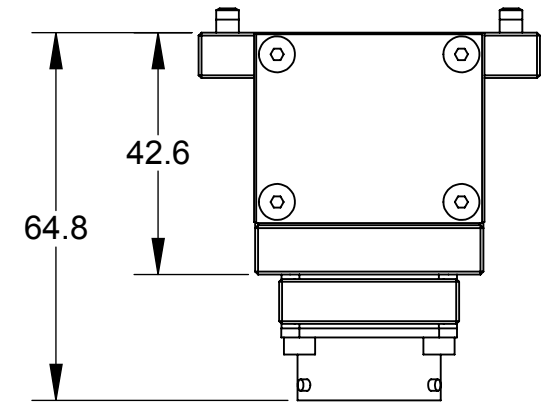
Lock Cable
Marked with Green Tape
(Quick Disconnect)



Unlock Cable
Marked with Red Tape
(Quick Disconnect)

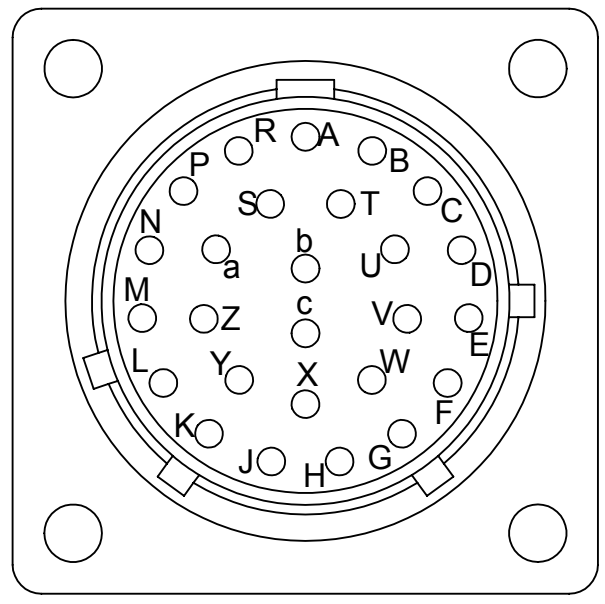
84.3
Coupled
(Approx.)

R26-VL Tool Module
(9120-R26-T-VL)



Amphenol Male Connector
PT02E-16-26P

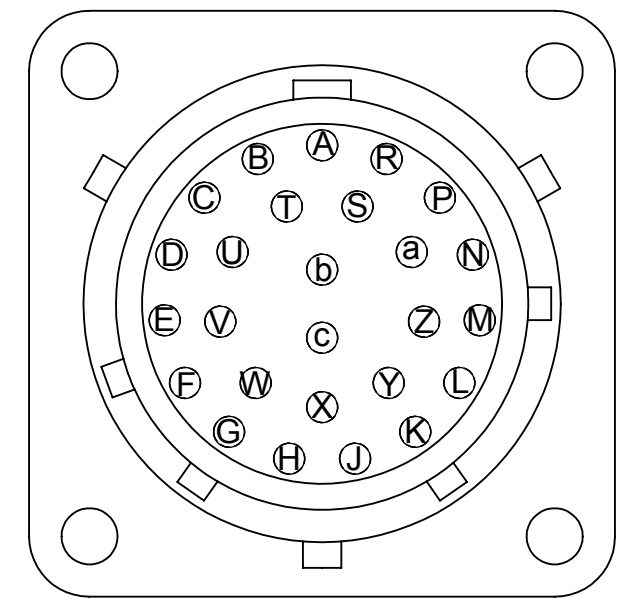
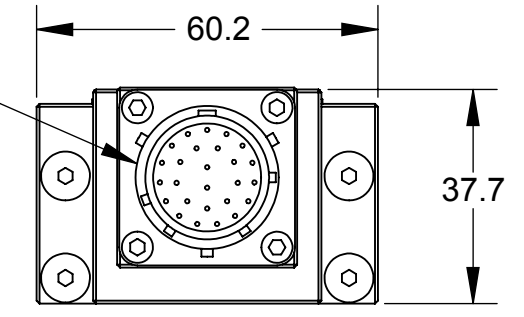
Serviceable Part:
(V-Ring)
4010-0000042-01



Lock/Unlock Cables

	Pin Out	
R26W-V Master PT02E-16-26P Male Connector		R26-VL Tool PT02E-16-26S Female Connector
A	----->>-----	A
B	----->>-----	B
Unlock Signal	-----C	C(n/c)
+24 VDC	-----D	D(n/c)
E	----->>-----	E
F	----->>-----	F
G	----->>-----	G
0 VDC	-----H	H(n/c)
J	----->>-----	J
Lock Signal	-----K	K(n/c)
L	----->>-----	L
M	----->>-----	M
N	----->>-----	N
P	----->>-----	P
R	----->>-----	R
S	----->>-----	S
T	----->>-----	T
U	----->>-----	U
V	----->>-----	V
W	----->>-----	W
X	----->>-----	X
Y	----->>-----	Y
Z	----->>-----	Z
a	----->>-----	a
b	----->>-----	b
(See Note 2) c	----->>-----	c

Amphenol Female Connector
PT02E-16-26S

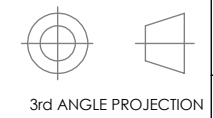


Notes:

1. Large views of connectors are 2.5:1 scale.
2. Pin "c" on the amphenol connector is First-to-mate Last-to-break at the tool changer interface. This pin is recommended for use as ground.
3. Lock/Unlock cables only shown in center view for clarity.
4. DANGER! - For electrical modules using > 60 VDC or 42 VAC, NO contact should be attempted before removing power. This especially includes separation or insertion of the mating connectors or any contact with the tool changer or its' components.

NOTES: UNLESS OTHERWISE SPECIFIED.

DO NOT SCALE DRAWING. ALL DIMENSIONS ARE IN MILLIMETERS.



1031 Goodworth Drive, Apex, NC 27539, USA
Tel: +1.919.772.0115 Email: info@ati-ia.com
Fax: +1.919.772.8259 www.ati-ia.com
ISO 9001 Registered Company

PROPERTY OF ATI INDUSTRIAL AUTOMATION, INC. NOT TO BE REPRODUCED IN ANY MANNER EXCEPT ON ORDER OR WITH PRIOR WRITTEN AUTHORIZATION OF ATI.

DRAWN BY: P.Sparrow, 12/11/07		TITLE	
CHECKED BY: D.Swanson, 12/11/07		R26W-M-V with R26-T-VL Module Drawing	
PROJECT #	SHEET 1 OF 1	SCALE	SIZE
		1:2	B
DRAWING NUMBER		REVISION	
9630-20-R26WMV R26TVL		03	