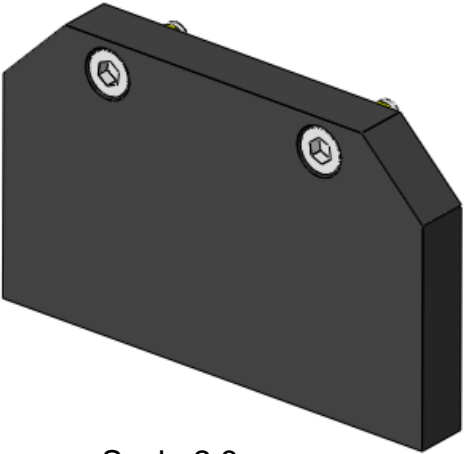
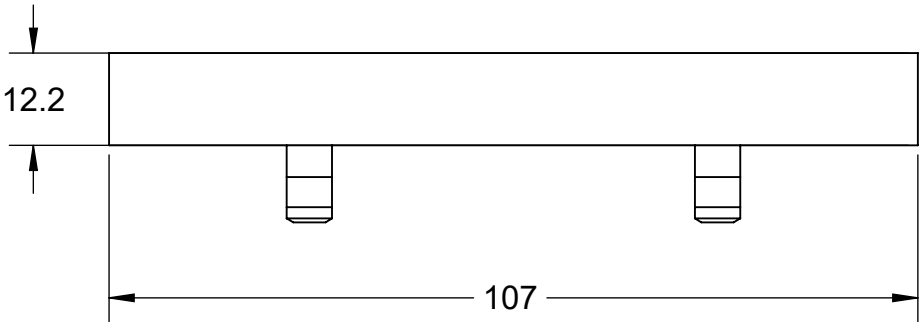
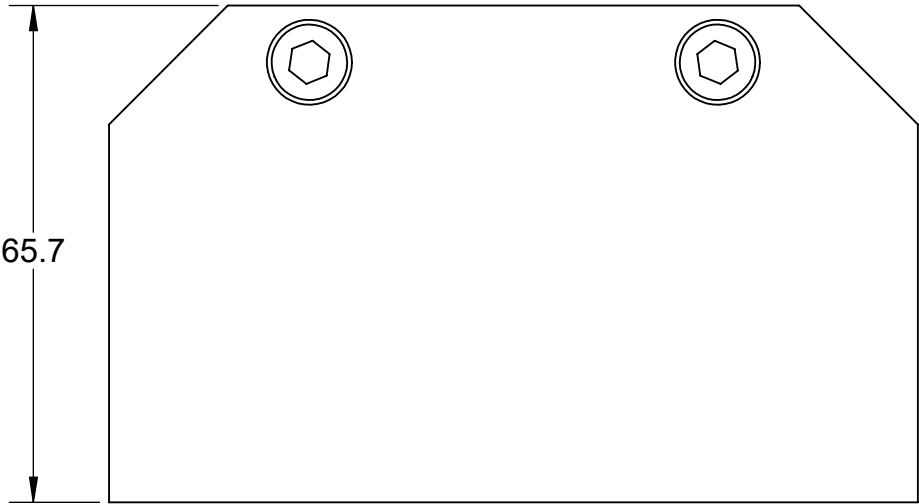
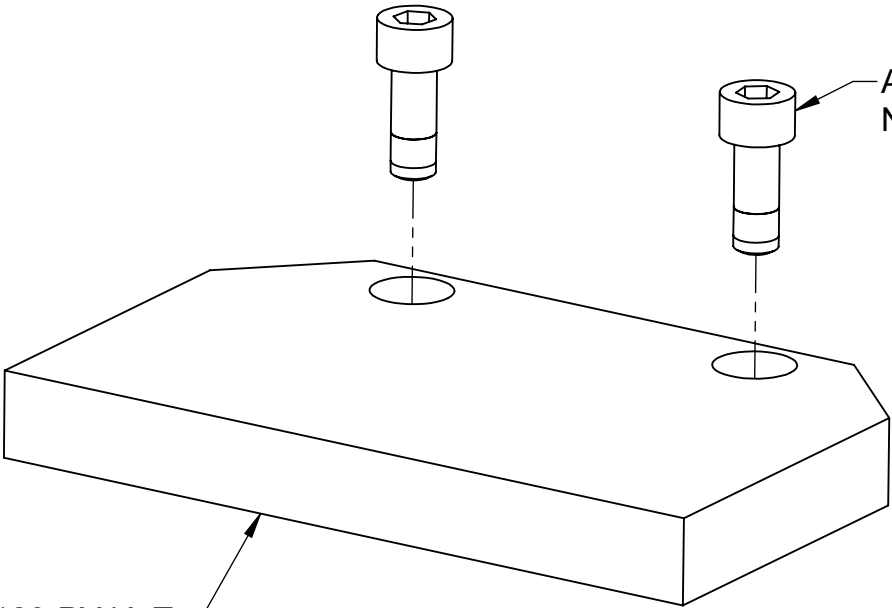


REV.	DESCRIPTION	INITIATOR	DATE
02	Initial Release	MN	8/4/2021





Scale 2:3



ATI Service PN: 3500-1066016-21A
Note 1.

9128-PY4A-T

Notes:
1. Torque bolts to 5 Nm (45 in-lbs) when fastening to the QC.

NOTES: UNLESS OTHERWISE SPECIFIED.		<div><div>1031 Goodworth Drive, Apex, NC 27539, USA Tel: +1.919.772.0115 www.ati-ia.com Fax: +1.919.772.8259 ISO 9001 Registered Company</div></div> <div>PROPERTY OF ATI INDUSTRIAL AUTOMATION, INC. NOT TO BE REPRODUCED IN ANY MANNER EXCEPT ON ORDER OR WITH PRIOR WRITTEN AUTHORIZATION OF ATI.</div>			
DO NOT SCALE DRAWING. ALL DIMENSIONS ARE IN MILLIMETERS.					
<div> 3rd ANGLE PROJECTION</div>		DRAWN BY: M. Newell, 2/28/21		TITLE Customer Drawing PY4A, S8	
		CHECKED BY: V. Vavilikolane, 3/11/21			
PROJECT # 210122-4 SHEET 1 OF 1		SCALE 1:1	SIZE B	DRAWING NUMBER 9630-20-PY4A	REVISION 02