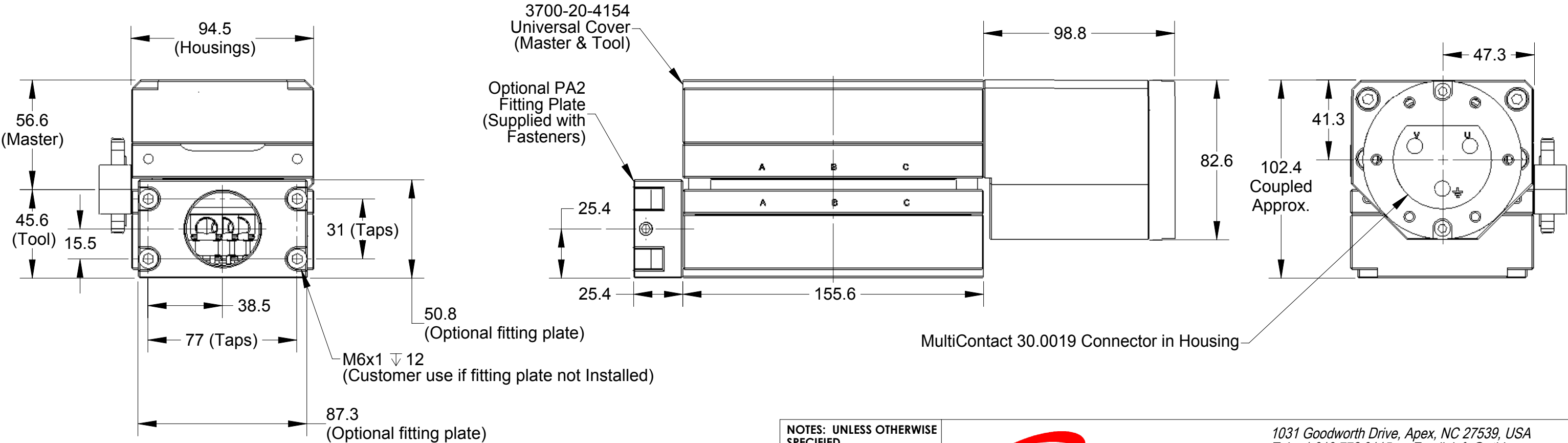
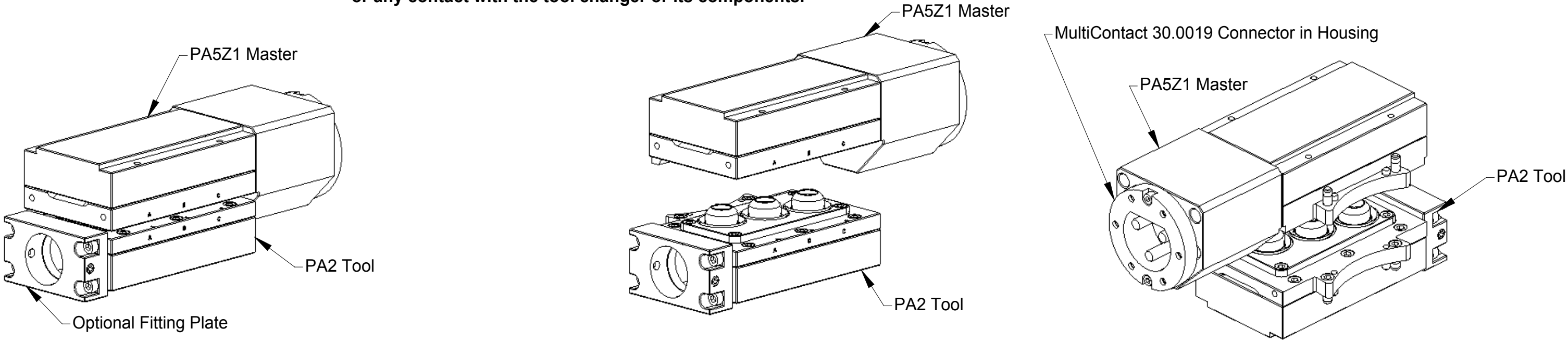


"DANGER! - For electrical modules using > 60VDC or 42 VAC, NO contact should be attempted before removing power. This especially includes separation or insertion of the mating connectors or any contact with the tool changer or its components."

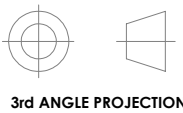
Rev.	Description	Initiator	Date
------	-------------	-----------	------



Multi-Contact Pin		Master ATI Contact		Tool ATI Contact
U	>--->	A	>--->	A
Gnd	>--->	B	>--->	B
V	>--->	C	>--->	C

NOTES: UNLESS OTHERWISE SPECIFIED.

DO NOT SCALE DRAWING. ALL DIMENSIONS ARE IN MILLIMETERS.



3rd ANGLE PROJECTION



1031 Goodworth Drive, Apex, NC 27539, USA
Tel: +1.919.772.0115 Email: info@ati-ia.com
Fax: +1.919.772.8259 www.ati-ia.com
ISO 9001 Registered Company

PROPERTY OF ATI INDUSTRIAL AUTOMATION, INC. NOT TO BE REPRODUCED IN ANY MANNER EXCEPT ON ORDER OR WITH PRIOR WRITTEN AUTHORIZATION OF ATI.

DRAWN BY: D.Lawson-4/10/2015

CHECKED BY: D.Wagner-4/14/15

TITLE

PA5Z1/PA2 Power Module, Service Parts

SCALE

1:2

SIZE

B

DRAWING NUMBER

9630-20-PA5Z1

REVISION

01

PROJECT # 150410-1 SHEET 1 OF 2

Rev.	Description	Initiator	Date
-	See Sheet1	-	-

Master Module Field Service Kit: 9005-20-2255 contains (1) each of the items below.

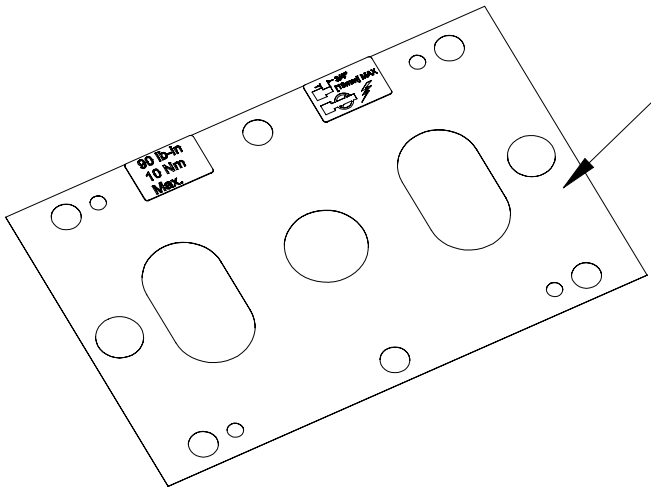
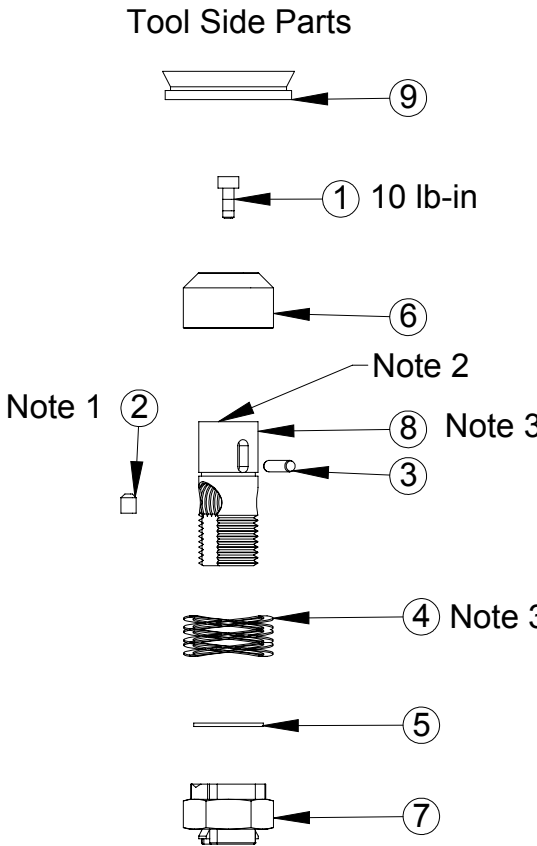
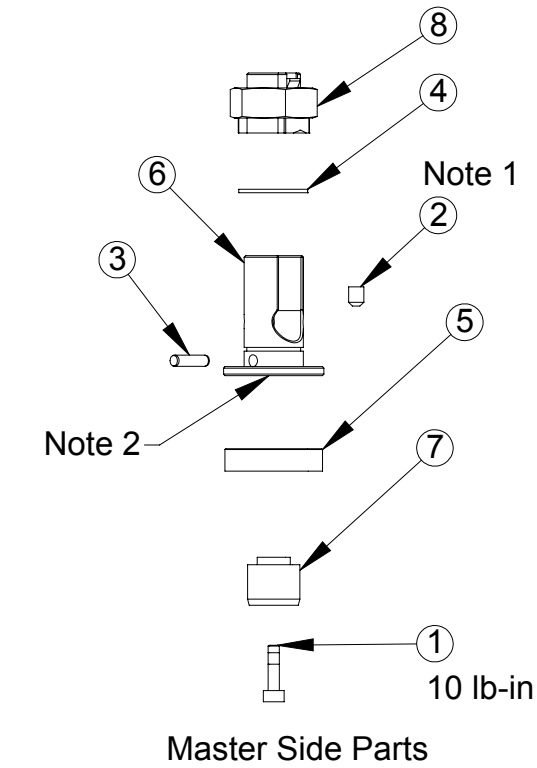
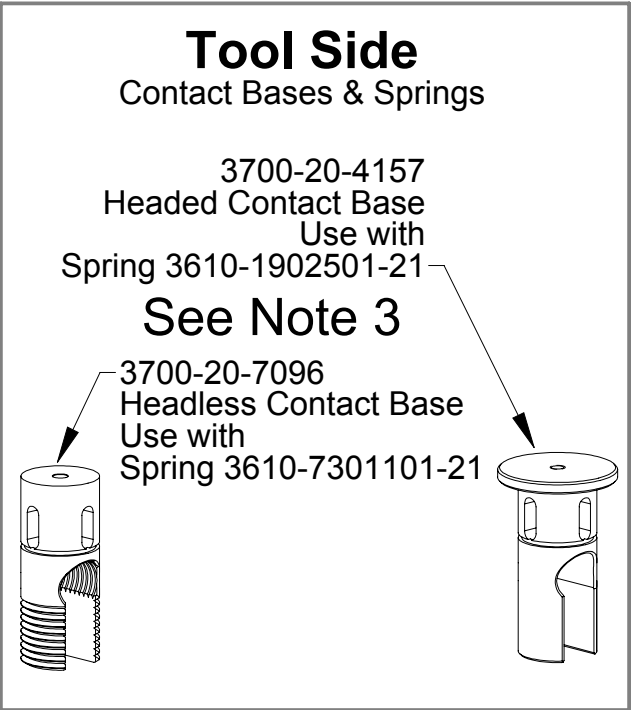
ITEM NO.	QTY.	PART NUMBER	DESCRIPTION
1	1	3500-1058012-15A	M3 x 12mm SHCS Blue Dyed Magni-565, ND Microspheres
2	1	3500-1962005-11	Set Screw M4 x 5 Cup Point
3	1	3540-0103012-21	3mm x 12mm Dowel, SS (DIN 2338)
4	1	3690-6500004-11	Low-Clearance C-Style Ring for 5/8" Shaft Dia.
5	1	3700-20-1544	High Power Module Contact Tip No-Touch Master
6	1	3700-20-4152	CONTACT BASE, MASTER
7	1	3700-20-4153	INSULATOR POST, MASTER
8	1	3700-20-4162	SPLIT-BOLT CABLE CLAMP

Notes:

1. Apply Loctite 7649 Primer & Loctite 222. Then install flush with surface to .010" below.
2. Apply conductive silver grease to large flat surface. (ATI 0290-70-0000-50-008 or Equivalent)
3. Two types of tool-side contact bases and springs have been used.
When ordering Field Service Kits as referenced above and below, the headless contact base will be supplied.
If only the spring is required, identify the contact base type using the images at the right and order the appropriate spring.

Tool Module Field Service Kit: 9005-20-2253 contains (1) each of the items below.

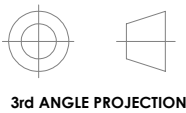
ITEM NO.	QTY.	PART NUMBER	DESCRIPTION
1	1	3500-1058008-15A	M3 X 8 SHCS Blue Dyed Magni-565, ND Microspheres
2	1	3500-1962005-11	Set Screw M4 x 5 Cup Point
3	1	3540-0103012-21	3mm x 12mm Dowel, SS (DIN 2338)
4	1	3610-7301101-21	Wave Spring, .91"OD x .44 Lg-Smalley 14892-08
5	1	3690-6500004-11	Low-Clearance C-Style Ring for 5/8" Shaft Dia.
6	1	3700-20-4158	CONTACT TIP, TOOL
7	1	3700-20-4162	SPLIT-BOLT CABLE CLAMP
8	1	3700-20-7096	Narrow #2 Contact Base, Tool
9	1	4010-0000041-01	V-RING



9005-20-1895 Insulator Sheet. Used between fiberglass cover and aluminum plate.
(Use with both 9121-PA5Z1-M and 9121-PA2-T)

NOTES: UNLESS OTHERWISE SPECIFIED.

DO NOT SCALE DRAWING.
ALL DIMENSIONS ARE IN MILLIMETERS.



1031 Goodworth Drive, Apex, NC 27539, USA
Tel: +1.919.772.0115 Email: info@ati-ia.com
Fax: +1.919.772.8259 www.ati-ia.com
ISO 9001 Registered Company

PROPERTY OF ATI INDUSTRIAL AUTOMATION, INC. NOT TO BE REPRODUCED IN ANY MANNER EXCEPT ON ORDER OR WITH PRIOR WRITTEN AUTHORIZATION OF ATI.

DRAWN BY: D.Lawson-4/10/2015		TITLE PA5Z1/PA2 Power Module, Service Parts			
CHECKED BY: D.Wagner-4/14/15					
PROJECT # 150410-1 SHEET 2 OF 2		SCALE 2:3	SIZE B	DRAWING NUMBER 9630-20-PA5Z1	REVISION 01