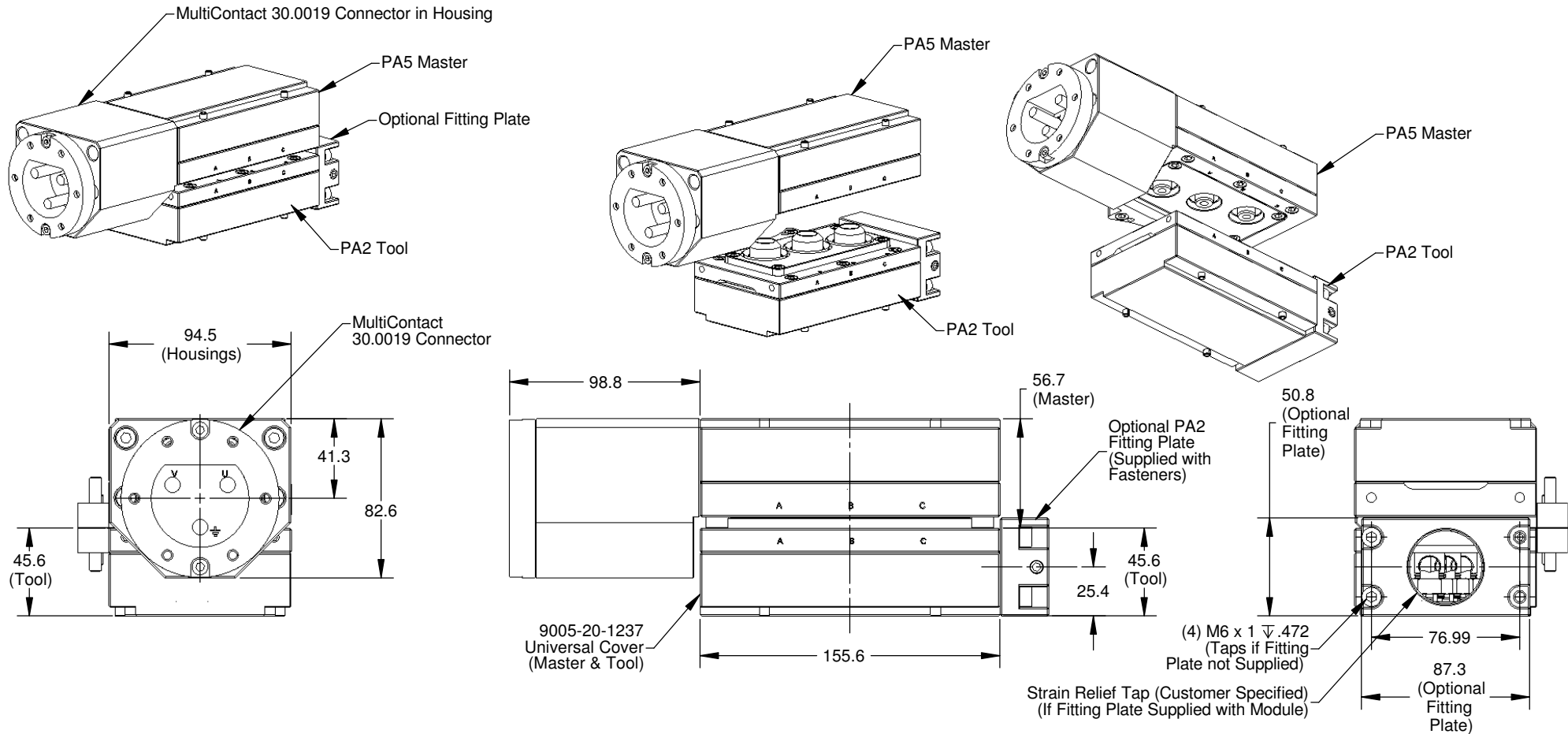


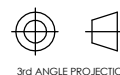
"DANGER! - For electrical modules using > 60VDC or 42 VAC, NO contact should be attempted before removing power. This especially includes separation or insertion of the mating connectors or any contact with the tool changer or its components."

Rev.	Description	Initiator	Date
02	Eco 7979; Replaced Retaining Ring 3690-6500002-11 with 3690-6500004-11 and Fastener 3500-1058008-21 with 3500-1058008-15A. Created Sheet 2 for Service Parts and added Torque and Loctite.	CF	9/2/2010



NOTES: UNLESS OTHERWISE SPECIFIED.

DO NOT SCALE DRAWING. ALL DIMENSIONS ARE IN MILLIMETERS.



3rd ANGLE PROJECTION

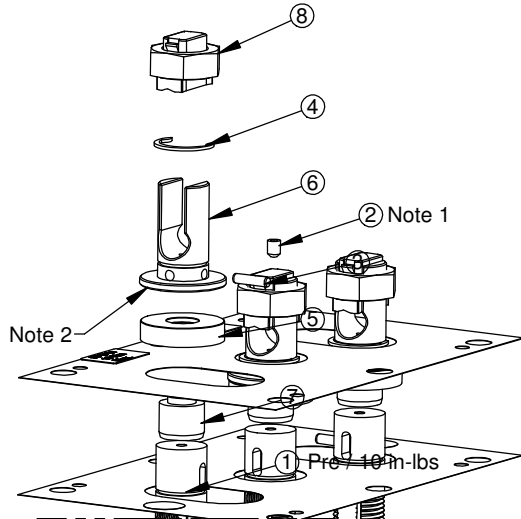
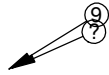


1031 Goodworth Drive, Apex, NC 27539, USA
 Tel: +1.919.772.0115 Email: info@ati-ia.com
 Fax: +1.919.772.8259 www.ati-ia.com
 ISO 9001 Registered Company

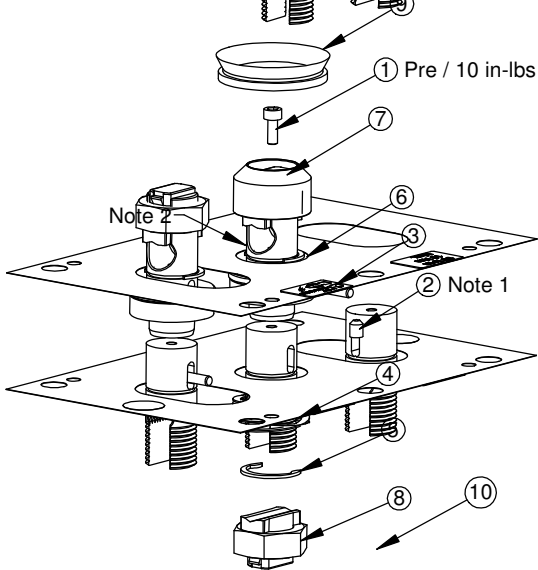
PROPERTY OF ATI INDUSTRIAL AUTOMATION, INC. NOT TO BE REPRODUCED IN ANY MANNER EXCEPT ON ORDER OR WITH PRIOR WRITTEN AUTHORIZATION OF ATI.

DRAWN BY: D.Lawson, 1/29/08	TITLE			REVISION
CHECKED BY: J.Williams, 1/29/08	PA5/PA2 Power Module, Service Parts			02
PROJECT # 070302-1 SHEET 1 OF 2	SCALE 1:2	SIZE B	DRAWING NUMBER 9630-20-PA5	

MASTER PARTS



TOOL PARTS



Rev.	Description	Initiator	Date
-	See Sheet1	-	-

***Field Service Kit: 9121-PA2-M-Contactkit**
contains items identified with asterisks.

ITEM NO.	PART NUMBER	DESCRIPTION
* 1	3500-1058008-15A	M3 x 8mm SHCS MB, ND Microspheres
* 2	3500-1962005-11	Set Screw M4 x 5 Cup Point
* 3	3540-0103012-11	3mm x 12mm Dowel Alloy Steel
* 4	3690-6500004-11	Low-Clearance C-Style Ring for 5/8" Shaft Dia.
* 5	3700-20-1544	Contact Tip, Master
* 6	3700-20-4152	CONTACT BASE, MASTER
* 7	3700-20-4153	INSULATOR POST, MASTER
* 8	3700-20-4162	SPLIT-BOLT CABLE CLAMP
9	9005-20-1198	Master Cleat Sub-Assembly

***Field Service Kit: 9121-PA2-T-Contactkit**
contains items identified with asterisks.

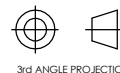
ITEM NO.	PART NUMBER	DESCRIPTION
* 1	3500-1058008-15A	M3 x 8mm SHCS MB, ND Microspheres
* 2	3500-1962005-11	Set Screw M4 x 5 Cup Point
* 3	3540-0103012-11	3mm x 12mm Dowel Alloy Steel
* 4	3610-1902501-21	WAVE SPRING, .6" I.D., 298#/in
* 5	3690-6500004-11	Low-Clearance C-Style Ring for 5/8" Shaft Dia.
* 6	3700-20-4157	CONTACT BASE, TOOL
* 7	3700-20-4158	CONTACT TIP, TOOL
* 8	3700-20-4162	SPLIT-BOLT CABLE CLAMP
* 9	4010-0000041-01	V-RING
10	9005-20-1199	Tool Cleat Sub-Assembly

Notes:

1. Apply 7649-222 and install flush with surface to .010" below.
2. Apply conductive silver grease to large flat surface.

NOTES: UNLESS OTHERWISE SPECIFIED.

DO NOT SCALE DRAWING. ALL DIMENSIONS ARE IN MILLIMETERS.



3rd ANGLE PROJECTION



1031 Goodworth Drive, Apex, NC 27539, USA
Tel: +1.919.772.0115 Email: info@ati-ia.com
Fax: +1.919.772.8259 www.ati-ia.com
ISO 9001 Registered Company

PROPERTY OF ATI INDUSTRIAL AUTOMATION, INC. NOT TO BE REPRODUCED IN ANY MANNER EXCEPT ON ORDER OR WITH PRIOR WRITTEN AUTHORIZATION OF ATI.

DRAWN BY: D.Lawson, 1/29/08	TITLE	PA5/PA2 Power Module, Service Parts	
CHECKED BY: J.Williams, 1/29/08	SCALE	SIZE	DRAWING NUMBER
PROJECT # 070302-1 SHEET 2 OF 2	2:3	B	9630-20-PA5
			REVISION
			02