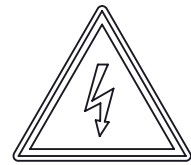
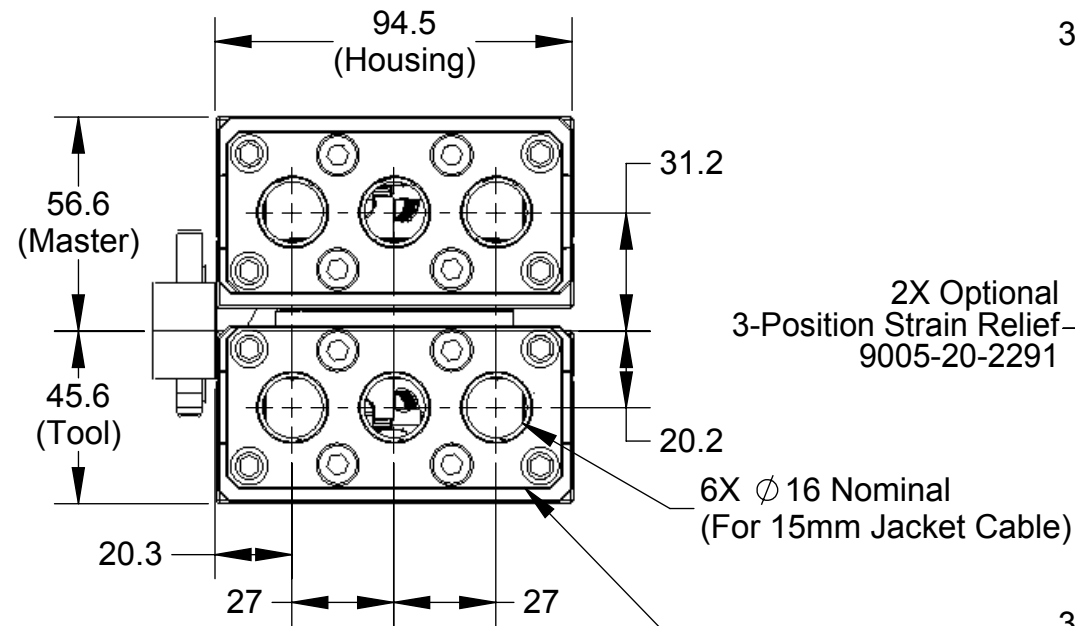
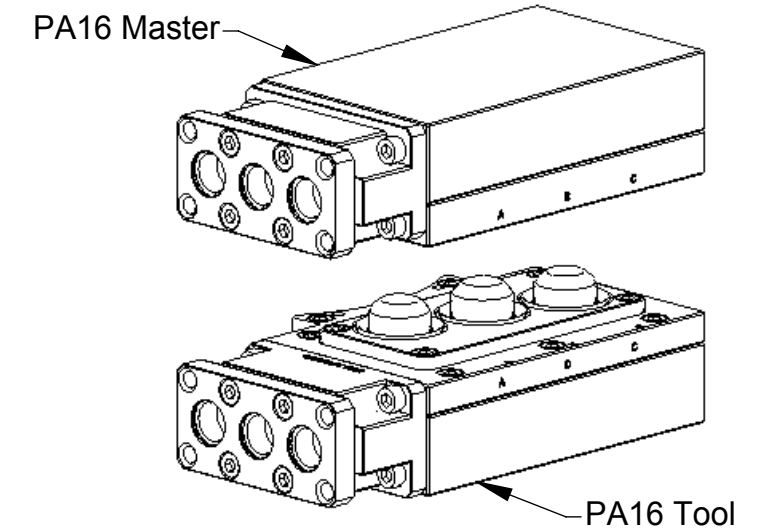
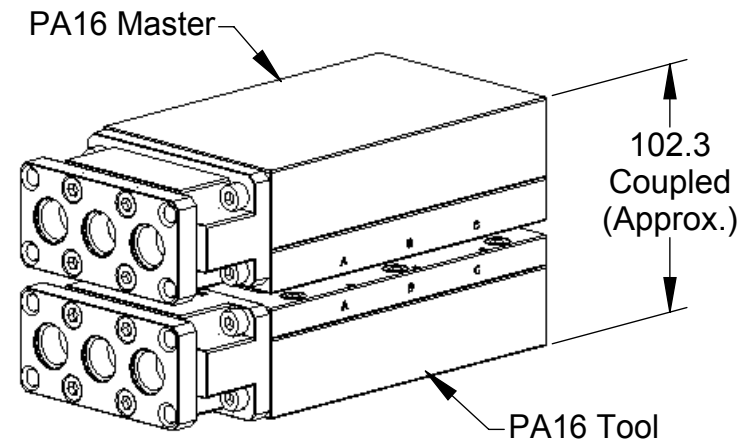
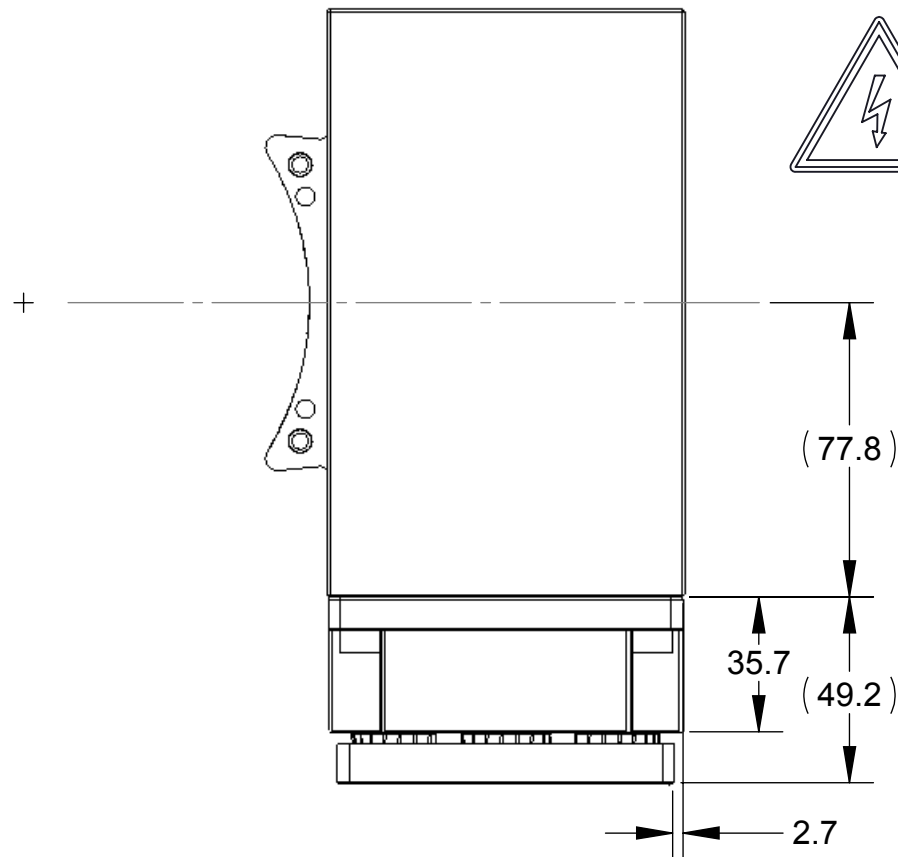


Rev.	Description	Initiator	Date
03	Eco 14434; Updated Danger note, added Caution note. Added Field service kits 9005-20-8466 and 9005-20-8467	LJH	4/26/16



**"DANGER!" - Electrical Shock Hazard**

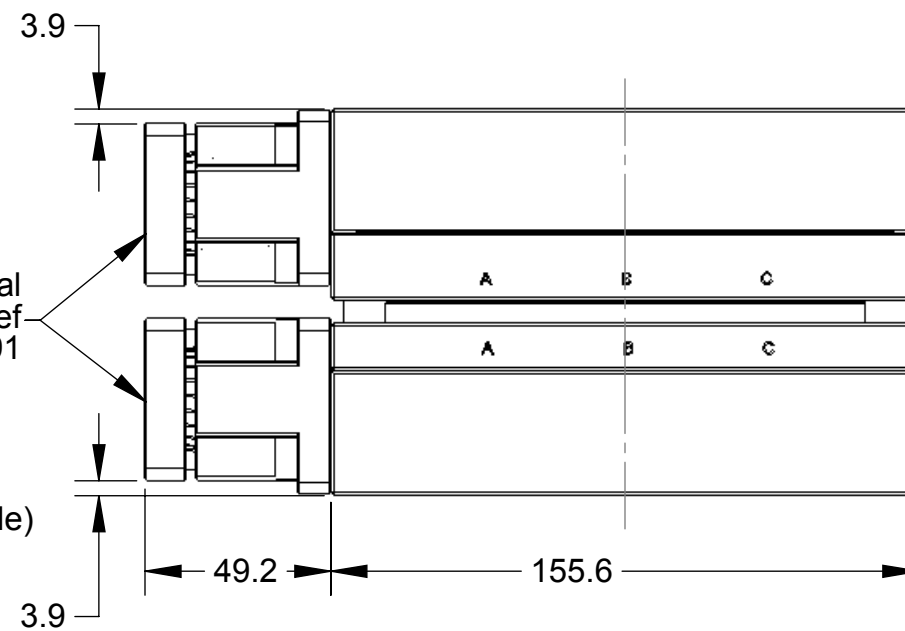
This module has a Voltage of 50V or greater, NO contact should be attempted before removing power. This especially includes separation or insertion of the mating connectors or any contact with the tool changer or its components.



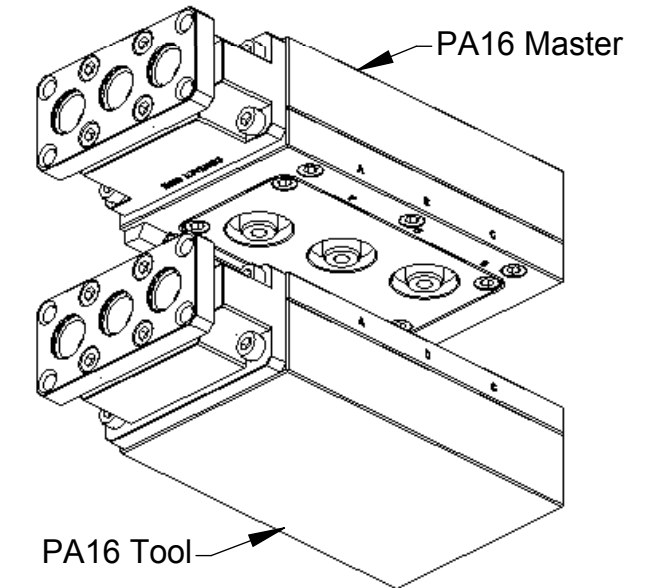
2X Optional 3-Position Strain Relief 9005-20-2291

6X  $\phi$  16 Nominal (For 15mm Jacket Cable)

2X Optional 3-Position Strain Relief 9005-20-2291



3700-20-8679 Universal Cover (Master & Tool)



**Caution:** The use of stiff heavy stranded cables can cause improper operation of the module by preventing compliant motion of its contacts. ATI requires the customer supplied cables be of the high-flex type with fine stranding to allow contact motion.

NOTES: UNLESS OTHERWISE SPECIFIED.

DO NOT SCALE DRAWING. ALL DIMENSIONS ARE IN MILLIMETERS.



3rd ANGLE PROJECTION

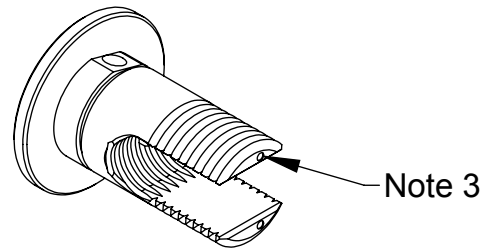
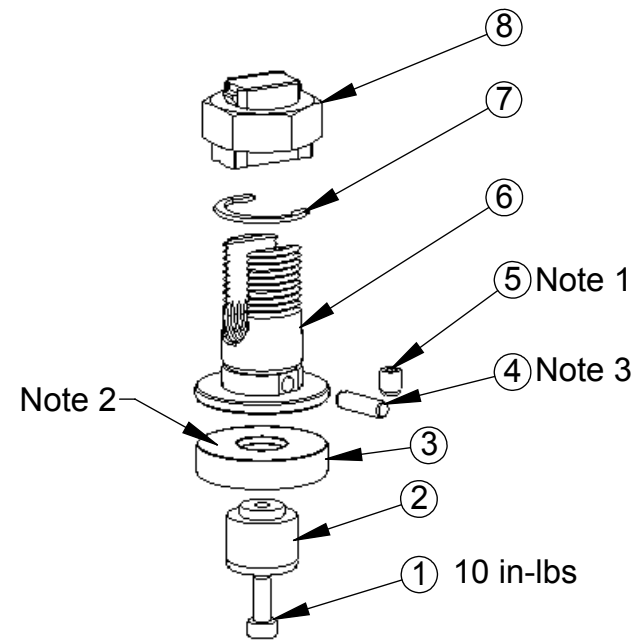


1031 Goodworth Drive, Apex, NC 27539, USA  
 Tel: +1.919.772.0115 Email: info@ati-ia.com  
 Fax: +1.919.772.8259 www.ati-ia.com  
 ISO 9001 Registered Company

PROPERTY OF ATI INDUSTRIAL AUTOMATION, INC. NOT TO BE REPRODUCED IN ANY MANNER EXCEPT ON ORDER OR WITH PRIOR WRITTEN AUTHORIZATION OF ATI.

DRAWN BY: D.Lawson-5/1/13		TITLE	
CHECKED BY: D.Wagner-5/2/13		PA16 Power Module, Service Parts	
PROJECT # 130501-2	SHEET 1 OF 2	SCALE 1:2	SIZE B
DRAWING NUMBER 9630-20-PA16		REVISION 03	

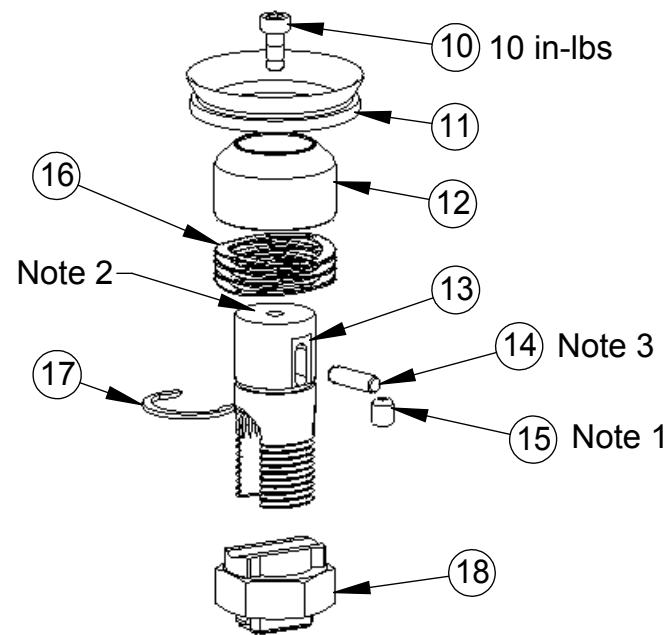
**MASTER PARTS**



Field Service Kit: 9005-20-8466 contains one each of items:  
1, 2, 3, 4, 5, 6, 7 & 8

ITEM NO.	PART NUMBER	DESCRIPTION
1	3500-1058014-15A	M3 x 14 SHCS
2	3700-20-4153	INSULATOR POST, MASTER
3	3700-20-1544	High Power Module Contact Tip No-Touch Master
4	3540-0103012-21	3mm x 12mm Dowel, SS (DIN 2338)
5	3500-1962005-11	Set Screw M4 x 5 Cup Point
6	3700-20-8677	Offset #2 Contact Base, Master
7	3690-6500004-11	Low-Clearance C-Style Ring for 5/8" Shaft Dia.
8	3700-20-4162	SPLIT-BOLT CABLE CLAMP

Field Service Kit: 9005-20-8467 contains one each of items:  
10, 11, 12, 13, 14, 15, 16, 17 & 18

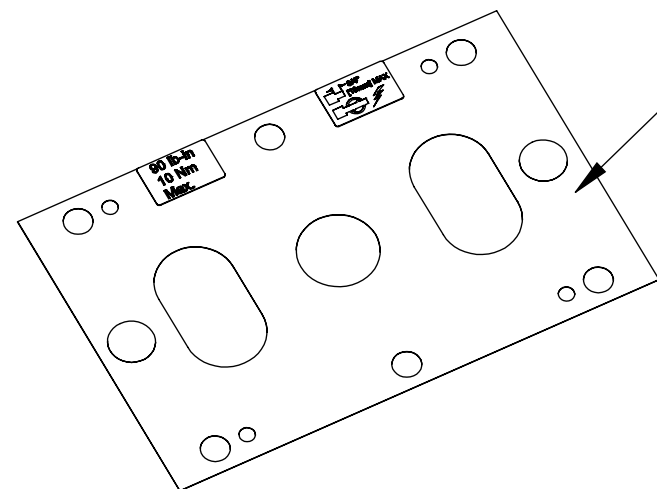
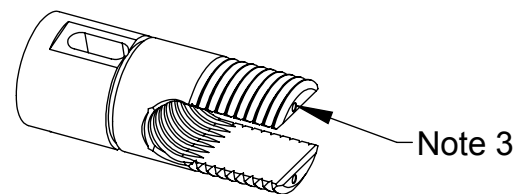


ITEM NO.	PART NUMBER	DESCRIPTION
10	3500-1058008-15A	M3 x 12 SHCS
11	4010-0000041-01	V-RING
12	3700-20-4158	CONTACT TIP, TOOL
13	3700-20-8678	OFFSET #2 CONTACT BASE, TOOL
14	3540-0103012-21	3mm x 12mm Dowel, SS (DIN 2338)
15	3500-1962005-11	Set Screw M4 x 5 Cup Point
16	3610-7301101-21	Wave Spring, .91"OD x .44 Lg-Smalley 14892-08
17	3690-6500004-11	Low-Clearance C-Style Ring for 5/8" Shaft Dia.
18	3700-20-4162	SPLIT-BOLT CABLE CLAMP

**Notes:**

1. Apply Loctite 7649 Primer & Loctite 222. Then install flush with surface to .010" below.
2. Liberally apply conductive silver grease to large flat surface.
3. Dimples on contact bases are used to visually align them with the 3mm dowels in the module assemblies.

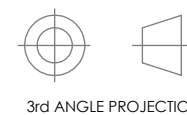
**TOOL PARTS**



9005-20-1895 Insulator Sheet. Used between fiberglass cover and aluminum plate.  
(Use with both 9121-PA16-M and 9121-PA16-T)

NOTES: UNLESS OTHERWISE SPECIFIED.

DO NOT SCALE DRAWING. ALL DIMENSIONS ARE IN MILLIMETERS.



3rd ANGLE PROJECTION



1031 Goodworth Drive, Apex, NC 27539, USA  
Tel: +1.919.772.0115 Email: info@ati-ia.com  
Fax: +1.919.772.8259 www.ati-ia.com  
ISO 9001 Registered Company

PROPERTY OF ATI INDUSTRIAL AUTOMATION, INC. NOT TO BE REPRODUCED IN ANY MANNER EXCEPT ON ORDER OR WITH PRIOR WRITTEN AUTHORIZATION OF ATI.

DRAWN BY: D.Lawson-5/1/13		TITLE	
CHECKED BY: D.Wagner-5/2/13		PA16 Power Module, Service Parts	
PROJECT #	130501-2	SHEET	OF 2
SCALE	1:2	SIZE	B
DRAWING NUMBER	9630-20-PA16		REVISION
			03