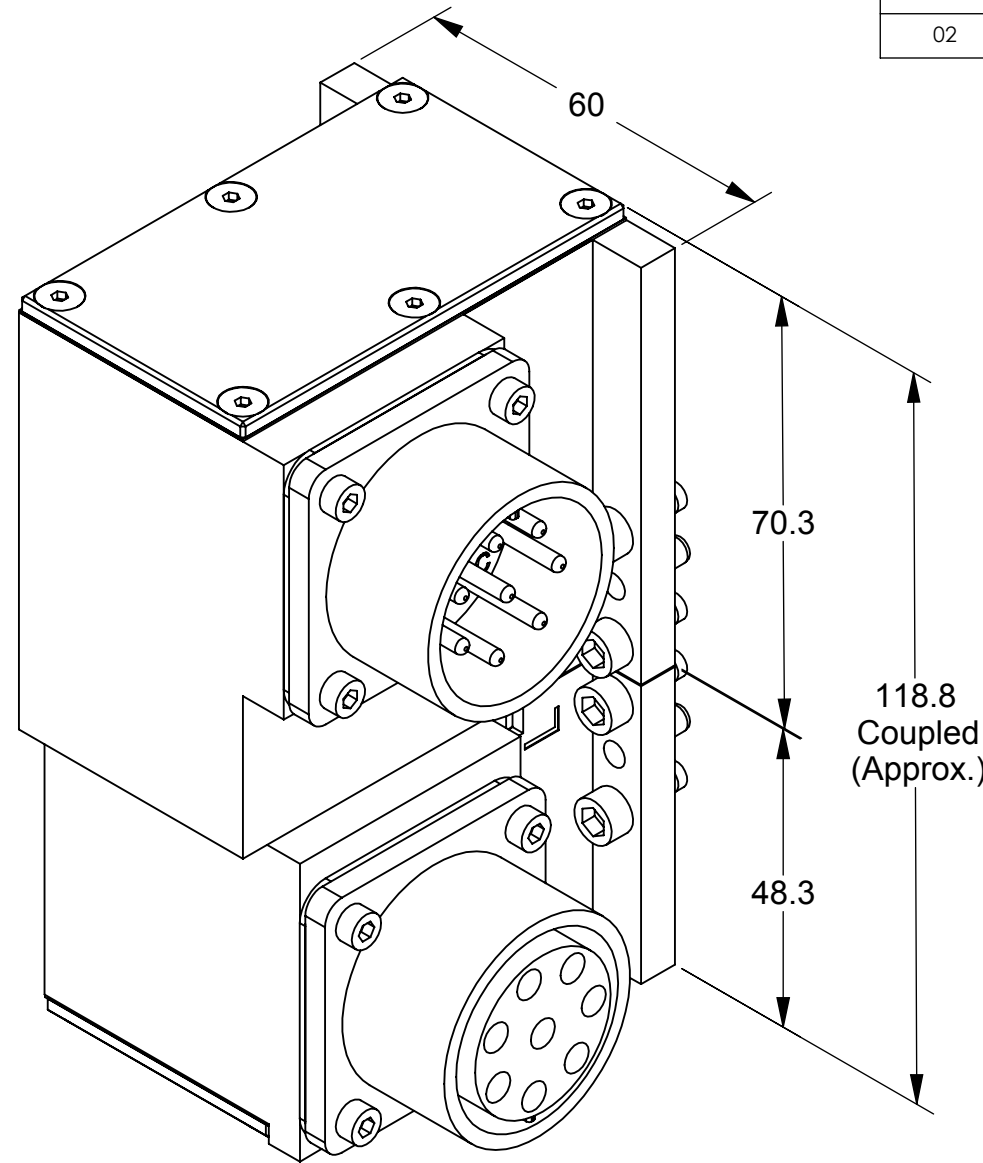
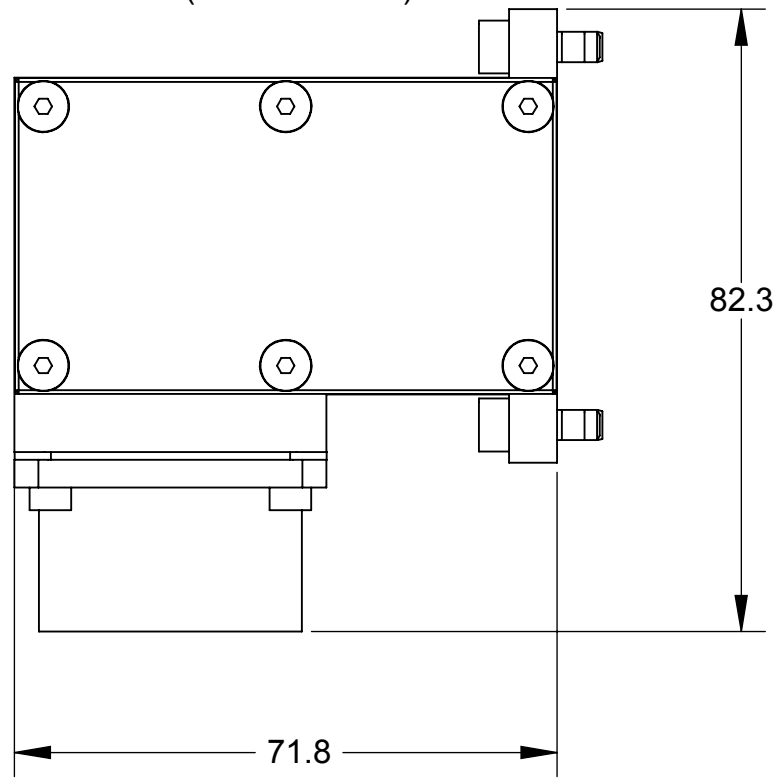
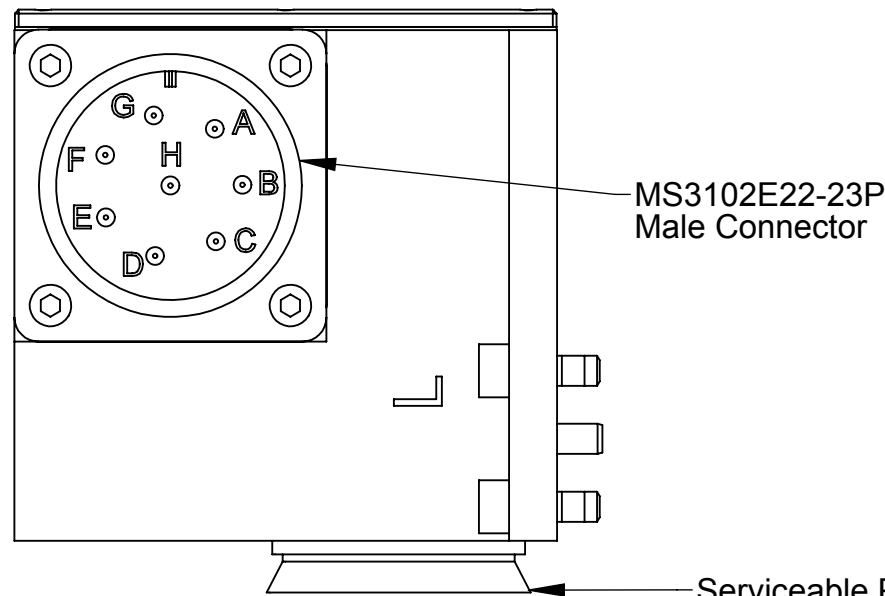
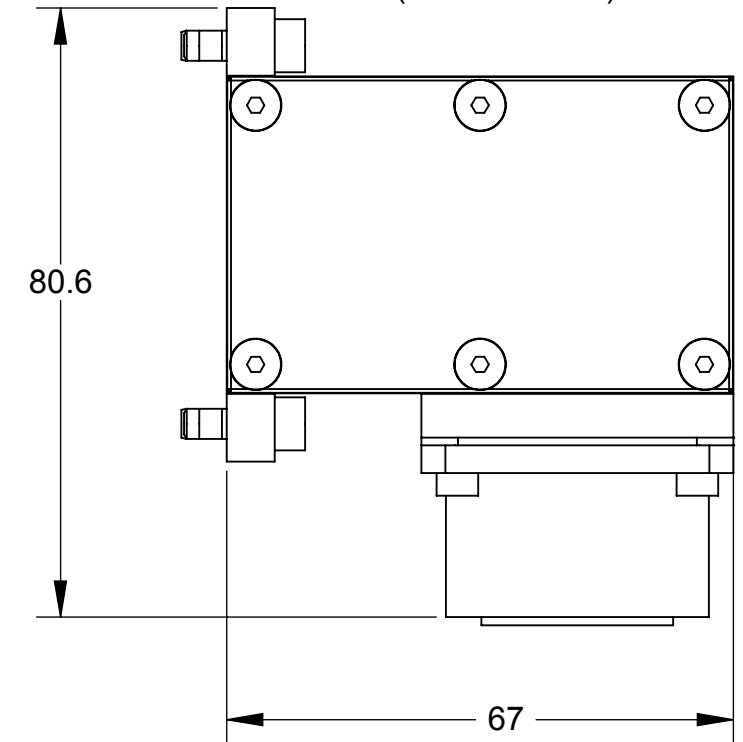


Rev.	Description	Initiator	Date
02	ECO# 5690 Updated tool side.	PS	8/16/2007

MT8L Master Module  
(9120-MT8L-M)



MT8L Tool Module  
(9120-MT8L-T)

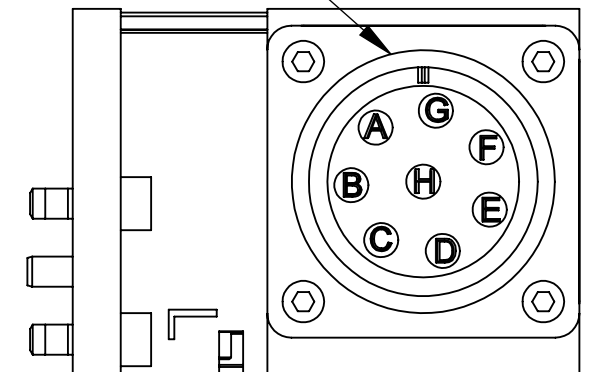


MS3102E22-23P  
Male Connector

Serviceable Part:  
(V-Ring)  
4010-0000041-01

MT8L Master MS3102E22-23P Male Connector	MT8L Pin Out	MT8L Tool MS3102E22-23S Female Connector
A	----->	A
B	----->	B
C	----->	C
D	----->	D
E	----->	E
F	----->	F
G	----->	G
H	----->	H (See Note 1)

MS3102E22-23S  
Female Connector



Note:

- Pin "H" on the amphenol connector is First-to-mate Last-to-break at the Tool Changer interface. This pin is recommended for use as ground.
- DANGER!** - For electrical modules using > 60 VDC or 42 VAC, NO contact should be attempted before removing power. This especially includes separation or insertion of the mating connectors or any contact with the tool changer or its' components.

NOTES: UNLESS OTHERWISE SPECIFIED  
 DO NOT SCALE DRAWING. DRAWN IN SOLIDWORKS.  
 ALL DIMENSIONS ARE IN MILLIMETERS.



1031 Goodworth Drive, Apex, NC 27539, USA  
 Tel: +1.919.772.0115 Email: info@ati-ia.com  
 Fax: +1.919.772.8259 www.ati-ia.com  
 ISO 9001 Registered Company

DRAWN BY: P.Sparrow, 4/11/07	TITLE MT8L Module Drawing		
CHECKED BY: D.Swanson, 4/11/07	SCALE 1:1	SIZE B	DRAWING NUMBER 9630-20-MT8L-02
WEIGHT LBS: 1.6	PRODUCT RELEASE # 070228-1 DATE:		
ASSEMBLY REF:	SHEET 1 OF 1		

