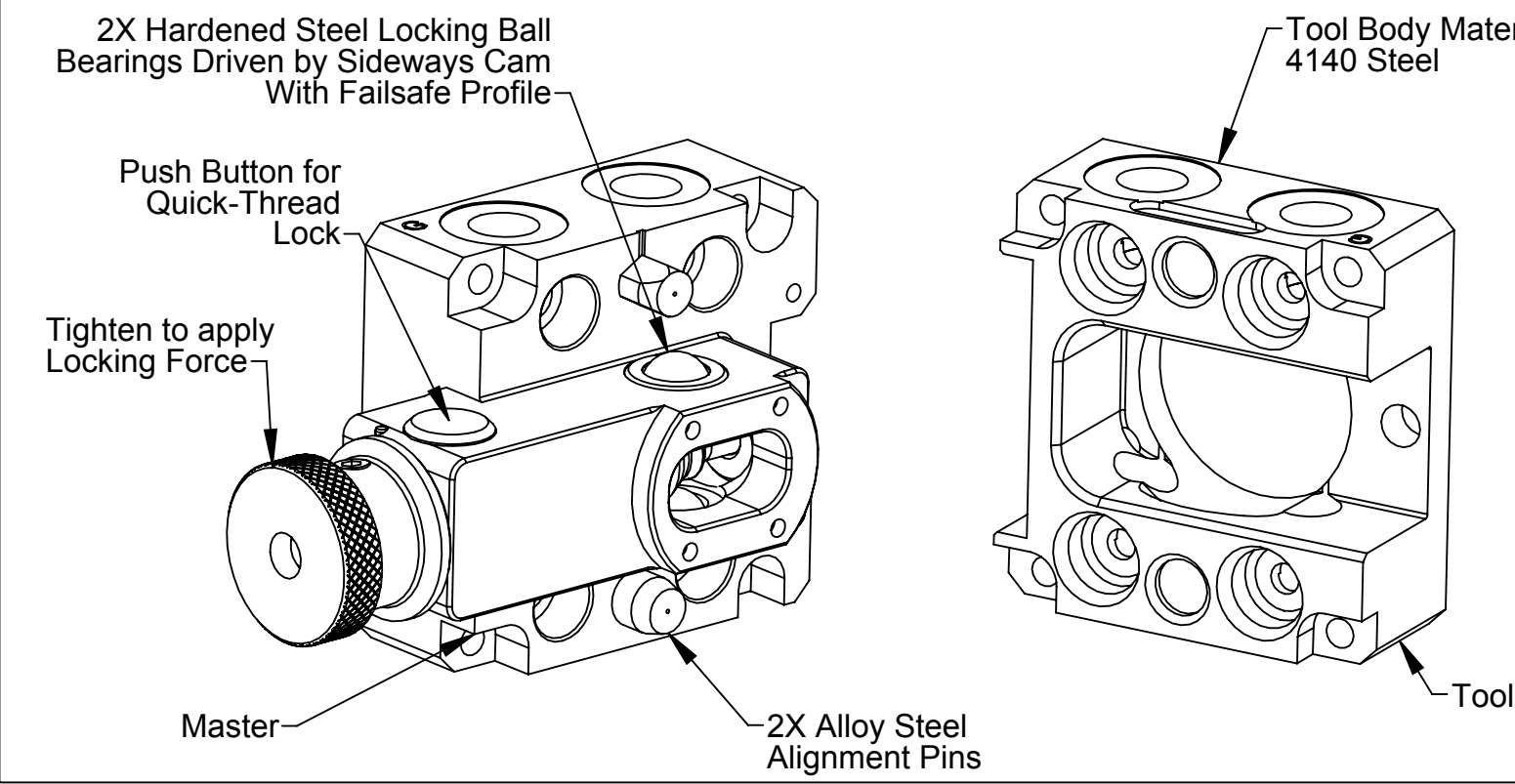
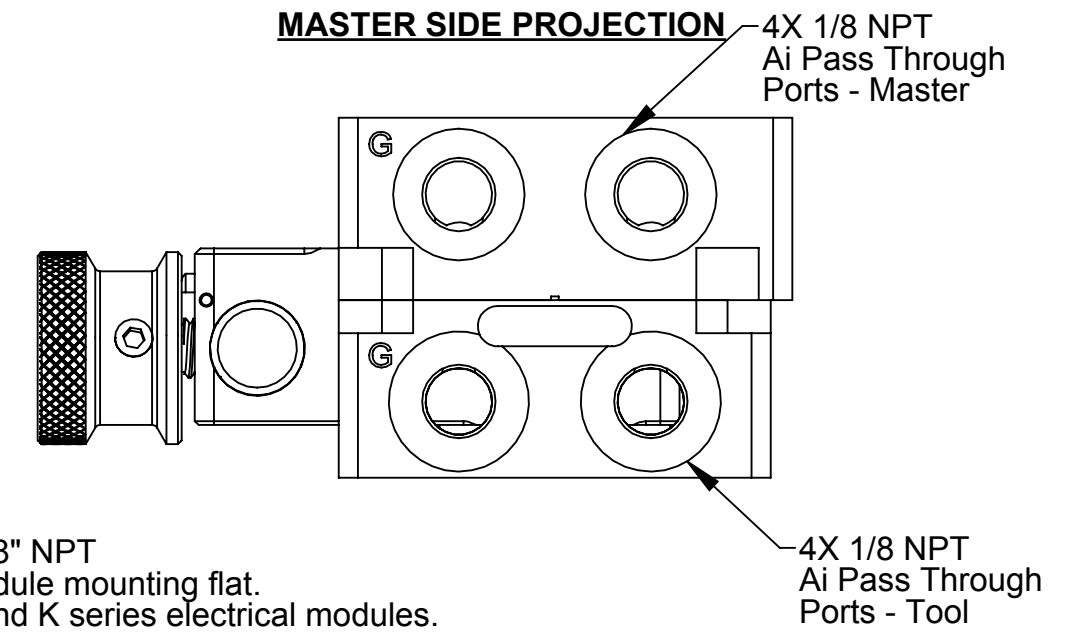
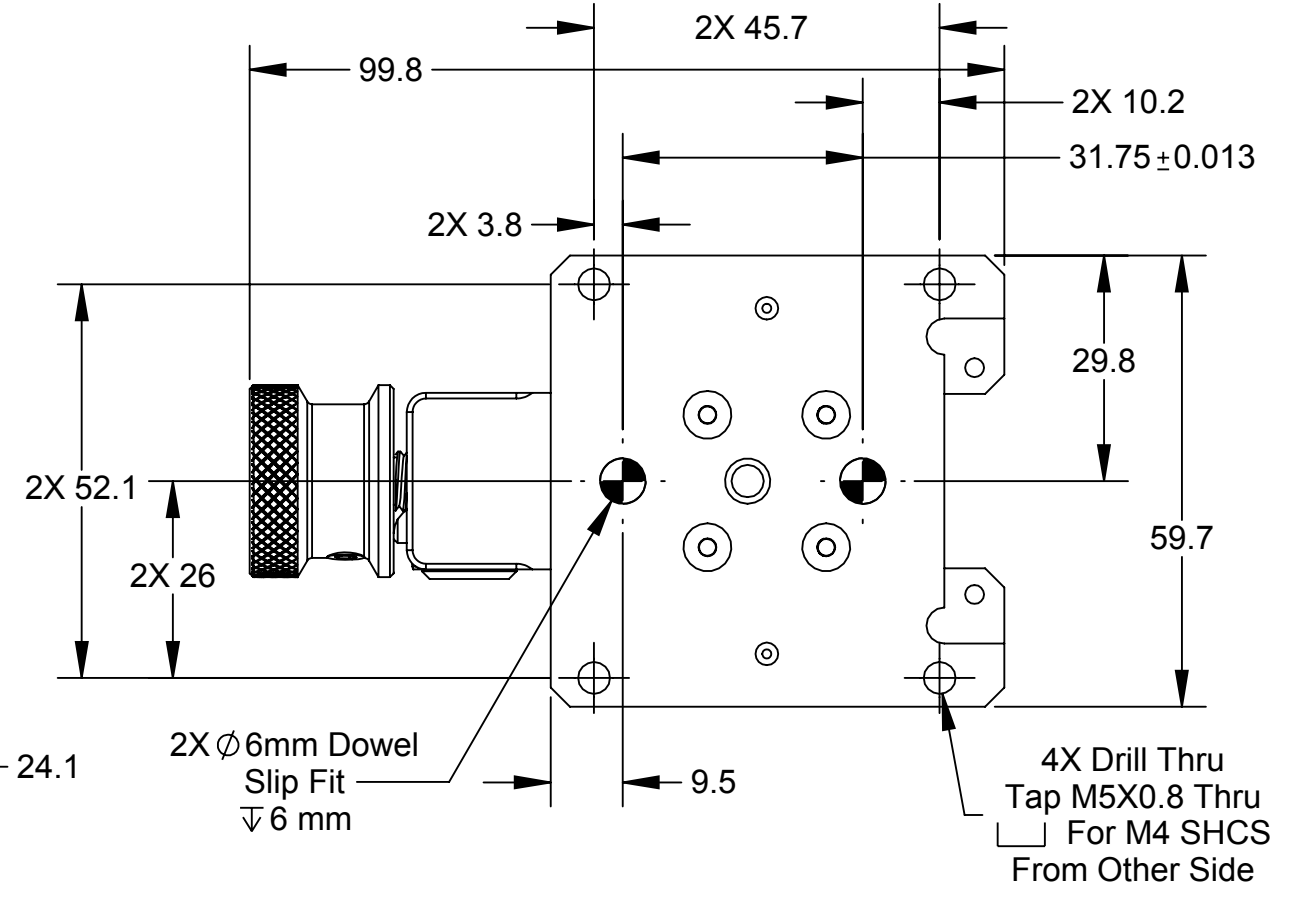
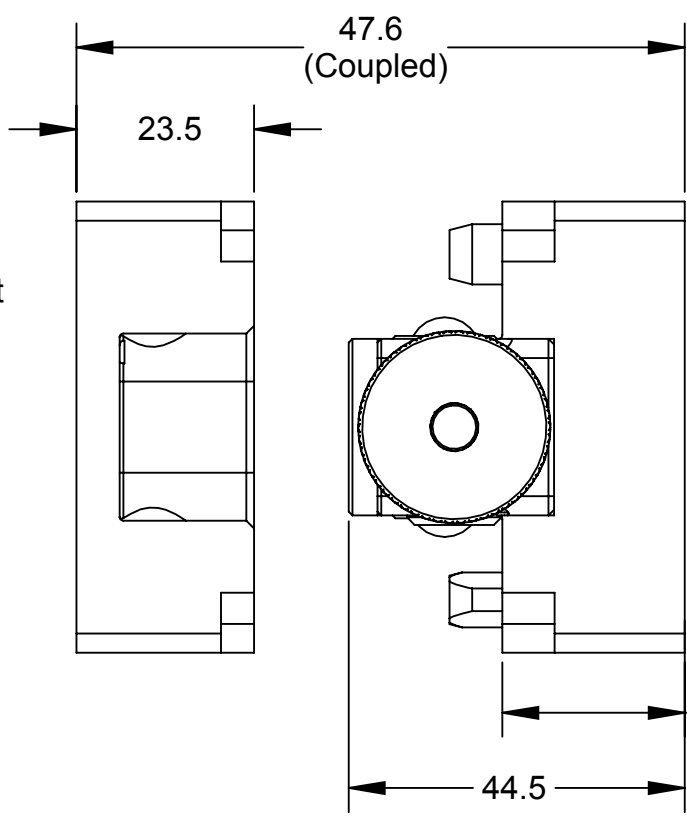
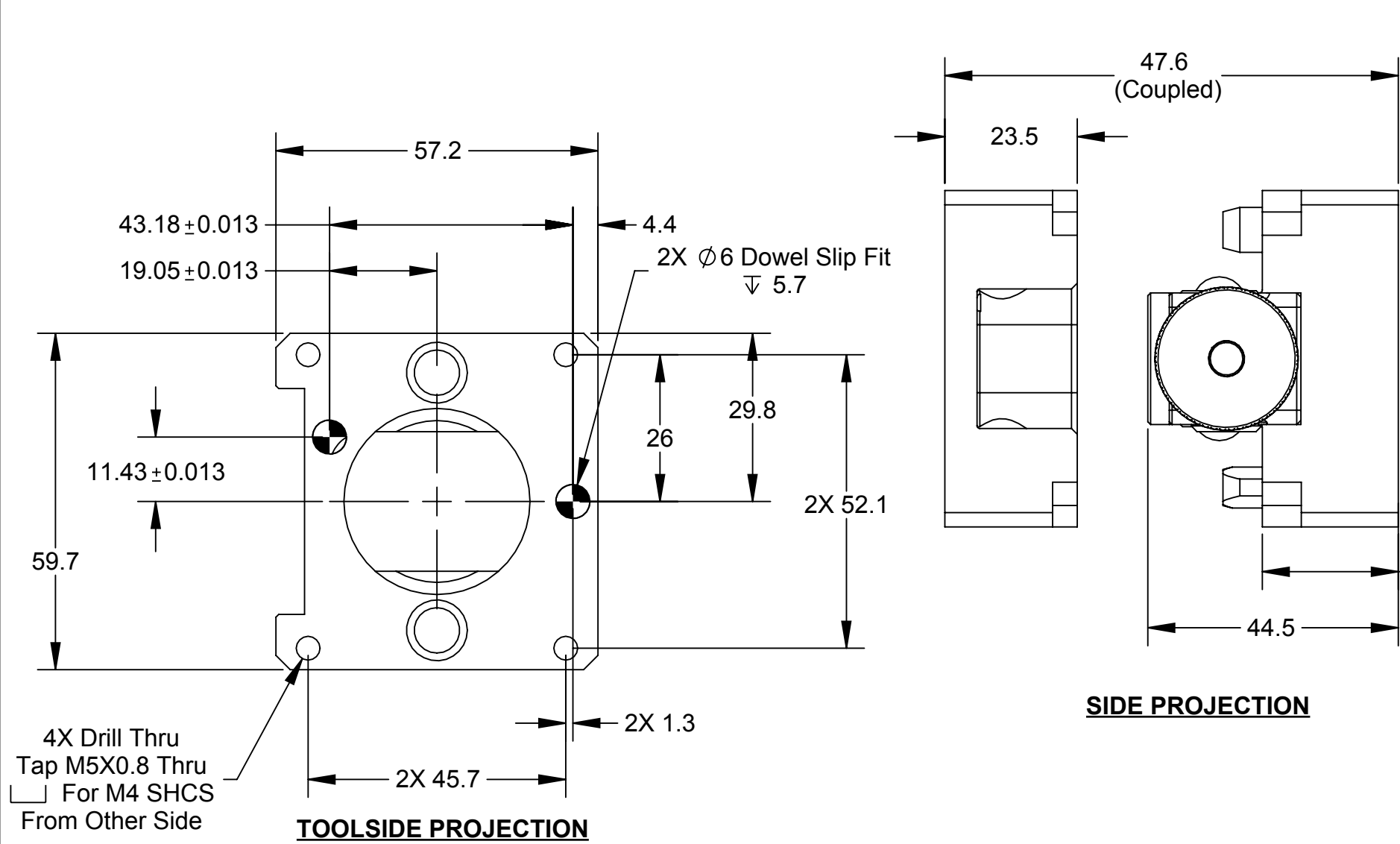


Rev.	Description	Initiator	Date
02	Eco 15546; Dim on tool side projection was 11.4, now 11.43	LJH	4/6/17

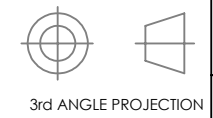


Notes:

1. Suggested Payload Limit: 35lbs.
Pneumatic Pass Through: (4) 1/8" NPT
2. Unit Features one additional module mounting flat.
3. Compatible Modules: D series and K series electrical modules.

NOTES: UNLESS OTHERWISE SPECIFIED.

DO NOT SCALE DRAWING. ALL DIMENSIONS ARE IN MILLIMETERS.

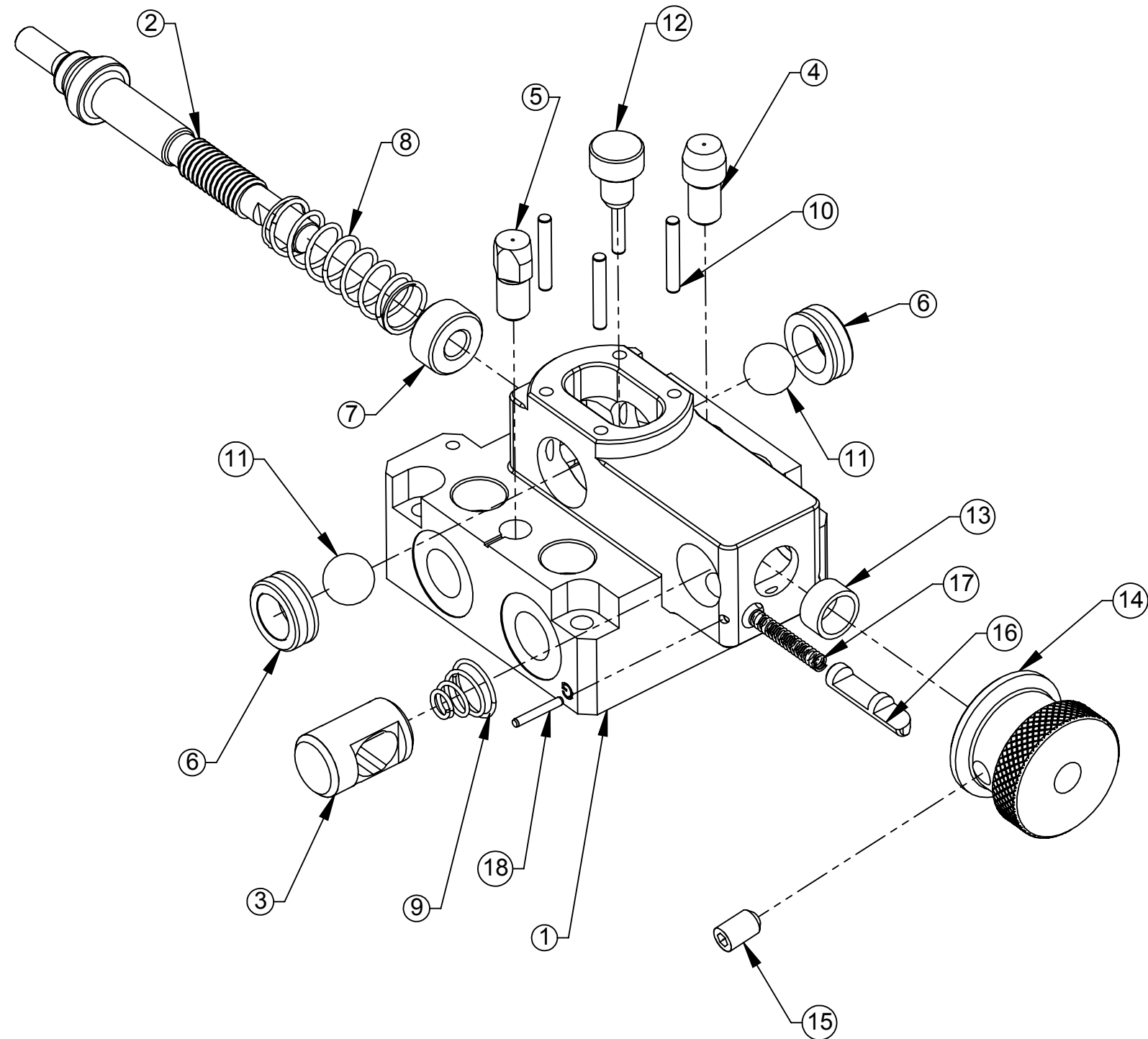


1031 Goodworth Drive, Apex, NC 27539, USA
 Tel: +1.919.772.0115 Email: info@ati-ia.com
 Fax: +1.919.772.8259 www.ati-ia.com
 ISO 9001 Registered Company

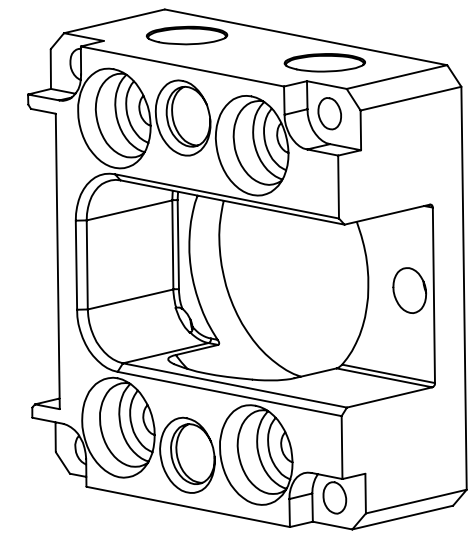
PROPERTY OF ATI INDUSTRIAL AUTOMATION, INC. NOT TO BE REPRODUCED IN ANY MANNER EXCEPT ON ORDER OR WITH PRIOR WRITTEN AUTHORIZATION OF ATI.

DRAWN BY: E. Donkor 1/10/2014		TITLE	
CHECKED BY: D. Norton 1/13/2014		Manual Coupler with Quick Action Screw Lock Drawing	
PROJECT # 140108-1	SHEET 1 OF 2	SCALE 1:1	SIZE B
DRAWING NUMBER 9630-20-MC16-E-NP		REVISION 02	

Rev.	Description	Initiator	Date
-	See Sheet1	-	-



9122-016M-000-E
MC016 Manual Coupler Base Master - Ports Removed



9122-016T-000-E
MC016 Manual Coupler Base Tool with (4) G 1/8 Ports

NOTES: UNLESS OTHERWISE SPECIFIED.

DO NOT SCALE DRAWING. ALL DIMENSIONS ARE IN MILLIMETERS.



3rd ANGLE PROJECTION



1031 Goodworth Drive, Apex, NC 27539, USA
Tel: +1.919.772.0115 Email: info@ati-ia.com
Fax: +1.919.772.8259 www.ati-ia.com
ISO 9001 Registered Company

PROPERTY OF ATI INDUSTRIAL AUTOMATION, INC. NOT TO BE REPRODUCED IN ANY MANNER EXCEPT ON ORDER OR WITH PRIOR WRITTEN AUTHORIZATION OF ATI.

DRAWN BY: E. Donkor 1/10/2014		TITLE	
CHECKED BY: D. Norton 1/13/2014		Manual Coupler with Quick Action Screw Lock Drawing	
PROJECT # 140108-1	SHEET 2 OF 2	SCALE 1:1	SIZE B
		DRAWING NUMBER	REVISION
		9630-20-MC16-E-NP	02