

Rev.	Description	Initiator	Date
04	ECO 18784: Sheet 1: Added 3490-0010005-01 to BOM Table. Lower left views: (50) was 14.3 & (59) was 28.9.	TBC	3/6/2020

Valve Adapters with Double Solenoid and 1/4" NPT Air Port

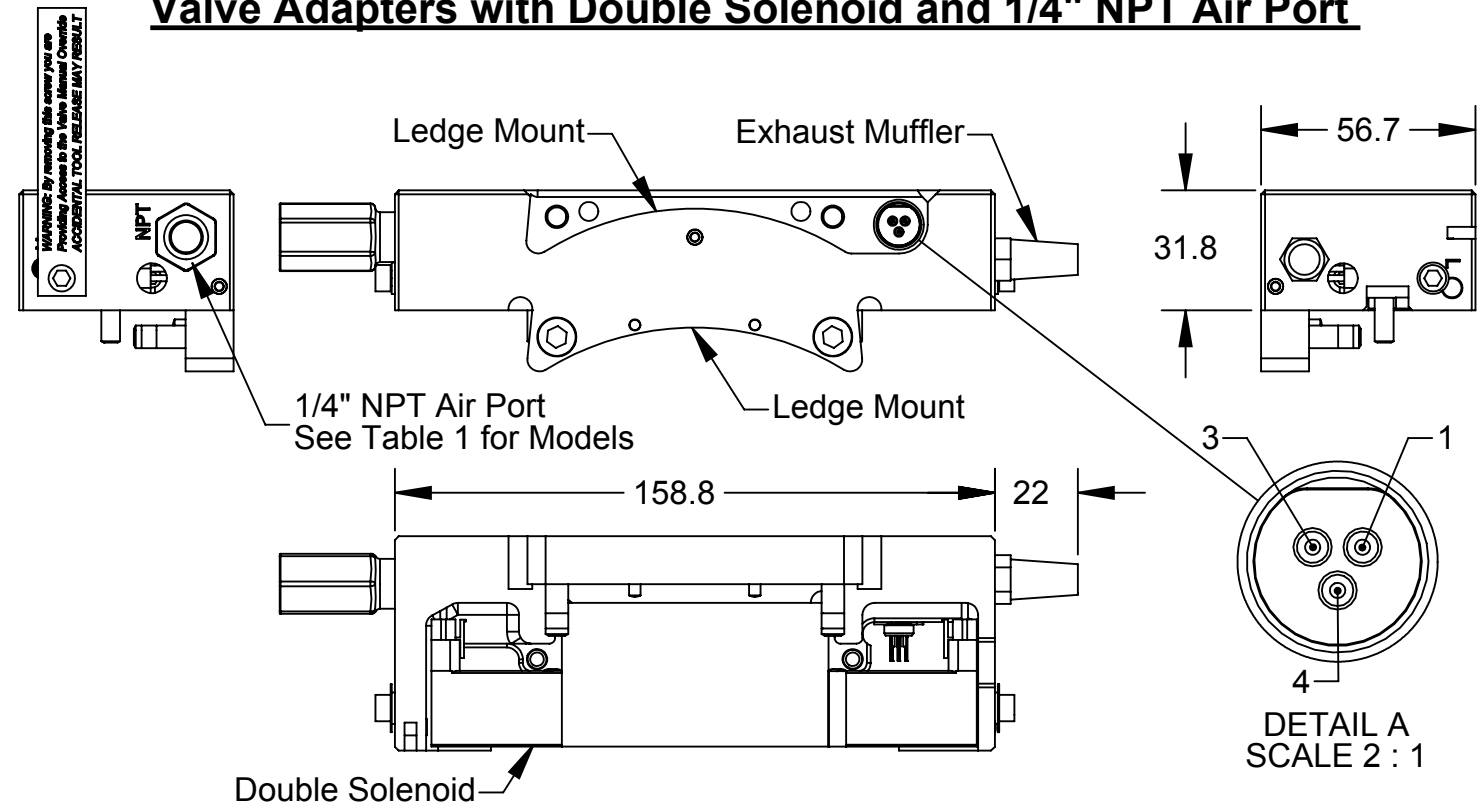
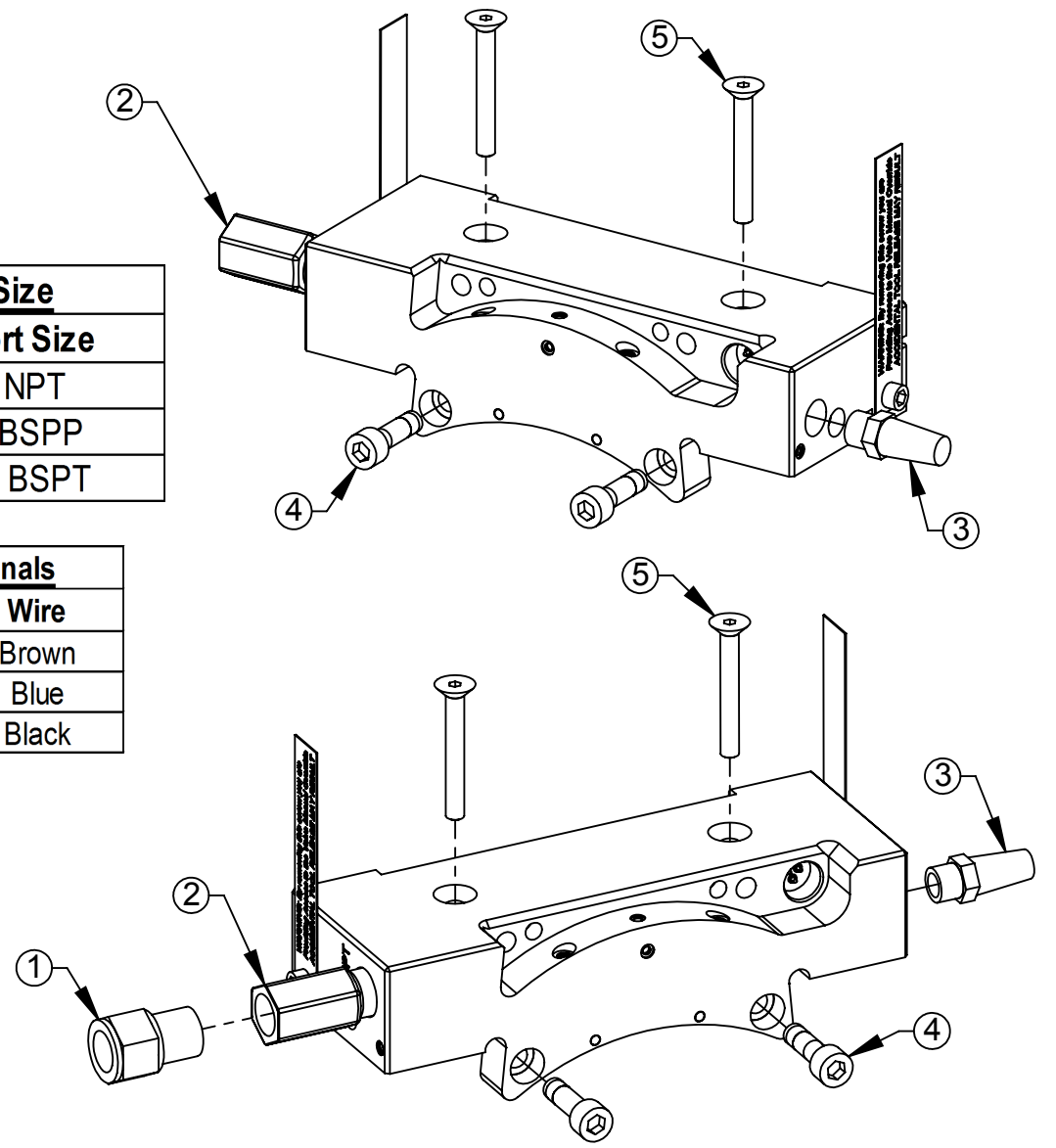


Table 1: Valve Adapter Port Size

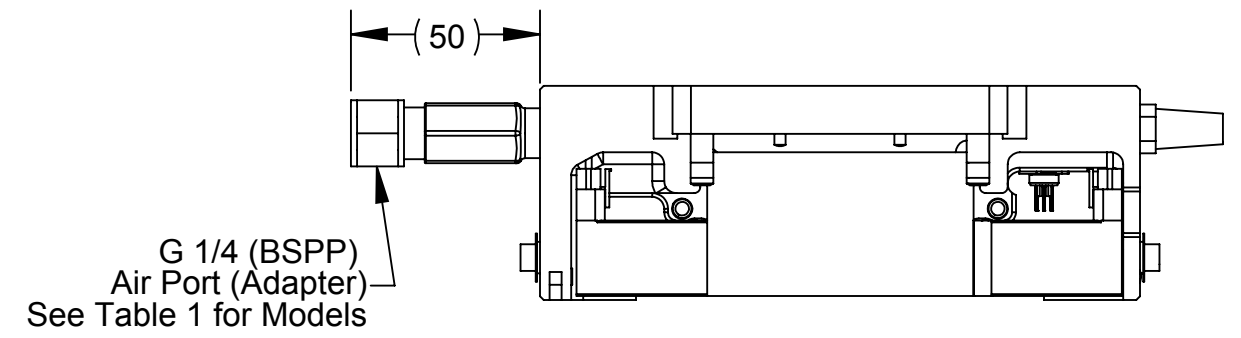
Valve Adapter Model	Air Port Size
9121-JT2-M	1/4" NPT
9121-JU2-M	G 1/4 BSPP
9121-JP4-M	Rc 1/4 BSPT

Table 2: 3-Pin Valve Pin Block Signals

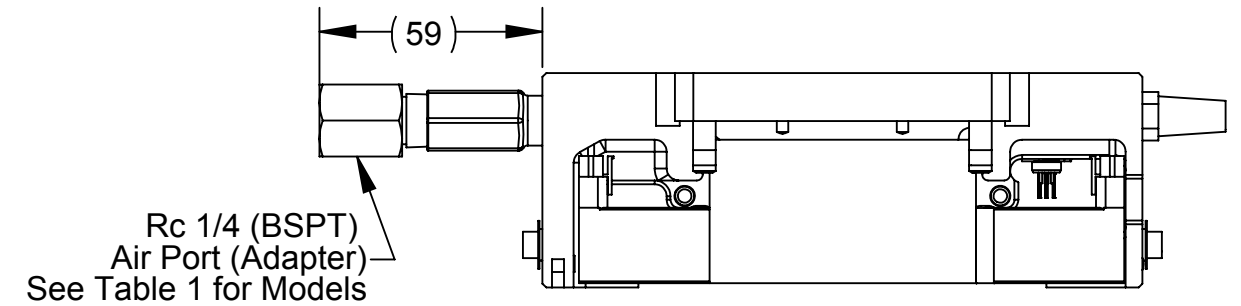
Pin	Signal	Wire
1	Unlatch (+19-29 VDC)	Brown
3	0 VDC	Blue
4	Latch (+19-29 VDC)	Black



Valve Adapters with Double Solenoids and G 1/4 (BSPP) Air Ports



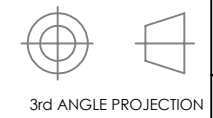
Valve Adapters with Double Solenoids and Rc 1/4 (BSPT) Air Ports



ITEM NO.	QTY	PART NUMBER	DESCRIPTION
1	1	3405-1030005-01	Fitting, Adapter, 1/4NPT to G1/4
	1	3405-1030008-01	Adapter, 1/4 NPT Male x Rc 1/4 Female
2	1	3490-0010005-01	Air Filter, 1/4 NPT Male X 1/4 NPT Female
3	1	3490-1010002-00	Conical Breather 1/8 NPT
4	2	3500-1066020-15A	M6-1 x 20mm SHCS, Blue, Pre-Applied
5	2	3500-1264040-15	M5 x 40mm SFHCS, Blue Dyed Magni-565

- Notes:
1. Valve Adapter to Tool Changer mounting is shown on Sheet 2.
 2. Pneumatic and Electrical Schematic are shown on Sheet 3.
 3. Other models are covered in the 9620-20-C-Jxx Valve adapter with a Double Solenoid Valve Pass Through manual.

NOTES: UNLESS OTHERWISE SPECIFIED.
DO NOT SCALE DRAWING. ALL DIMENSIONS ARE IN MILLIMETERS.

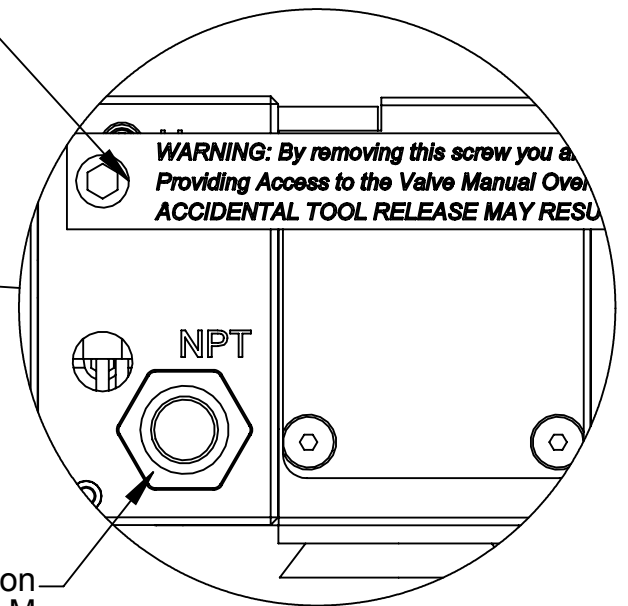
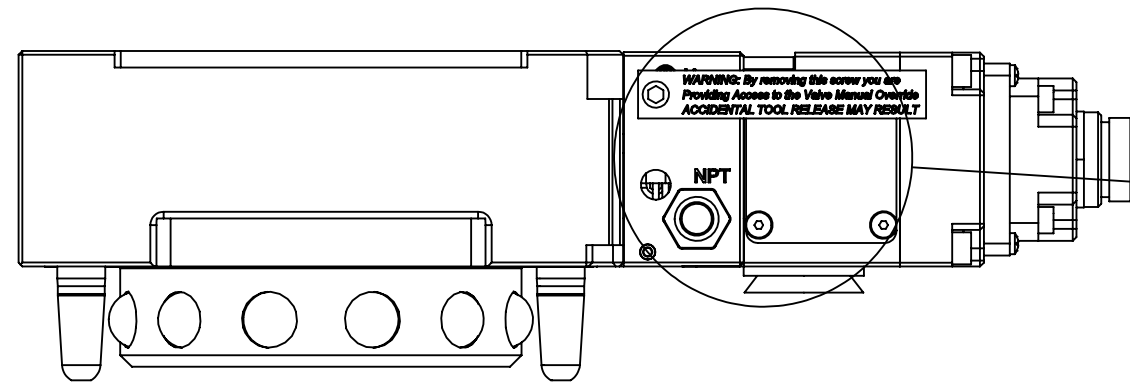
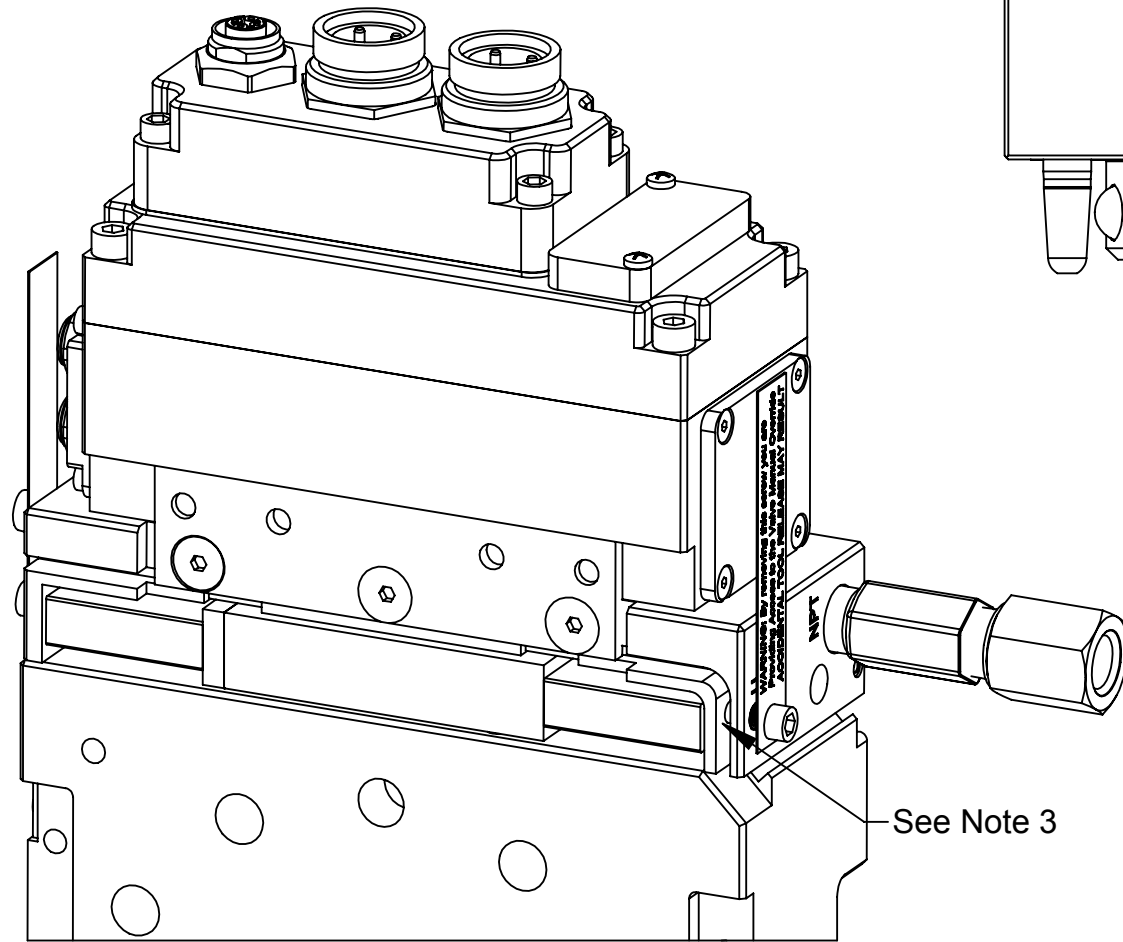


1031 Goodworth Drive, Apex, NC 27539, USA
Tel: +1.919.772.0115 Email: info@ati-ia.com
Fax: +1.919.772.8259 www.ati-ia.com
ISO 9001 Registered Company

PROPERTY OF ATI INDUSTRIAL AUTOMATION, INC. NOT TO BE REPRODUCED IN ANY MANNER EXCEPT ON ORDER OR WITH PRIOR WRITTEN AUTHORIZATION OF ATI.

DRAWN BY: J. Handy, 1/7/16		TITLE	
CHECKED BY: W Berrocal, 9/8/16		QC-210 Valve Adapter with Double Solenoid, Valve Pass Through	
PROJECT #	SHEET 1 OF 3	SCALE	SIZE
		1:2	B
DRAWING NUMBER		REVISION	
9630-20-Jxx Dou Sol Pas Thru QC210		03	

WARNING
 Unlatch Valve Manual Override Access
 Latch Valve Manual Override Access (Other side)
 Supplied w/ Cover Screw and Warning Label
 (See Note 1)



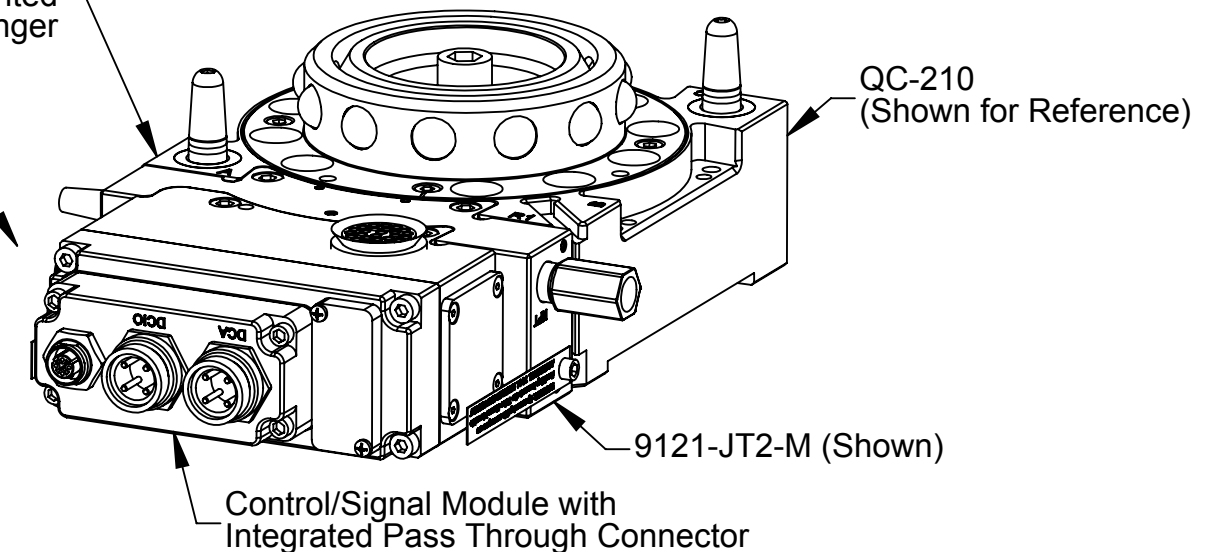
1/4 NPT Air Supply Connection
 (9121-JU2-M and 9121-JP4-M
 models supplied with adapter fitting)

DETAIL A
 SCALE 1 : 1

The valve adapter and
 control/signal module are mounted
 to Flat A on the Tool Changer

The Integrated Sensor Cables for Locked,
 Unlocked and Ready-to-Lock inputs are
 supplied with the base tool changer package.

See Note 3



Notes:
 1. **WARNING: Tool Release Will Occur with actuation of the Unlatch Valve Manual Override. Use of the valve manual override is restricted to contingency situations. The tool changer and associated tool should be in a stand or storage location prior to actuation of the manual override.**

NOTICE: Actuation of valve override buttons requires very little travel (~1mm) and only a small amount of force. Applying excess force can damage the solenoid or cause override button to stick in one position. Use non-sharp object, similar to ball nose 2mm Allen key, to gently depress the override button; an air release should be heard when the solenoid is activated.

2. The valve adapters with double solenoid are designed to mount to QC-113, QC-210, QC-213 Tool Changers and GL6L and GL7L Utility Couplers.
 3. The valve adapters with double solenoid and valve pass through are designed to be integrated with specific models of control/signal modules with a valve connector and provide routing for the ready to lock sensor cable from the Tool Changer or Utility Coupler to the control/signal module.

NOTES: UNLESS OTHERWISE SPECIFIED.

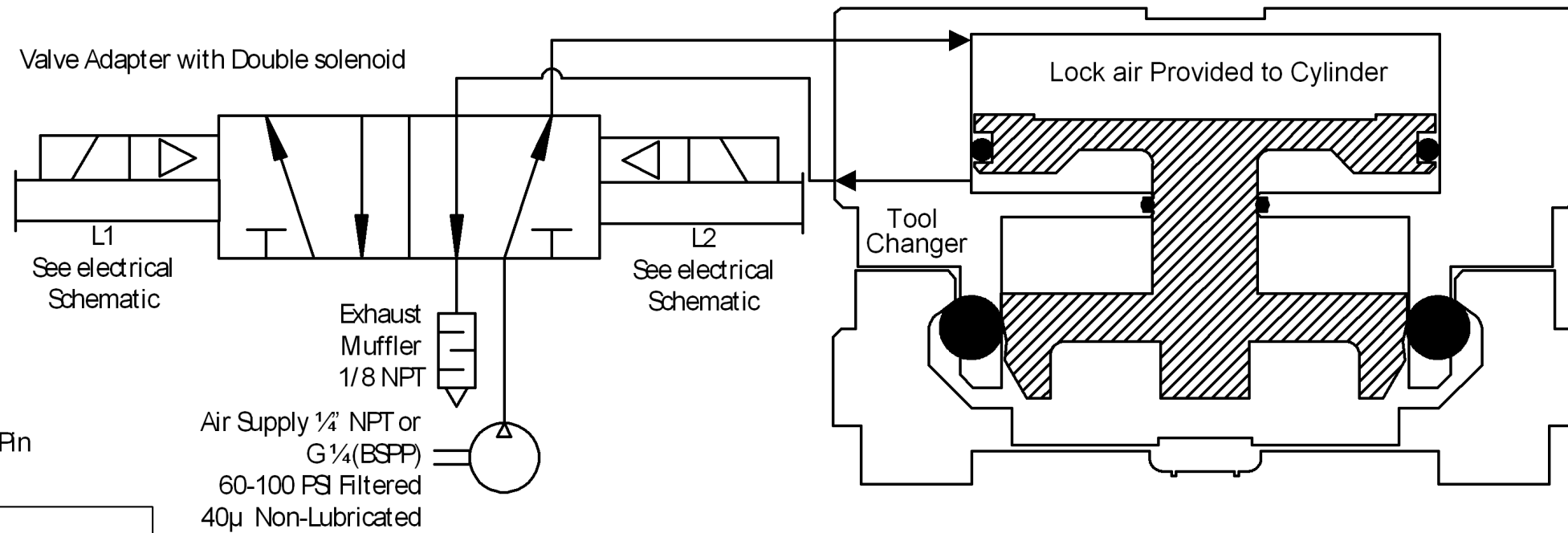
DO NOT SCALE DRAWING. ALL DIMENSIONS ARE IN MILLIMETERS.



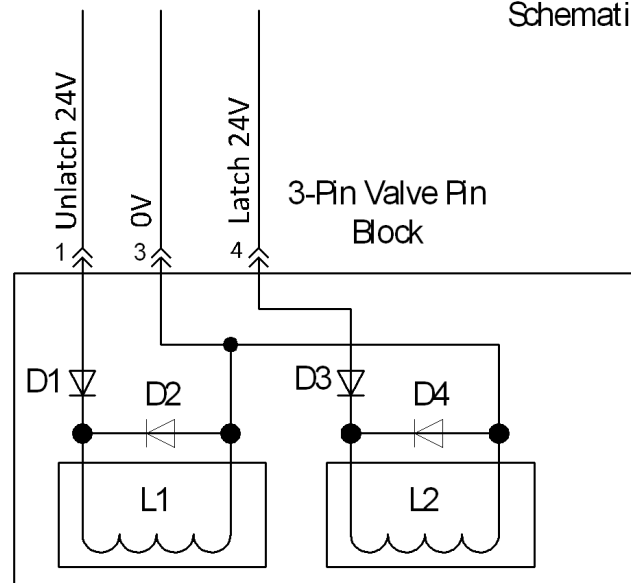
3rd ANGLE PROJECTION

		1031 Goodworth Drive, Apex, NC 27539, USA Tel: +1.919.772.0115 Email: info@ati-ia.com Fax: +1.919.772.8259 www.ati-ia.com ISO 9001 Registered Company			
		PROPERTY OF ATI INDUSTRIAL AUTOMATION, INC. NOT TO BE REPRODUCED IN ANY MANNER EXCEPT ON ORDER OR WITH PRIOR WRITTEN AUTHORIZATION OF ATI.			
DRAWN BY: J. Handy, 1/7/16 CHECKED BY: W Berrocal, 9/8/16		TITLE QC-210 Valve Adapter with Double Solenoid, Valve Pass Through			
PROJECT #	SHEET 2 OF 3	SCALE	SIZE	DRAWING NUMBER	REVISION
		1:2	B	9630-20-Jxx Dou Sol Pas Thru QC210	03

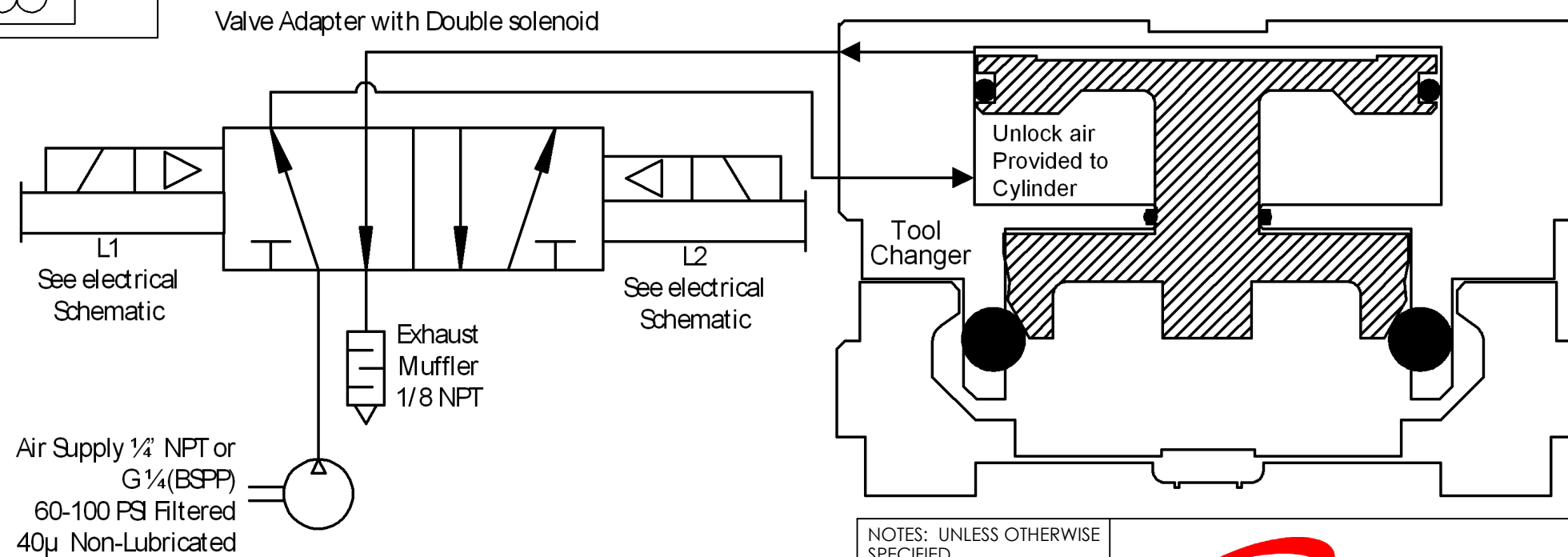
Double Solenoid shown with Energized Lock Solenoid (L2)



Electrical Schematic



Double Solenoid shown with Energized Unlock Solenoid (L1)



- Notes:**
- The valve adapters utilize a double solenoid 5/2 valve. The valve requires supply voltage between 19-29V. The Valve CV is 1.1.
 - The valve must be supplied clean, dry, non-lubricated air at 60 to 100 psi (4.1-6.9 Bar) and filtered at 40 microns or better. The valve will NOT operate correctly if insufficient air pressure is supplied.
 - It is critical that the exhaust mufflers are not restricted. As part of a preventative maintenance program, periodically inspect and/or replace the exhaust mufflers.

NOTES: UNLESS OTHERWISE SPECIFIED.

DO NOT SCALE DRAWING. ALL DIMENSIONS ARE IN MILLIMETERS.



3rd ANGLE PROJECTION



1031 Goodworth Drive, Apex, NC 27539, USA
Tel: +1.919.772.0115 Email: info@ati-ia.com
Fax: +1.919.772.8259 www.ati-ia.com
ISO 9001 Registered Company

PROPERTY OF ATI INDUSTRIAL AUTOMATION, INC. NOT TO BE REPRODUCED IN ANY MANNER EXCEPT ON ORDER OR WITH PRIOR WRITTEN AUTHORIZATION OF ATI.

DRAWN BY: J. Handy, 1/7/16		TITLE	
CHECKED BY: W Berrocal, 9/8/16		QC-210 Valve Adapter with Double Solenoid, Valve Pass Through	
PROJECT #	SHEET 3 OF 3	SCALE	REVISION
		1:5	03
SIZE	DRAWING NUMBER		
B	9630-20-Jxx Dou Sol Pas Thru QC210		