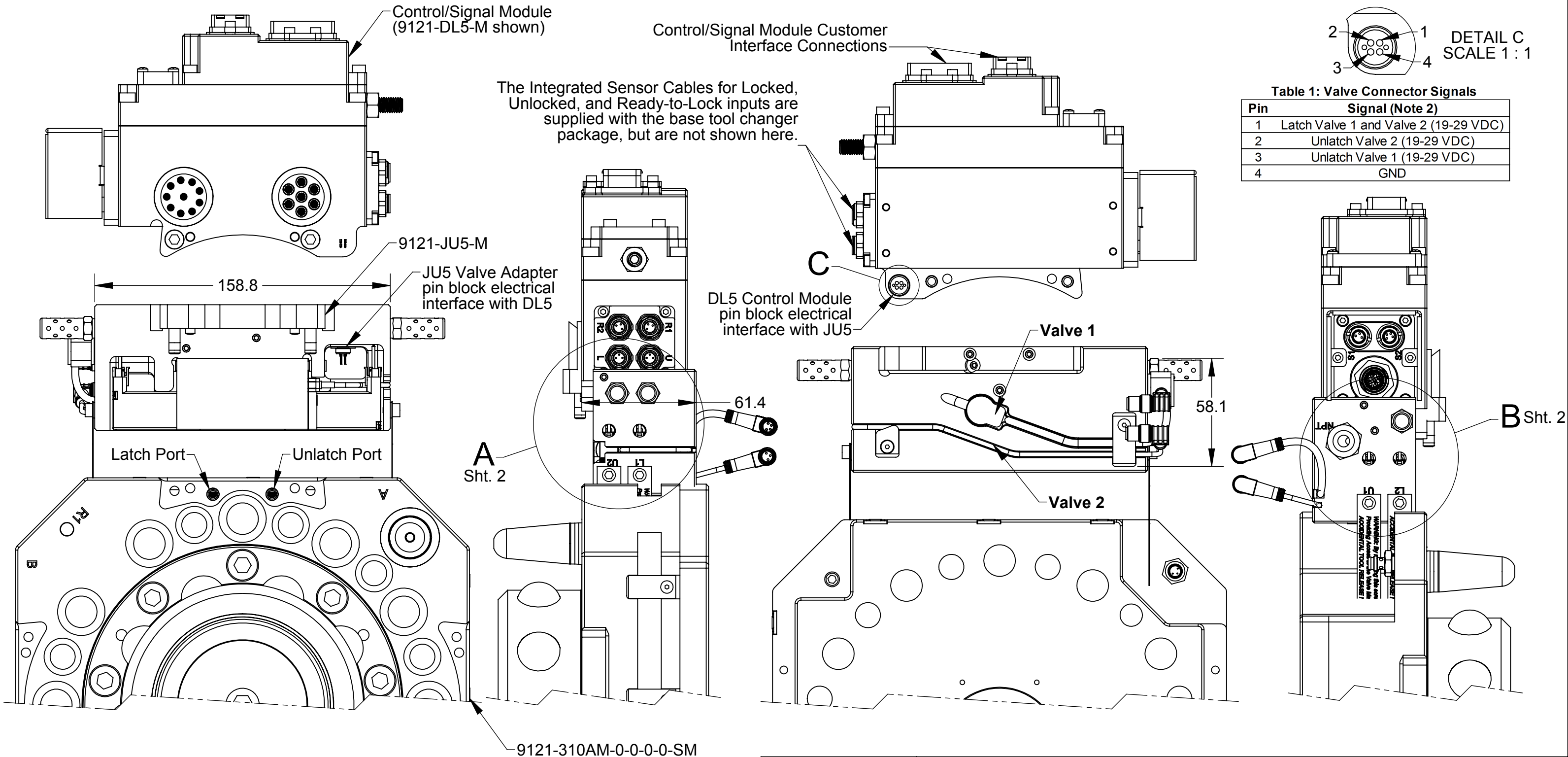


Rev.	Description	Initiator	Date
03	Eco 17321; Sht 3, View title for Pressure Sensor was Proximity Sensor.	LJH	10/17/18



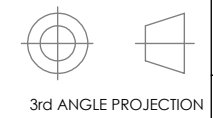
**Table 1: Valve Connector Signals**

Pin	Signal (Note 2)
1	Latch Valve 1 and Valve 2 (19-29 VDC)
2	Unlatch Valve 2 (19-29 VDC)
3	Unlatch Valve 1 (19-29 VDC)
4	GND

- General Notes:**
- Refer to Sheet 2 for functional notes and information concerning the connector pin designations and use of the manual override.
  - Refer to Sheet 3 for the pneumatic circuit diagram and operational details.
  - The 9121-310AM-JU5DL5-0-0-0-0-SM shown above includes:
    - 9121-310AM-0-0-0-0-SM: QC-310 Tool Changer, Integrated PNP Sensors w/ LEDs
    - 9121-JU5-M: Valve Adapter, Dual Double Solenoid Valves, G, QC-310, w/ Proximity and Pressure Sensor
    - 9121-DL5-M: PL d Compliant Profinet Control Module
  - Valve Adapter spacer block 9121-JR4-T must be used opposite the JU5-M on the Tool Side of the Tool Changer.

NOTES: UNLESS OTHERWISE SPECIFIED.

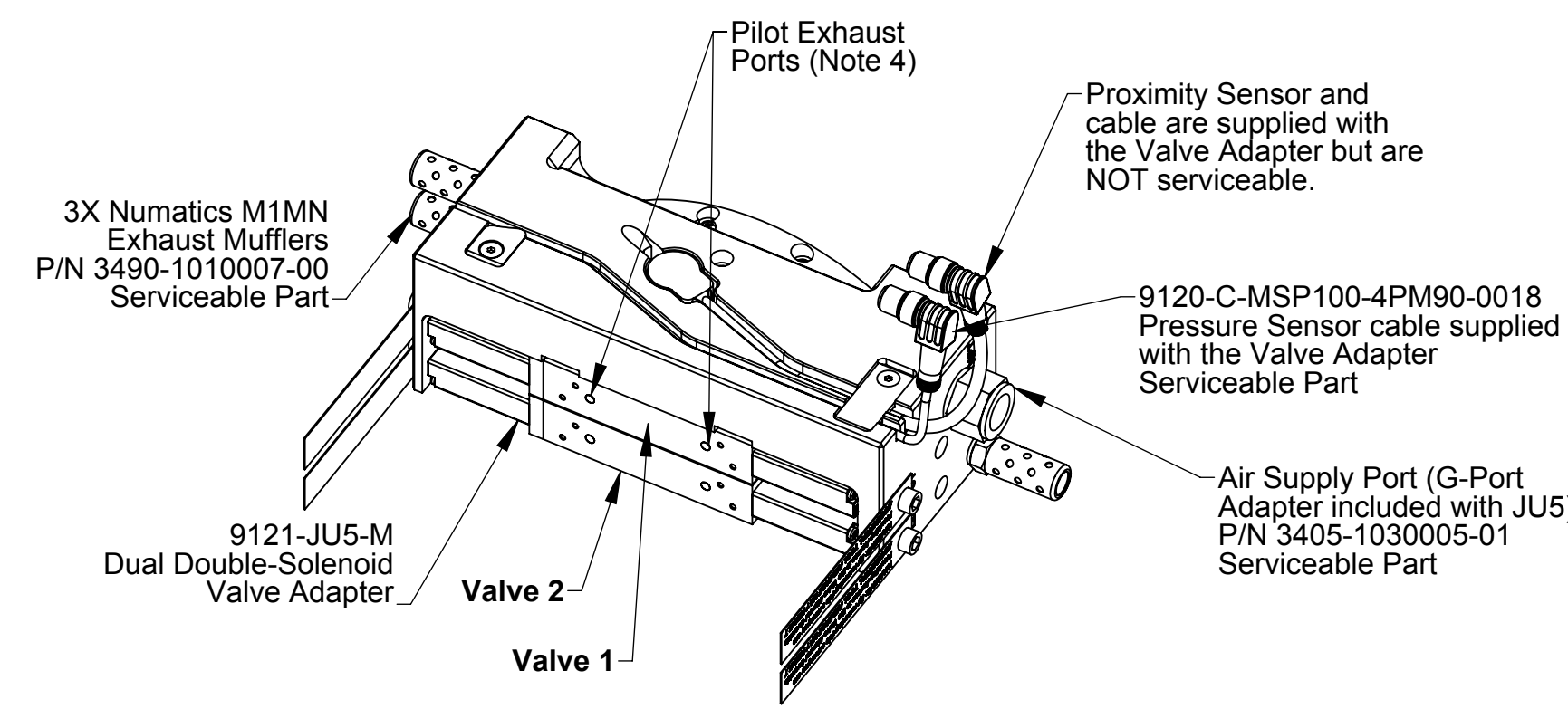
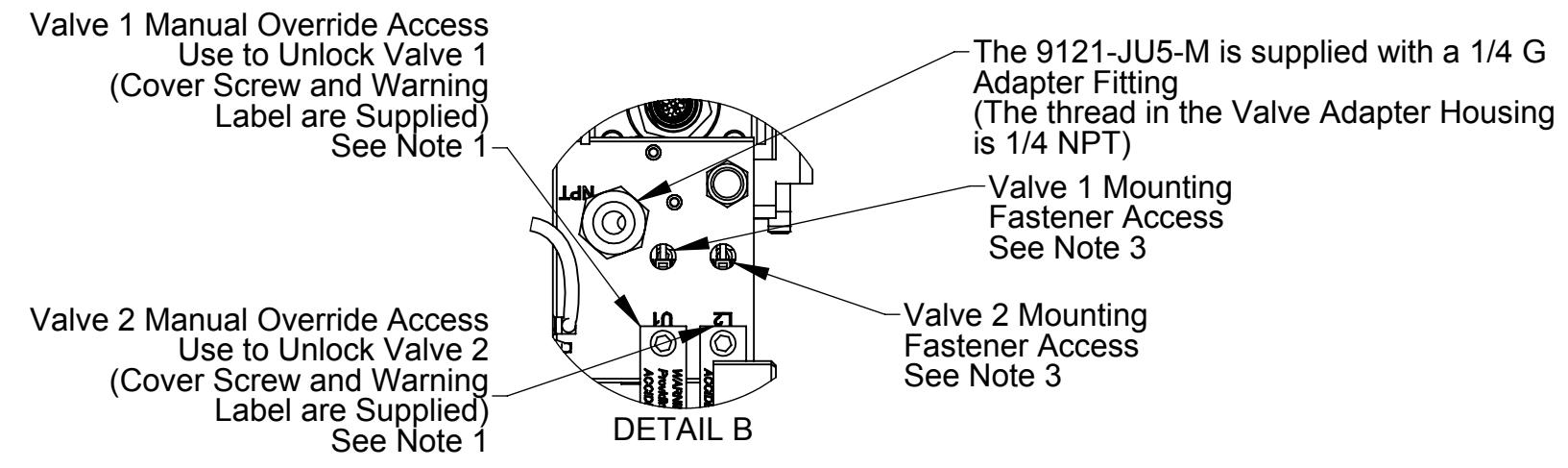
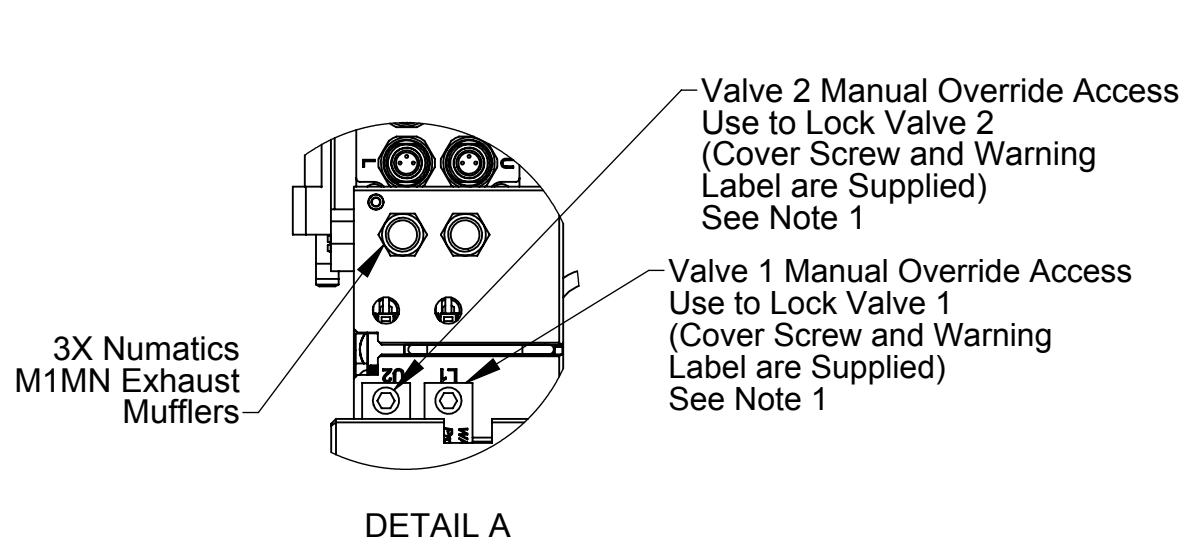
DO NOT SCALE DRAWING. ALL DIMENSIONS ARE IN MILLIMETERS.



1031 Goodworth Drive, Apex, NC 27539, USA  
Tel: +1.919.772.0115 Email: info@ati-ia.com  
Fax: +1.919.772.8259 www.ati-ia.com  
ISO 9001 Registered Company

PROPERTY OF ATI INDUSTRIAL AUTOMATION, INC. NOT TO BE REPRODUCED IN ANY MANNER EXCEPT ON ORDER OR WITH PRIOR WRITTEN AUTHORIZATION OF ATI.

DRAWN BY: J. Bunting 6/25/15		TITLE	
CHECKED BY: W. Berrocal 6/29/15		Valve Adapter, Dual Double Solenoid Valves, G, QC-310, w/Proximity and Pressure Sensor	
PROJECT # 130208-3	SHEET 1 OF 3	SCALE 1:2	SIZE B
DRAWING NUMBER 9630-20-JU5		REVISION 03	



**Notes:**

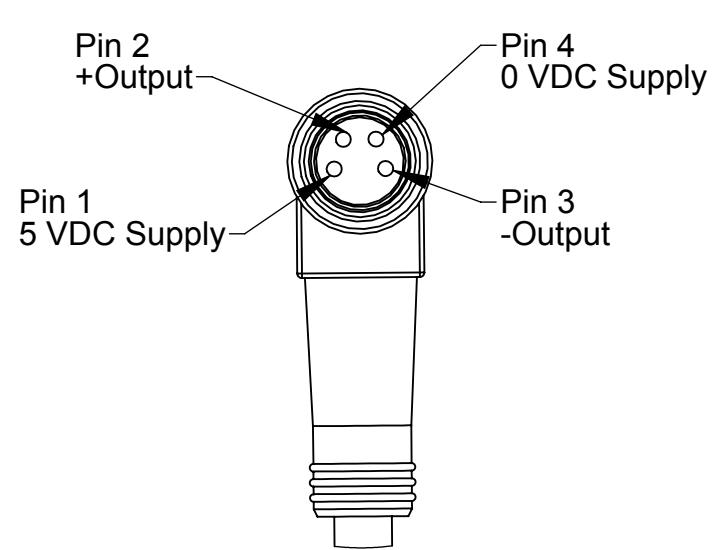
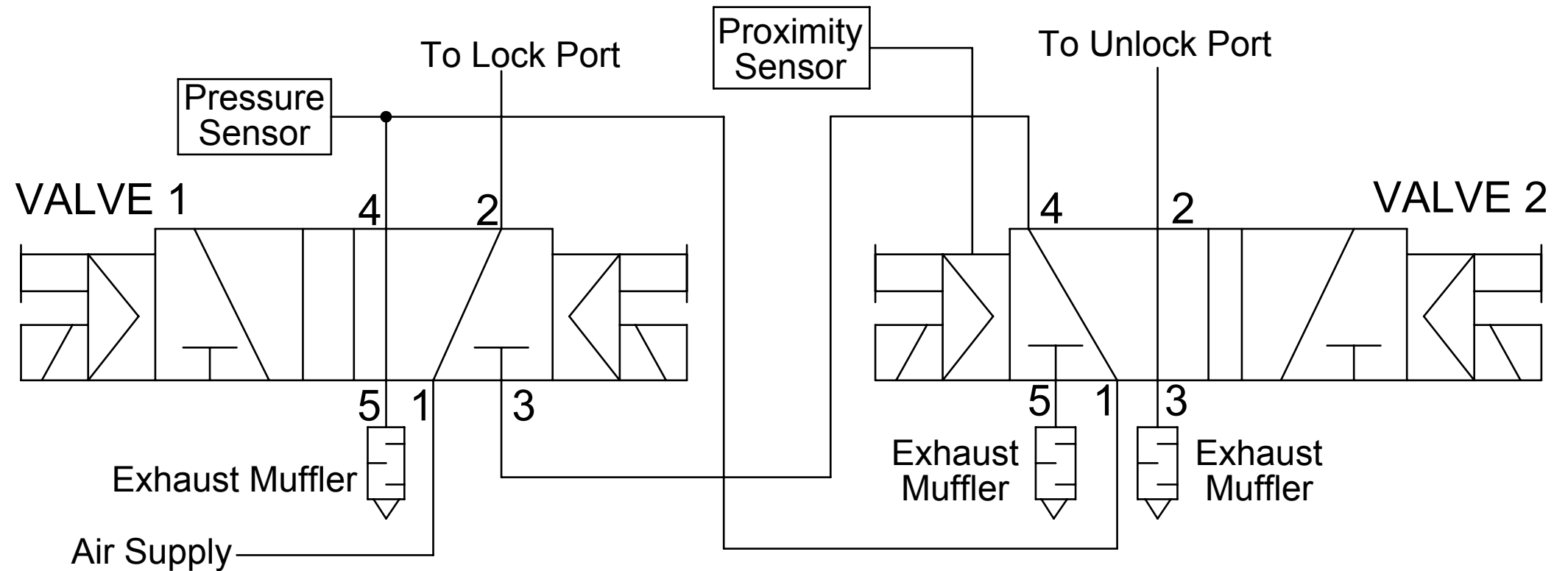
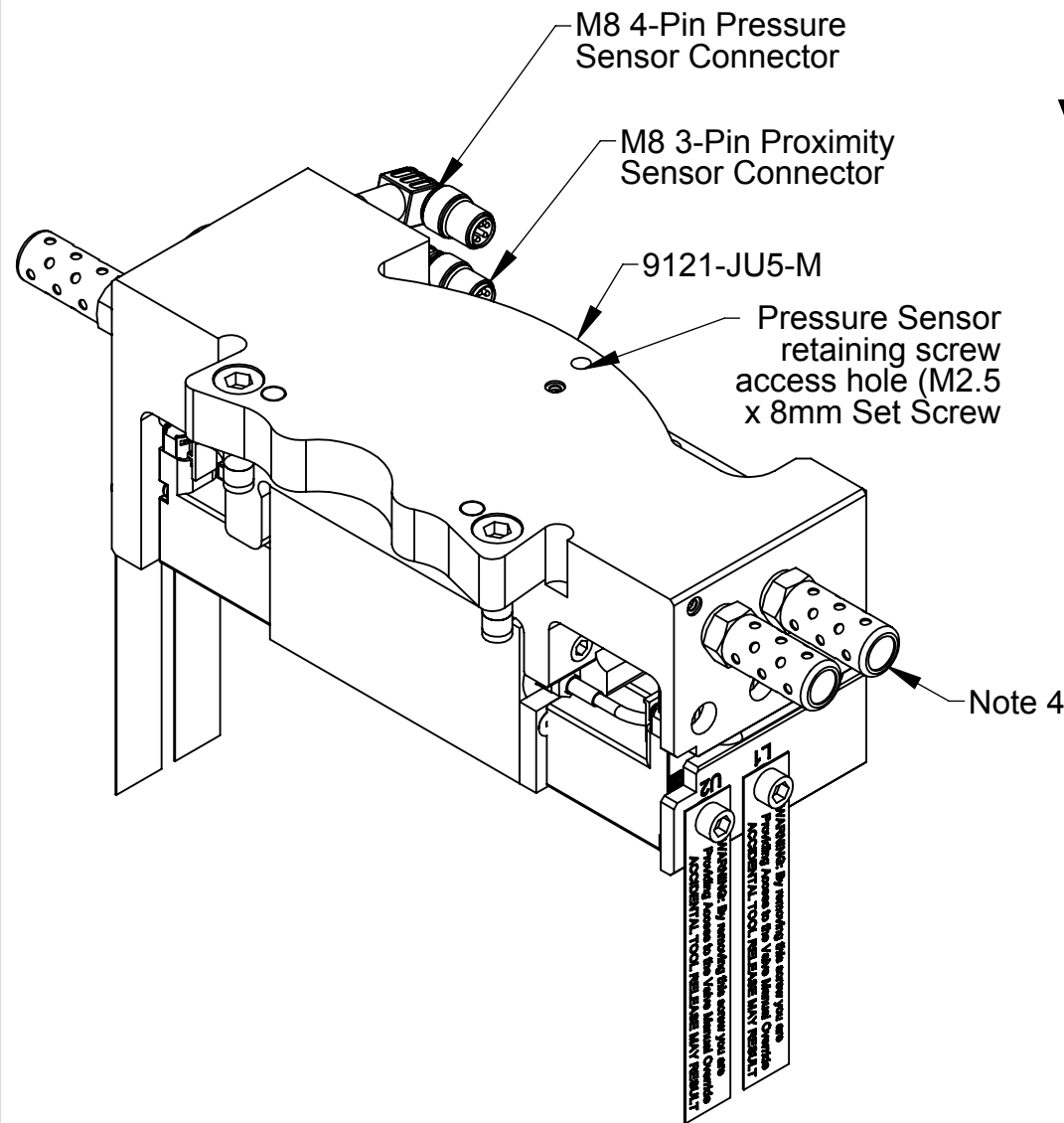
1. **WARNING: Tool Release Will Occur with the simultaneous actuation of the two Unlatch Valve Manual Overrides (U1 and U2).**  
Use of the valve manual override is restricted to contingency situations. The tool changer and associated tool should be in a secured location prior to actuation of the manual override.

- Insert a ball-end 2mm hex key or similar blunt object in the two locations shown and manually depress both valve manual overrides (must be depressed simultaneously). Replace the cover screws and warning labels when finished.
- Signals are sourced from the Control Module via the 4-Pin Block. The JU5 is designed to operate with a Control Module generating two independent Unlatch signals (i.e. dual channel) such as the 9121-DL5-M PL d Compliant Profinet Module.
  - The valve mounting access holes are to be used only in a valve replacement situation. A 3mm hex key is to be used to loosen the cone point set screws that retain the valve. Care should be taken to avoid damaging the valve solenoid connector during the valve removal process.
  - To ensure proper valve operation, do not block or restrict the Pilot Exhaust ports.

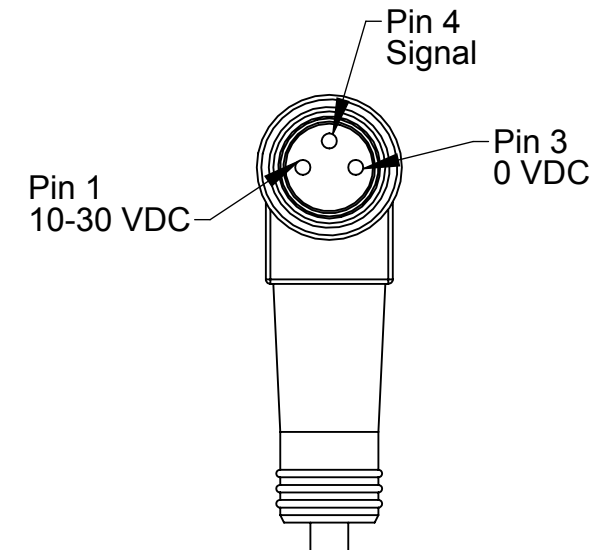
NOTES: UNLESS OTHERWISE SPECIFIED.  DO NOT SCALE DRAWING. ALL DIMENSIONS ARE IN MILLIMETERS.			1031 Goodworth Drive, Apex, NC 27539, USA Tel: +1.919.772.0115 Email: info@ati-ia.com Fax: +1.919.772.8259 www.ati-ia.com ISO 9001 Registered Company	
	DRAWN BY: J. Bunting 6/25/15 CHECKED BY: W. Berrocal 6/29/15		TITLE <b>Valve Adapter, Dual Double Solenoid Valves, G, QC-310, w/Proximity and Pressure Sensor</b>	
	PROJECT # 130208-3 SHEET 2 OF 3	SCALE 1:2	SIZE B	DRAWING NUMBER 9630-20-JU5
				REVISION 03

PROPERTY OF ATI INDUSTRIAL AUTOMATION, INC. NOT TO BE REPRODUCED IN ANY MANNER EXCEPT ON ORDER OR WITH PRIOR WRITTEN AUTHORIZATION OF ATI.

# 9121-JU5-M PNEUMATIC CIRCUIT (Note 1)



**Pressure Sensor Interface Connector**



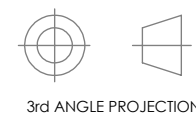
**Proximity Sensor Interface Connector**

**Notes:**

1. The 9121-JU5-M valve adapters pneumatically interlink two 5/2 valves to reduce the probability of an unintended tool unlock. With this design, the Tool Changer will unlock ONLY when BOTH valves are in the UNLATCH position. Note: Two independent Unlatch signals are required to energize the two valves and cause the Tool Changer to unlock. To lock the Tool Changer, a single Latch signal is provided to both valves.
2. The 9121-JU5-M Valve Adapter must be used with a Control Signal module that can support the pressure sensor and proximity sensor inputs generated by the JU5 (ex. 9121-DL5-M). Reference manual for detailed instructions on the operation of the JU5.
3. The valves must be supplied clean, dry, non-lubricated air at 60 to 100 psi (4.1-6.9 Bar) and filtered at 40 microns or better. NOTE: The valves will NOT operate correctly if insufficient air pressure is supplied.
4. It is critical that the exhaust mufflers are not restricted. As part of a preventative maintenance program, periodically inspect and/or replace the exhaust mufflers.

NOTES: UNLESS OTHERWISE SPECIFIED.

DO NOT SCALE DRAWING. ALL DIMENSIONS ARE IN MILLIMETERS.



3rd ANGLE PROJECTION

		1031 Goodworth Drive, Apex, NC 27539, USA Tel: +1.919.772.0115 Email: info@ati-ia.com Fax: +1.919.772.8259 www.ati-ia.com ISO 9001 Registered Company	
		PROPERTY OF ATI INDUSTRIAL AUTOMATION, INC. NOT TO BE REPRODUCED IN ANY MANNER EXCEPT ON ORDER OR WITH PRIOR WRITTEN AUTHORIZATION OF ATI.	
DRAWN BY: J. Bunting 6/25/15	CHECKED BY: W. Berrocal 6/29/15	TITLE Valve Adapter, Dual Double Solenoid Valves, G, QC-310, w/Proximity and Pressure Sensor	
PROJECT # 130208-3 SHEET 3 OF 3	SCALE 1:2	SIZE B	DRAWING NUMBER 9630-20-JU5 REVISION 03