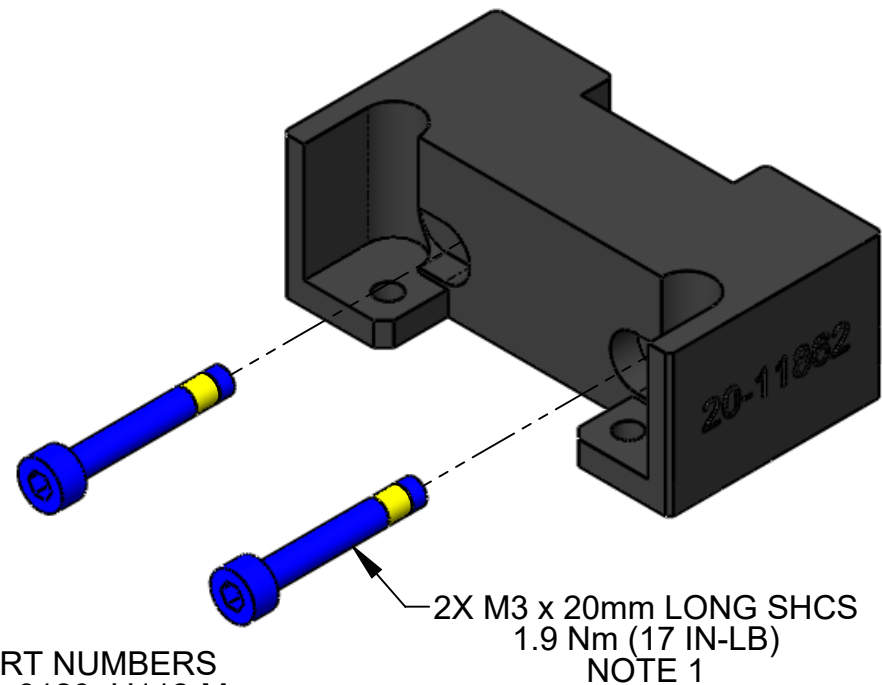
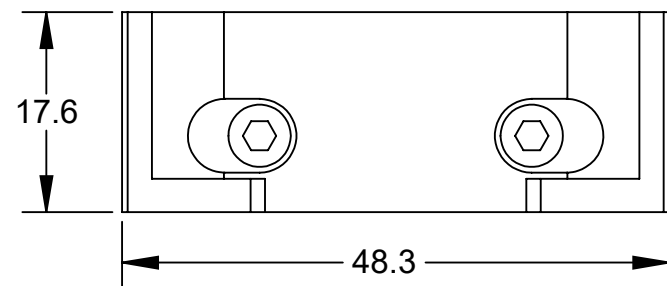
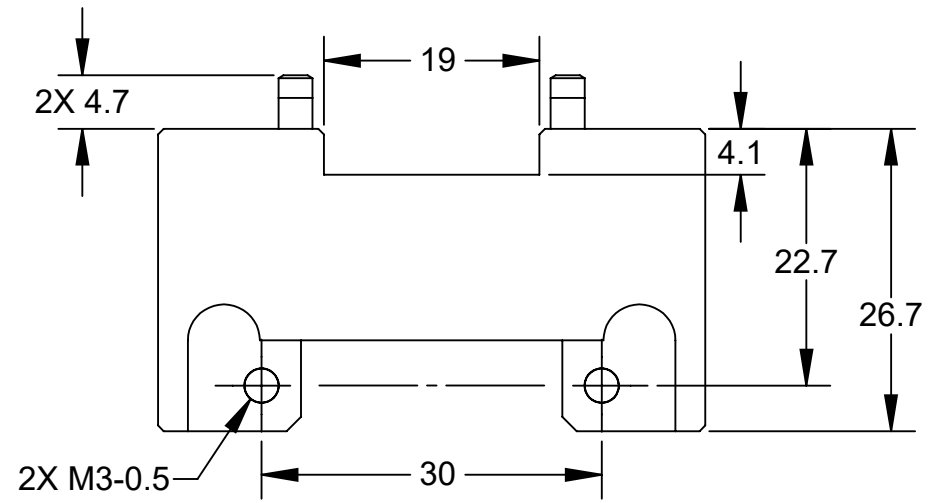


REV.	DESCRIPTION	INITIATOR	DATE
01P	INITIAL DRAWING	DCT	7/19/2023
02	DRAWING RELEASE	DCT	10/31/2023

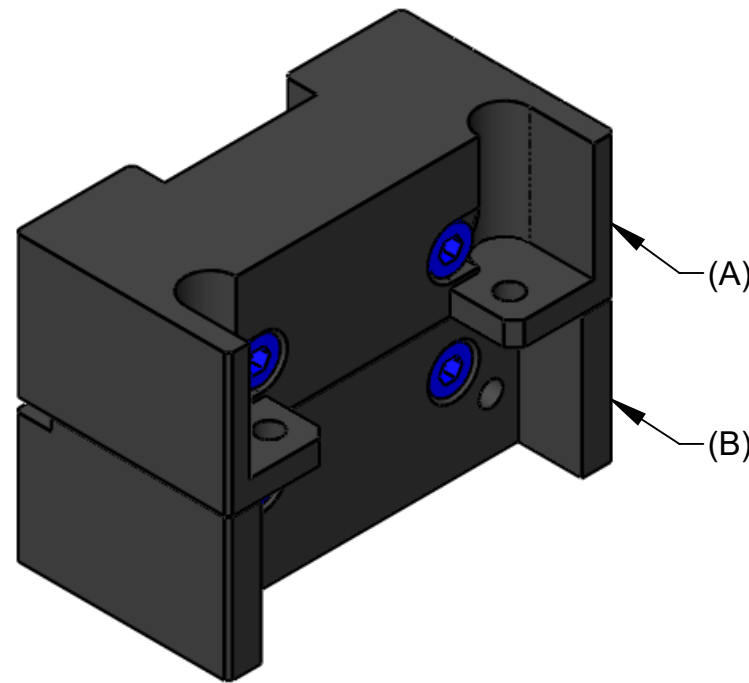
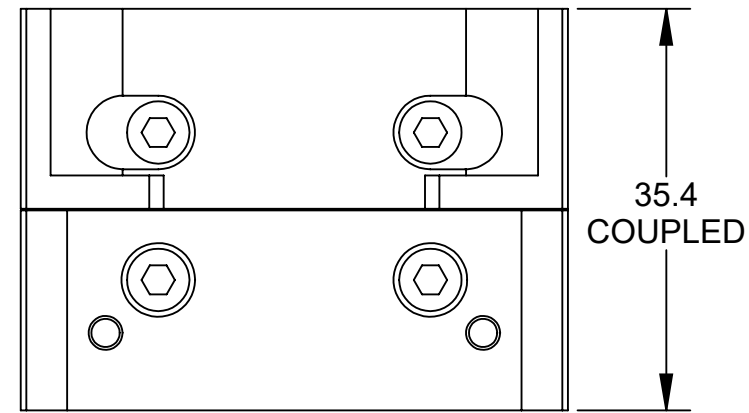
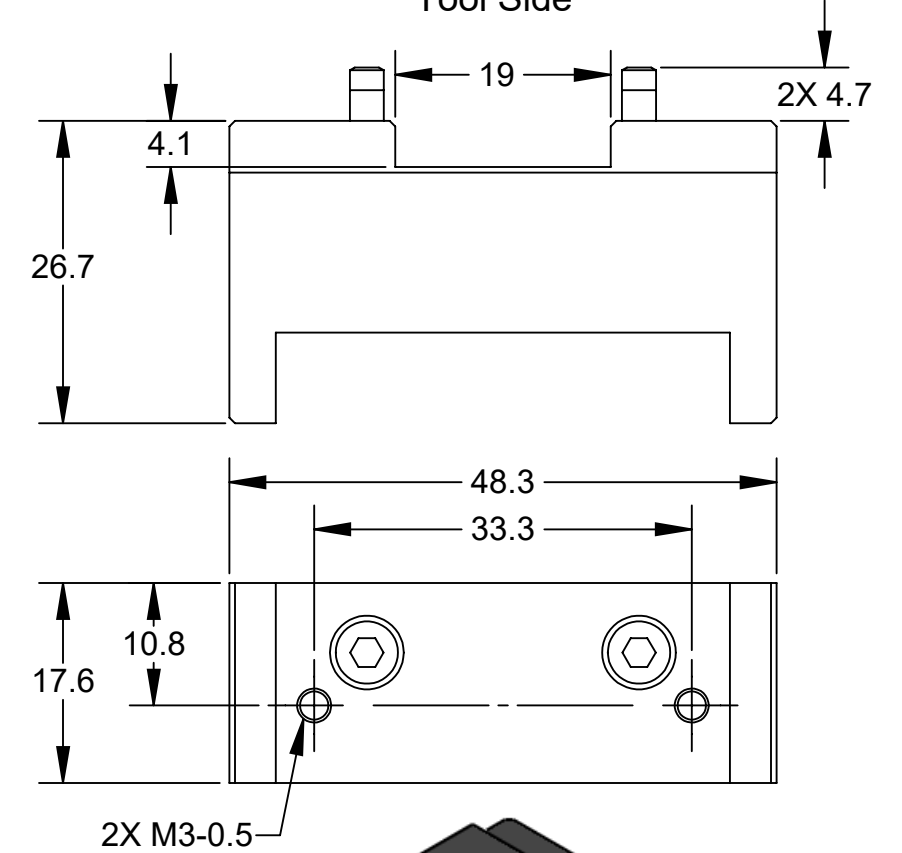
9120-JJ112-M
Master Side



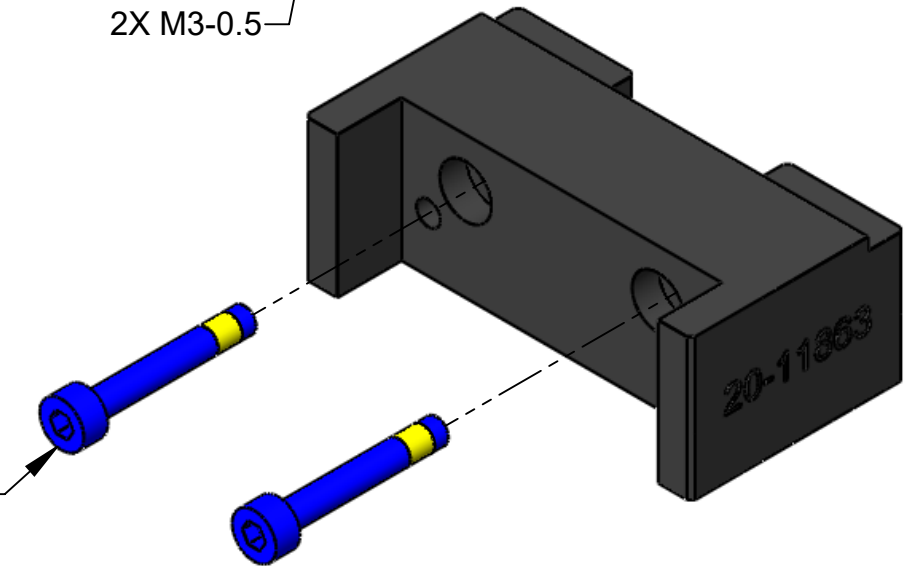
PART NUMBERS
(A) 9120-JJ112-M
(B) 9120-JJ112-T

NOTES:
1. FASTENERS SHIPPED LOOSE. CUSTOMER TO INSTALL AT SPECIFIED TORQUE

9120-JJ112-T
Tool Side

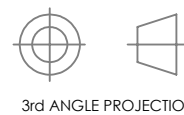


2X M3 x 20mm LONG SHCS
1.9 Nm (17 IN-LB)
NOTE 1



NOTES: UNLESS OTHERWISE SPECIFIED.

DO NOT SCALE DRAWING.
ALL DIMENSIONS ARE IN MILLIMETERS.



1031 Goodworth Drive, Apex, NC 27539, USA
Tel: +1.919.772.0115 www.ati-ia.com
Fax: +1.919.772.8259 ISO 9001 Registered Company

PROPERTY OF ATI INDUSTRIAL AUTOMATION, INC. NOT TO BE REPRODUCED IN ANY MANNER EXCEPT ON ORDER OR WITH PRIOR WRITTEN AUTHORIZATION OF ATI.

DRAWN BY: D. THOMAS, 5/10/23

CHECKED BY: J. WEAVER, 7/13/23

PROJECT # 191011-2 SHEET 1 OF 1

TITLE
Adapter Plate For K-Series Pattern on MC-50

SCALE	SIZE	DRAWING NUMBER	REVISION
1.5:1	B	9630-20-JJ112	02