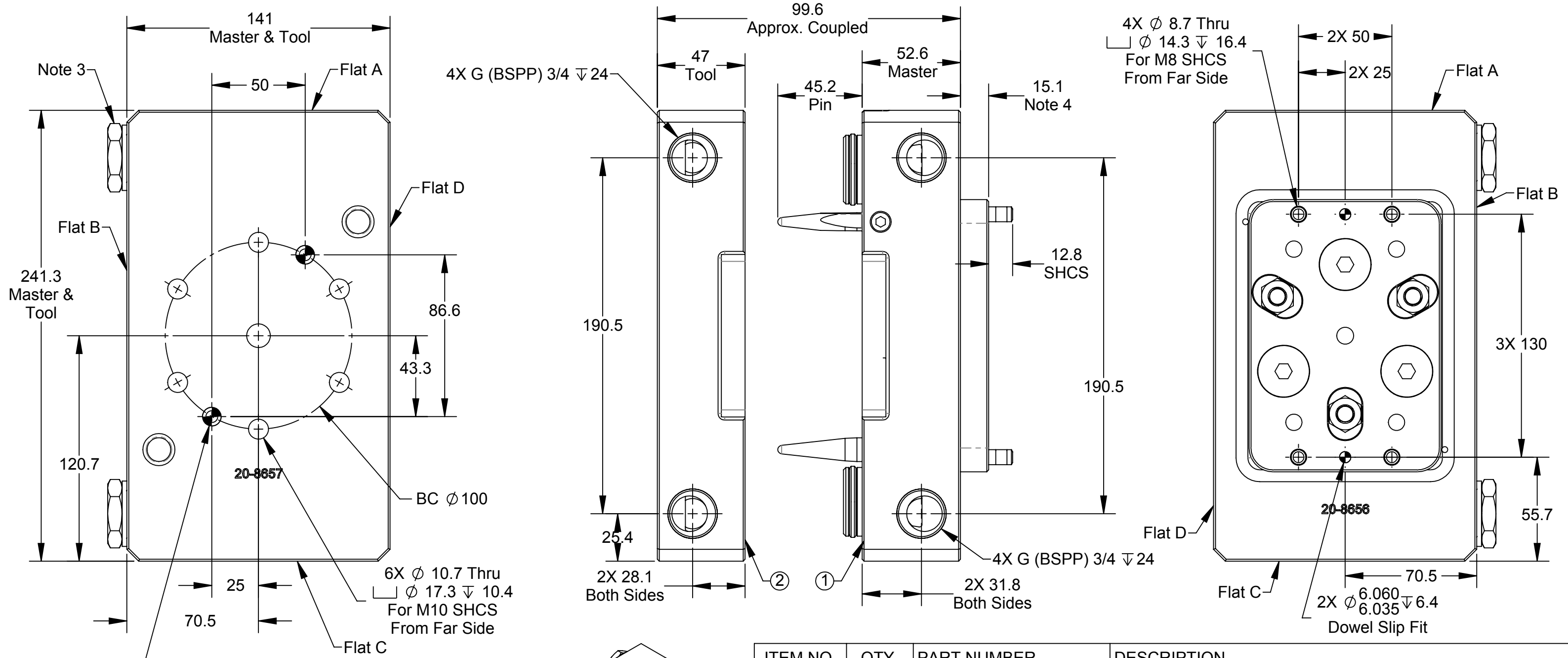
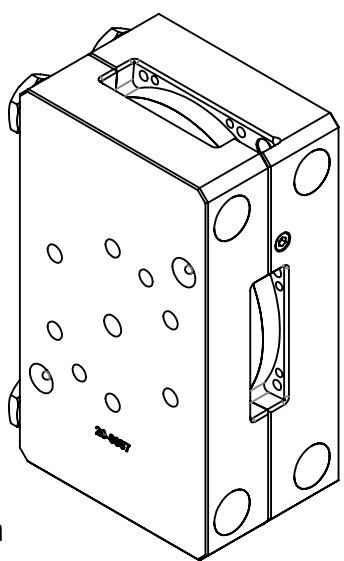


Rev.	Description	Initiator	Date
03	ECO 17831: Updated SHCS length to 12.8 was 22.8.	TBC	3/28/2019



- Notes:
1. Design is subject to change.
  2. Continuous coupling force must be maintained in order to keep Master and Tool engaged.
  3. 2X plugs provided on Master and Tool for unused air ports.
  4. Dimension shown is for uncompressed state. When compressed dimension is 12.5 mm.



ITEM NO.	QTY.	PART NUMBER	DESCRIPTION
1	1	9123-GL2PCM-0-0-0-0-E	GL2 Compliant Utility Coupler Master +/-4mm X-Y, 3 Degrees Angular, (2) 3/4" BSPP Pass Through Ports, Euro
2	1	9123-GL2PT-0-0-0-0-E	GL2 Utility Coupler Tool, (2) G 3/4" Pass Through (BSPP) Ports, Euro

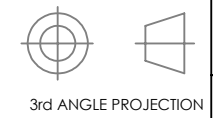
NOTES: UNLESS OTHERWISE SPECIFIED.  
DO NOT SCALE DRAWING. ALL DIMENSIONS ARE IN MILLIMETERS.



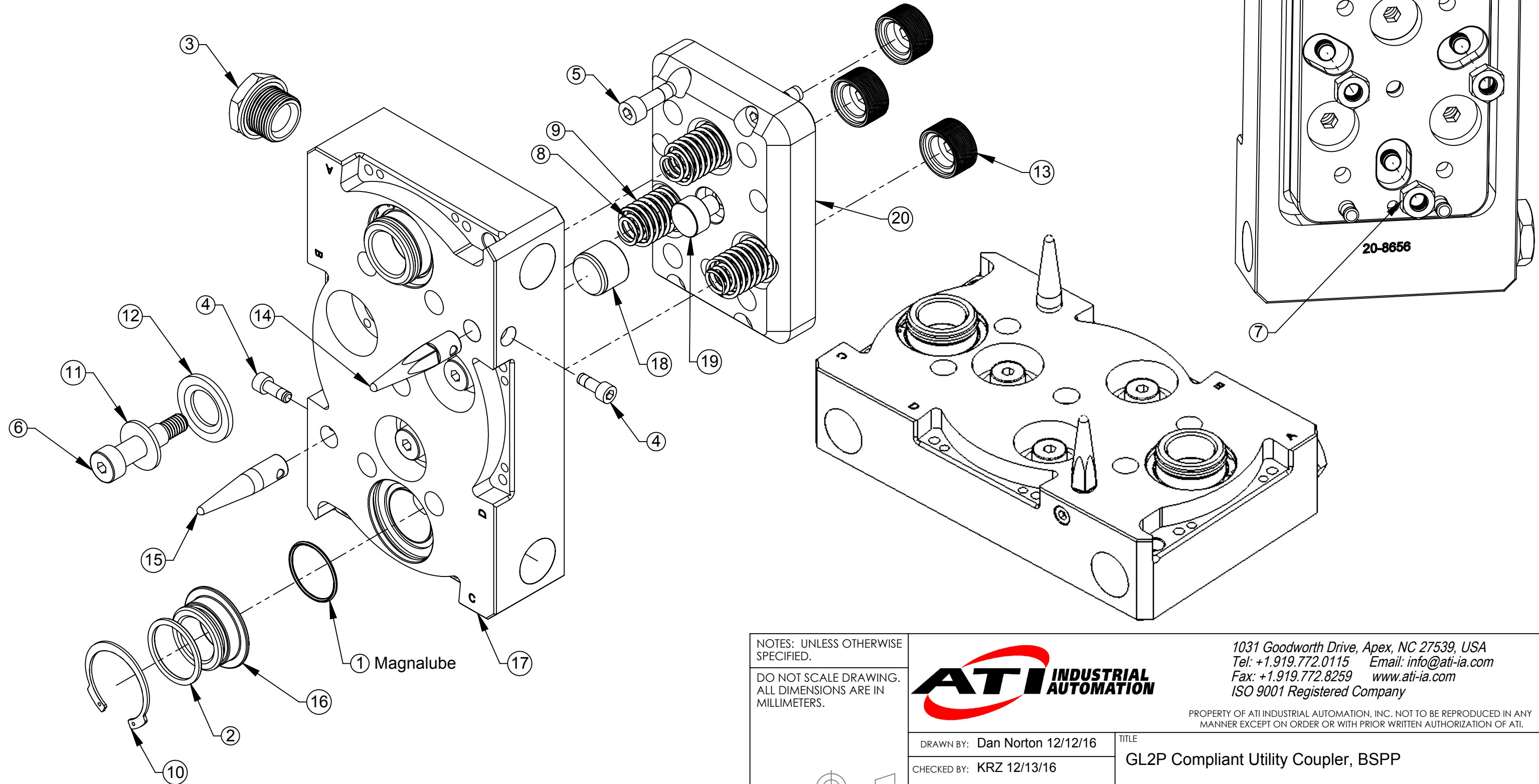
1031 Goodworth Drive, Apex, NC 27539, USA  
Tel: +1.919.772.0115 Email: info@ati-ia.com  
Fax: +1.919.772.8259 www.ati-ia.com  
ISO 9001 Registered Company

PROPERTY OF ATI INDUSTRIAL AUTOMATION, INC. NOT TO BE REPRODUCED IN ANY MANNER EXCEPT ON ORDER OR WITH PRIOR WRITTEN AUTHORIZATION OF ATI.

DRAWN BY: Dan Norton 12/12/16		TITLE	
CHECKED BY: KRZ 12/13/16		GL2P Compliant Utility Coupler, BSPP	
SCALE	SIZE	DRAWING NUMBER	REVISION
1:2	B	9630-20-GL2P-E	03
PROJECT # 161118-4 SHEET 1 OF 3			

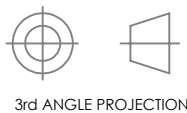


# GL2P-E Compliant Utility Coupler Master Assembly



NOTES: UNLESS OTHERWISE SPECIFIED.

DO NOT SCALE DRAWING. ALL DIMENSIONS ARE IN MILLIMETERS.

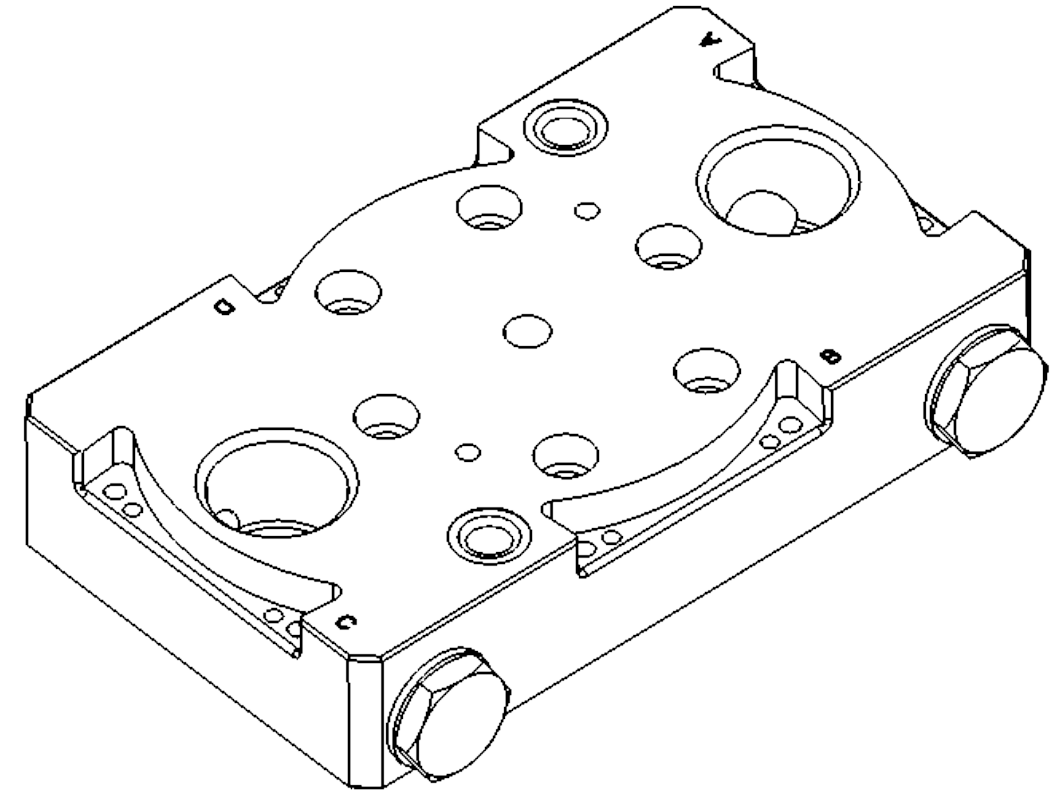
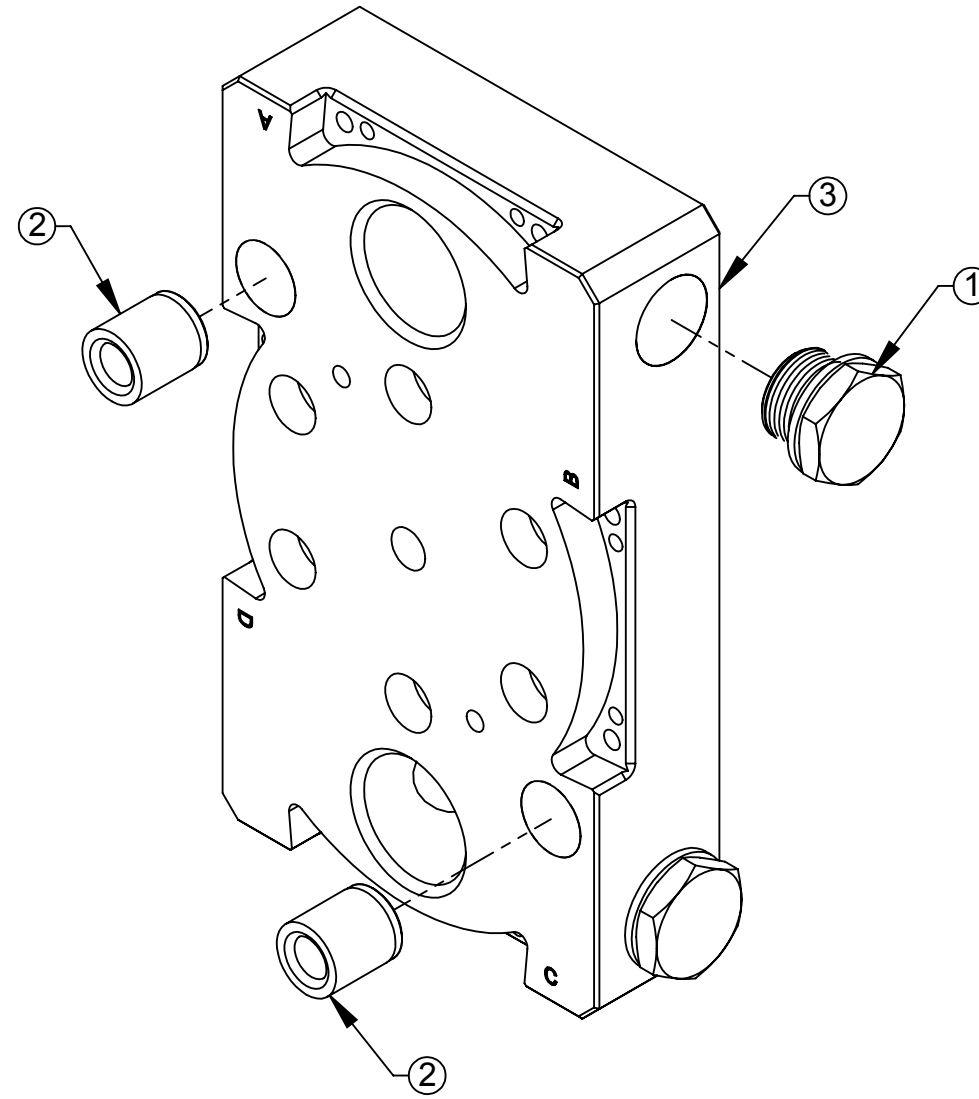


1031 Goodworth Drive, Apex, NC 27539, USA  
 Tel: +1.919.772.0115 Email: info@ati-ia.com  
 Fax: +1.919.772.8259 www.ati-ia.com  
 ISO 9001 Registered Company

PROPERTY OF ATI INDUSTRIAL AUTOMATION, INC. NOT TO BE REPRODUCED IN ANY MANNER EXCEPT ON ORDER OR WITH PRIOR WRITTEN AUTHORIZATION OF ATI.

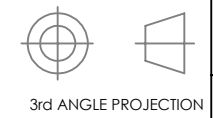
DRAWN BY: Dan Norton 12/12/16		TITLE		
CHECKED BY: KRZ 12/13/16		GL2P Compliant Utility Coupler, BSPP		
PROJECT # 161118-4	SHEET 2 OF 3	SCALE 1:2	SIZE B	DRAWING NUMBER 9630-20-GL2P-E
				REVISION 03

# GL2P-E Utility Coupler Tool Assembly



NOTES: UNLESS OTHERWISE SPECIFIED.

DO NOT SCALE DRAWING. ALL DIMENSIONS ARE IN MILLIMETERS.



1031 Goodworth Drive, Apex, NC 27539, USA  
 Tel: +1.919.772.0115 Email: info@ati-ia.com  
 Fax: +1.919.772.8259 www.ati-ia.com  
 ISO 9001 Registered Company

PROPERTY OF ATI INDUSTRIAL AUTOMATION, INC. NOT TO BE REPRODUCED IN ANY MANNER EXCEPT ON ORDER OR WITH PRIOR WRITTEN AUTHORIZATION OF ATI.

DRAWN BY: Dan Norton 12/12/16		TITLE		
CHECKED BY: KRZ 12/13/16		GL2P Compliant Utility Coupler, BSPP		
PROJECT #	161118-4	SHEET	3	OF 3
SCALE	1:2	SIZE	B	DRAWING NUMBER
				9630-20-GL2P-E
				REVISION
				03