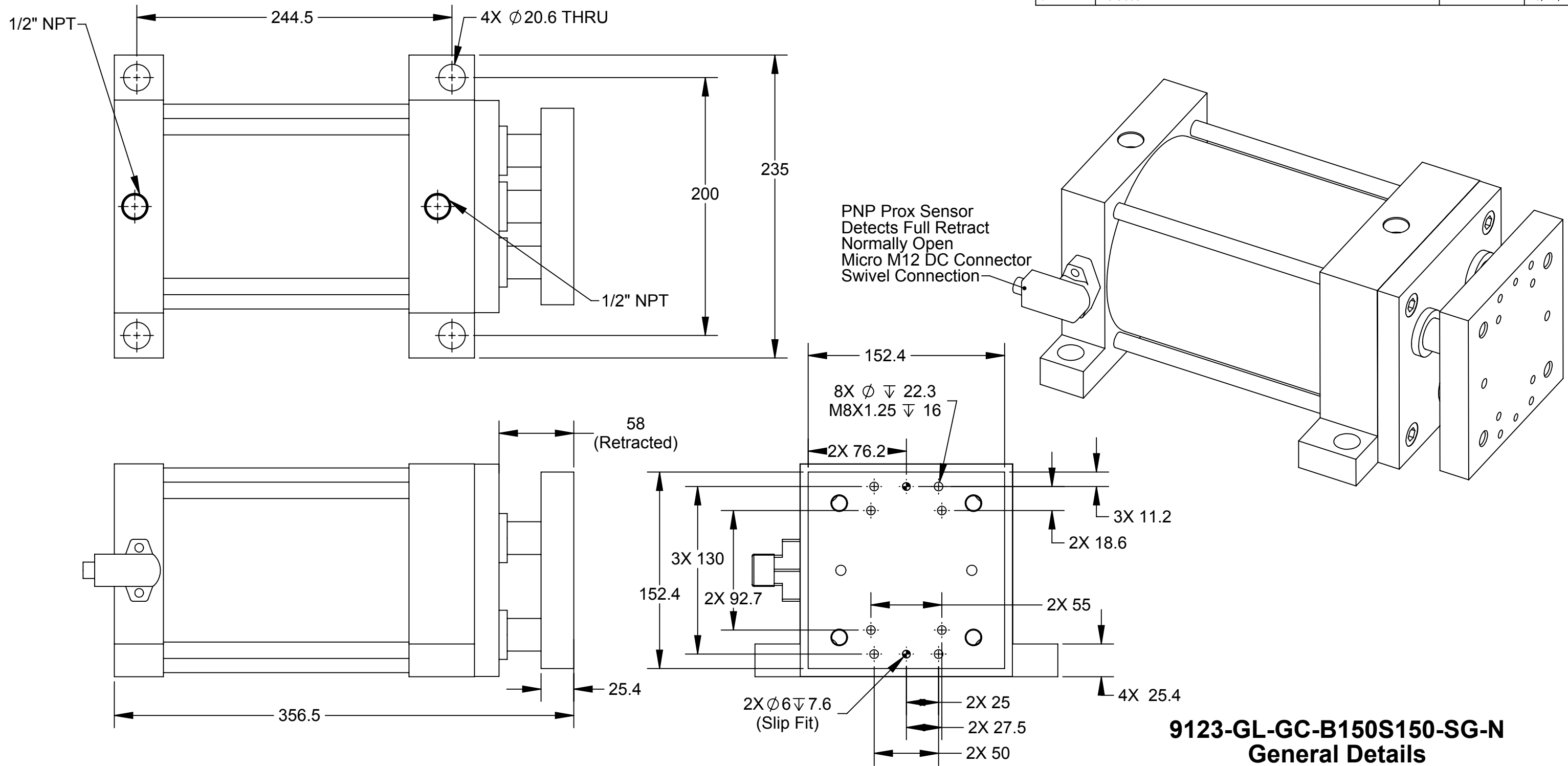


Rev.	Description	Initiator	Date
01	Release	DAN	10/17/2013



**9123-GL-GC-B150S150-SG-N
General Details**

- Notes:
1. Drive cylinder unit is a triple rod cylinder 150mm max stroke, and features a prox sensor to detect fully retracted position.
 2. Drive cylinder exerts approximately 2,200 lbs of coupling force at 80 psi. Care is needed to accommodate these coupling forces in the design of mating customer equipment.
 3. For proper operation, cylinder pressure must be maintained in order to resist the opposing forces in the corresponding utility coupler.
 4. Maximum cylinder stroke is 150mm. It is recommended to space master and tool halves at maximum 125mm, so there is some cylinder stroke left over.

NOTES: UNLESS OTHERWISE SPECIFIED.

DO NOT SCALE DRAWING. ALL DIMENSIONS ARE IN MILLIMETERS.



3rd ANGLE PROJECTION



1031 Goodworth Drive, Apex, NC 27539, USA
 Tel: +1.919.772.0115 Email: info@ati-ia.com
 Fax: +1.919.772.8259 www.ati-ia.com
 ISO 9001 Registered Company

PROPERTY OF ATI INDUSTRIAL AUTOMATION, INC. NOT TO BE REPRODUCED IN ANY MANNER EXCEPT ON ORDER OR WITH PRIOR WRITTEN AUTHORIZATION OF ATI.

DRAWN BY: Dan Norton 10/17/13		TITLE	
CHECKED BY: KRZ 10/17/13		GL Drive Cylinder Drawing 150mm Bore 150mm Stroke	
PROJECT # -	SHEET 1 OF 1	SCALE	REVISION
		1:3	01
SIZE	DRAWING NUMBER		
B	9630-20-GL-GC-B150S150-SG-N		