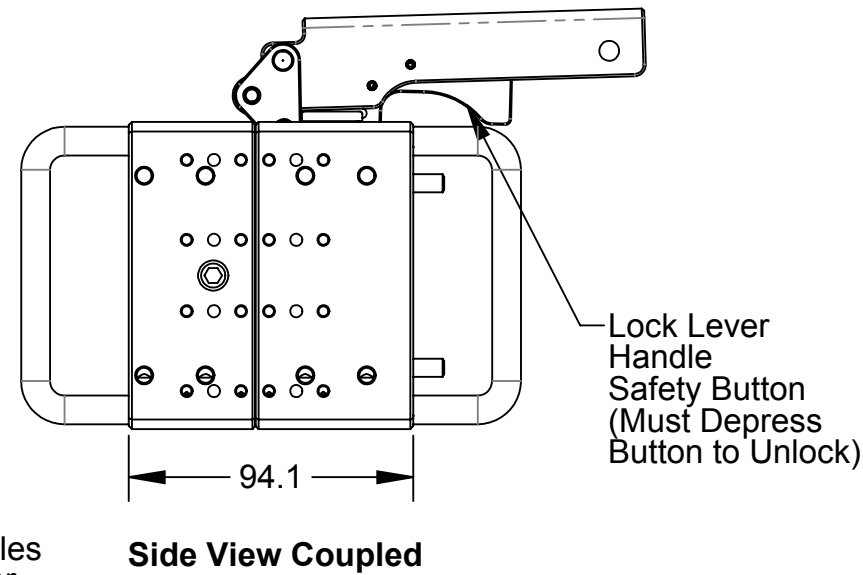
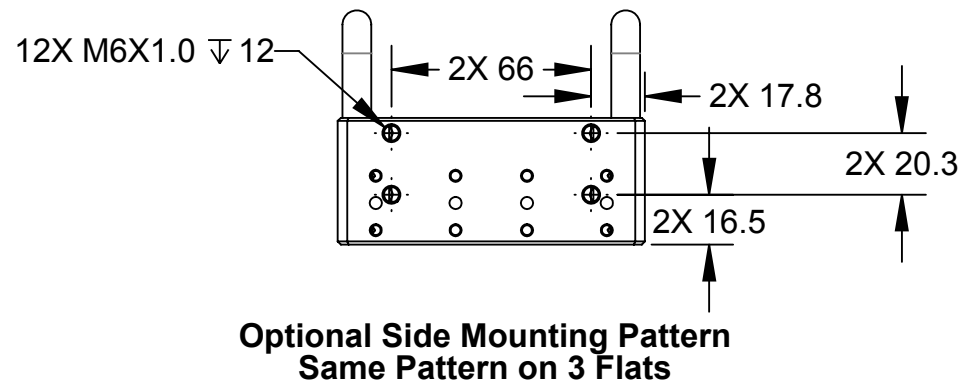
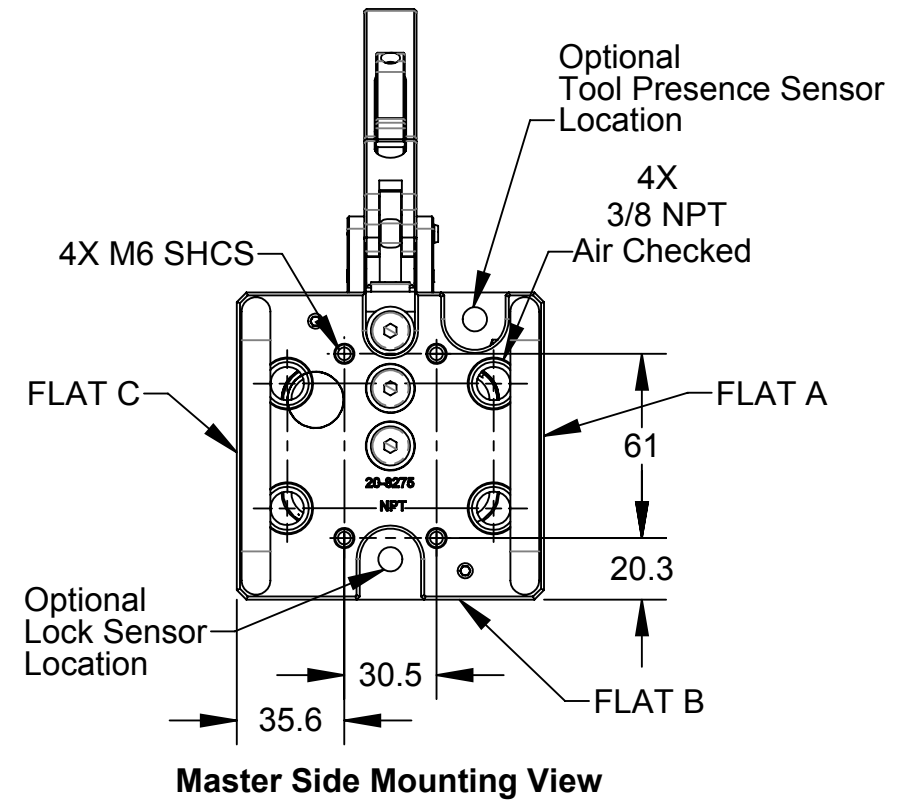
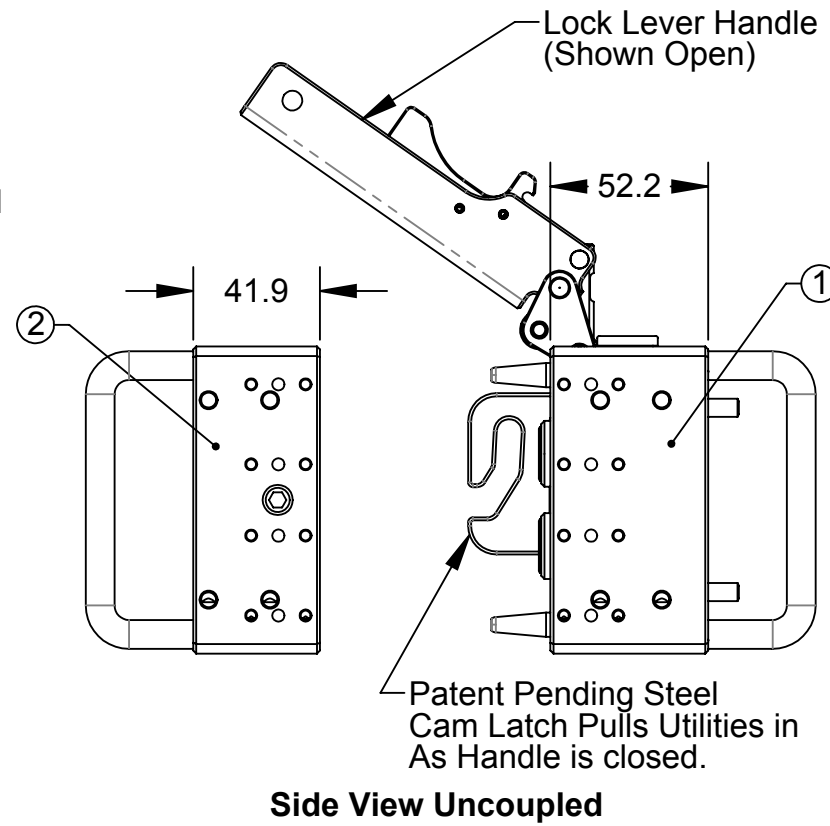
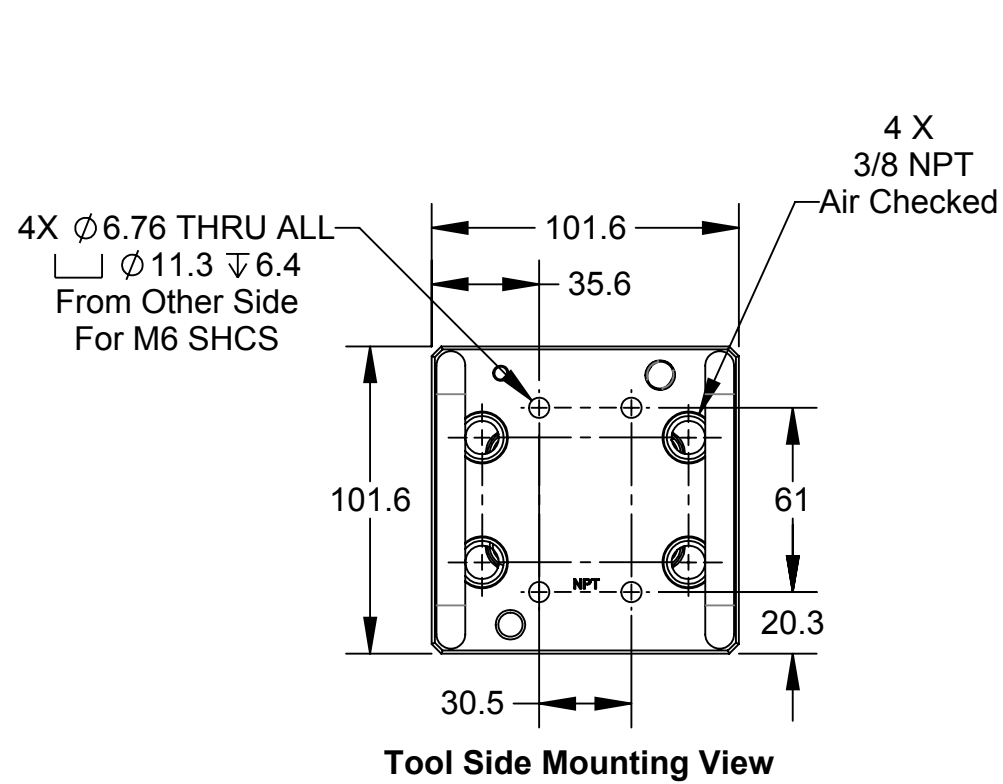
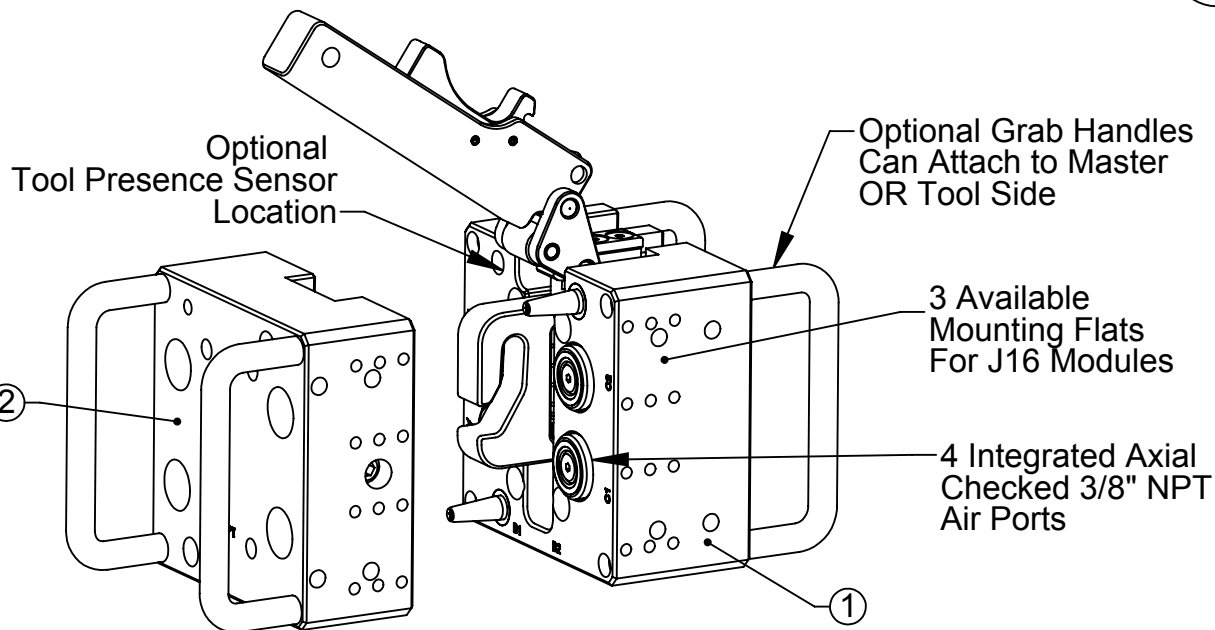


Rev.	Description	Initiator	Date
03	ECO 15719; Handle 9005-20-2016 is now 9005-20-8478	LJH	6/20/17



Notes:

1. Unit Features 3 module mounting flats.
2. Unit Features 4 integrated 3/8" NPT Checked ports for air, axial connections.
3. Unit Features optional lock and tool presence sensors.
4. Unit Features optional grab handles and optional mounting bracket.
5. Unit Features over-center handle that actuates linear cam latch mechanism.



ITEM NO.	QTY.	PART NUMBER	DESCRIPTION
1	1	9123-GH1M-00-00-00-N	GH1 Manual UC Master Assembly, NPT
2	1	9123-GH1T-00-00-00-N	GH1 Tool Base Assembly, NPT

NOTES: UNLESS OTHERWISE SPECIFIED.

DO NOT SCALE DRAWING.
 ALL DIMENSIONS ARE IN
 MILLIMETERS.



3rd ANGLE PROJECTION



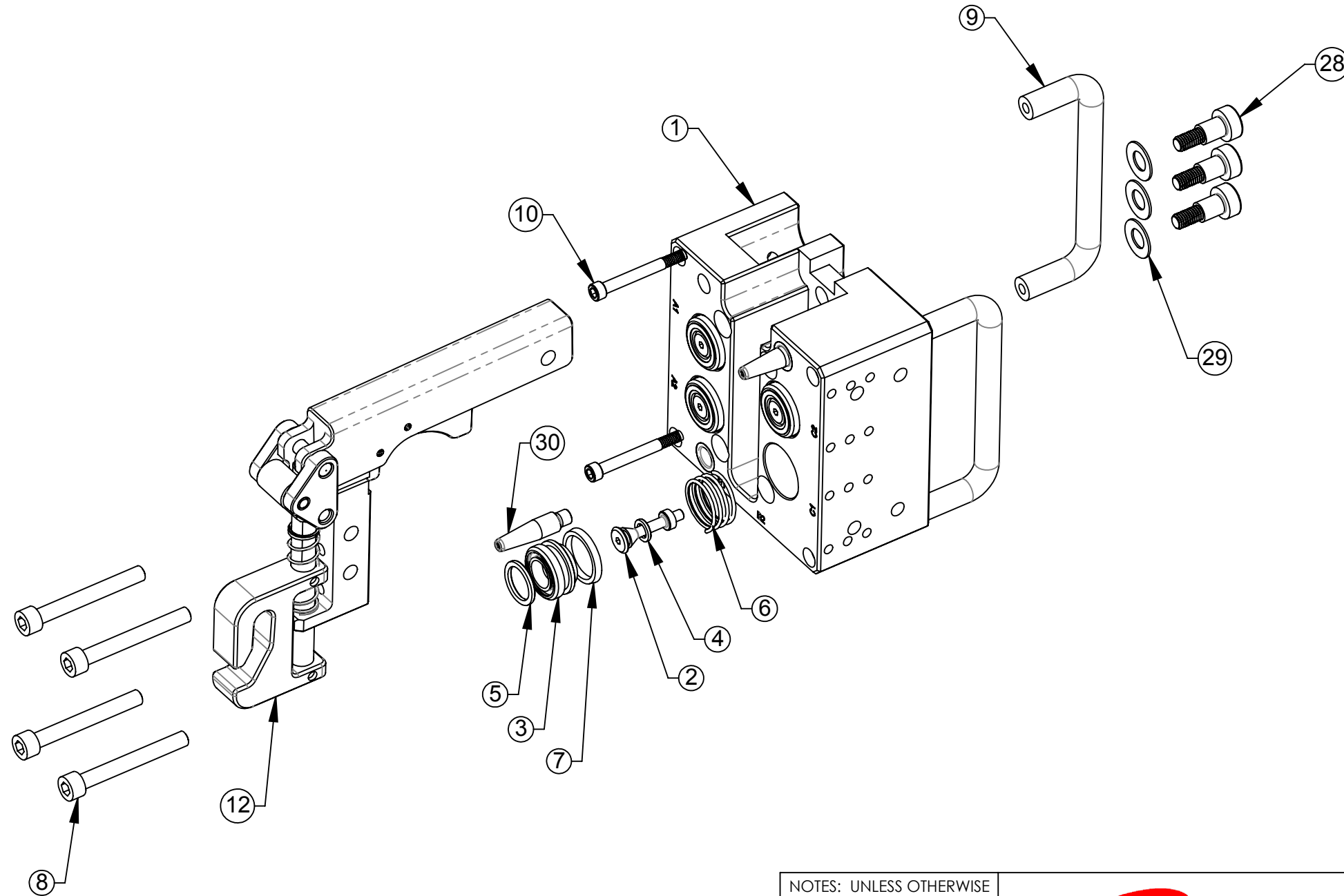
1031 Goodworth Drive, Apex, NC 27539, USA
 Tel: +1.919.772.0115 Email: info@ati-ia.com
 Fax: +1.919.772.8259 www.ati-ia.com
 ISO 9001 Registered Company

PROPERTY OF ATI INDUSTRIAL AUTOMATION, INC. NOT TO BE REPRODUCED IN ANY MANNER EXCEPT ON ORDER OR WITH PRIOR WRITTEN AUTHORIZATION OF ATI.

DRAWN BY: Dan Norton 1/6/12		TITLE	
CHECKED BY: KRZ 9/23/13		GH1 Manual Utility Coupler, NPT Ports	
SCALE	SIZE	DRAWING NUMBER	REVISION
1:2.5	B	9630-20-GH1-N	03
PROJECT # 110803-1 SHEET 1 OF 3			

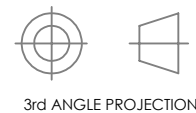
Rev.	Description	Initiator	Date
-	See Sheet1	-	-

GH1-NPT MASTER EXPLODED VIEW



NOTES: UNLESS OTHERWISE SPECIFIED.

DO NOT SCALE DRAWING. ALL DIMENSIONS ARE IN MILLIMETERS.



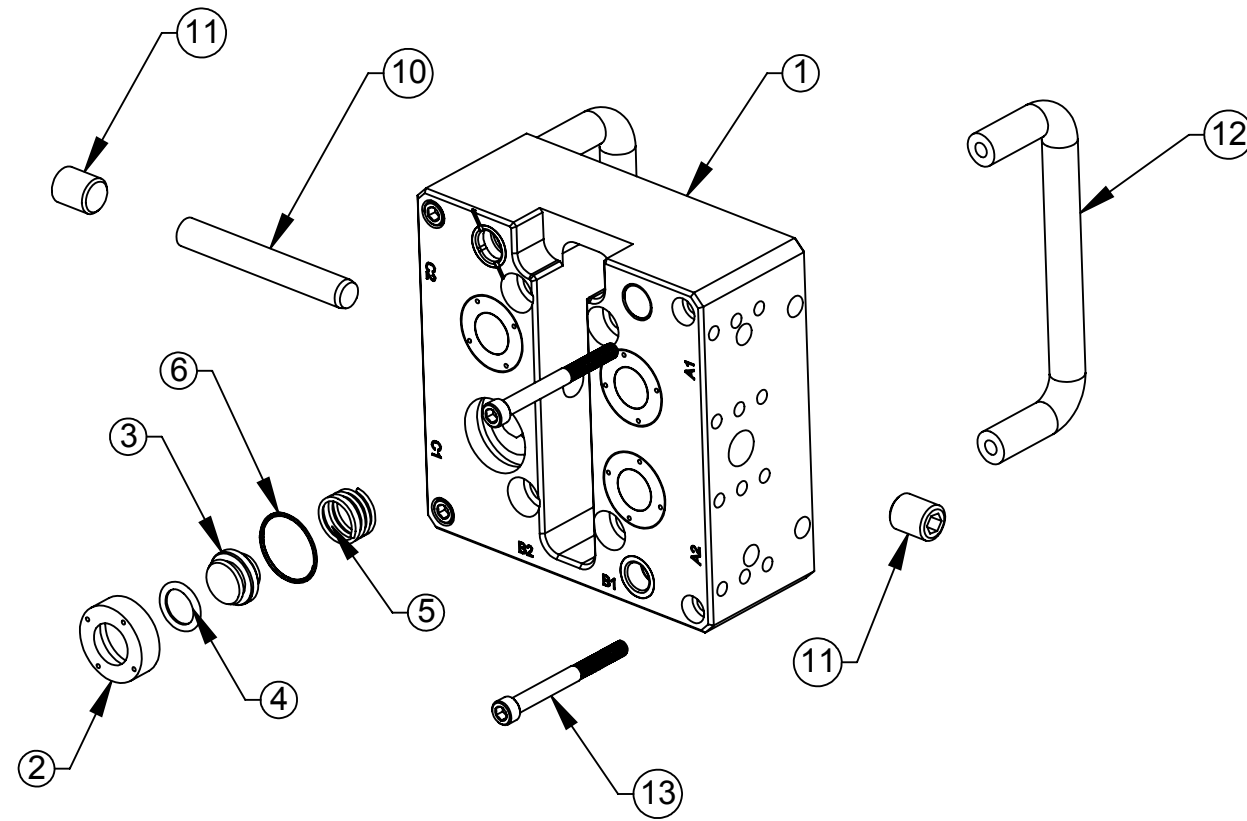
1031 Goodworth Drive, Apex, NC 27539, USA
 Tel: +1.919.772.0115 Email: info@ati-ia.com
 Fax: +1.919.772.8259 www.ati-ia.com
 ISO 9001 Registered Company

PROPERTY OF ATI INDUSTRIAL AUTOMATION, INC. NOT TO BE REPRODUCED IN ANY MANNER EXCEPT ON ORDER OR WITH PRIOR WRITTEN AUTHORIZATION OF ATI.

DRAWN BY: Dan Norton 1/6/12		TITLE	
CHECKED BY: KRZ 9/23/13		GH1 Manual Utility Coupler, NPT Ports	
PROJECT # 110803-1	SHEET 2 OF 3	SCALE 1:2	SIZE B
DRAWING NUMBER 9630-20-GH1-N		REVISION 03	

Rev.	Description	Initiator	Date
-	See Sheet1	-	-

GH1-NPT TOOL EXPLODED VIEW



NOTES: UNLESS OTHERWISE SPECIFIED.

DO NOT SCALE DRAWING. ALL DIMENSIONS ARE IN MILLIMETERS.



3rd ANGLE PROJECTION



1031 Goodworth Drive, Apex, NC 27539, USA
 Tel: +1.919.772.0115 Email: info@ati-ia.com
 Fax: +1.919.772.8259 www.ati-ia.com
 ISO 9001 Registered Company

PROPERTY OF ATI INDUSTRIAL AUTOMATION, INC. NOT TO BE REPRODUCED IN ANY MANNER EXCEPT ON ORDER OR WITH PRIOR WRITTEN AUTHORIZATION OF ATI.

DRAWN BY: Dan Norton 1/6/12		TITLE	
CHECKED BY: KRZ 9/23/13		GH1 Manual Utility Coupler, NPT Ports	
PROJECT # 110803-1	SHEET 3 OF 3	SCALE 1:2	REVISION 03
SIZE B	DRAWING NUMBER 9630-20-GH1-N		