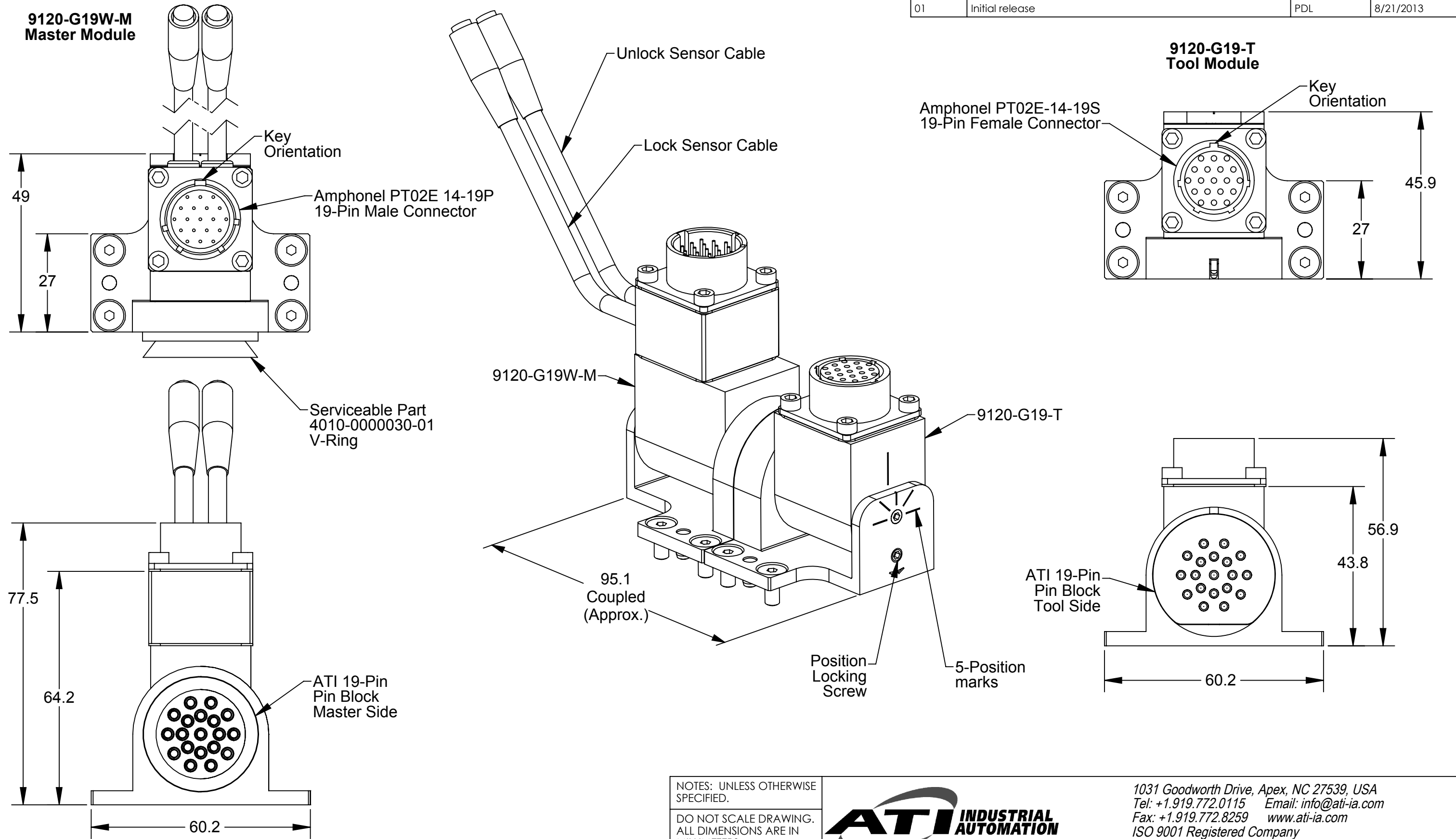
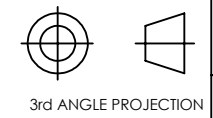


Rev.	Description	Initiator	Date
01	Initial release	PDL	8/21/2013



- Notes:
1. Module Electrical rating: 3 AMPS / 250 VAC
  2. Customer approval of electrical schematic is required.
  3. Customer is to approve connector selection and orientation.
  4. See sheet 3 for module wiring schematic.
  5. See Sheet 2 for Customer Interface information.

NOTES: UNLESS OTHERWISE SPECIFIED.  
DO NOT SCALE DRAWING. ALL DIMENSIONS ARE IN MILLIMETERS.



1031 Goodworth Drive, Apex, NC 27539, USA  
Tel: +1.919.772.0115 Email: info@ati-ia.com  
Fax: +1.919.772.8259 www.ati-ia.com  
ISO 9001 Registered Company

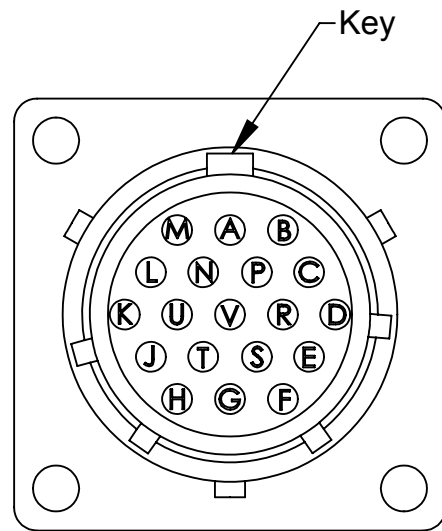
PROPERTY OF ATI INDUSTRIAL AUTOMATION, INC. NOT TO BE REPRODUCED IN ANY MANNER EXCEPT ON ORDER OR WITH PRIOR WRITTEN AUTHORIZATION OF ATI.

DRAWN BY: P.Luczka, 8/21/13		TITLE	
CHECKED BY: D.Wagner, 8/21/13 B.Henderson, 8/23/13		G19W / G19 Electrical Master and Tool Module	
PROJECT # -	SHEET 1 OF 3	SCALE 1:1	SIZE B
DRAWING NUMBER 9630-20-G19WM G19T		REVISION 01	

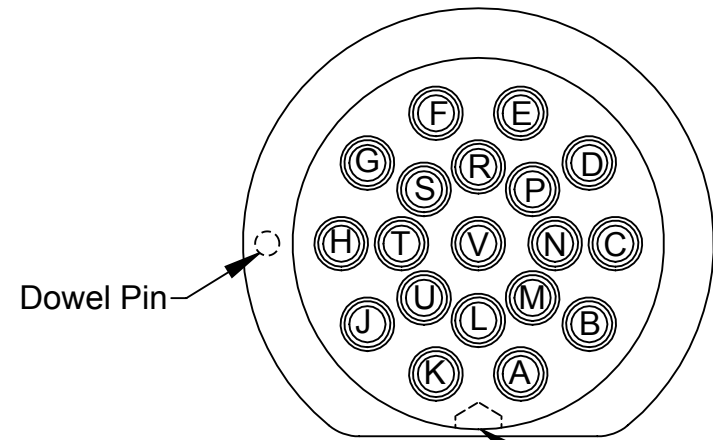
Rev.	Description	Initiator	Date
-	See Sheet1	-	-

**Sensor Cable**

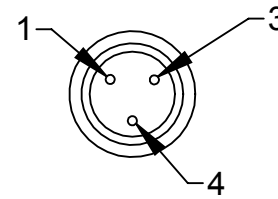
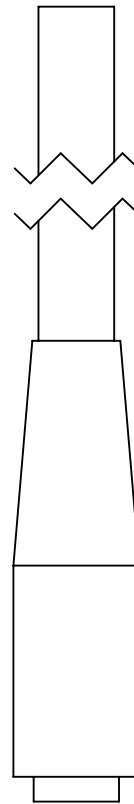
**Master Side**



Amphenol PT02E 14-19P  
19-Pin Male Connector  
Face View

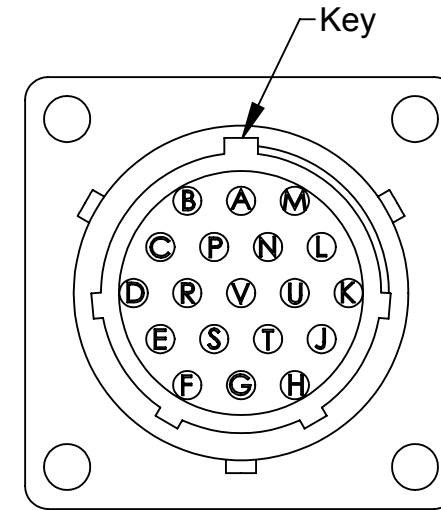


ATI 19-Pin  
Master Pin Block  
Face View

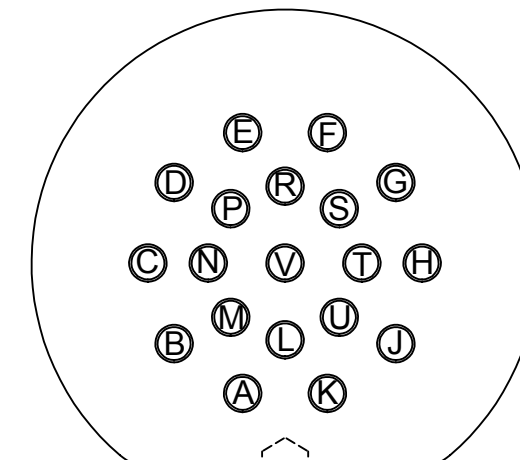


Turck 3-Pin  
M8 Sensor Cable  
Face View

**Tool Side**



Amphenol PT02E-14-19S  
19-Pin Female Connector



ATI 19-Pin  
Tool Pin Block  
Face View

NOTES: UNLESS OTHERWISE SPECIFIED.

DO NOT SCALE DRAWING. ALL DIMENSIONS ARE IN MILLIMETERS.



3rd ANGLE PROJECTION



1031 Goodworth Drive, Apex, NC 27539, USA  
Tel: +1.919.772.0115 Email: info@ati-ia.com  
Fax: +1.919.772.8259 www.ati-ia.com  
ISO 9001 Registered Company

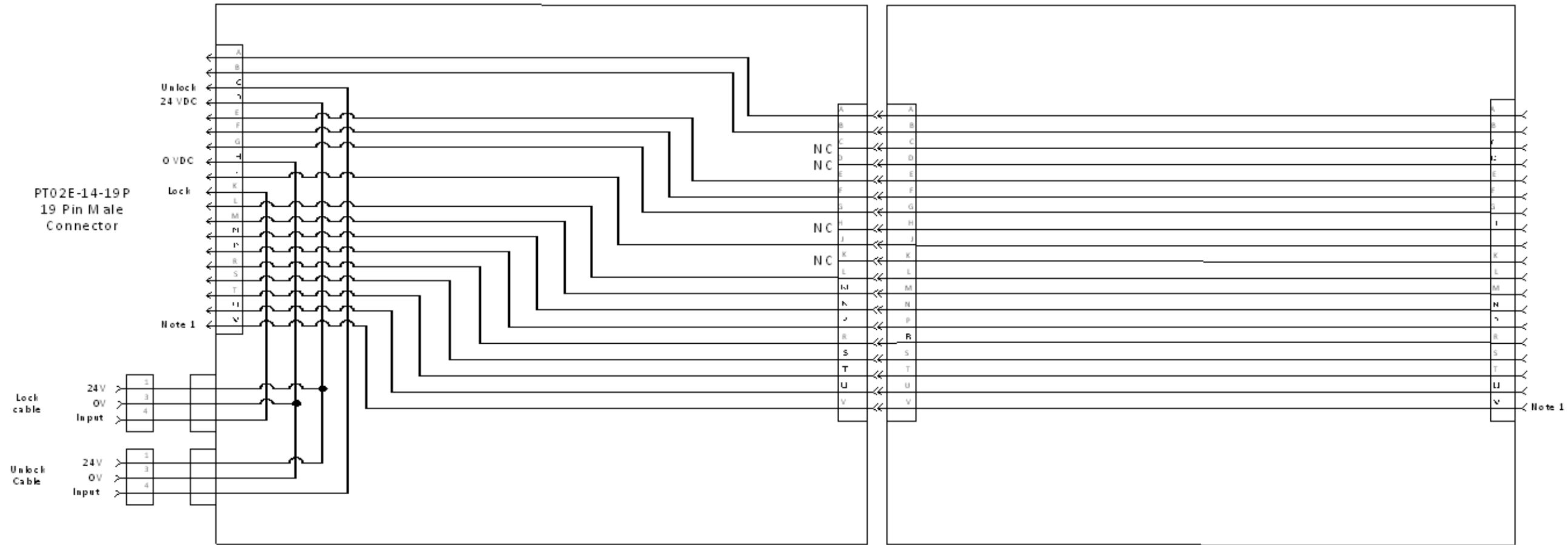
PROPERTY OF ATI INDUSTRIAL AUTOMATION, INC. NOT TO BE REPRODUCED IN ANY MANNER EXCEPT ON ORDER OR WITH PRIOR WRITTEN AUTHORIZATION OF ATI.

DRAWN BY: P.Luczka, 8/21/13		TITLE	
CHECKED BY: D.Wagner, 8/21/13 B.Henderson, 8/23/13		G19W / G19 Electrical Master and Tool Module	
PROJECT # -	SHEET 2 OF 3	SCALE	SIZE
		2:1	B
		DRAWING NUMBER	REVISION
		9630-20-G19WM G19T	01

Rev.	Description	Initiator	Date
-	See Sheet1	-	-

9120-G19W -M

9120-G19-T

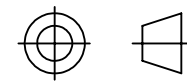


Notes:

1. Pin "V" on the ATI pin block is First-To-Mate and Last-To-Break contact and is recommended as ground.
2. Reference Table 1 for ToolID Binary output.

NOTES: UNLESS OTHERWISE SPECIFIED.

DO NOT SCALE DRAWING. ALL DIMENSIONS ARE IN MILLIMETERS.



3rd ANGLE PROJECTION



1031 Goodworth Drive, Apex, NC 27539, USA  
 Tel: +1.919.772.0115 Email: info@ati-ia.com  
 Fax: +1.919.772.8259 www.ati-ia.com  
 ISO 9001 Registered Company

PROPERTY OF ATI INDUSTRIAL AUTOMATION, INC. NOT TO BE REPRODUCED IN ANY MANNER EXCEPT ON ORDER OR WITH PRIOR WRITTEN AUTHORIZATION OF ATI.

DRAWN BY: P.Luczka, 8/21/13		TITLE	
CHECKED BY: D.Wagner, 8/21/13 B.Henderson, 8/23/13		G19W / G19 Electrical Master and Tool Module	
PROJECT # -	SHEET 3 OF 3	SCALE	REVISION
		1:1	01
SIZE	DRAWING NUMBER		
B	9630-20-G19WM G19T		