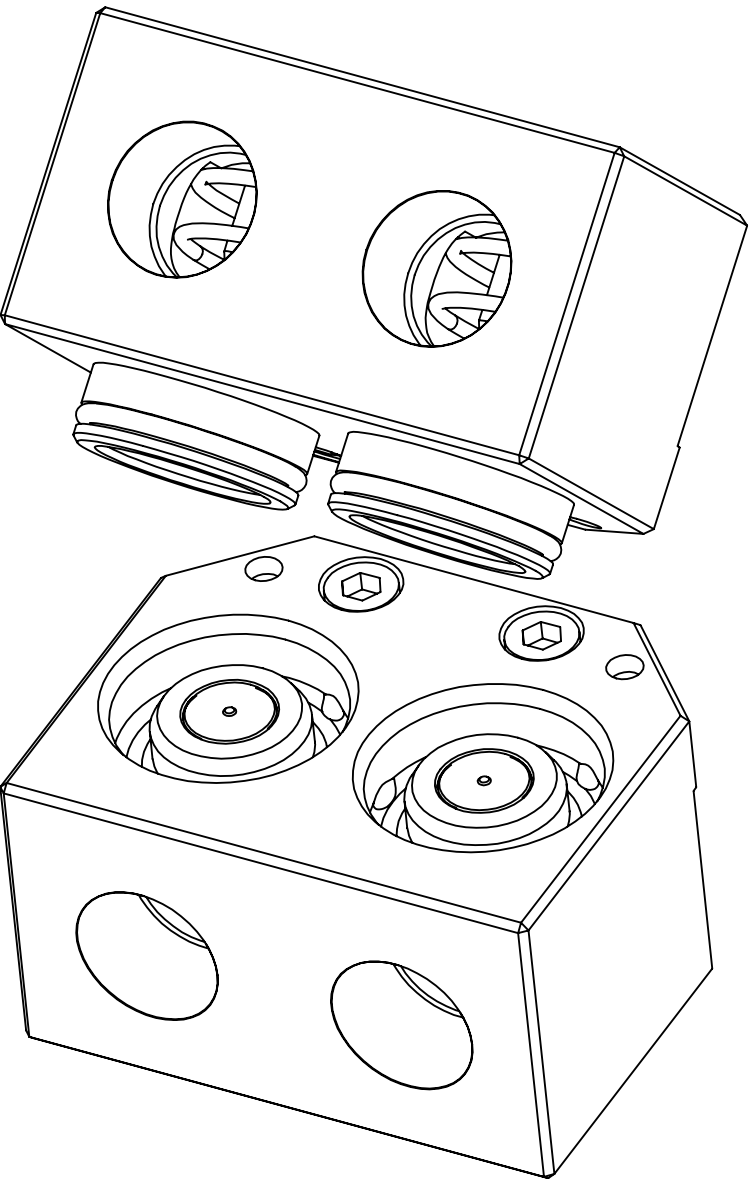
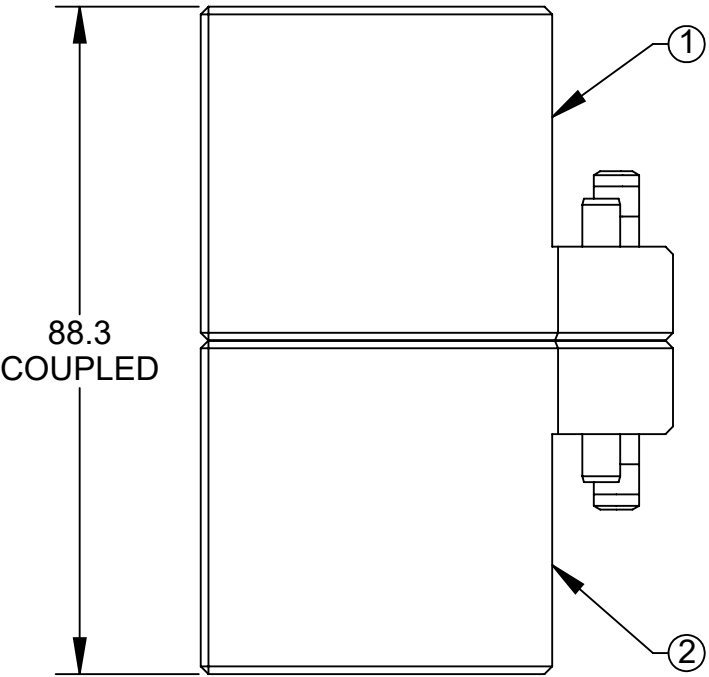
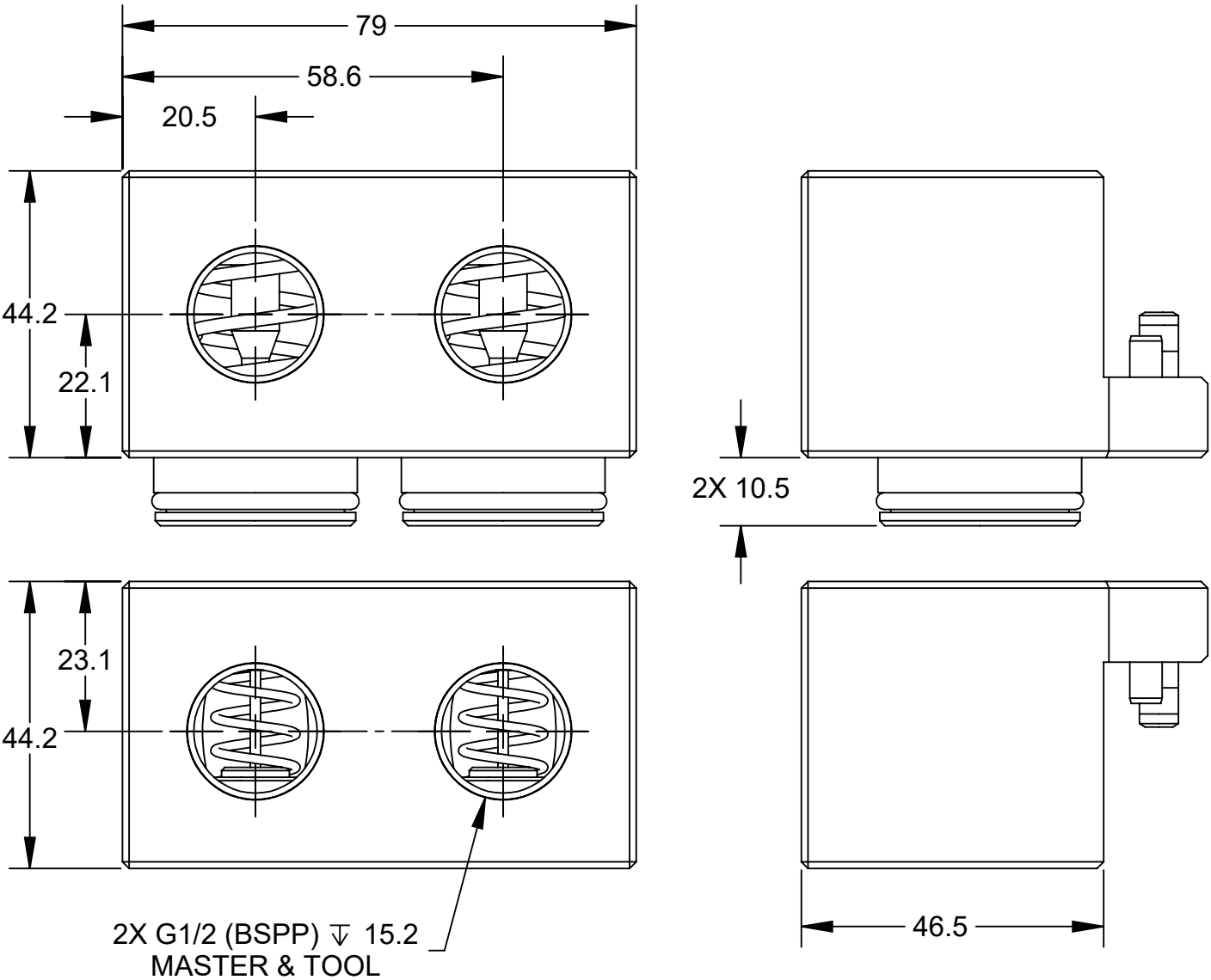




REV.	DESCRIPTION	INITIATOR	DATE
01	INITIAL RELEASE (EDIT: ON SHT2 "LOCTITE 7649-222" WAS "PRE", 9/29/21, BPF)	BPF	9/24/2021

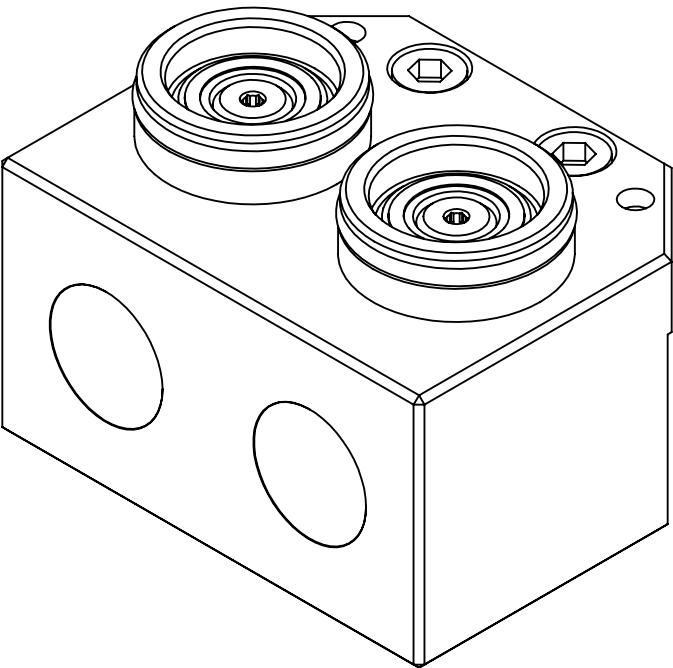
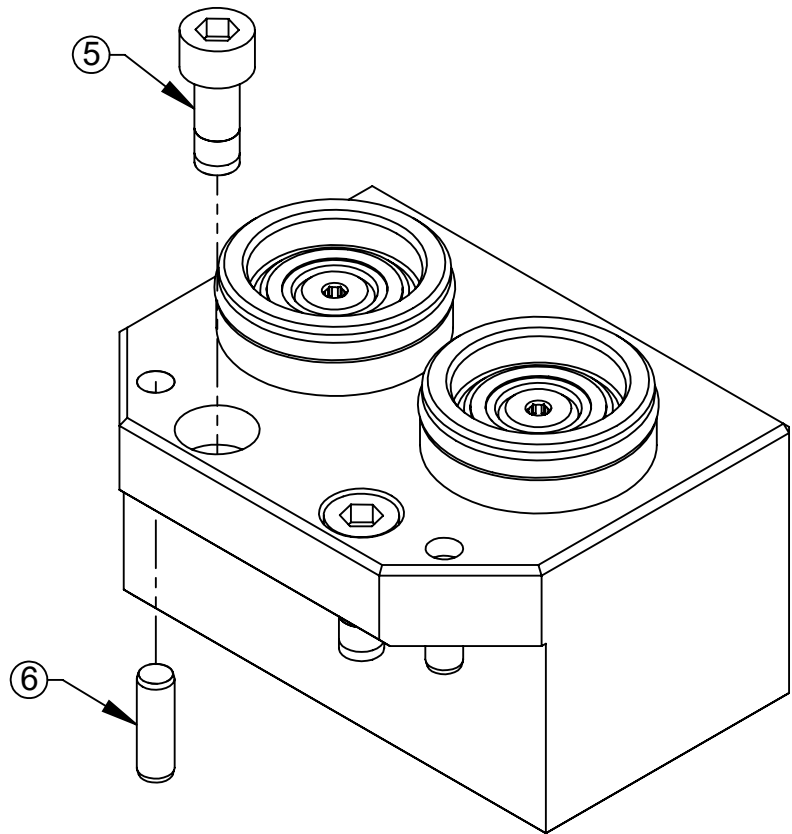
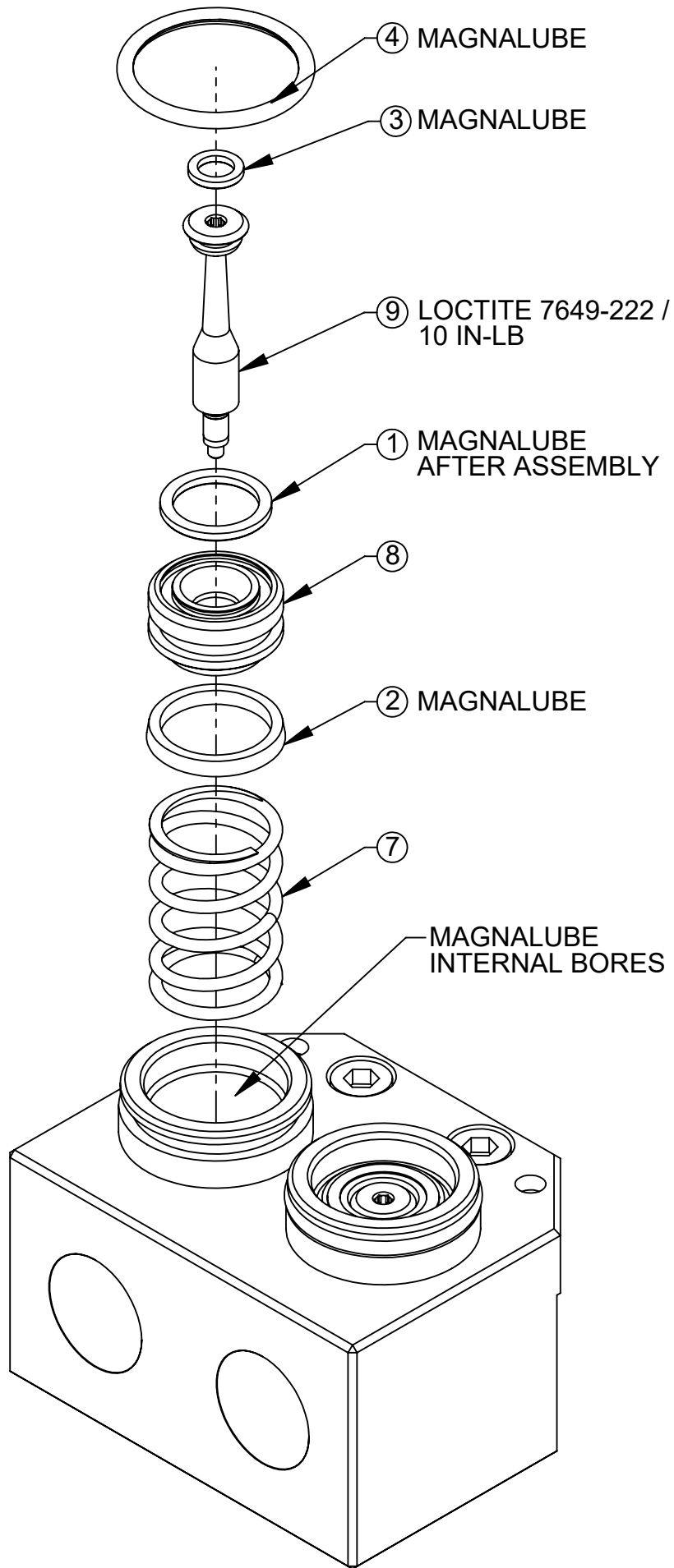


NOTES:  
MATERIALS OF CONSTRUCTION:  
1. MASTER HOUSING: STAINLESS STEEL  
2. TOOL HOUSING: STAINLESS STEEL  
3. VALVE COMPONENTS: STAINLESS STEEL, PVC, NITRILE

OPERATIONS:  
4. FOR BEST RESULTS ENSURE FLUIDS ARE NEAR NEUTRAL pH, MINIMIZE FLUID PARTICULATE SIZE AND KEEP FLUID MODULE MATING SURFACES FREE AND CLEAR OF ANY DEBRIS.  
5. CHECKED PORTS CAN PRODUCE SIGNIFICANT FORCES WHEN UNDER HIGH SUPPLY PRESSURES. SEE PRODUCT MANUAL REGARDING PROPER OPERATING PROCEDURE.  
6. CHECKED PORTS DO NOT SUPPORT VACUUM CONDITIONS.

ITEM NO.	QTY	PART NUMBER	DESCRIPTION		
1	1	9128-FY31-M	STAINLESS STEEL F/A MODULE WITH (2) G1/2 (BSPP) SELF-SEALING PORTS, 3/8 VALVE COMPONENTS, NIPPLE PORT WITH RADIAL SEAL, MASTER SIDE		
2	1	9128-FY31-T	STAINLESS STEEL F/A MODULE WITH (2) G1/2 (BSPP) SELF-SEALING PORTS, 3/8 VALVE COMPONENTS, NIPPLE PORT WITH RADIAL SEAL, TOOL SIDE		
NOTES: UNLESS OTHERWISE SPECIFIED.		<div><div>1031 Goodworth Drive, Apex, NC 27539, USA Tel: +1.919.772.0115    www.ati-ia.com Fax: +1.919.772.8259    ISO 9001 Registered Company</div><div>PROPERTY OF ATI INDUSTRIAL AUTOMATION, INC. NOT TO BE REPRODUCED IN ANY MANNER EXCEPT ON ORDER OR WITH PRIOR WRITTEN AUTHORIZATION OF ATI.</div></div>			
DO NOT SCALE DRAWING. ALL DIMENSIONS ARE IN MILLIMETERS.					
<div> 3rd ANGLE PROJECTION</div>					
DRAWN BY: B. FitzPatrick 8/17/21		TITLE Stainless Steel F/A Module with (2) G1/2 (BSPP) Self-Sealing Ports, 3/8 Valve Components, Nipple Port with Radial Seal			
CHECKED BY: D. Faust, 9/27/21					
PROJECT # 180829-2    SHEET 1 OF 3		SCALE 1:1	SIZE B	DRAWING NUMBER 9630-20-FY31	REVISION 01

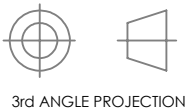
FY31-M SERVICEABLE PARTS



ITEM NO.	QTY	PART NUMBER	DESCRIPTION
1	2	3410-0001065-01	O-RING 14MM X 2MM BUNA
2	2	3410-0001068-01	MINI U-CUP SEAL 18mm ID X 22mm BUNA
3	2	3410-0001183-01	O-RING 6MM X 2MM BUNA D90
4	2	3410-0001477-01	O-RING, AS568-121, BUNA-N, D70
5	2	3500-1066016-21A	M6-1 X 16mm SHCS, SS, PRE-APPLIED
6	2	3540-0105016-21	5mm X 16mm DOWEL PIN SST
7	2	3610-1912501-21	COMPRESSION SPRING, .845" OD, 1.250 FREE LENGTH, 31.7 LB/IN RATE, STAINLESS STEEL
8	2	3700-20-2994	MASTER CHECK VALVE PISTON
9	2	3700-20-10503	VALVE STEM, 3/8 TALL VALVE, M4 THREAD

NOTES: UNLESS OTHERWISE SPECIFIED.

DO NOT SCALE DRAWING. ALL DIMENSIONS ARE IN MILLIMETERS.

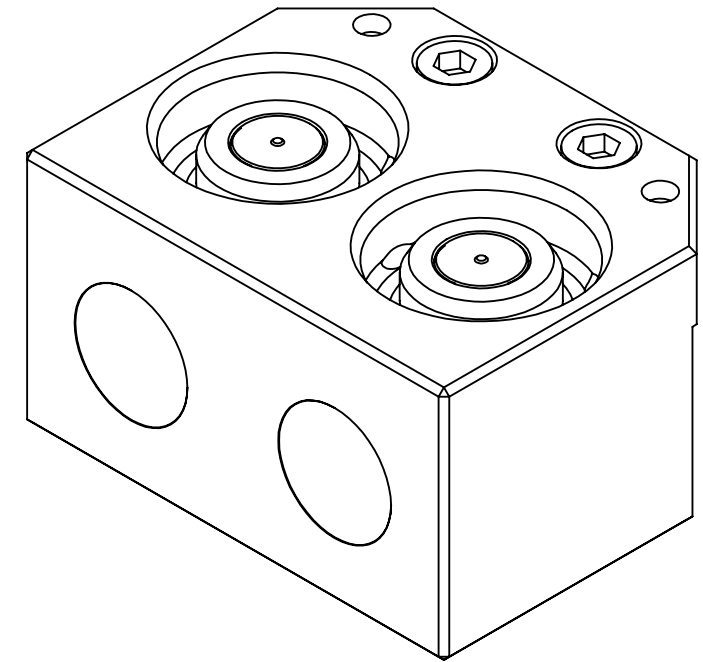
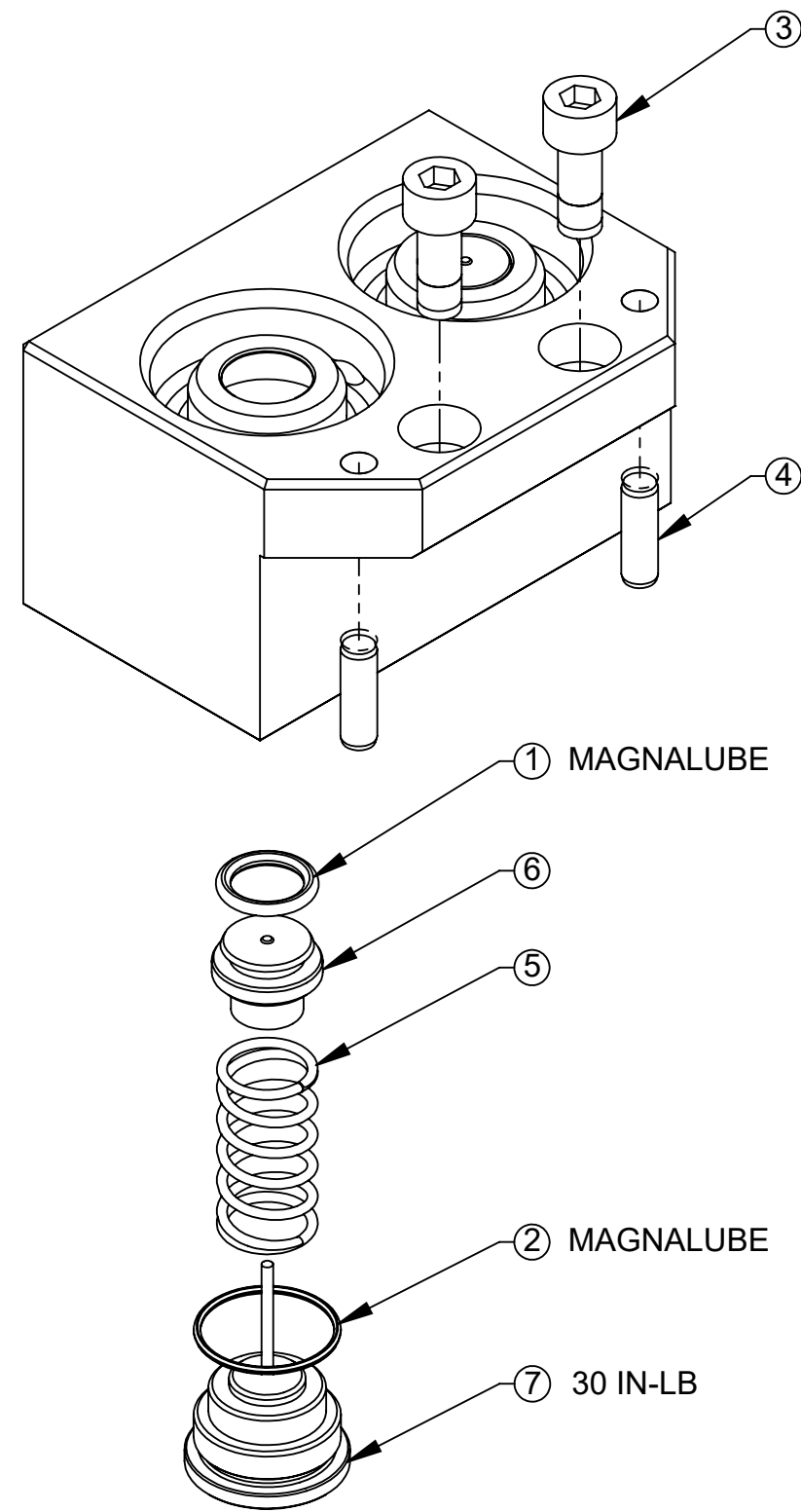


1031 Goodworth Drive, Apex, NC 27539, USA  
Tel: +1.919.772.0115 www.ati-ia.com  
Fax: +1.919.772.8259 ISO 9001 Registered Company

PROPERTY OF ATI INDUSTRIAL AUTOMATION, INC. NOT TO BE REPRODUCED IN ANY MANNER EXCEPT ON ORDER OR WITH PRIOR WRITTEN AUTHORIZATION OF ATI.

DRAWN BY: B. FitzPatrick 8/17/21		TITLE Stainless Steel F/A Module with (2) G1/2 (BSPP) Self-Sealing Ports, 3/8 Valve Components, Nipple Port with Radial Seal			
CHECKED BY: D. Faust, 9/27/21					
PROJECT # 180829-2	SHEET 2 OF 3	SCALE 1:1	SIZE B	DRAWING NUMBER 9630-20-FY31	REVISION 01


FY31-T SERVICEABLE PARTS




ITEM NO.	QTY	PART NUMBER	DESCRIPTION
1	2	3410-0001067-01	O-RING, 10mm X 2mm, BUNA N, DUR. 90
2	2	3410-0001284-01	O-RING, .669OD X .047 WALL, 70D, BUNA-N
3	2	3500-1066016-21A	M6-1 X 16mm SHCS, SS, PRE-APPLIED
4	2	3540-0105016-21	5mm X 16mm DOWEL PIN SST
5	2	3610-2712500-20	SPRING, FLUID/AIR MODULE, TOOL
6	2	3700-20-1457	TOOL FLUID/AIR CHECK VALVE PISTON
7	2	9005-20-1515	3/8" CHECK PORT LONG PLUG WITH DOWEL

NOTES: UNLESS OTHERWISE SPECIFIED.

DO NOT SCALE DRAWING. ALL DIMENSIONS ARE IN MILLIMETERS.



3rd ANGLE PROJECTION



1031 Goodworth Drive, Apex, NC 27539, USA  
Tel: +1.919.772.0115    [www.ati-ia.com](http://www.ati-ia.com)  
Fax: +1.919.772.8259    ISO 9001 Registered Company

PROPERTY OF ATI INDUSTRIAL AUTOMATION, INC. NOT TO BE REPRODUCED IN ANY MANNER EXCEPT ON ORDER OR WITH PRIOR WRITTEN AUTHORIZATION OF ATI.

DRAWN BY: B. FitzPatrick 8/17/21		TITLE Stainless Steel F/A Module with (2) G1/2 (BSPP) Self-Sealing Ports, 3/8 Valve Components, Nipple Port with Radial Seal			
CHECKED BY: D. Faust, 9/27/21					
PROJECT # 180829-2	SHEET 3 OF 3	SCALE 1:1	SIZE B	DRAWING NUMBER 9630-20-FY31	REVISION 01