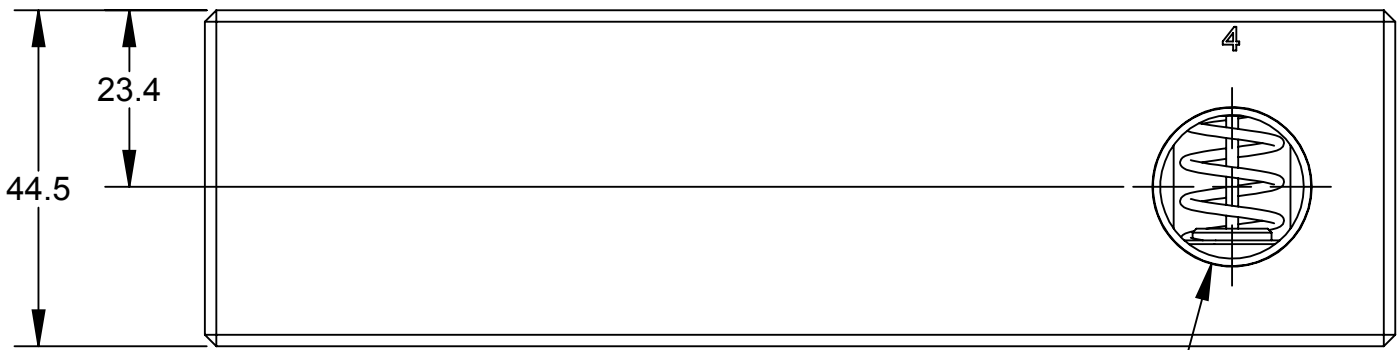
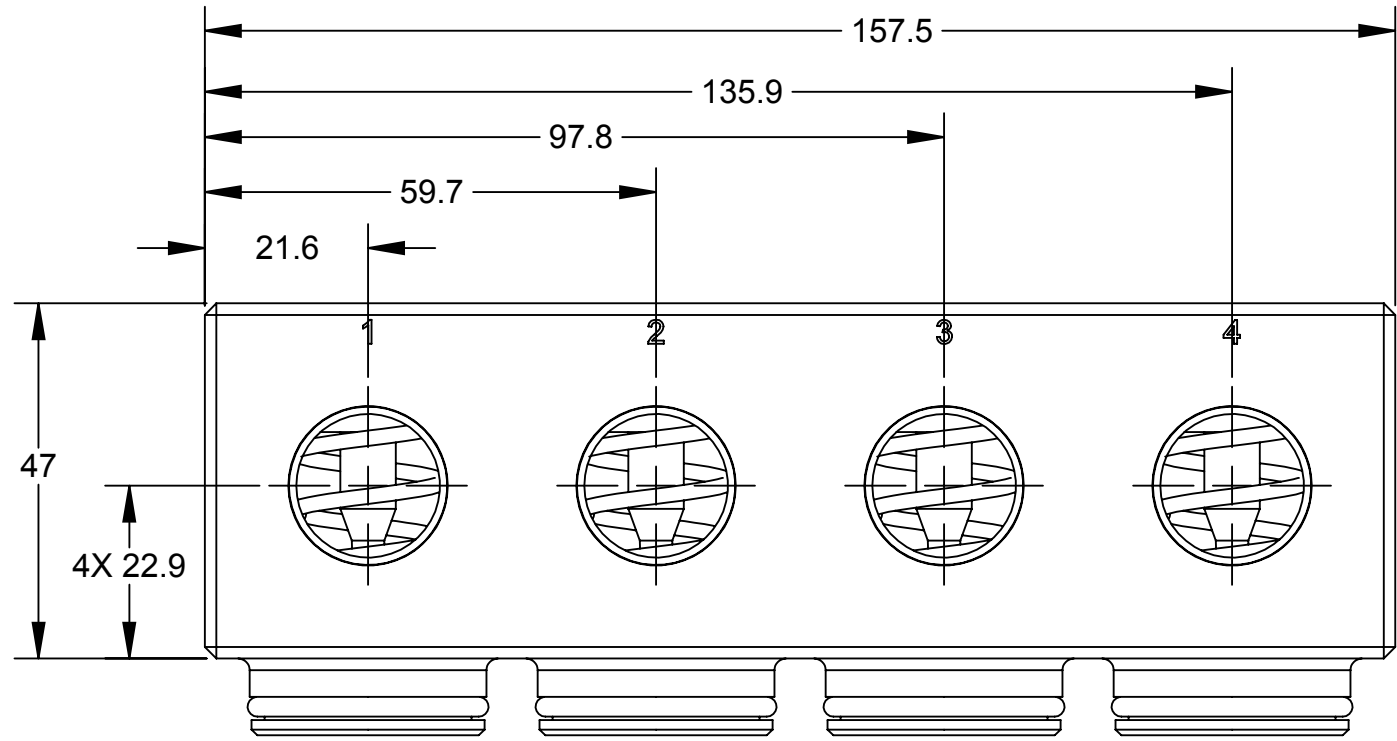
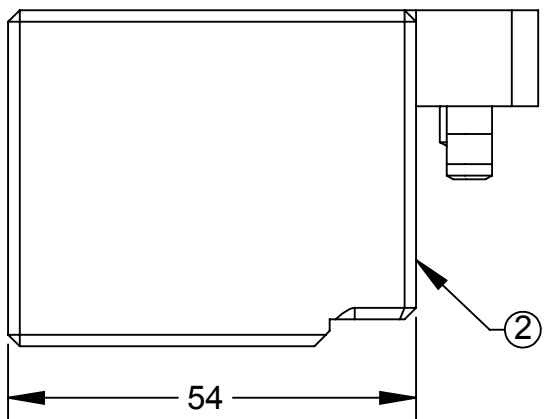
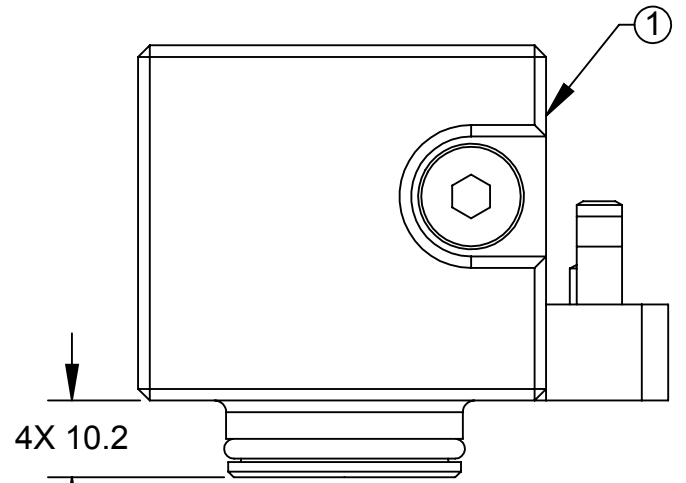


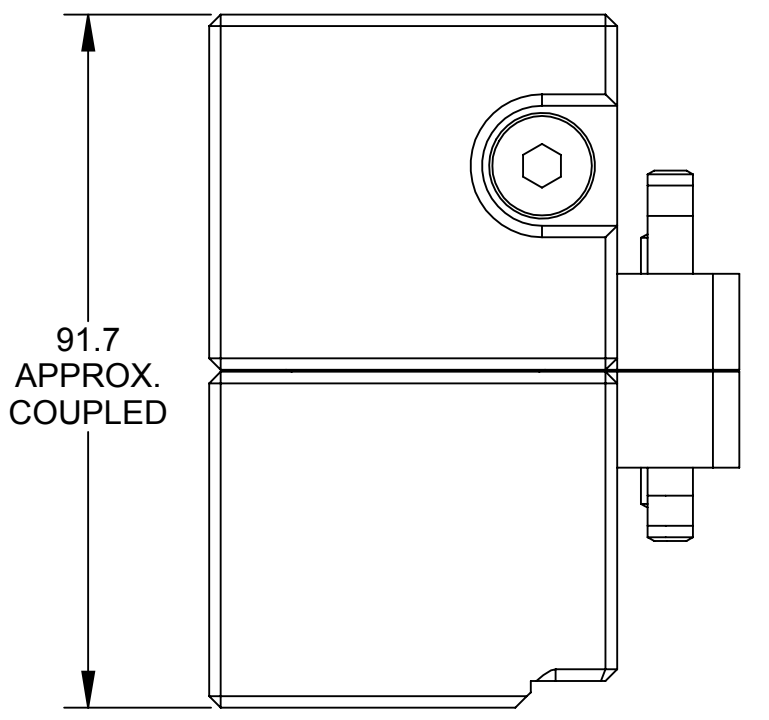
REV.	DESCRIPTION	INITIATOR	DATE
04	ECO 18245: Sheet 3: Replaced 3700-20-1460 with 3610-2712500-20.	TBC	9/5/2019



G1/2 (BSPP) ∇ 15.2  
MASTER & TOOL



SIDE VIEW UNCOUPLED



SIDE VIEW COUPLED

ITEM NO.	QTY	PART NUMBER	DESCRIPTION
1	1	9121-FH12-M	STAINLESS STEEL FLUID/AIR MODULE WITH (4) G1/2 (BSPP) SELF-SEALING PORTS, 3/8 VALVE COMPONENTS, NIPPLE PORT WITH RADIAL SEAL, MASTER SIDE
2	1	9121-AP5-T	AIR MODULE WITH (1) G1/2 (BSPP) SELF-SEALING PORTS, 3/8 VALVE COMPONENTS, C-BORE FOR NIPPLE PORT, TOOL SIDE

**NOTES:**  
**MATERIALS OF CONSTRUCTION:**  
 1. FH12 HOUSING: STAINLESS STEEL  
 2. AP5 HOUSING: ALUMINUM  
 3. VALVE COMPONENTS: STAINLESS STEEL, PVC, NITRILE  
 4. G1/8 PLUG: NICKEL PLATED BRASS

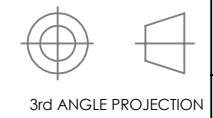
**OPERATIONS:**  
 5. FOR BEST RESULTS ENSURE FLUIDS ARE NEAR NEUTRAL pH, MINIMIZE FLUID PARTICULATE SIZE AND KEEP FLUID MODULE MATING SURFACES FREE AND CLEAR OF ANY DEBRIS.  
 6. CHECKED PORTS CAN PRODUCE SIGNIFICANT FORCES WHEN UNDER HIGH SUPPLY PRESSURES. SEE PRODUCT MANUAL REGARDING PROPER OPERATING PROCEDURE.

NOTES: UNLESS OTHERWISE SPECIFIED.  
 DO NOT SCALE DRAWING. ALL DIMENSIONS ARE IN MILLIMETERS.



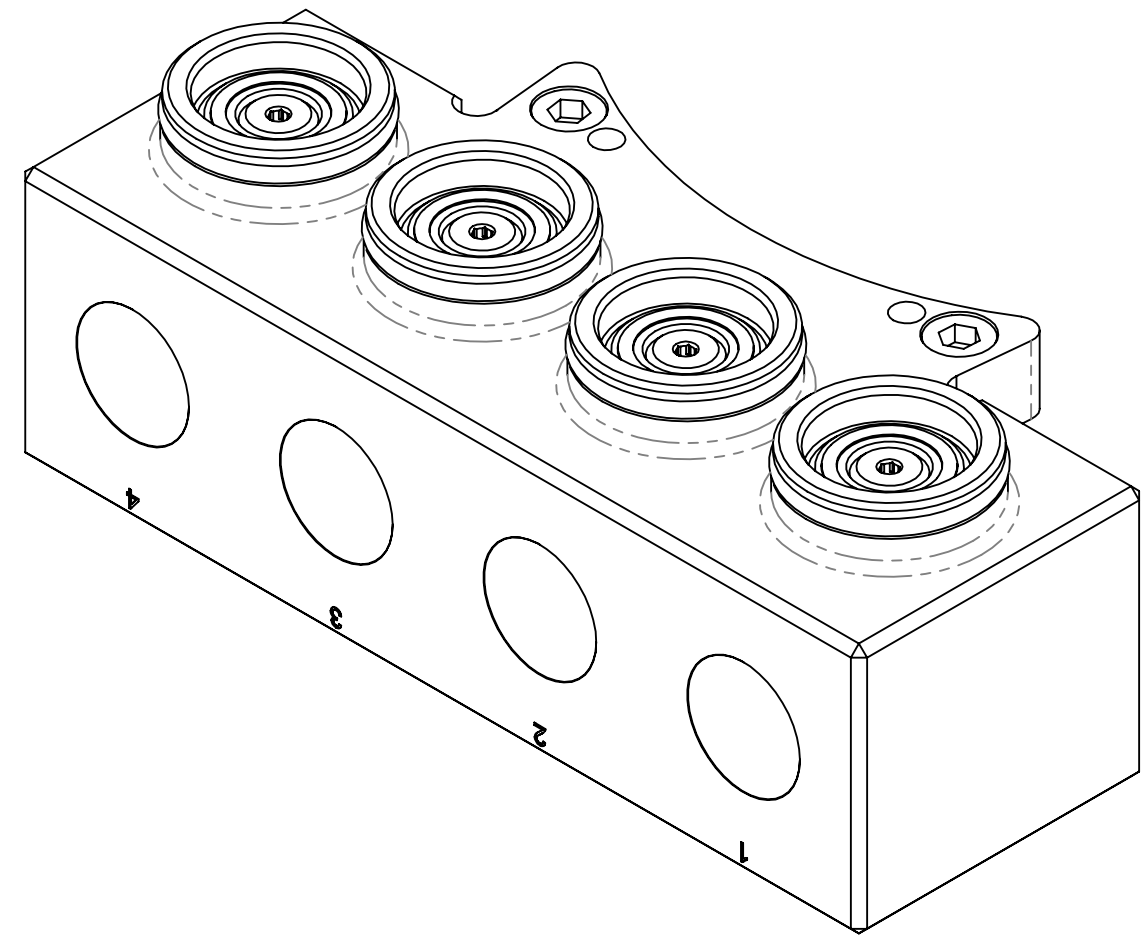
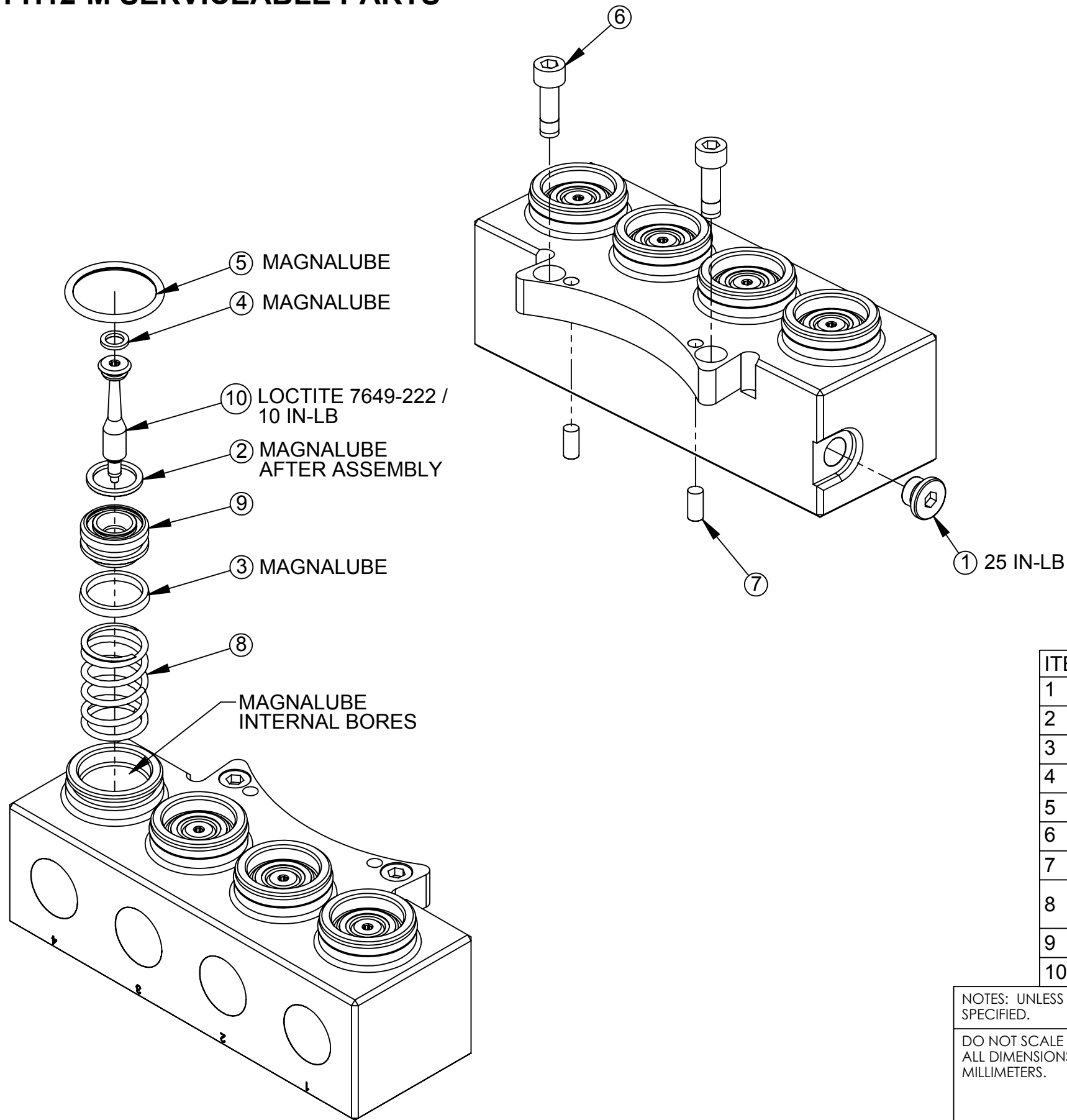
1031 Goodworth Drive, Apex, NC 27539, USA  
 Tel: +1.919.772.0115 Email: info@ati-ia.com  
 Fax: +1.919.772.8259 www.ati-ia.com  
 ISO 9001 Registered Company

PROPERTY OF ATI INDUSTRIAL AUTOMATION, INC. NOT TO BE REPRODUCED IN ANY MANNER EXCEPT ON ORDER OR WITH PRIOR WRITTEN AUTHORIZATION OF ATI.



DRAWN BY: K. ZACHARY 12/04/17	TITLE		
CHECKED BY: B. KENDRICK 12/19/17	FH12 F/A MASTER WITH AP5 AIR ONLY TOOL DRAWING		
PROJECT # 170515-3 SHEET 1 OF 3	SCALE	SIZE	DRAWING NUMBER
	1:1	B	9630-20-FH12M AP5T
			REVISION
			04

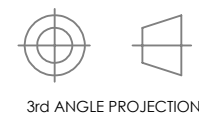
# FH12-M SERVICEABLE PARTS



ITEM NO.	QTY	PART NUMBER	DESCRIPTION
1	1	3405-1000002-00	G1/8 Plug, Hex Socket, O-Ring Seal
2	4	3410-0001065-01	O-Ring 14MM X 2MM Buna
3	4	3410-0001068-01	Mini U-Cup Seal 18mm ID x 22mm Buna
4	4	3410-0001183-01	O-Ring 6MM X 2MM Buna D90
5	4	3410-0001477-01	O-RING, AS568-121, BUNA-N, D70
6	2	3500-1066020-21A	M6-1 x 20mm SHCS, SS, Pre-Applied
7	2	3540-0105010-21	5mm x 10mm Dowel Pin SST
8	4	3610-1912501-21	COMPRESSION SPRING, .845" OD, 1.250 FREE LENGTH, 31.7 LB/IN RATE, STAINLESS STEEL
9	4	3700-20-2994	Master Check Valve Piston
10	4	3700-20-10503	VALVE STEM, 3/8 TALL VALVE, M4 THREAD

NOTES: UNLESS OTHERWISE SPECIFIED.

DO NOT SCALE DRAWING. ALL DIMENSIONS ARE IN MILLIMETERS.

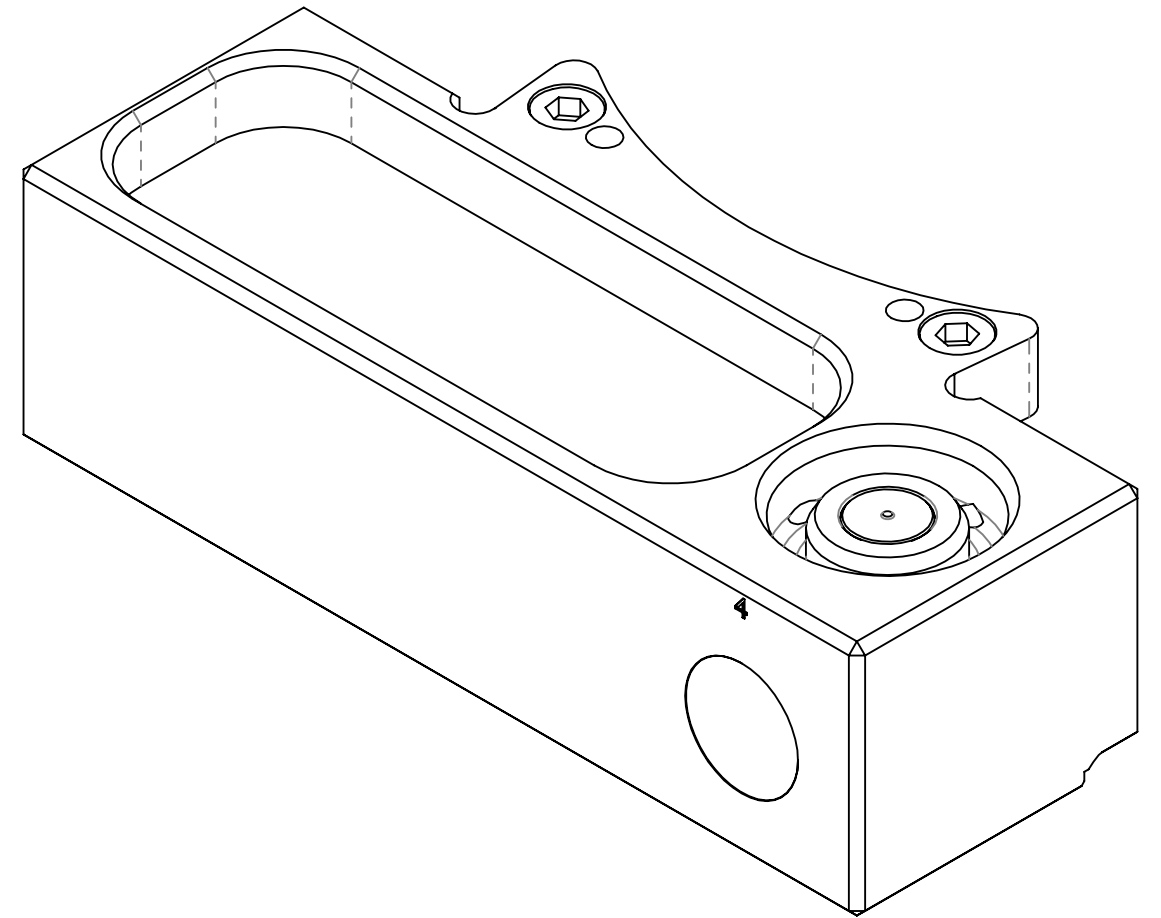
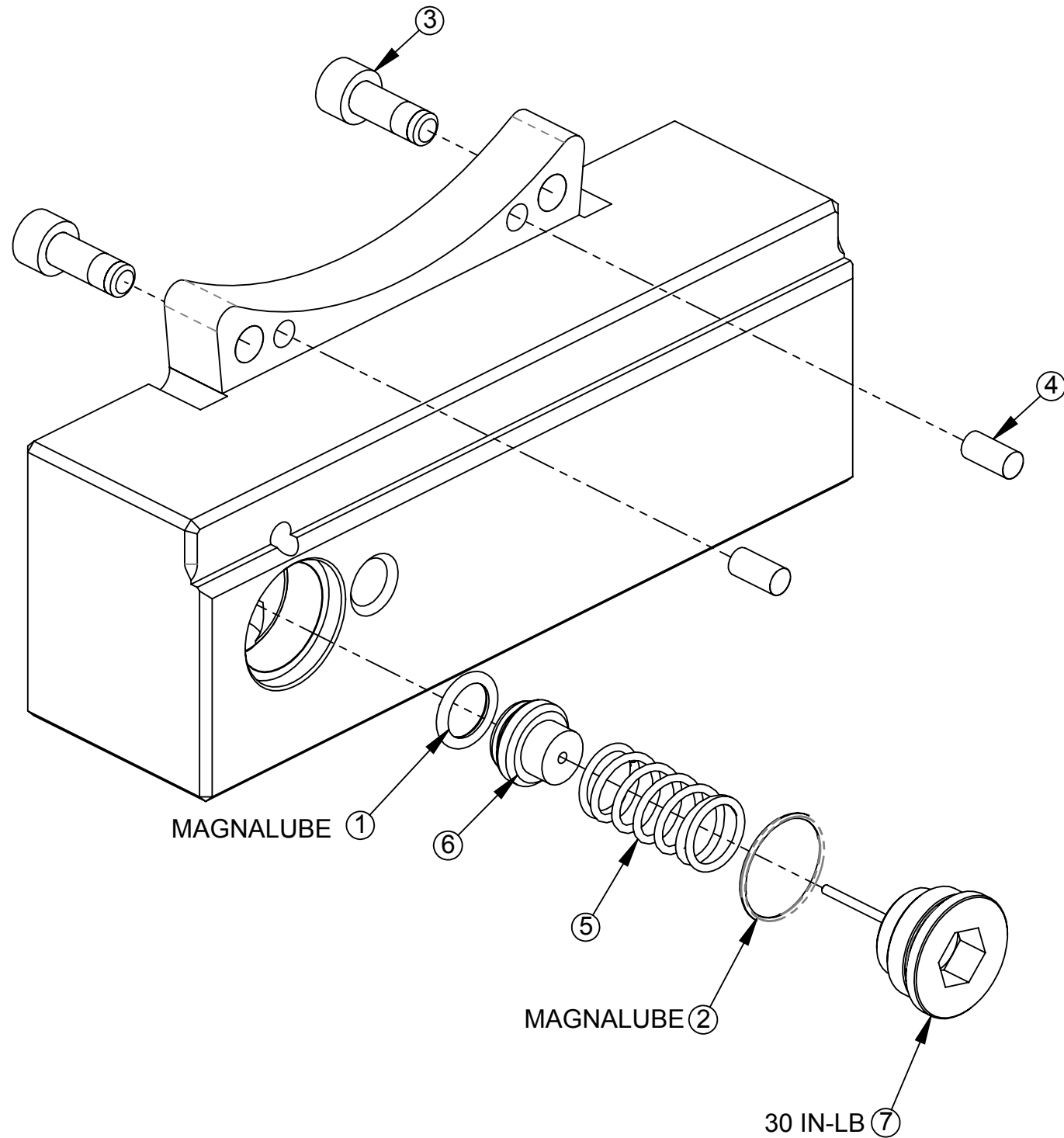


1031 Goodworth Drive, Apex, NC 27539, USA  
 Tel: +1.919.772.0115 Email: info@ati-ia.com  
 Fax: +1.919.772.8259 www.ati-ia.com  
 ISO 9001 Registered Company

PROPERTY OF ATI INDUSTRIAL AUTOMATION, INC. NOT TO BE REPRODUCED IN ANY MANNER EXCEPT ON ORDER OR WITH PRIOR WRITTEN AUTHORIZATION OF ATI.

DRAWN BY: K. ZACHARY 12/04/17		TITLE	
CHECKED BY: B. KENDRICK 12/19/17		FH12 F/A MASTER WITH AP5 AIR ONLY TOOL DRAWING	
PROJECT #	170515-3	SHEET	2 OF 3
SCALE	1:1	SIZE	B
DRAWING NUMBER	9630-20-FH12M AP5T		REVISION
			04

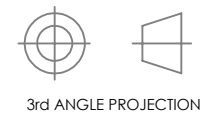
# AP5-T SERVICEABLE PARTS



ITEM NO.	QTY	PART NUMBER	DESCRIPTION
1	1	3410-0001067-01	O-ring, 10mm x 2mm, Buna N, Dur. 90
2	1	3410-0001284-01	O-ring, .669OD x .047 wall, 70D, Buna-N
3	2	3500-1066016-21A	M6-1 x 16mm SHCS, SS, Pre-Applied
4	2	3540-0105010-21	5mm x 10mm Dowel Pin SST
5	1	3610-2712500-20	Spring, Fluid/Air Module, Tool
6	1	3700-20-1457	Tool Fluid/Air Check Valve Piston
7	1	9005-20-1515	3/8" Check Port Long Plug with Dowel

NOTES: UNLESS OTHERWISE SPECIFIED.

DO NOT SCALE DRAWING. ALL DIMENSIONS ARE IN MILLIMETERS.



1031 Goodworth Drive, Apex, NC 27539, USA  
 Tel: +1.919.772.0115 Email: info@ati-ia.com  
 Fax: +1.919.772.8259 www.ati-ia.com  
 ISO 9001 Registered Company

PROPERTY OF ATI INDUSTRIAL AUTOMATION, INC. NOT TO BE REPRODUCED IN ANY MANNER EXCEPT ON ORDER OR WITH PRIOR WRITTEN AUTHORIZATION OF ATI.

DRAWN BY: K. ZACHARY 12/04/17		TITLE	
CHECKED BY: B. KENDRICK 12/19/17		FH12 F/A MASTER WITH AP5 AIR ONLY TOOL DRAWING	
PROJECT #	170515-3	SHEET	3 OF 3
SCALE	1:1	SIZE	B
DRAWING NUMBER	9630-20-FH12M AP5T		REVISION
			04