

1/4 Inch Hydraulic Module Specifications

Hydraulic Ports, (Qty) Size, (C_v) (2) 1/4", (0.46)

(Self-sealing on Master and Tool)

DO NOT exceed 3000 PSI (207 Bar) MAX Total Pressure.

DO NOT exceed 2300 PSI (160 Bar) MAX on Individual "A" Couplers.

DO NOT exceed 3000 PSI (207 Bar) MAX on Individual "B" Couplers.

Static Separation Force 36 lb [160 N]

Hydraulic Separation Force ***
(lb_f) = 0.13 x PSI
(N) = 8.4 x Bar

*** Only one port is to be pressurized at any given time.

Note 1: In the part numbering scheme "F2HX14X" replace the first X with "G" for G (BSPP) or "N" for NPT threads and the second X with "A" or "B" for 2300 PSI or 7200 PSI couplers respectively.

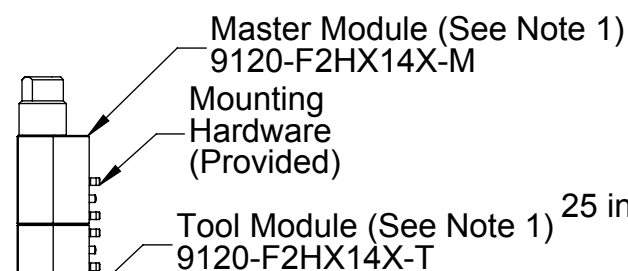
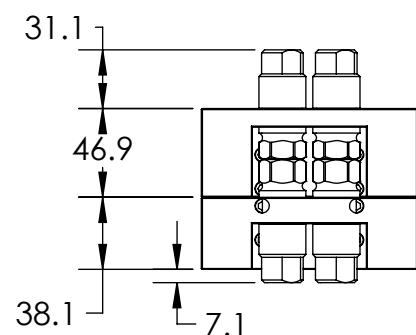
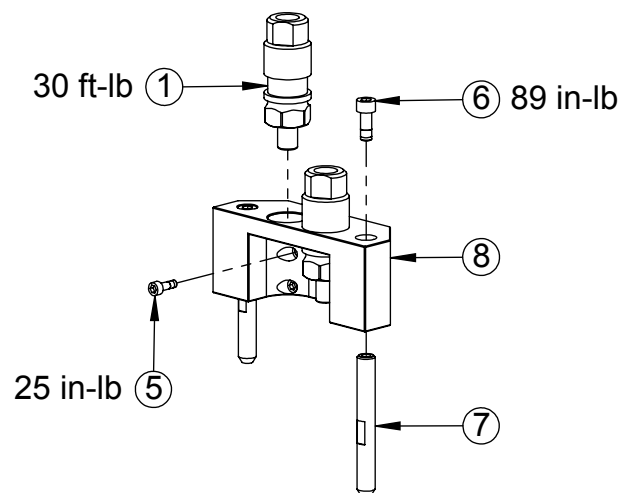
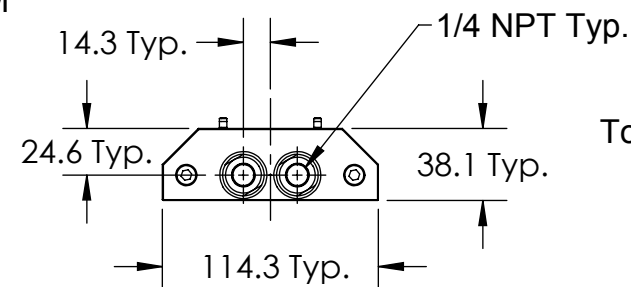
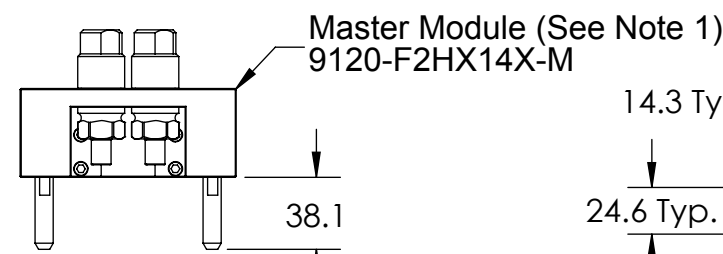
Refer to ATI Drawings:

9630-20-HYD For Information on Coupler Plumbing and Application/Use.

9630-20-COUPLER For Information on Coupler Maintenance.

ALL Connections MUST be by Flexible Lines/Hoses. Hard Pipe is NOT Permissible.

Rev.	Description	Initiator	Date
02	ECO 17985; Updated specifications to read: DO NOT exceed 2300 PSI (160 Bar) MAX on Individual "A" Couplers.	MLS	6/19/2019



Master Module (See Note 1)
9120-F2HX14X-M
Tool Module (See Note 1)
9120-F2HX14X-T

Tool Module (See Note 1)
9120-F2HX14X-T

85.1
Coupled
Approx.

30 ft-lb

25 in-lb

Tool Side Protective Cover Module (See Note 1)
9120-F2H14PC-T (Optional)

9120-F2H14PC-T

25 in-lb (1)

12 in-lb (1)

Protective Cover

ITEM NO.	QTY.	PART NUMBER	DESCRIPTION
1	6	3500-1062012-15A	M4-0.7 x 12mm SHCS, Blue, Pre-Applied
2	2	3510-5016005-21	Fender Washer, 3/16"x1", .05" Thk, SS
3	2	3700-20-8497	F2H14PC-T Coupler Shroud
4	1	9005-20-2238	F2H14 Carrier Assembly, Tool

An optional protective cover is available and may be used when hydraulic couplers are not required on the tool side.

Master Module Parts

ITEM NO.	QTY.	PART NUMBER	APPLICATION	DESCRIPTION
1	2	3405-1220032-01	F2HN14B	QD Plug, 1/4NPT, 7200 PSI, Viton Seals
	2	3405-1220028-01	F2HN14A	QD Plug, 1/4NPT, 2300 PSI, Viton Seals
	2	3405-1220023-01	F2HG14B	QD Plug, G1/4, 7200 PSI, Viton Seals
	2	3405-1220009-01	F2HG14A	QD Plug, G1/4, 2300 PSI, Viton Seals
5	4	3500-1062012-15A	ALL	M4-0.7 x 12mm SHCS, Blue, Pre-Applied
6	2	3500-1066016-15A	ALL	M6-1 x 16mm SHCS, Blue, Pre-Applied
7	2	3700-20-4517	ALL	Hydraulic Module Alignment Pin
8	1	9005-20-2237	ALL	F2H14-M Carrier Assembly

Tool Module Parts

ITEM NO.	QTY.	PART NUMBER	APPLICATION	DESCRIPTION
1	2	3405-1220033-01	F2HN14B	QD Socket, 1/4NPT, 7200 PSI, Viton Seals
	2	3405-1220027-01	F2HN14A	QD Socket, 1/4NPT, 2300 PSI, Viton Seals
	2	3405-1220024-01	F2HG14B	QD Socket, G1/4, 7200 PSI, Viton Seals
	2	3405-1220010-01	F2HG14A	QD Socket, G1/4, 2300 PSI, Viton Seals
5	4	3500-1062012-15A	ALL	M4-0.7 x 12mm SHCS, Blue, Pre-Applied
6	1	9005-20-2238	ALL	F2H14 Carrier Assembly, Tool

Coupler Halves Unscrew for Installation in Carrier Assemblies
Mount Carrier Assemblies to Tool Changer Before Installing Couplers

NOTES: UNLESS OTHERWISE SPECIFIED.

DO NOT SCALE DRAWING. ALL DIMENSIONS ARE IN INCHES.



3rd ANGLE PROJECTION



1031 Goodworth Drive, Apex, NC 27539, USA
Tel: +1.919.772.0115 Email: info@ati-ia.com
Fax: +1.919.772.8259 www.ati-ia.com
ISO 9001 Registered Company

PROPERTY OF ATI INDUSTRIAL AUTOMATION, INC. NOT TO BE REPRODUCED IN ANY MANNER EXCEPT ON ORDER OR WITH PRIOR WRITTEN AUTHORIZATION OF ATI.

DRAWN BY: D.Lawson-1/24/14

CHECKED BY: D. Wagner-1/27/14

PROJECT # 131009-1 SHEET 1 OF 1

TITLE

F2HX14X Customer Drawing

SCALE

1:4

SIZE

B

DRAWING NUMBER

9630-20-F2HX14X

REVISION

02