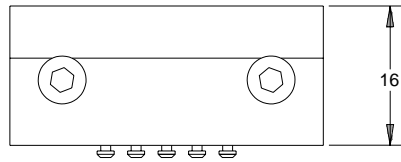


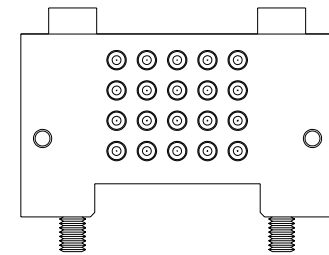
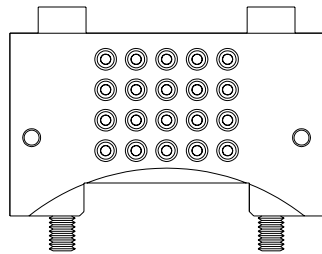
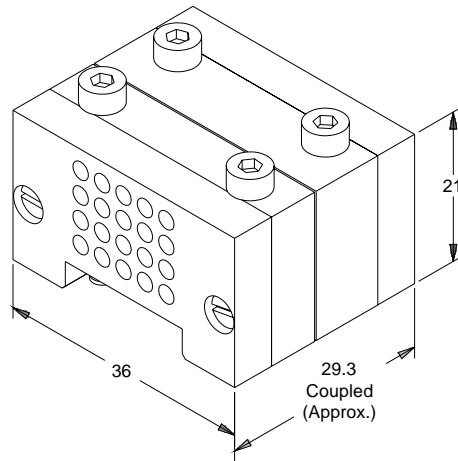
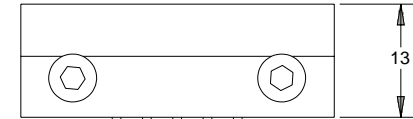
PROPERTY OF ATI INDUSTRIAL AUTOMATION, INC.
 NOT TO BE REPRODUCED IN ANY MANNER EXCEPT ON
 ORDER OR WITH PRIOR WRITTEN AUTHORIZATION OF ATI.

Rev.	Description	Initiator	Date
02	Initial Issue	PS	9/13/2004

E20-010 Master Module
(9120-E20M-010)

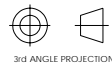


E20-010 Tool Module
(9120-E20T-010)



- Notes:
- The E20-010 is a customer configurable 20-pin module designed to fit the QC-10, providing 3A/50V rated gold plated contacts with solder connections in a miniature size.

NOTES: UNLESS OTHERWISE SPECIFIED
 DO NOT SCALE DRAWING. DRAWN IN SOLIDWORKS.
 ALL DIMENSIONS ARE IN MILLIMETERS.



3rd ANGLE PROJECTION



1031 Goodworth Drive, Apex, NC 27539, USA
 Tel: +1.919.772.0115 Email: info@ati-ia.com
 Fax: +1.919.772.8259 www.ati-ia.com
 ISO 9001 Registered Company

DRAWN BY: P.Sparrow 6/17/03	TITLE: E20-010 Module Drawing		
CHECKED BY: B.Digeso, 10/29/04	SCALE: 2:1	SIZE: B	DRAWING NUMBER: 9630-20-E20-010-02
WEIGHT LBS: .10	PRODUCT RELEASE # 030725-3 DATE: SHEET 1 OF 1		
ASSEMBLY REF:			