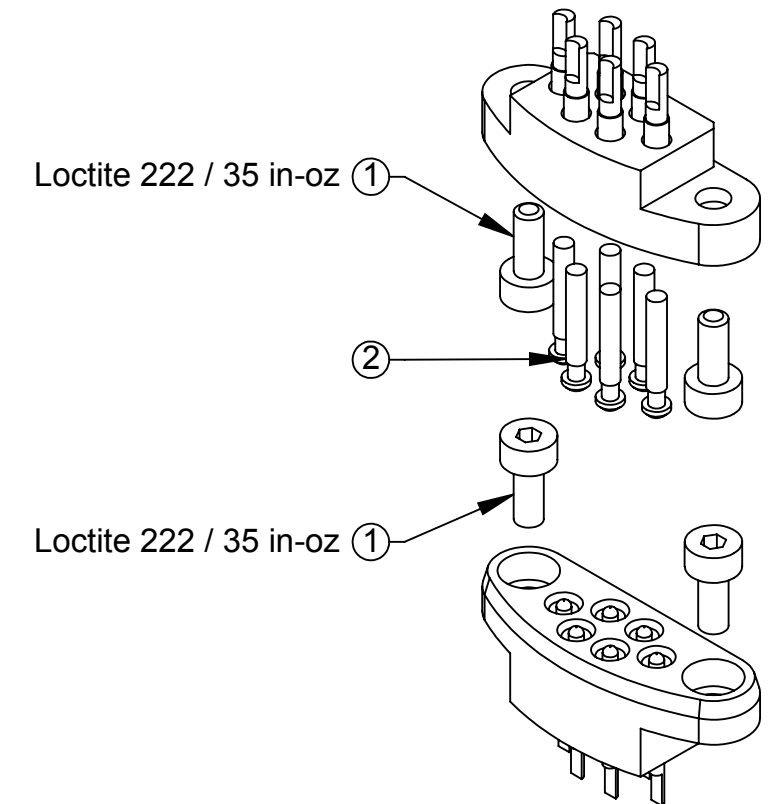
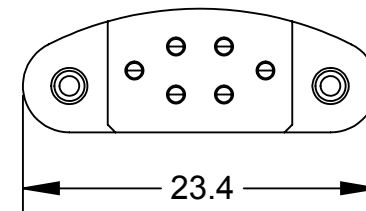
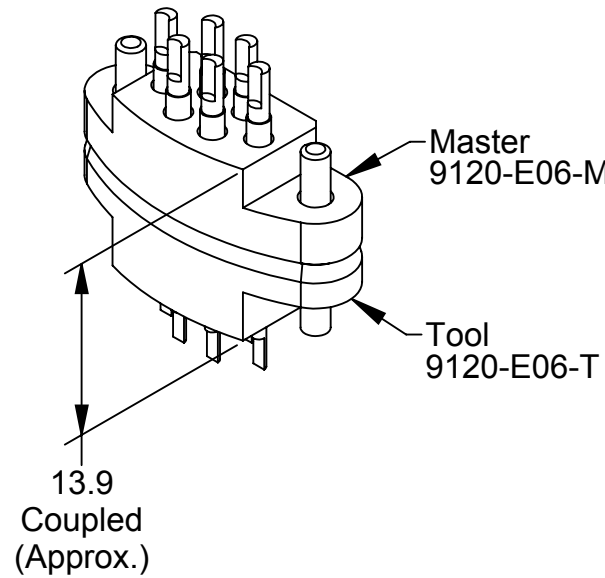
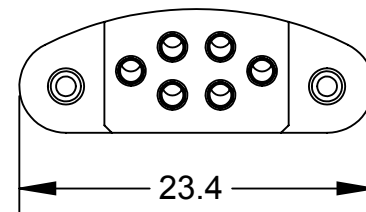
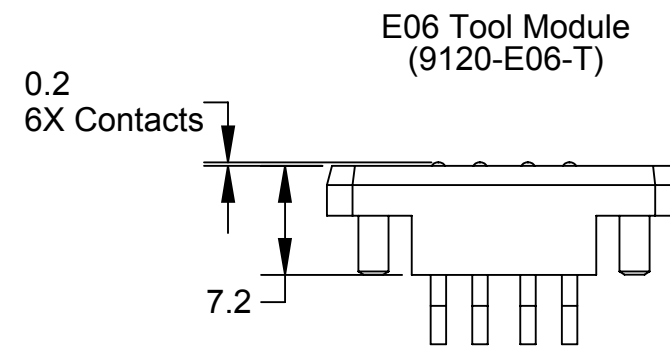
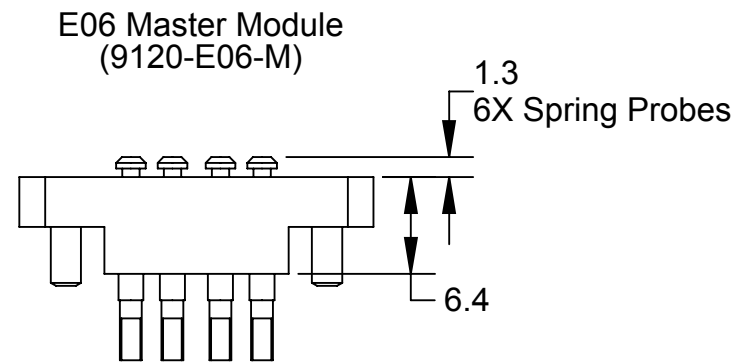
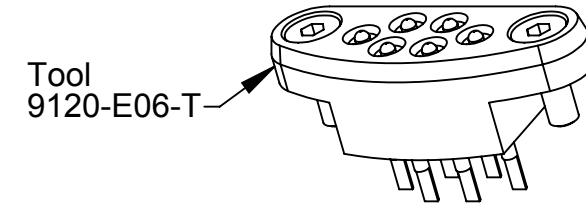
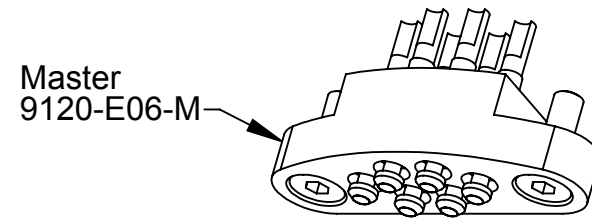


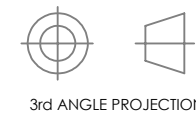
Rev.	Description	Initiator	Date
01	Initial Drawing	MJG	9/10/2014



- Notes:
1. The E06 is a customer configurable 6-pin module designed to fit the QC-001.
  2. Provides gold plated contacts with solder connections in a miniature size. Contacts are rated at 3A/50V.
  3. Maximum recommended wire gauge is 24 AWG.

NOTES: UNLESS OTHERWISE SPECIFIED.

DO NOT SCALE DRAWING. ALL DIMENSIONS ARE IN MILLIMETERS.



1031 Goodworth Drive, Apex, NC 27539, USA  
 Tel: +1.919.772.0115 Email: info@ati-ia.com  
 Fax: +1.919.772.8259 www.ati-ia.com  
 ISO 9001 Registered Company

PROPERTY OF ATI INDUSTRIAL AUTOMATION, INC. NOT TO BE REPRODUCED IN ANY MANNER EXCEPT ON ORDER OR WITH PRIOR WRITTEN AUTHORIZATION OF ATI.

DRAWN BY: M. Gala, 9/10/2014		TITLE	
CHECKED BY: D. Norton, 9/10/2014		E06 Module Drawing	
PROJECT # 140806-3	SHEET 1 OF 1	SCALE 2:1	SIZE B
		DRAWING NUMBER 9630-20-E06	REVISION 01