

Rev.	Description	Initiator	Date
04	Eco 15479; Sheet 3: Removed connection from input V-, add to Module Housing (GND) Sheet 3: Updated Note 8 to replace INPUT V- with "the module housing."	CF	3/21/2017

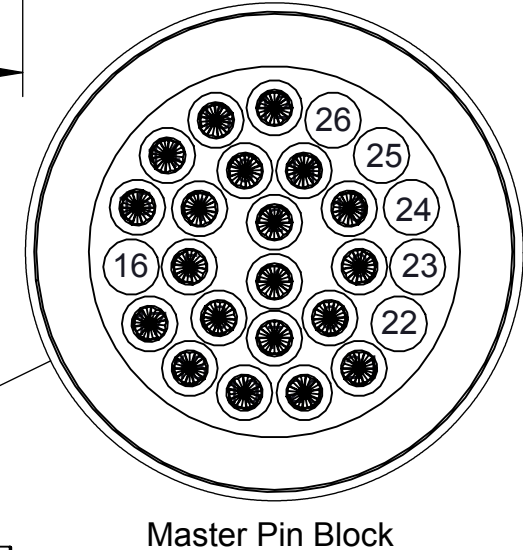
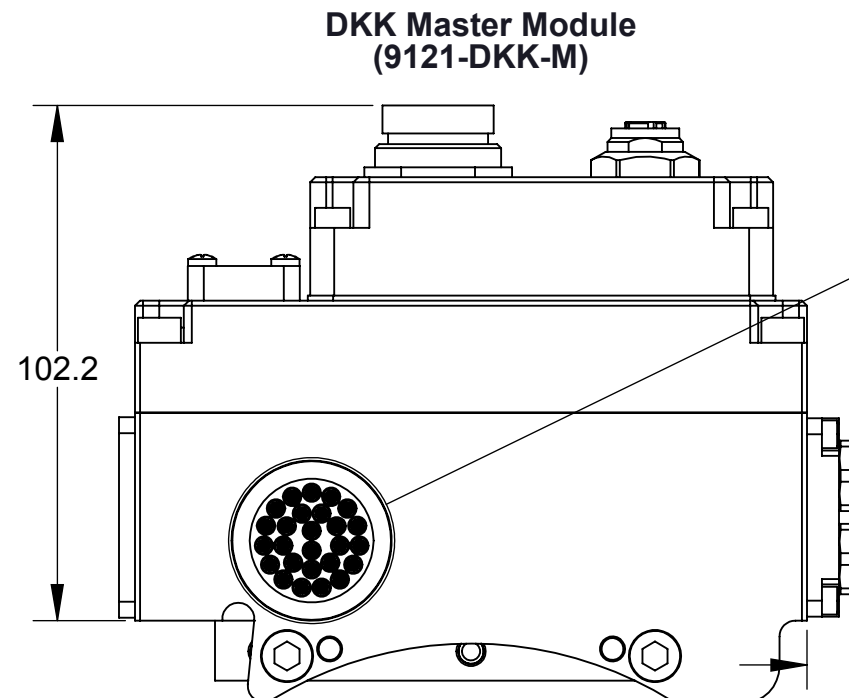
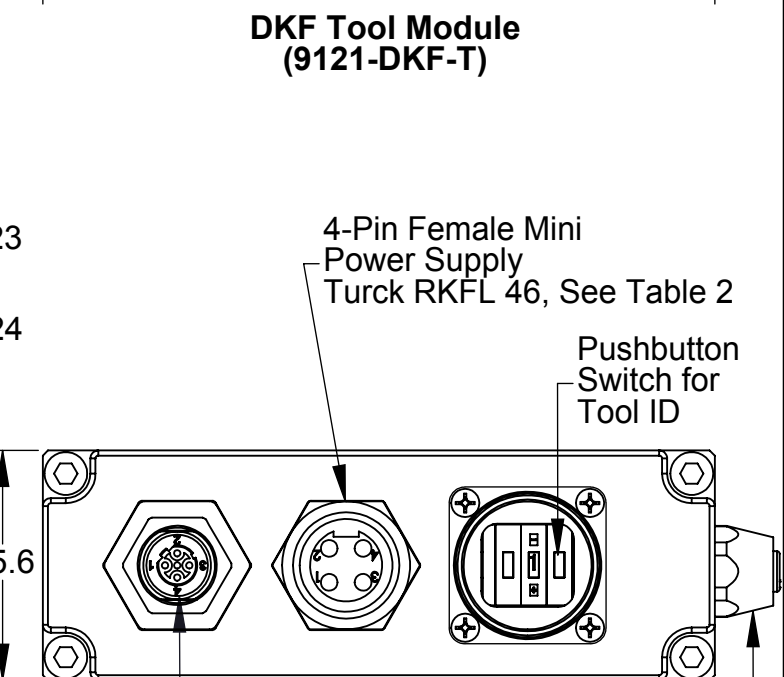
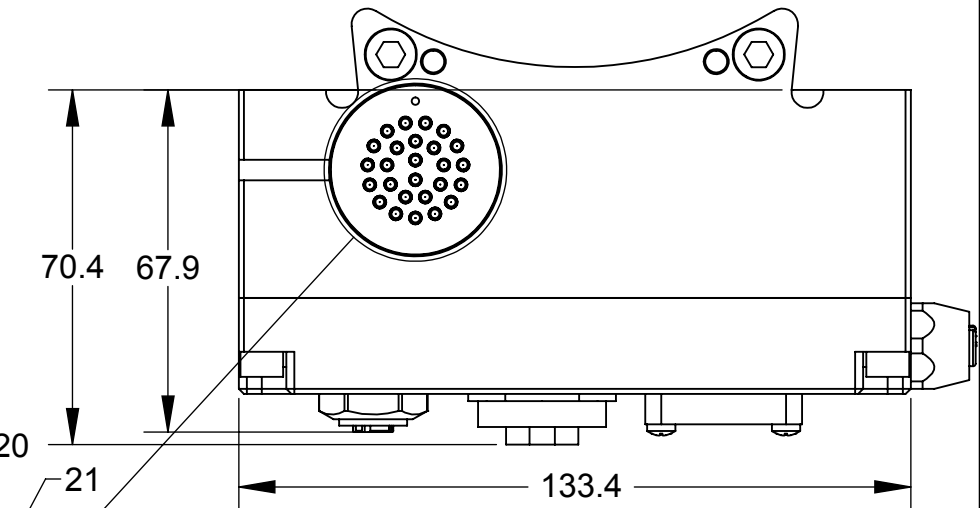
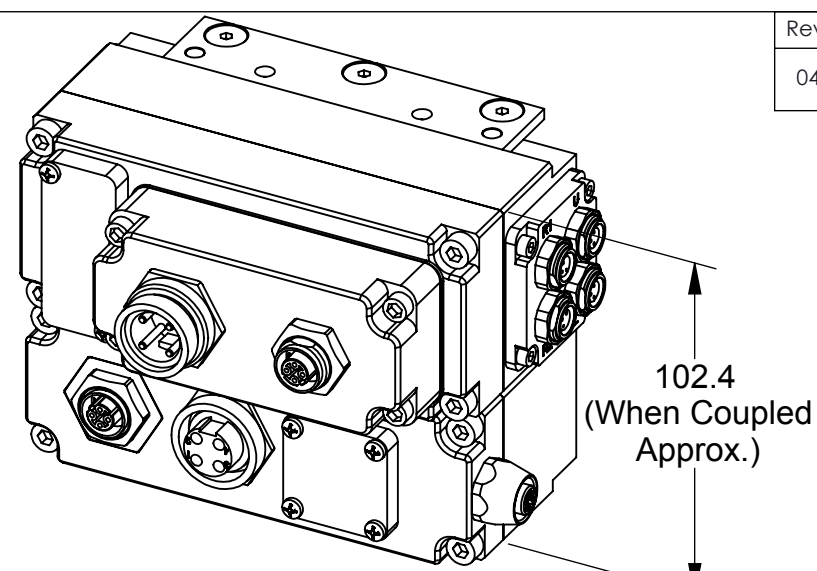
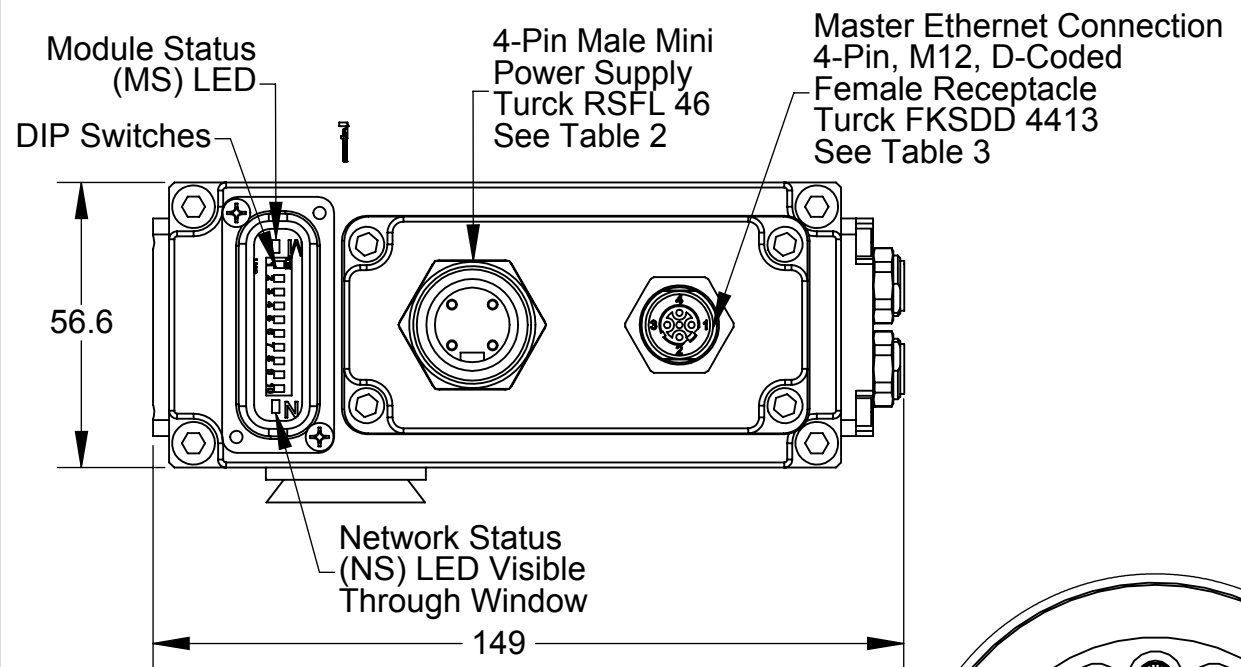
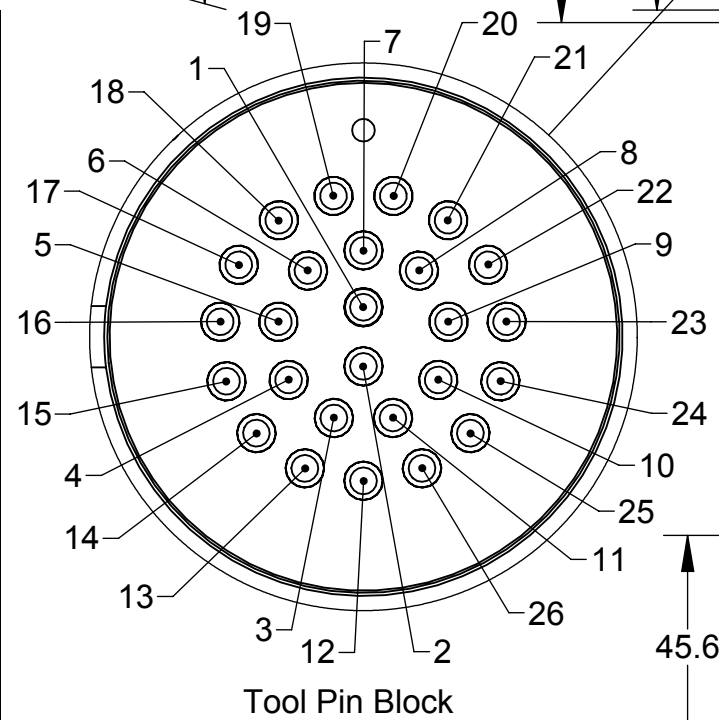


TABLE 1: PIN BLOCK SIGNALS	
1	Tool Presence In
2	N/C
3	Tx+
4	INPUT V+
5	INPUT V+ (TSI)
6	N/C
7	N/C
8	Rx+
9	Rx-
10	Ethernet Shield
11	N/C
12	TSIV
13	Tx-
14	Tool ID 1
15	Tool ID 2
16	Tool ID 4
17	Tool ID 8
18	OUTPUT V+
19	TSRV
20	N/C
21	INPUT V-
22	TSI Out
23	INPUT V-
24	TSI In
25	OUTPUT V-
26	N/C



- Notes:
- Reference the manual for information related to DIP switch settings, LED behavior and general product operation.
  - Connectors are oriented as shown unless otherwise specified.
  - Serviceable Parts are listed on Sheet 4. The electrical schematic is shown on Sheet 3.

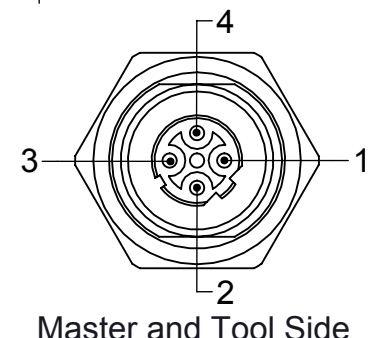
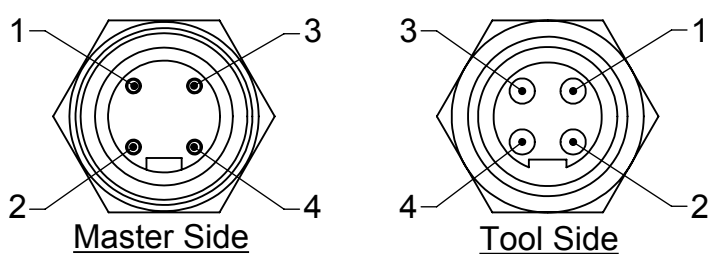


TABLE 2: POWER CONNECTOR	
1	OUTPUT V+
2	INPUT V+
3	INPUT V-
4	OUTPUT V-

TABLE 3: ETHERNET CONNECTOR	
1	Tx+
2	Rx+
3	Tx-
4	Rx-

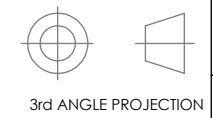
NOTES: UNLESS OTHERWISE SPECIFIED.  
DO NOT SCALE DRAWING. ALL DIMENSIONS ARE IN MILLIMETERS.

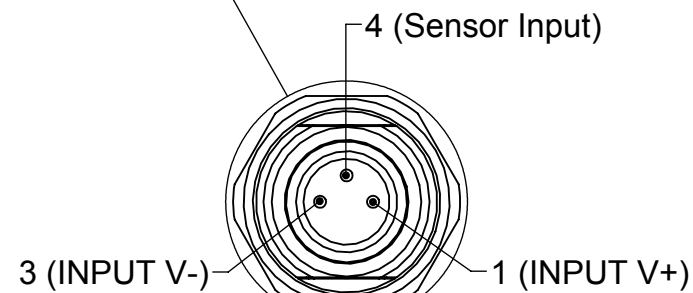
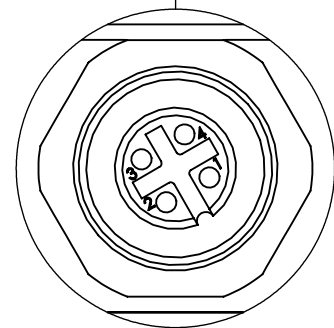
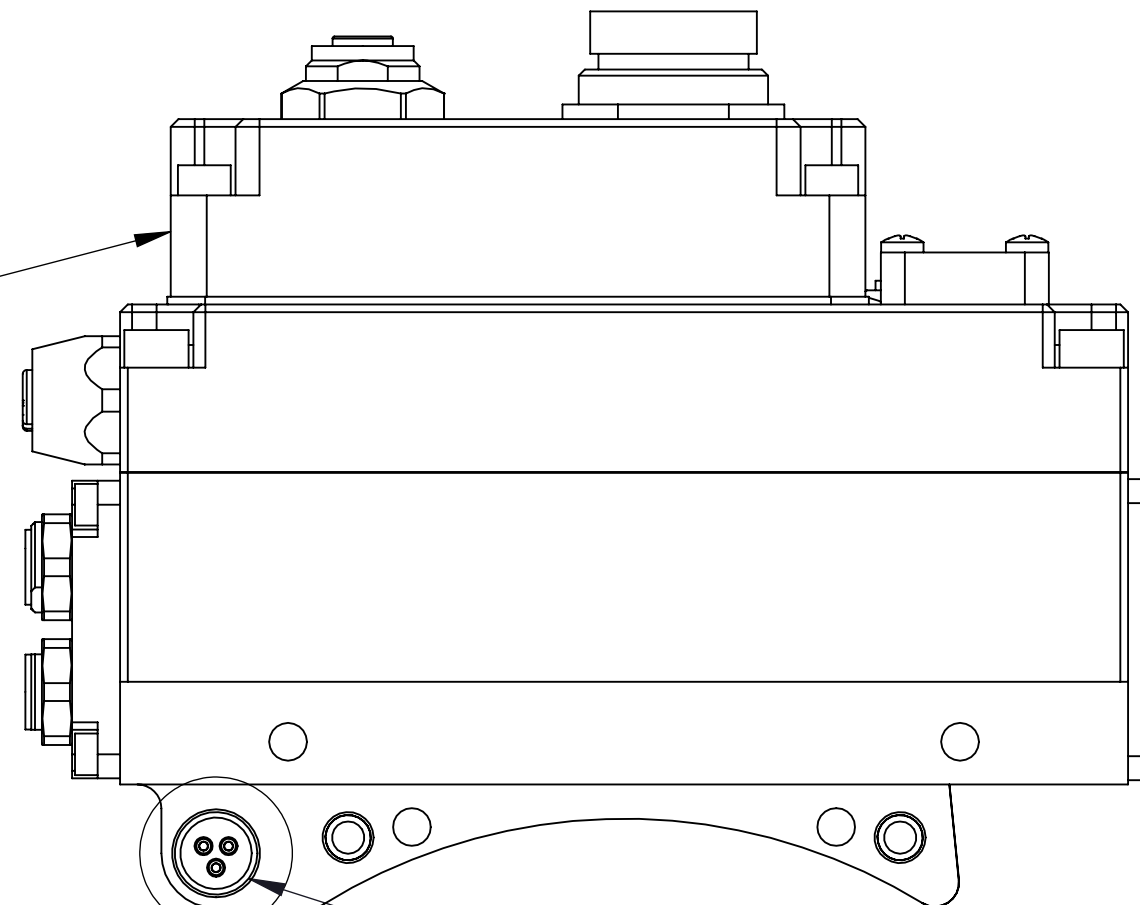
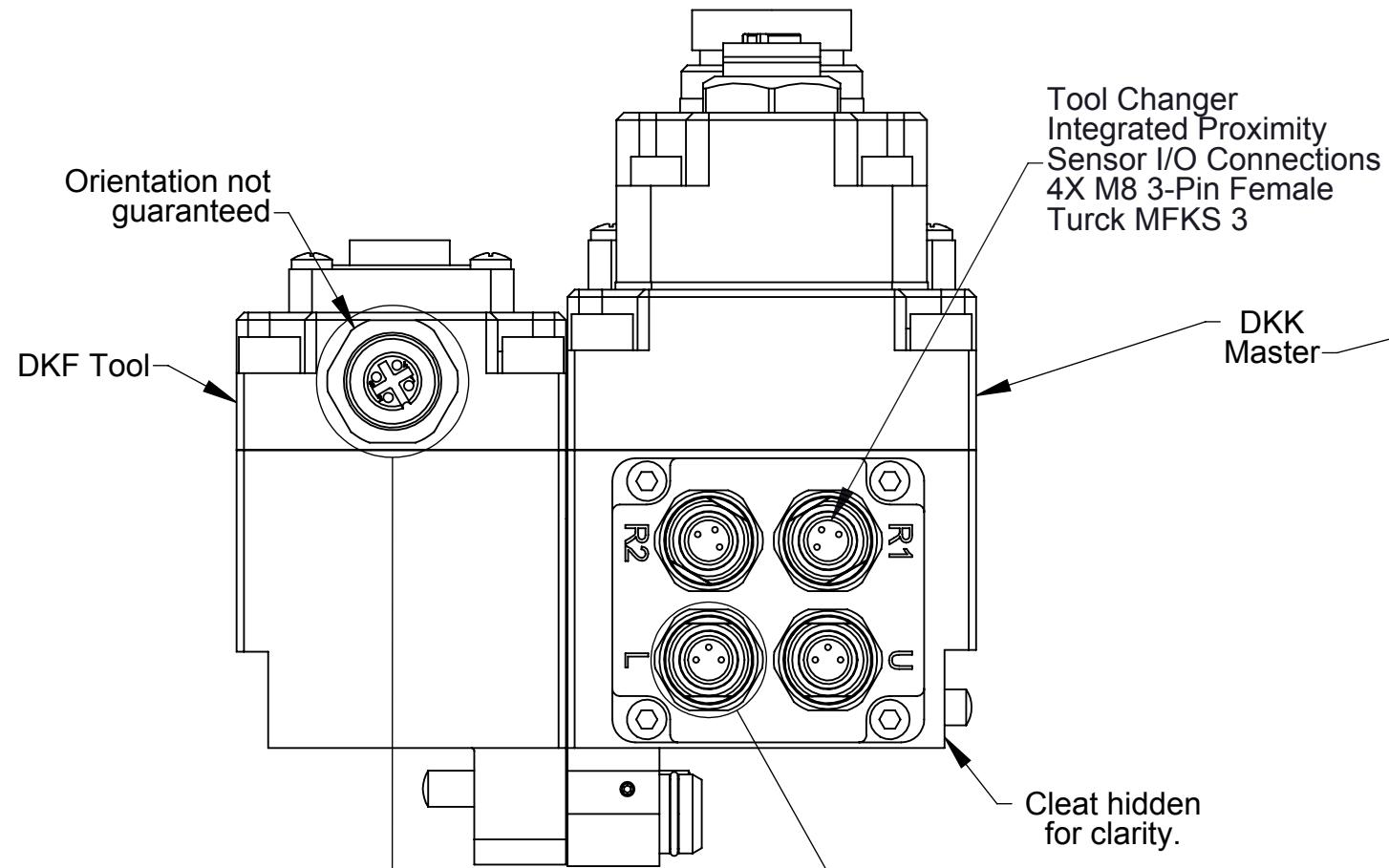


1031 Goodworth Drive, Apex, NC 27539, USA  
Tel: +1.919.772.0115 Email: info@ati-ia.com  
Fax: +1.919.772.8259 www.ati-ia.com  
ISO 9001 Registered Company

PROPERTY OF ATI INDUSTRIAL AUTOMATION, INC. NOT TO BE REPRODUCED IN ANY MANNER EXCEPT ON ORDER OR WITH PRIOR WRITTEN AUTHORIZATION OF ATI.

DRAWN BY: W. Berrocal, 6/1/15		TITLE	
CHECKED BY: A. Takla, 7/14/15 A. Strotzer, 7/9/15		DKK Master DKF Tool Module Customer Drawing	
PROJECT # 150429-5 SHEET 1 OF 4	SCALE 1:2	SIZE B	DRAWING NUMBER 9630-20-DKMM DKFT
			REVISION 04





Sensor Input Connection  
Typical

TABLE 4: TSI CONNECTOR	
1	INPUT V+ (TSI)
2	INPUT V+ (TSI)
3	TSI
4	TSIV

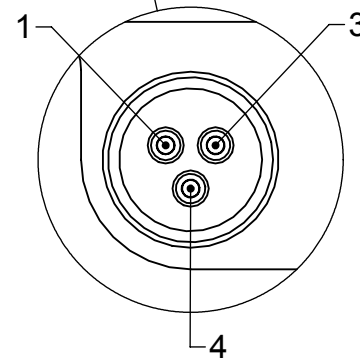


TABLE 5: VALVE CONNECTION	
1	OUTPUT V+ (Unlatch)
3	OUTPUT V- (Common)
4	OUTPUT V+ ( Latch)

NOTES: UNLESS OTHERWISE SPECIFIED.

DO NOT SCALE DRAWING. ALL DIMENSIONS ARE IN MILLIMETERS.



3rd ANGLE PROJECTION



1031 Goodworth Drive, Apex, NC 27539, USA  
 Tel: +1.919.772.0115 Email: info@ati-ia.com  
 Fax: +1.919.772.8259 www.ati-ia.com  
 ISO 9001 Registered Company

PROPERTY OF ATI INDUSTRIAL AUTOMATION, INC. NOT TO BE REPRODUCED IN ANY MANNER EXCEPT ON ORDER OR WITH PRIOR WRITTEN AUTHORIZATION OF ATI.

DRAWN BY: W. Berrocal, 6/1/15

CHECKED BY: A. Takla, 7/14/15  
 A. Strotzer, 7/9/15

PROJECT # 150429-5 SHEET 2 OF 4

TITLE

DKK Master DKF Tool Module Customer Drawing

SCALE  
2:3

SIZE  
B

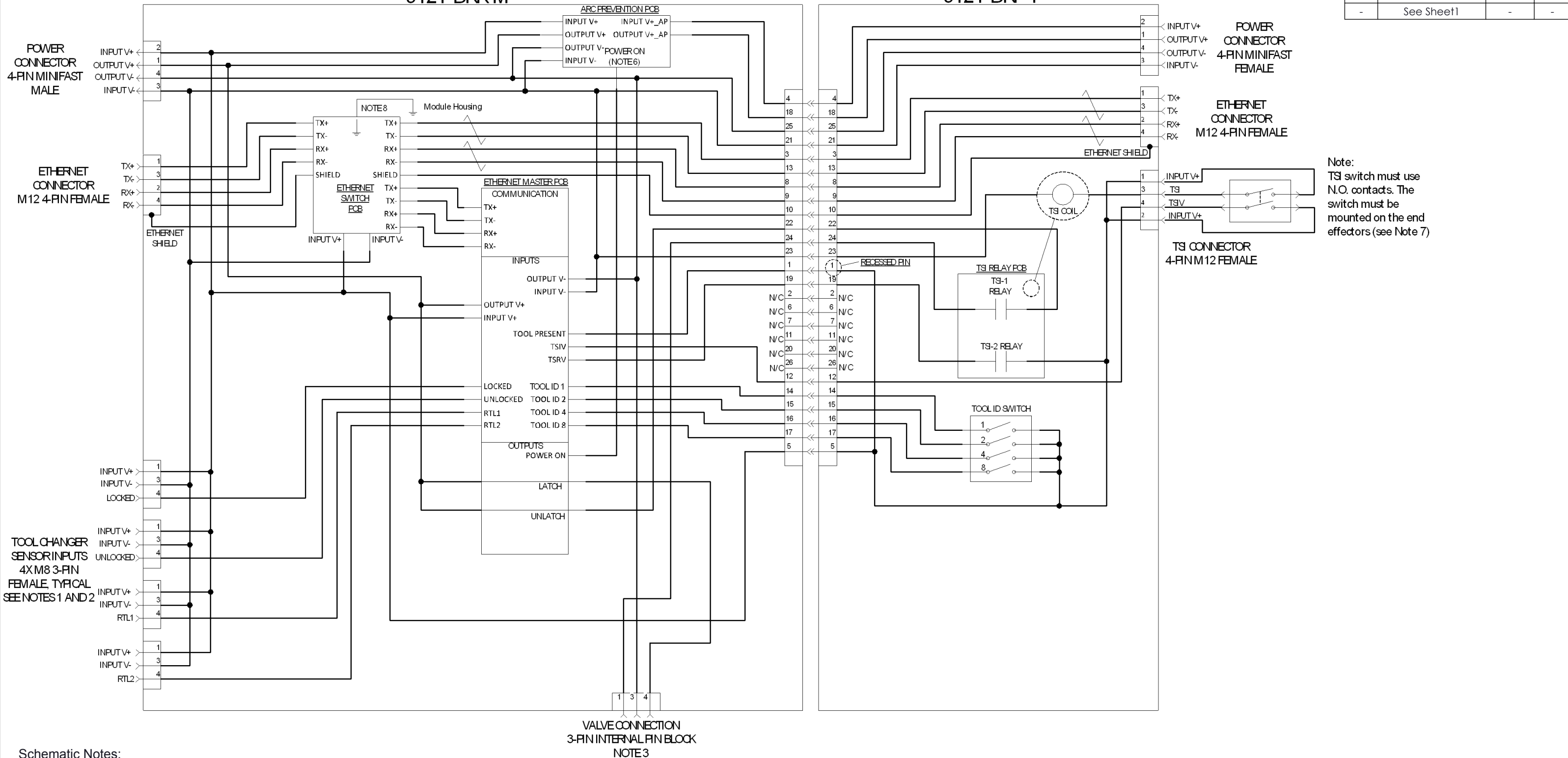
DRAWING NUMBER  
9630-20-DKKM DKFT

REVISION  
04

# 9121-DKK-M

# 9121-DKF-T

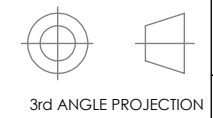
Rev.	Description	Initiator	Date
-	See Sheet1	-	-



- Schematic Notes:**
- Note that the sensors are powered by INPUT V+ power.
  - The complete tool changer package comes equipped with external cables that are connected to the sensors.
  - An internal pin block is used to transmit the Latch/Unlatch signal to the Valve Adapter.
  - Cables for Ethernet and Auxiliary Power to the DKK/DFK Modules are supplied by the user.
  - The Tool ID I/O is reported in the DKK Master Bitmap. Refer to the product manual for more information.
  - The Arc Prevention Circuits turns off OUTPUT Power and INPUT Power during coupling and uncoupling of the Master and Tool. The switching function is controlled by the "POWER ON" signal from the main PC Board. The TOOL PRESENT input is used to ensure that the spring/contact pins are touching when power is turned on. Refer to the product manual for additional information.
  - The limit switch connected to the TSI connector must have two sets of N.O. contacts (double pole single throw). A limit switch is available from ATI (p/n 9005-20-1165) but is not included with the DKK /DKF modules. Contact ATI for specific switch requirements.
  - IMPORTANT: The Ethernet Connector shell is capacitively coupled to the Module Housing.
  - The DKK Control Module is only compatible with double-solenoid control valves.
  - In the event that a Tool Changer equipped with the DKK Control Module is locked without a Tool, the only way to unlock the Tool Changer is to press the manual override located on the control valve.

NOTES: UNLESS OTHERWISE SPECIFIED.

DO NOT SCALE DRAWING. ALL DIMENSIONS ARE IN INCHES.

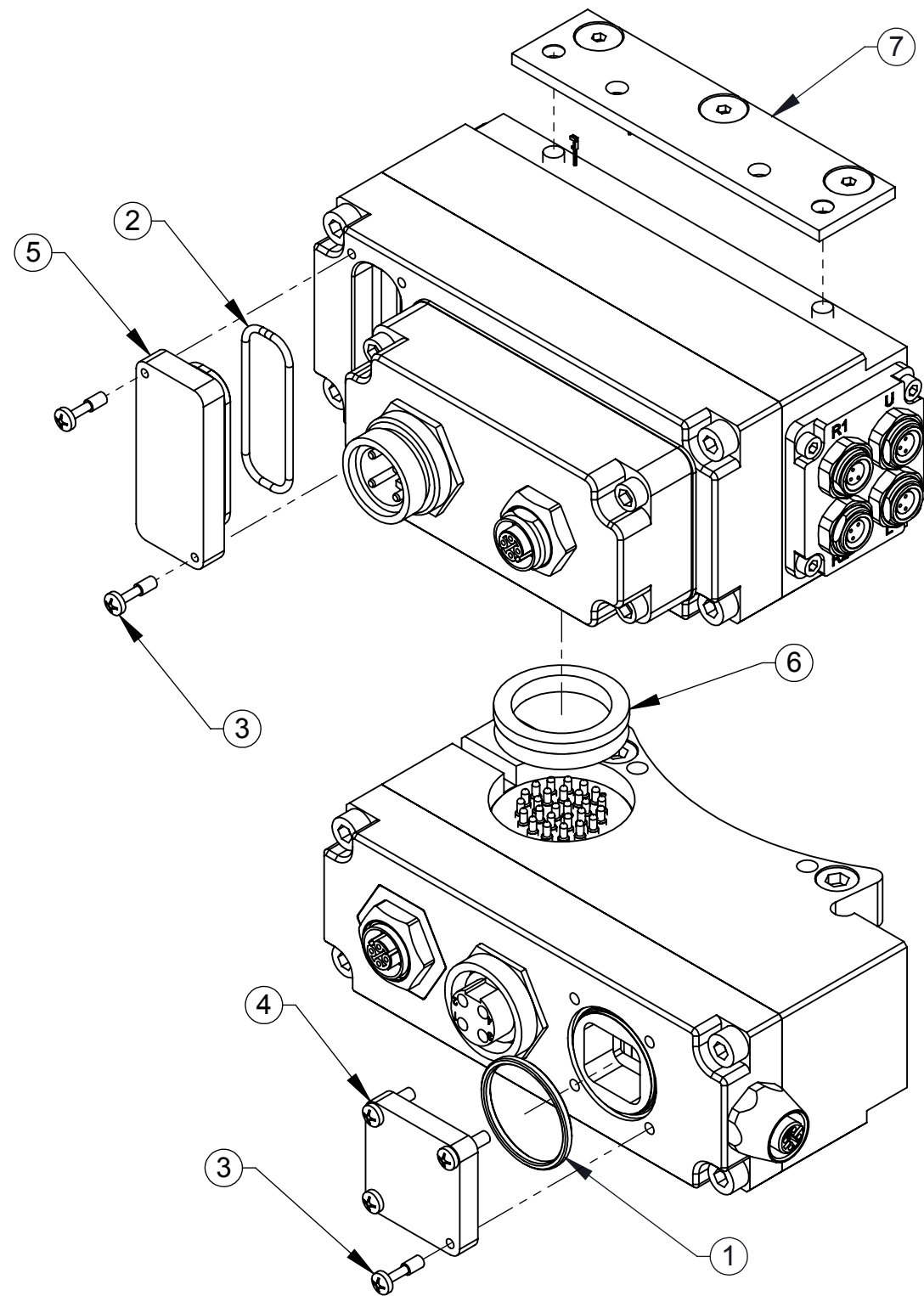


1031 Goodworth Drive, Apex, NC 27539, USA  
 Tel: +1.919.772.0115 Email: info@ati-ia.com  
 Fax: +1.919.772.8259 www.ati-ia.com  
 ISO 9001 Registered Company

PROPERTY OF ATI INDUSTRIAL AUTOMATION, INC. NOT TO BE REPRODUCED IN ANY MANNER EXCEPT ON ORDER OR WITH PRIOR WRITTEN AUTHORIZATION OF ATI.

DRAWN BY: W. Berrocal, 6/1/15	TITLE		
CHECKED BY: A. Takla, 7/14/15 A. Strotzer, 7/9/15	DKK Master DKF Tool Module Customer Drawing		
PROJECT # 150429-5 SHEET 3 OF 4	SCALE 1:10	SIZE B	DRAWING NUMBER 9630-20-DKKM DKFT
			REVISION 04

Rev.	Description	Initiator	Date
-	See Sheet1	-	-



9121-DKK-M / 9121-DKF-T SERVICEABLE PARTS			
ITEM	QTY	PART NUMBER	DESCRIPTION
1	1	3410-0001008-01	O-ring AS568A-018
2	1	3410-0001201-01	O-Ring AS568-024
3	6	3500-9957012-21	Pan Head M3 Captive Screw M3 X 12
4	1	3700-20-5844	Tool ID Window
5	1	3700-20-4820	Window, DJ Master, Annular Seal
6	1	4010-0000030-01	V-Ring Seal V-22A Nitrile
7	1	9005-20-1198	Master Cleat Sub-Assembly

NOTES: UNLESS OTHERWISE SPECIFIED.

DO NOT SCALE DRAWING. ALL DIMENSIONS ARE IN INCHES.



3rd ANGLE PROJECTION



1031 Goodworth Drive, Apex, NC 27539, USA  
 Tel: +1.919.772.0115 Email: info@ati-ia.com  
 Fax: +1.919.772.8259 www.ati-ia.com  
 ISO 9001 Registered Company

PROPERTY OF ATI INDUSTRIAL AUTOMATION, INC. NOT TO BE REPRODUCED IN ANY MANNER EXCEPT ON ORDER OR WITH PRIOR WRITTEN AUTHORIZATION OF ATI.

DRAWN BY: W. Berrocal, 6/1/15

CHECKED BY: A. Takla, 7/14/15  
 A. Strotzer, 7/9/15

PROJECT # 150429-5 SHEET 4 OF 4

TITLE

DKK Master DKF Tool Module Customer Drawing

SCALE  
1:10

SIZE  
B

DRAWING NUMBER  
9630-20-DKKM DKFT

REVISION  
04