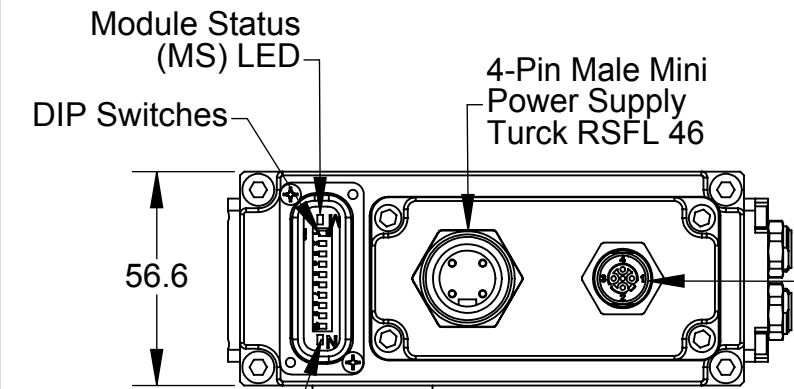


Notes:

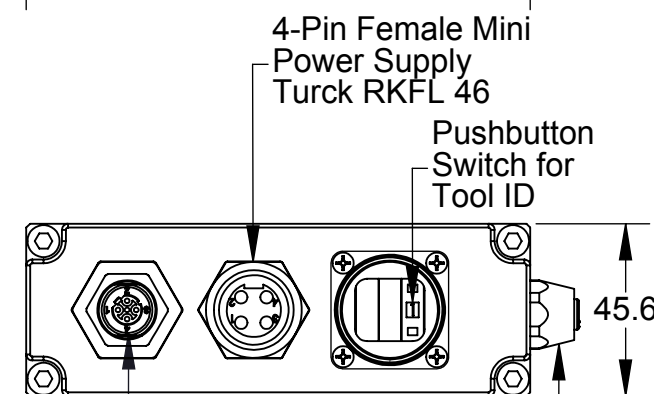
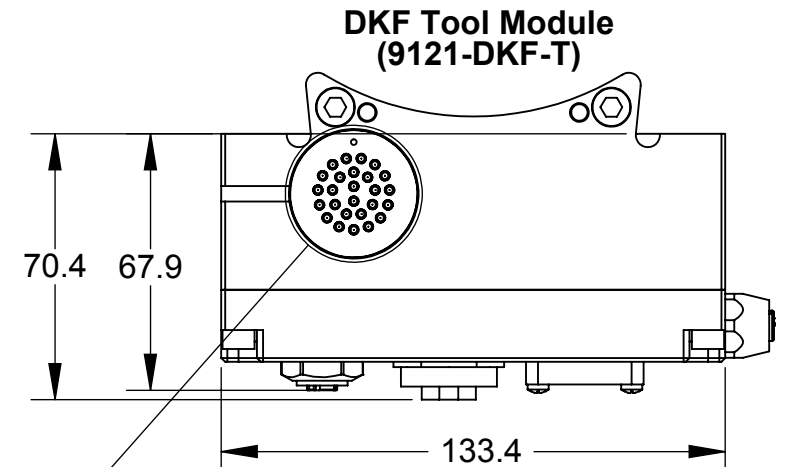
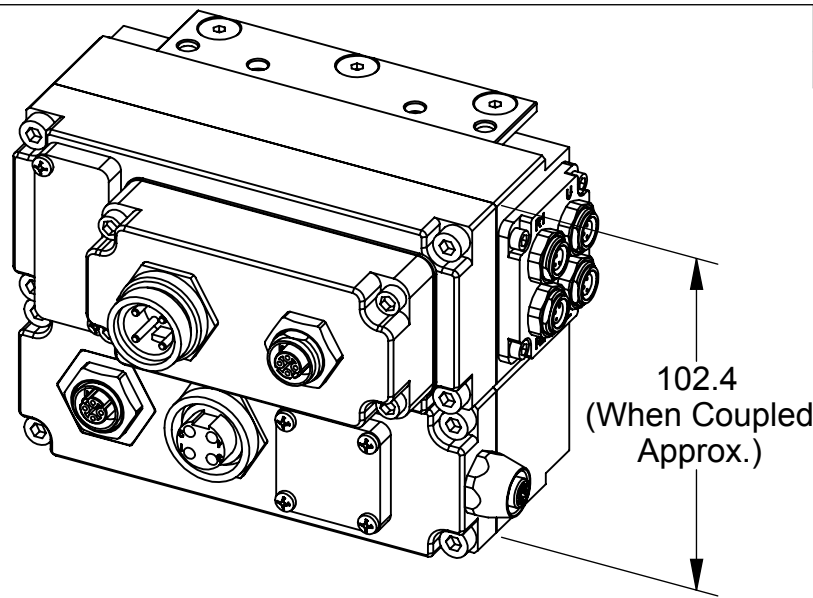
1. Reference the manual for information related to DIP switch settings, LED behavior and general product operation.
2. Connectors are oriented as shown unless otherwise specified.
3. Unless otherwise noted, connectors at 1:1 scale, pin blocks at 2:1 scale.
4. Serviceable Parts are listed on Sheet 2. The electrical schematic is shown on Sheet 3.

Rev.	Description	Initiator	Date
03	Eco 13035; Removed Tool Cleat Assembly.	CF	3/18/2015



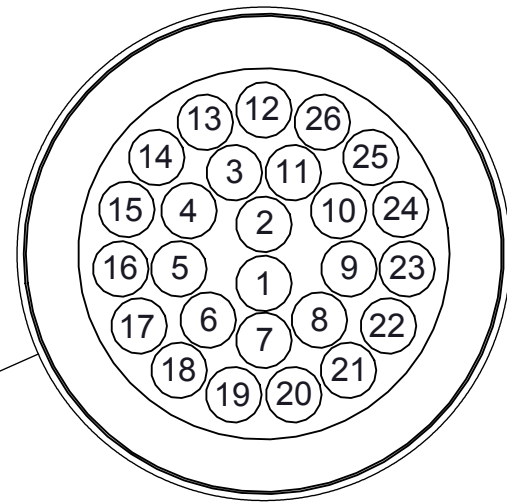
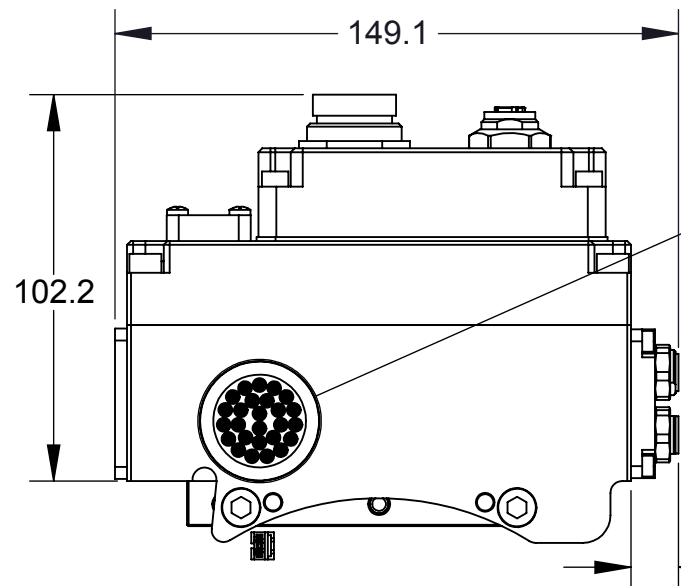
DKG Master Module (9121-DKG-M)

Master Ethernet Connection
4-Pin, M12, D-Coded Female Receptacle
Turck FKDD 4412

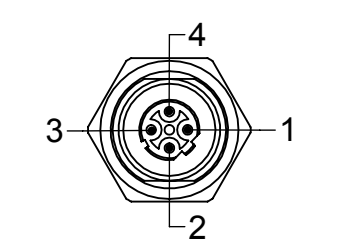
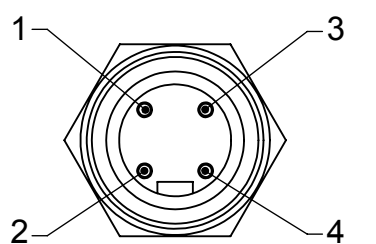
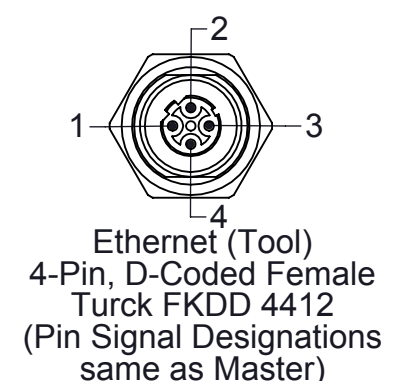
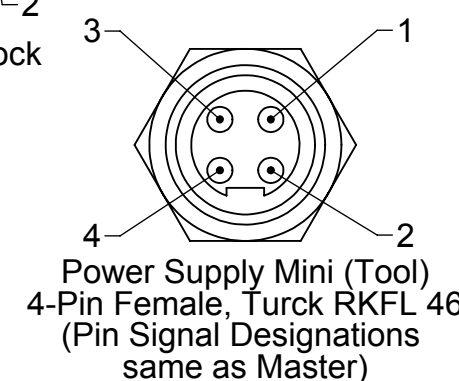
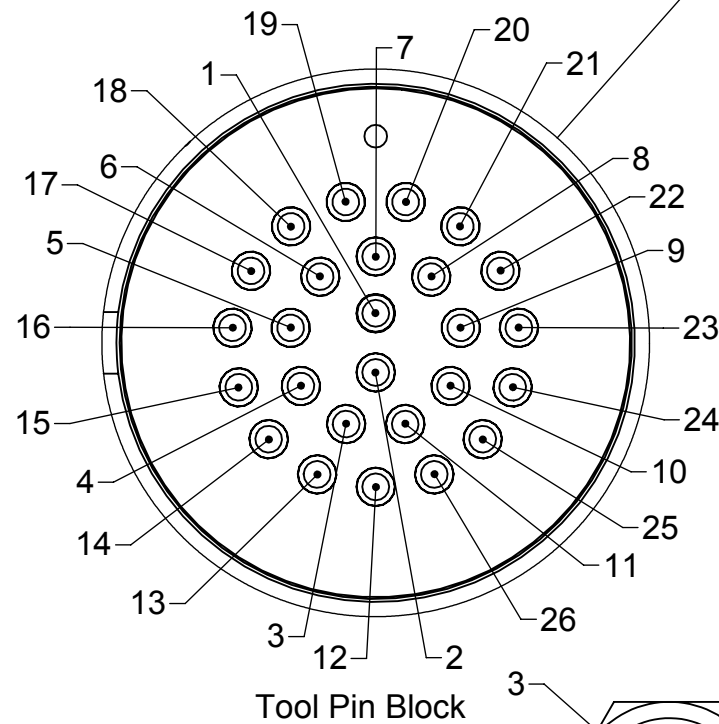


Tool Ethernet Connection
4-Pin, M12, D-Coded Female Receptacle
Turck FKDD 4412

TSI Connection
4-Pin, M12, Female
Turck FK4.4-0.5/18.25



Pin	Description
1	Tool Presence In
2	N/C
3	Tx+
4	Input & Logic Power V+
5	Tool Presence Out
6	N/C
7	N/C
8	Rx+
9	Rx-
10	Ethernet Shield
11	N/C
12	TSIV
13	Tx-
14	Tool ID 1
15	Tool ID 2
16	Tool ID 4
17	Tool ID 8
18	Output Power V+
19	TSRV
20	N/C
21	Input & Logic Power V-
22	TSI Out
23	Input & Logic Power V-
24	TSI In
25	Output Power V-
26	N/C



Pin	Power Supply
1	Output Power V+
2	Input and Logic Power V+
3	Input and Logic Power V-
4	Output Power V-

Ethernet Connector	
1	Tx+
2	Rx+
3	Tx-
4	Rx-

NOTES: UNLESS OTHERWISE SPECIFIED.

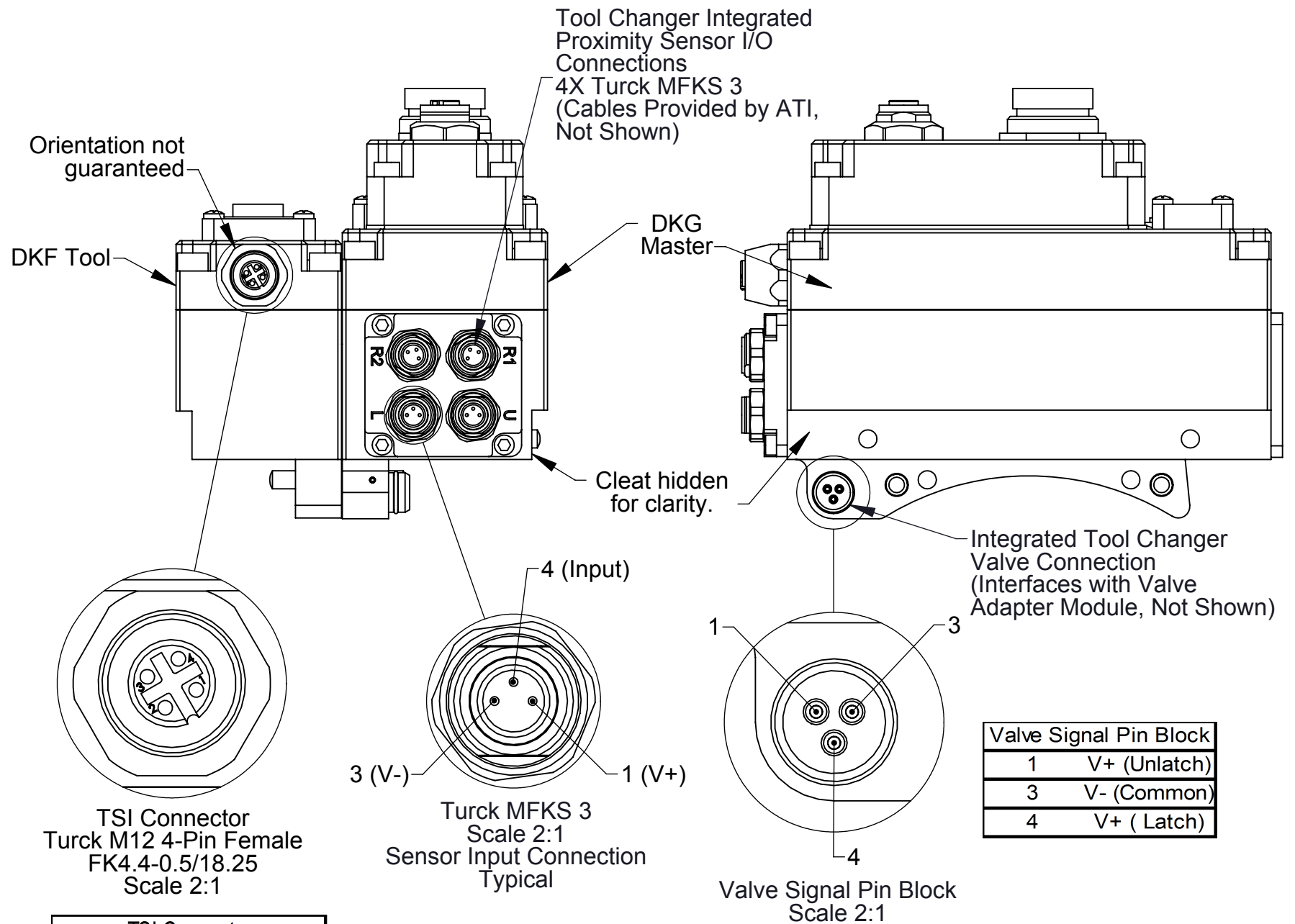
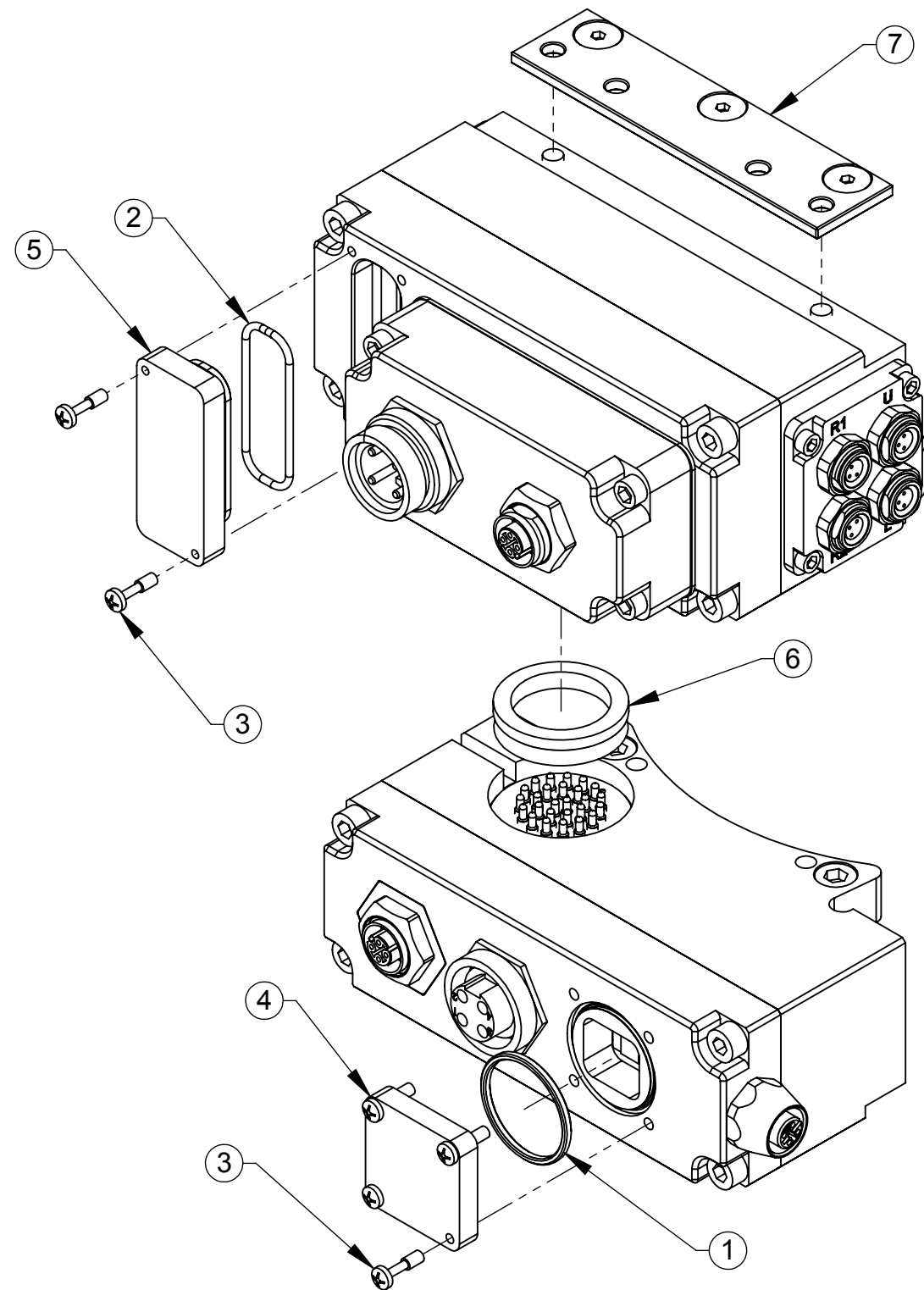
DO NOT SCALE DRAWING. ALL DIMENSIONS ARE IN MILLIMETERS.



1031 Goodworth Drive, Apex, NC 27539, USA
Tel: +1.919.772.0115 Email: info@ati-ia.com
Fax: +1.919.772.8259 www.ati-ia.com
ISO 9001 Registered Company

PROPERTY OF ATI INDUSTRIAL AUTOMATION, INC. NOT TO BE REPRODUCED IN ANY MANNER EXCEPT ON ORDER OR WITH PRIOR WRITTEN AUTHORIZATION OF ATI.

DRAWN BY: A. Takla, 03/12/13		TITLE	
CHECKED BY: W. Berrocal, 03/12/13 A. Strotzer, 03/13/13		DKG Master DKF Tool Module Customer Drawing	
PROJECT # 130111-4	SHEET 1 OF 3	SCALE 1:2	SIZE B
DRAWING NUMBER 9630-20-DKGM DKFT		REVISION 03	



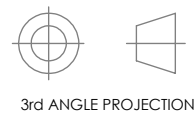
TSI Connector	
1	Input & Logic Power V+
2	Input & Logic Power V+
3	TSI
4	TSIV

Valve Signal Pin Block	
1	V+ (Unlatch)
3	V- (Common)
4	V+ (Latch)

9121-DKG-M / 9121-DKF-T SERVICEABLE PARTS			
ITEM	QTY	PART NUMBER	DESCRIPTION
1	1	3410-0001008-01	O-ring AS568A-018
2	1	3410-0001201-01	O-Ring AS568-024
3	6	3500-9957012-21	Pan Head M3 Captive Screw M3 X 12
4	1	3700-20-5844	Tool ID Window
5	1	3700-20-4820	Window, DJ Master, Annular Seal
6	1	4010-0000030-01	V-Ring Seal V-22A Nitrile
7	1	9005-20-1198	Master Cleat Sub-Assembly

NOTES: UNLESS OTHERWISE SPECIFIED.

DO NOT SCALE DRAWING. ALL DIMENSIONS ARE IN MILLIMETERS.



1031 Goodworth Drive, Apex, NC 27539, USA
 Tel: +1.919.772.0115 Email: info@ati-ia.com
 Fax: +1.919.772.8259 www.ati-ia.com
 ISO 9001 Registered Company

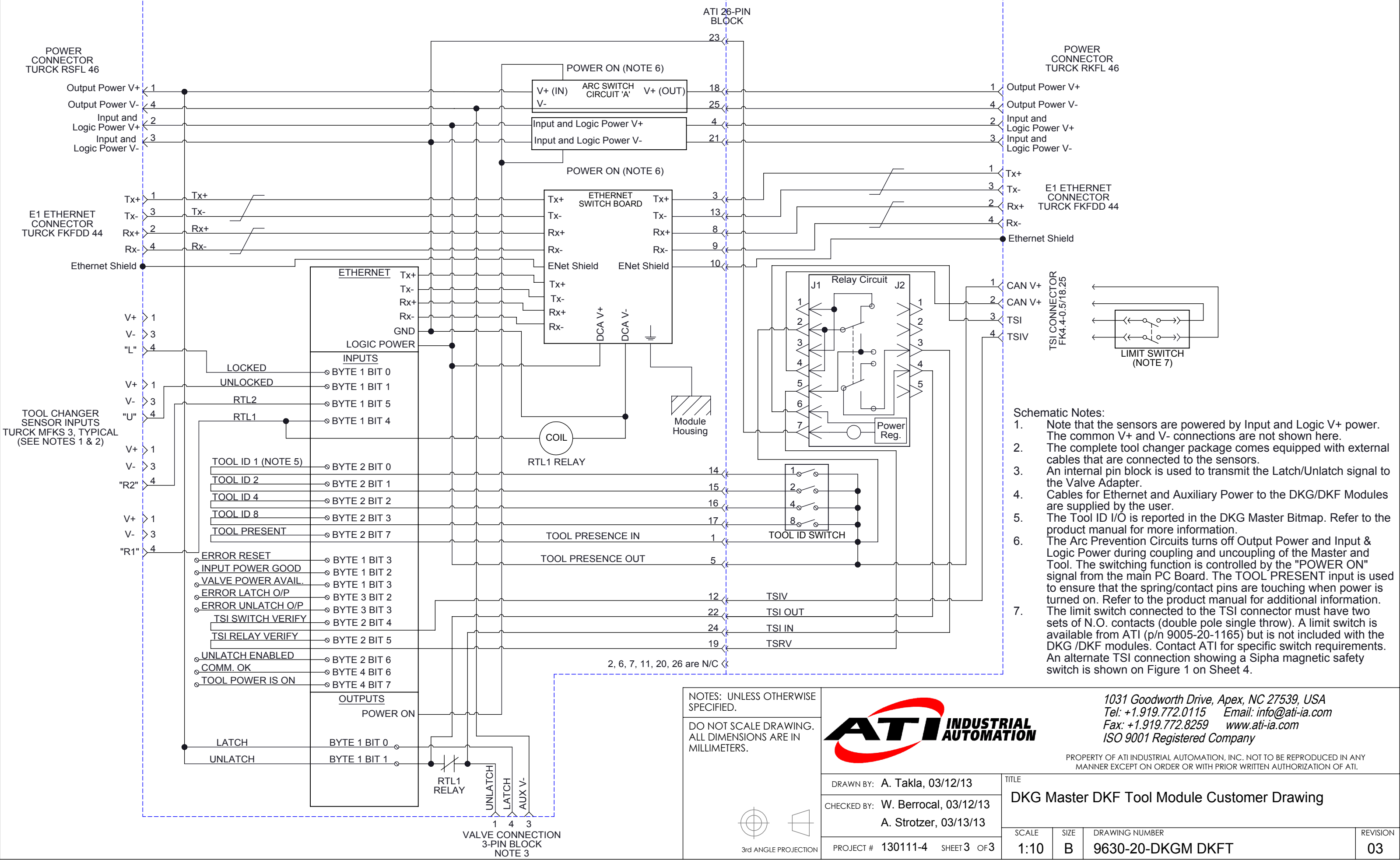
PROPERTY OF ATI INDUSTRIAL AUTOMATION, INC. NOT TO BE REPRODUCED IN ANY MANNER EXCEPT ON ORDER OR WITH PRIOR WRITTEN AUTHORIZATION OF ATI.

DRAWN BY: A. Takla, 03/12/13		TITLE	
CHECKED BY: W. Berrocal, 03/12/13 A. Strotzer, 03/13/13		DKG Master DKF Tool Module Customer Drawing	
PROJECT # 130111-4	SHEET 2 OF 3	SCALE 2:3	SIZE B
DRAWING NUMBER 9630-20-DKGM DKFT		REVISION 03	

Rev.	Description	Initiator	Date
-	See Sheet1	-	-

9121-DKG-M

9121-DKF-T



- Schematic Notes:**
- Note that the sensors are powered by Input and Logic V+ power. The common V+ and V- connections are not shown here.
 - The complete tool changer package comes equipped with external cables that are connected to the sensors.
 - An internal pin block is used to transmit the Latch/Unlatch signal to the Valve Adapter.
 - Cables for Ethernet and Auxiliary Power to the DKG/DFK Modules are supplied by the user.
 - The Tool ID I/O is reported in the DKG Master Bitmap. Refer to the product manual for more information.
 - The Arc Prevention Circuits turns off Output Power and Input & Logic Power during coupling and uncoupling of the Master and Tool. The switching function is controlled by the "POWER ON" signal from the main PC Board. The TOOL PRESENT input is used to ensure that the spring/contact pins are touching when power is turned on. Refer to the product manual for additional information.
 - The limit switch connected to the TSI connector must have two sets of N.O. contacts (double pole single throw). A limit switch is available from ATI (p/n 9005-20-1165) but is not included with the DKG /DKF modules. Contact ATI for specific switch requirements. An alternate TSI connection showing a Sipha magnetic safety switch is shown on Figure 1 on Sheet 4.

NOTES: UNLESS OTHERWISE SPECIFIED.

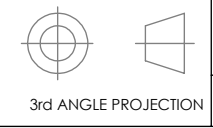
DO NOT SCALE DRAWING. ALL DIMENSIONS ARE IN MILLIMETERS.



1031 Goodworth Drive, Apex, NC 27539, USA
 Tel: +1.919.772.0115 Email: info@ati-ia.com
 Fax: +1.919.772.8259 www.ati-ia.com
 ISO 9001 Registered Company

PROPERTY OF ATI INDUSTRIAL AUTOMATION, INC. NOT TO BE REPRODUCED IN ANY MANNER EXCEPT ON ORDER OR WITH PRIOR WRITTEN AUTHORIZATION OF ATI.

DRAWN BY: A. Takla, 03/12/13		TITLE	
CHECKED BY: W. Berrocal, 03/12/13 A. Strotzer, 03/13/13		DKG Master DKG Tool Module Customer Drawing	
PROJECT # 130111-4	SHEET 3 OF 3	SCALE 1:10	SIZE B
DRAWING NUMBER 9630-20-DKGM DKFT		REVISION 03	



VALVE CONNECTION 3-PIN BLOCK NOTE 3

2, 6, 7, 11, 20, 26 are N/C