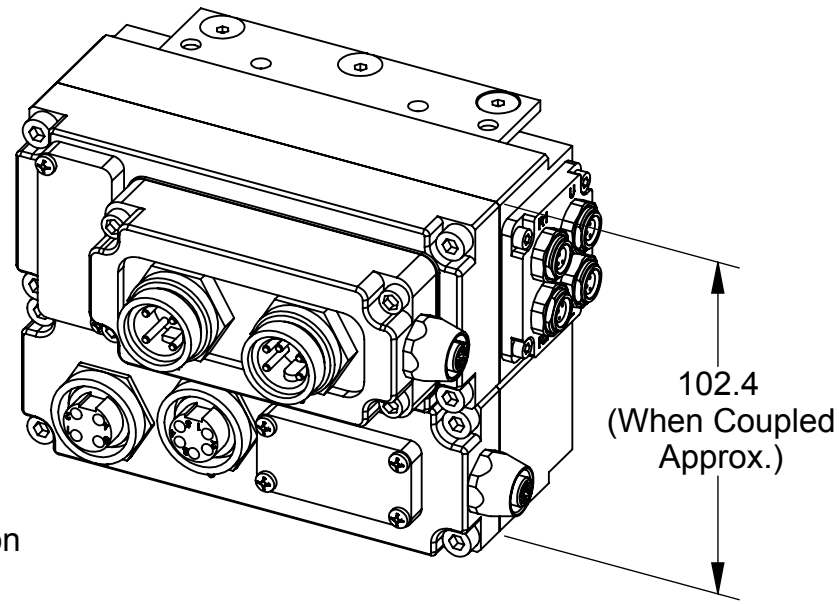
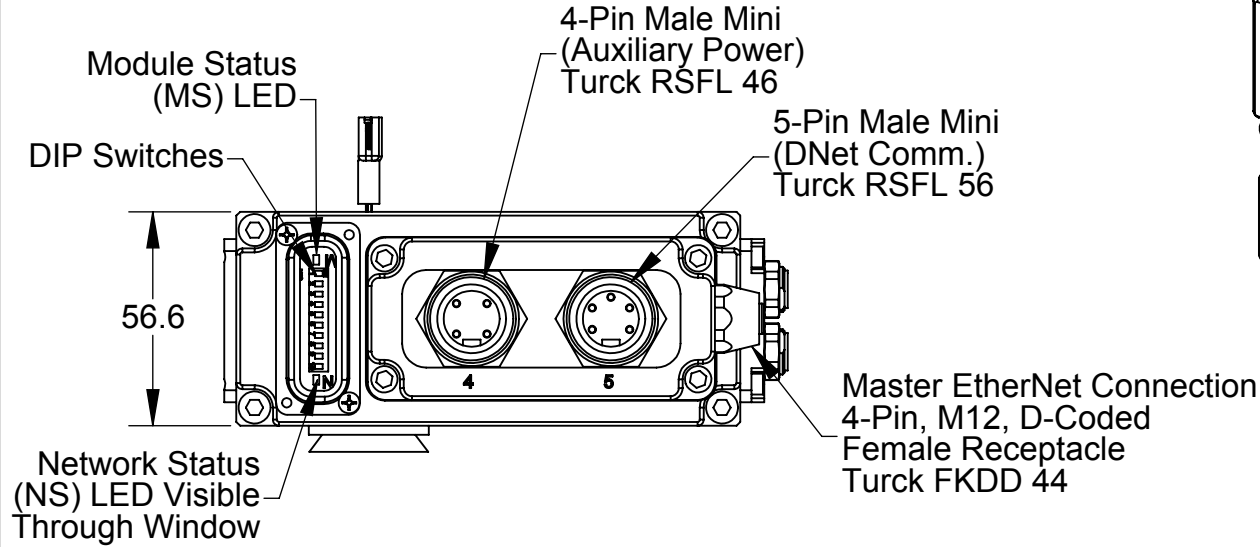
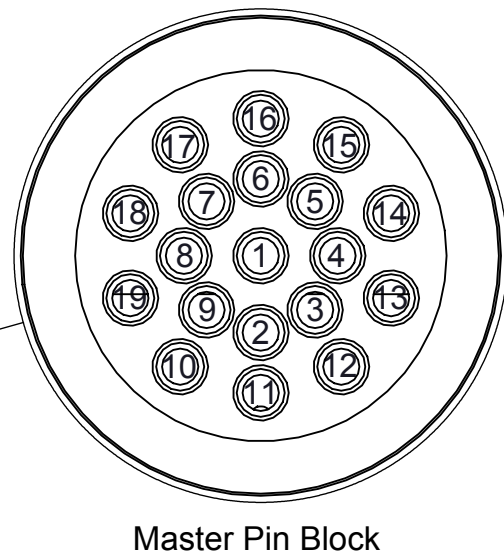
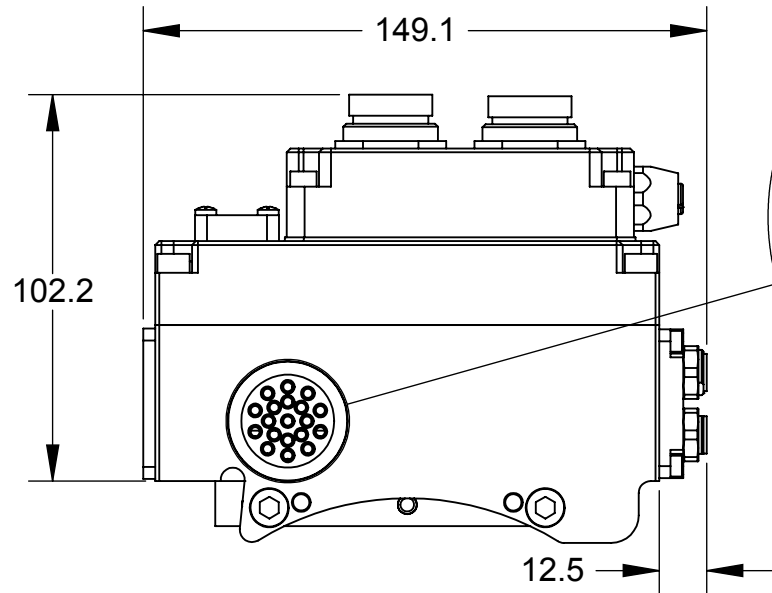
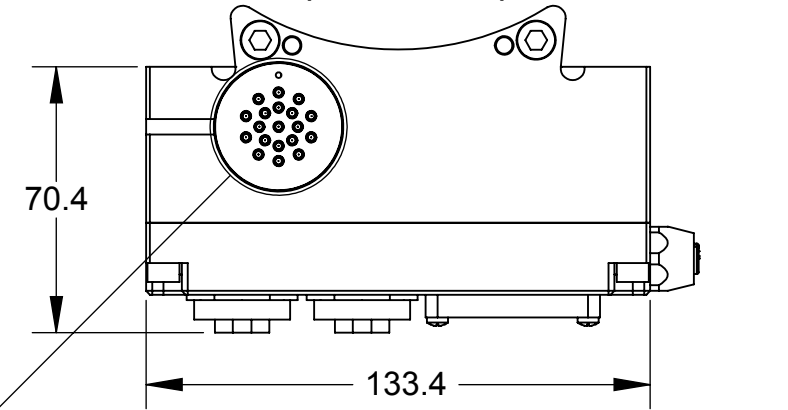


| Rev. | Description | Initiator | Date |
|------|--|-----------|----------|
| 07 | Eco 18737; Fixed dangling dimensions. Deleted explode lines and note callouts left from tool side clear removal. Updated titleblock. | MAL | 3/2/2020 |

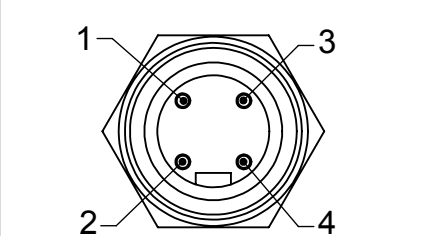
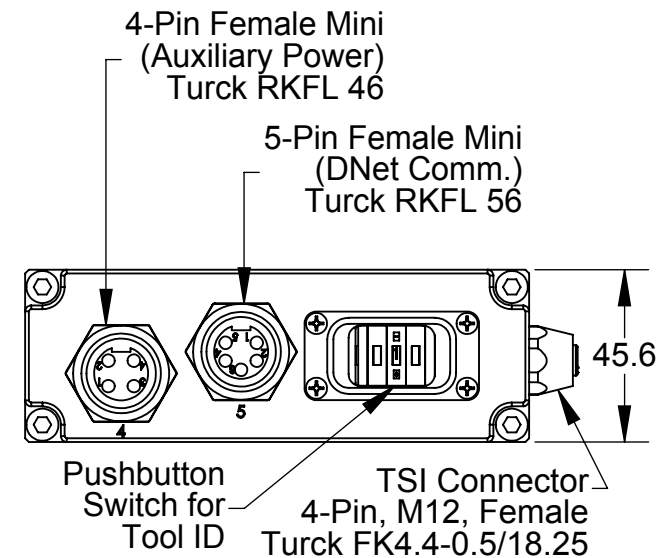
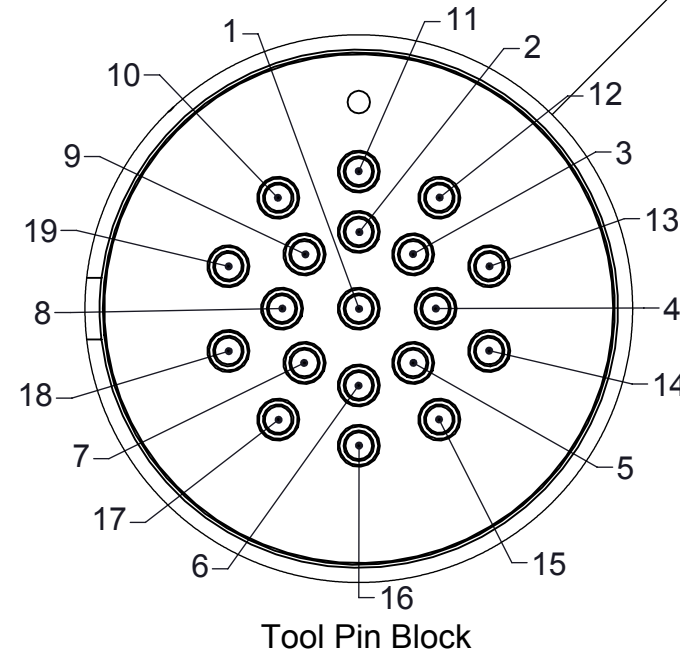
DKD Master Module (9121-DKD-M)



DKD Tool Module (9121-DKD-T)

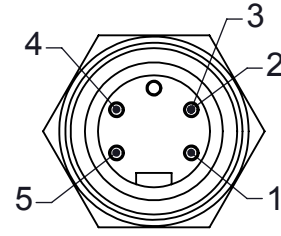


| Pin | Description |
|-----|---------------------|
| 1 | Tool Presence In |
| 2 | Tool ID 8 |
| 3 | Tool ID 2 |
| 4 | Drain |
| 5 | Aux V+ (Switched) |
| 6 | TSIV |
| 7 | CAN_L |
| 8 | Tool ID 4 |
| 9 | Tool ID 1 |
| 10 | Aux V+ (Unswitched) |
| 11 | Tool Presence Out |
| 12 | CAN V- |
| 13 | Aux V- (Unswitched) |
| 14 | TSI In |
| 15 | CAN_H |
| 16 | AUX V- (Switched) |
| 17 | TSI Out |
| 18 | TSRV |
| 19 | CAN V+ |



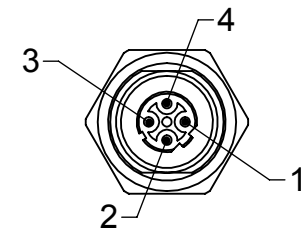
Auxiliary Power Mini
4-Pin Male, Turck RSFL 46

| Auxiliary Power Connector | |
|---------------------------|---------------------|
| 1 | Aux V+ (Switched) |
| 2 | Aux V+ (Unswitched) |
| 3 | Aux V- (Unswitched) |
| 4 | Aux V- (Switched) |



DeviceNet Mini
5-Pin Male, Turck RSFL 56

| DeviceNet Connector | |
|---------------------|--------|
| 1 | Drain |
| 2 | CAN V+ |
| 3 | CAN V- |
| 4 | CAN_H |
| 5 | CAN_L |



EtherNet Master
4-Pin, D-Coded Female
Turck FKDD 4412

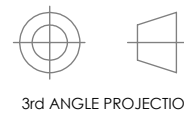
| EtherNet Connector | |
|--------------------|-----|
| 1 | Tx+ |
| 2 | Rx+ |
| 3 | Tx- |
| 4 | Rx- |

Notes:

1. Reference the manual for information related to DIP switch settings, LED behavior and general product operation.
2. Connectors are oriented as shown unless otherwise specified.
3. Unless otherwise noted, connectors at 1:1 scale, pin blocks at 2:1 scale.
4. Serviceable Parts are listed on Sheet 2. An electrical schematic is shown on Sheet 3.

NOTES: UNLESS OTHERWISE SPECIFIED.

DO NOT SCALE DRAWING. ALL DIMENSIONS ARE IN MILLIMETERS.



3rd ANGLE PROJECTION



1031 Goodworth Drive, Apex, NC 27539, USA
Tel: +1.919.772.0115 www.ati-ia.com
Fax: +1.919.772.8259 ISO 9001 Registered Company

PROPERTY OF ATI INDUSTRIAL AUTOMATION, INC. NOT TO BE REPRODUCED IN ANY MANNER EXCEPT ON ORDER OR WITH PRIOR WRITTEN AUTHORIZATION OF ATI.

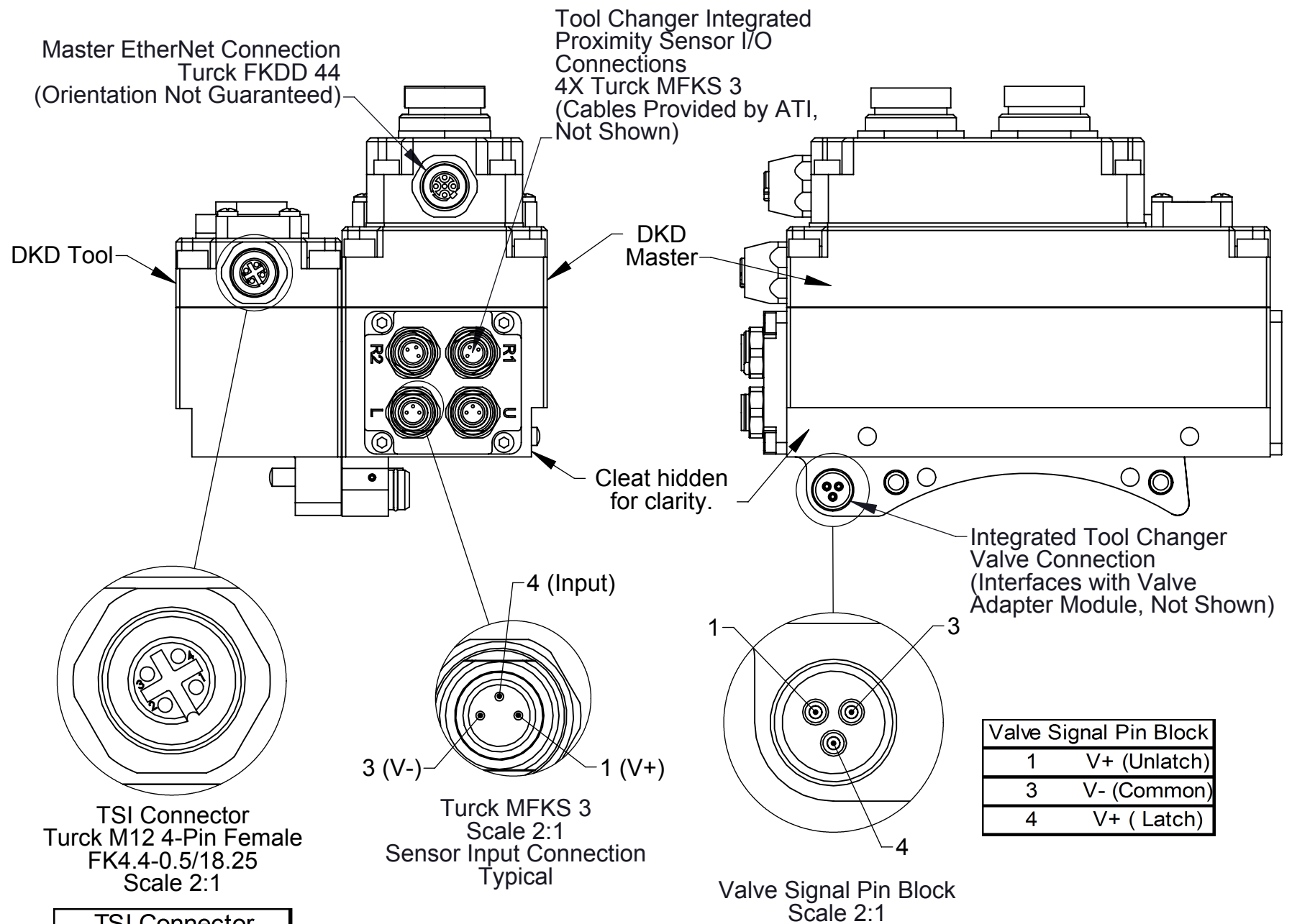
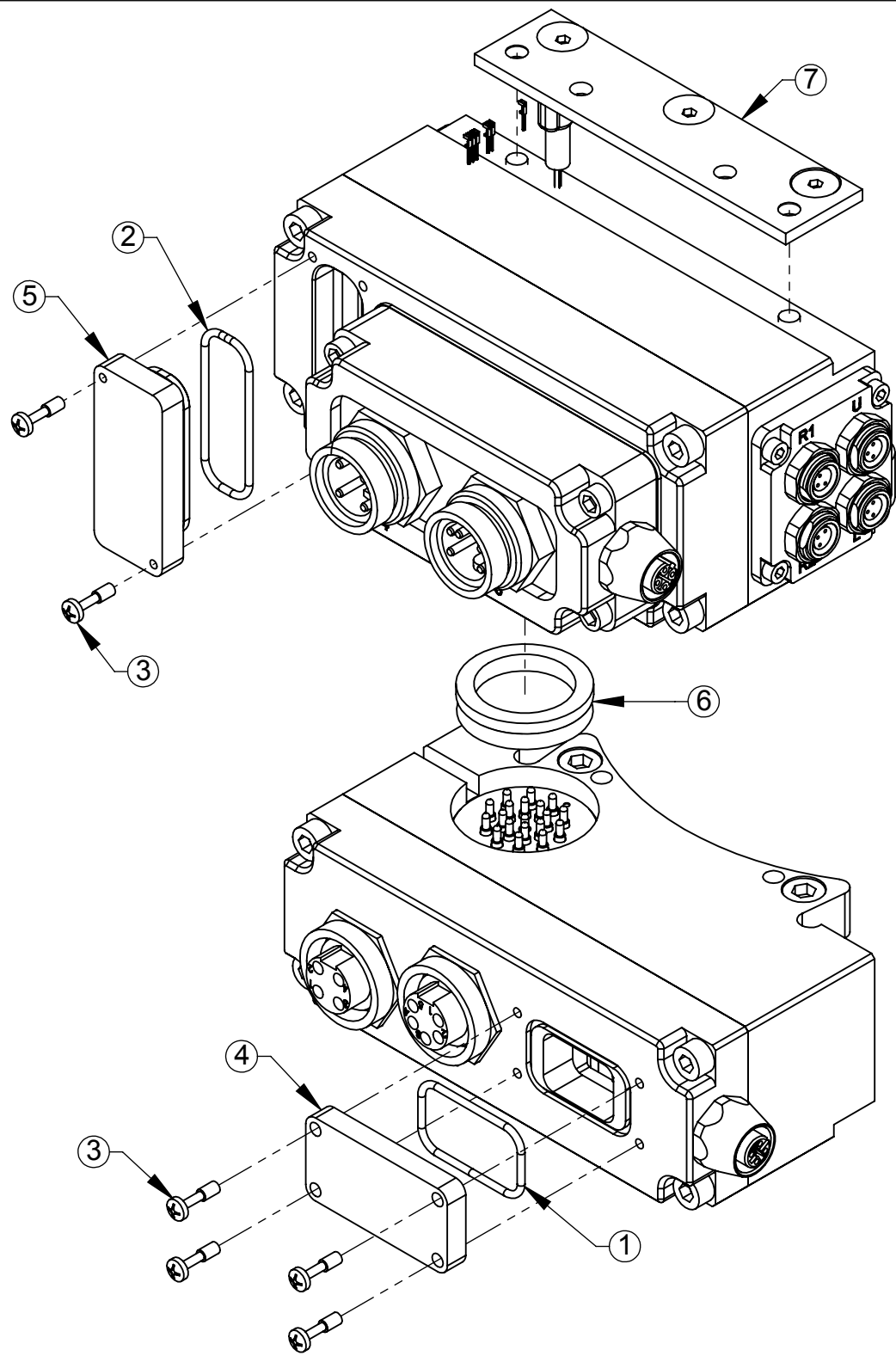
DRAWN BY: W. Berrocal, 7/27/09

CHECKED BY: D. Mushow, 7/28/09

PROJECT # 080715-1 SHEET 1 OF 3

TITLE
DKD Ethernet/Devicenet Module Customer Drawing

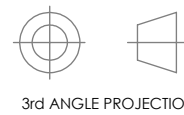
| SCALE | SIZE | DRAWING NUMBER | REVISION |
|-------|------|----------------|----------|
| 1:2 | B | 9630-20-DKD | 07 |



| 9121-DKD-M/T SERVICEABLE PARTS | | | |
|--------------------------------|-----|-----------------|-----------------------------------|
| ITEM | QTY | PART NUMBER | DESCRIPTION |
| 1 | 1 | 3410-0001092-01 | O-ring, Buna N 70D, AS568-023 |
| 2 | 1 | 3410-0001201-01 | O-Ring AS568-024 |
| 3 | 6 | 3500-9957012-21 | Pan Head M3 Captive Screw M3 X 12 |
| 4 | 1 | 3700-20-2696 | Device Net Master Window, Thick |
| 5 | 1 | 3700-20-4820 | Window, DJ Master, Annular Seal |
| 6 | 1 | 4010-0000030-01 | V-Ring Seal V-22A Nitrile |
| 7 | 1 | 9005-20-1198 | Master Cleat Sub-Assembly |

NOTES: UNLESS OTHERWISE SPECIFIED.

DO NOT SCALE DRAWING. ALL DIMENSIONS ARE IN MILLIMETERS.



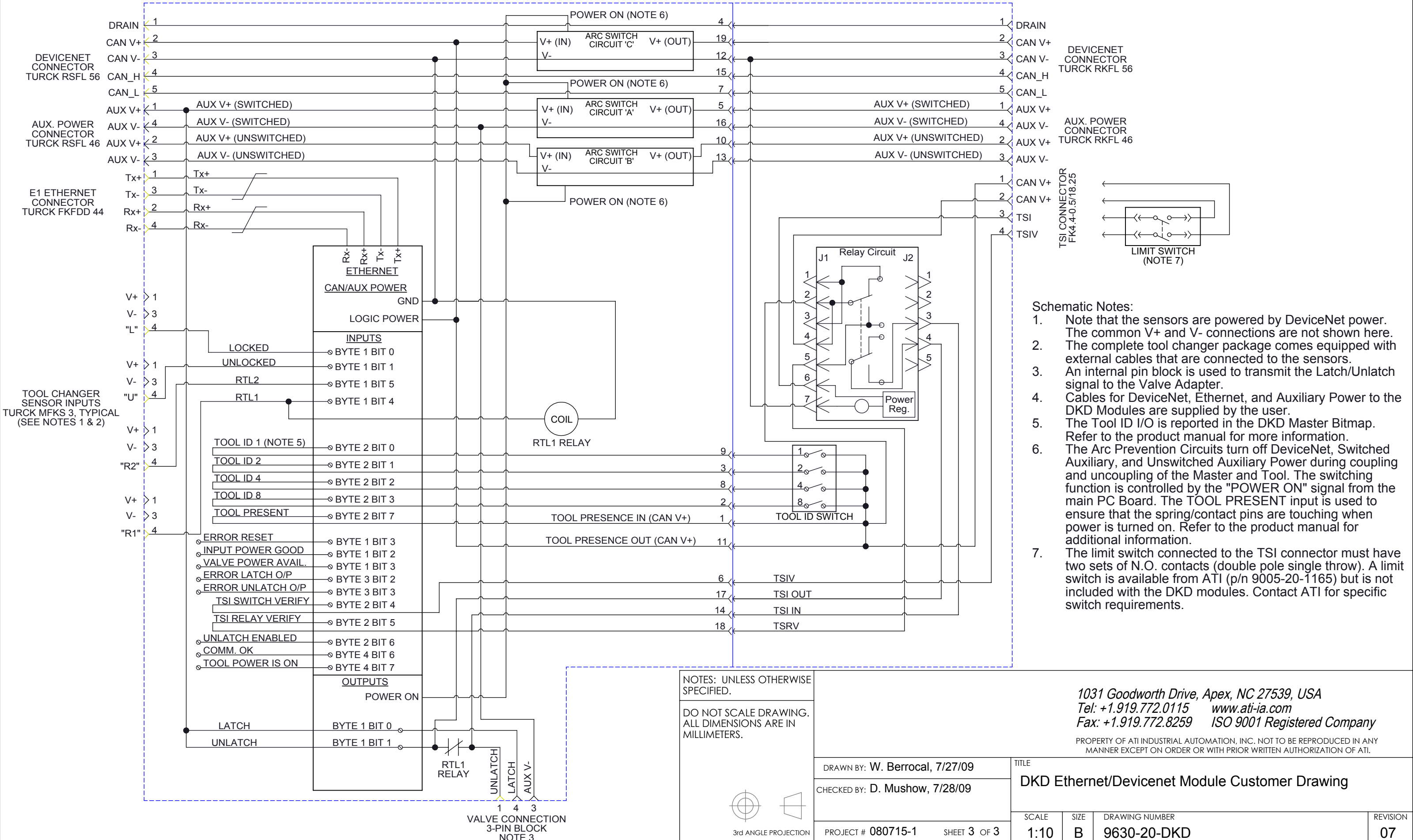
1031 Goodworth Drive, Apex, NC 27539, USA
Tel: +1.919.772.0115 www.ati-ia.com
Fax: +1.919.772.8259 ISO 9001 Registered Company

PROPERTY OF ATI INDUSTRIAL AUTOMATION, INC. NOT TO BE REPRODUCED IN ANY MANNER EXCEPT ON ORDER OR WITH PRIOR WRITTEN AUTHORIZATION OF ATI.

| | | | |
|--------------------------------|--------------|--|----------|
| DRAWN BY: W. Berrocal, 7/27/09 | | TITLE | |
| CHECKED BY: D. Mushow, 7/28/09 | | DKD Ethernet/Devicenet Module Customer Drawing | |
| PROJECT # 080715-1 | SHEET 2 OF 3 | SCALE | SIZE |
| | | 2:3 | B |
| | | DRAWING NUMBER | REVISION |
| | | 9630-20-DKD | 07 |

9121-DKD-M

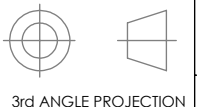
9121-DKD-T



- Schematic Notes:**
- Note that the sensors are powered by DeviceNet power. The common V+ and V- connections are not shown here.
 - The complete tool changer package comes equipped with external cables that are connected to the sensors.
 - An internal pin block is used to transmit the Latch/Unlatch signal to the Valve Adapter.
 - Cables for DeviceNet, Ethernet, and Auxiliary Power to the DKD Modules are supplied by the user.
 - The Tool ID I/O is reported in the DKD Master Bitmap. Refer to the product manual for more information.
 - The Arc Prevention Circuits turn off DeviceNet, Switched Auxiliary, and Unswitched Auxiliary Power during coupling and uncoupling of the Master and Tool. The switching function is controlled by the "POWER ON" signal from the main PC Board. The TOOL PRESENT input is used to ensure that the spring/contact pins are touching when power is turned on. Refer to the product manual for additional information.
 - The limit switch connected to the TSI connector must have two sets of N.O. contacts (double pole single throw). A limit switch is available from ATI (p/n 9005-20-1165) but is not included with the DKD modules. Contact ATI for specific switch requirements.

NOTES: UNLESS OTHERWISE SPECIFIED.

DO NOT SCALE DRAWING. ALL DIMENSIONS ARE IN MILLIMETERS.



1031 Goodworth Drive, Apex, NC 27539, USA
 Tel: +1.919.772.0115 www.ati-ia.com
 Fax: +1.919.772.8259 ISO 9001 Registered Company

PROPERTY OF ATI INDUSTRIAL AUTOMATION, INC. NOT TO BE REPRODUCED IN ANY MANNER EXCEPT ON ORDER OR WITH PRIOR WRITTEN AUTHORIZATION OF ATI.

| | | | |
|--------------------------------|--------------|--|-------------|
| DRAWN BY: W. Berrocal, 7/27/09 | | TITLE | |
| CHECKED BY: D. Mushow, 7/28/09 | | DKD Ethernet/Devicenet Module Customer Drawing | |
| PROJECT # 080715-1 | SHEET 3 OF 3 | SCALE 1:10 | SIZE B |
| | | DRAWING NUMBER 9630-20-DKD | REVISION 07 |