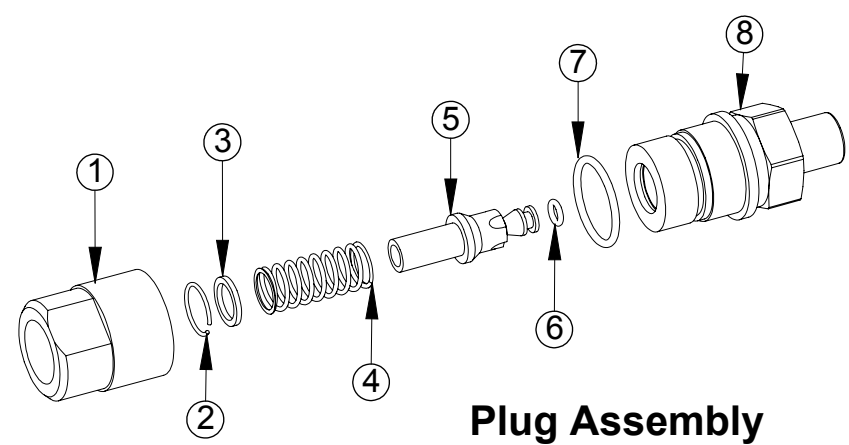


Hydraulic Coupler Maintenance

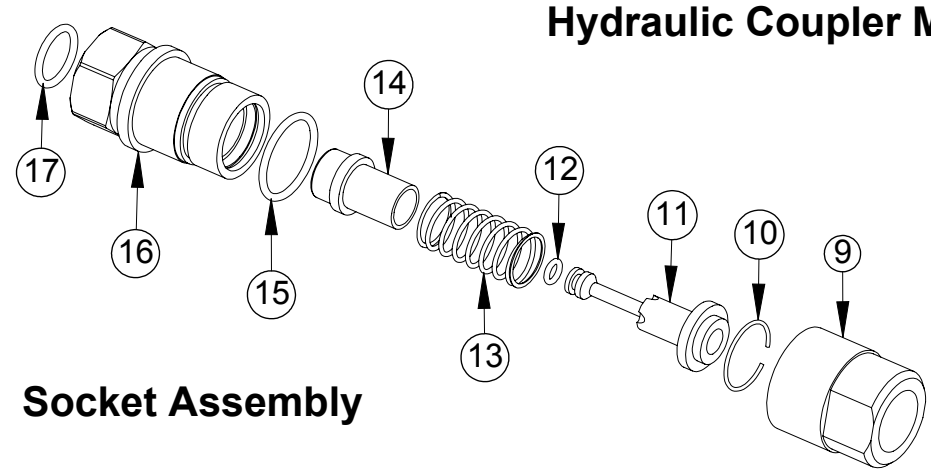


Plug Assembly

Plug Maintenance:

1. Separate the coupler halves by unscrewing the pipe thread adapter from the coupler front body.
 2. Secure the coupler front body in a soft-jaw vice.
 3. Use a sharp, hook-end pick to pry the spring circlip from the rear of the body.
 4. Withdraw the circlip, flat washer, spring, and valve body from the coupler.
 5. Remove the large o-ring from the rear of the coupler body.
 6. Remove the small o-ring from the valve body.
- Reassembly is the reversal of the above.
 - During reassembly use new seals when possible.
 - Lubricate the new seals and coupler bore with grease (NLGI-2)
 - When re-mounting the coupler, tighten the front and rear halves to the torque recommended on the particular module's 9630 drawing.

Item	Description
1	Pipe Thread Adapter, Plug
2	Spring Circlip, Plug
3	Flat Washer, Plug
4	Spring, Plug
5	Valve Body, Plug
6	Small O-Ring, Plug
7	Large O-Ring, Plug
8	Coupler Front Body, Plug

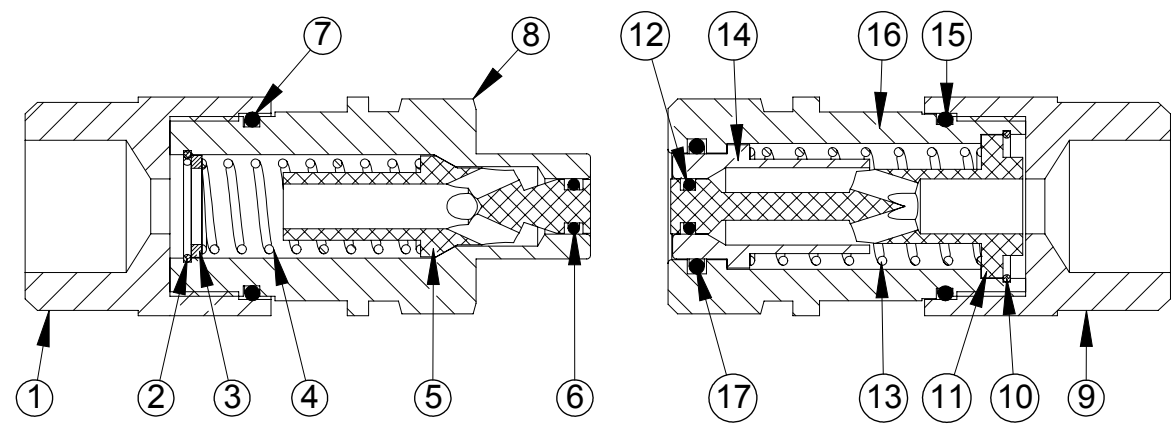
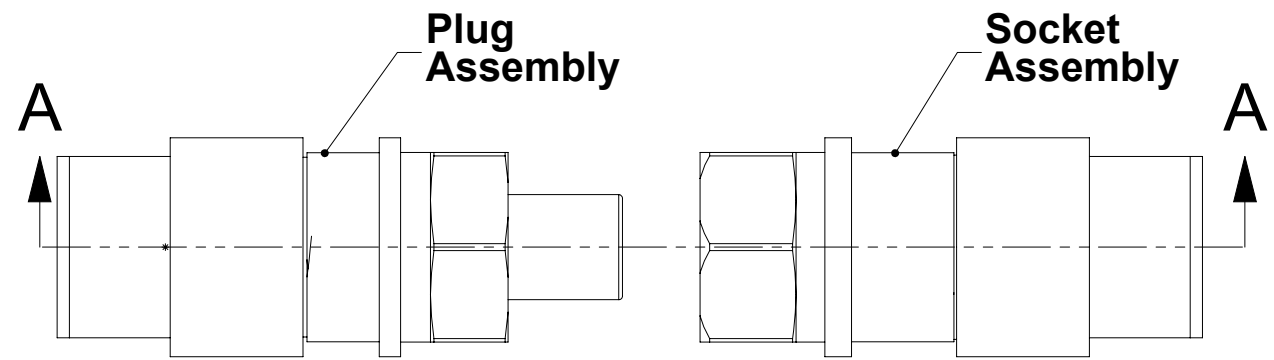


Socket Assembly

Socket Maintenance:

1. Separate the coupler halves by unscrewing the pipe thread adapter from the coupler front body.
 2. Secure the coupler front body in a soft-jaw vice.
 3. Use a sharp, hook-end pick to pry the spring circlip from the rear of the body.
 4. Withdraw the circlip, valve body, spring, and sleeve from the coupler.
 5. Remove the large o-ring from the rear of the coupler body.
 6. Remove the small o-ring from the valve body.
 7. Remove the medium o-ring from the bore of the coupler front body.
- Reassembly is the reversal of the above.
 - During reassembly use new seals when possible.
 - Lubricate the new seals and coupler bore with grease (NLGI-2)
 - When re-mounting the coupler, tighten the front and rear halves to the torque recommended on the particular module's 9630 drawing.

Item	Description
9	Pipe Thread Adapter, Socket
10	Spring Circlip, Socket
11	Valve Body, Socket
12	Small O-Ring, Socket
13	Spring, Socket
14	Sleeve, Socket
15	Large O-Ring, Socket
16	Coupler Front Body, Socket
17	Medium O-Ring, Socket



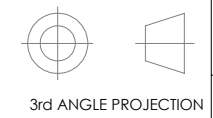
SECTION A-A

Notes:

- Seal kits are available as service parts. Contact ATI customer service for information.
- Internal springs are under pressure. **Wear eye protection during maintenance.**
- Circlip removal and installation will be easier with help from an assistant.

NOTES: UNLESS OTHERWISE SPECIFIED.

DO NOT SCALE DRAWING. ALL DIMENSIONS ARE IN MILLIMETERS.



1031 Goodworth Drive, Apex, NC 27539, USA
 Tel: +1.919.772.0115 Email: info@ati-ia.com
 Fax: +1.919.772.8259 www.ati-ia.com
 ISO 9001 Registered Company

PROPERTY OF ATI INDUSTRIAL AUTOMATION, INC. NOT TO BE REPRODUCED IN ANY MANNER EXCEPT ON ORDER OR WITH PRIOR WRITTEN AUTHORIZATION OF ATI.

DRAWN BY: D.Lawson-7/1/11		TITLE	
CHECKED BY: D.Swanson-7/1/11		Hydraulic Coupler Service Instructions	
PROJECT # 110630-2	SHEET 1 OF 1	SCALE 1:1	SIZE B
		DRAWING NUMBER	REVISION
		9630-20-COUPLER	01